



Economic Activity & Employment

This document is designed to look specifically at economic activity and employment data provided by the Office for National Statistics and is collated from the 2001 Census and 'The East of England Region in Figures.' It focuses on employment statistics for Colchester and covers topics such as;

- ⊙ Economic Activity
- ⊙ Economic Inactivity
- ⊙ Industry
- ⊙ Occupation
- ⊙ Unemployment
- ⊙ Gender and work

The data are presented in both tables and charts and these are complemented by basic written summaries. Where possible, comparisons with other areas and previous years have been included. Additionally, a glossary of definitions is provided at the end of the document.

For further information on this or any of our other documents please call Cathryn-Ann Cansdale on (01206) 282109 or email cathryn.cansdale@colchester.gov.uk.

Alternatively, you can log on to the Colchester Borough Council website and click on Research and Statistics to view the very latest information – www.colchester.gov.uk.

Source: National Statistics website: www.statistics.gov.uk

Crown copyright material is reproduced with the permission of the Controller HMSO.

Colchester Borough Council holds a Click-use license permitting reproduction (License Number: C02W0001762).

Economic Activity & Employment

Table of Contents

Economic Activity in Colchester	3
Fig 2.1. Economic activity of those aged 16-74 (table)	3
Fig 2.2. Economic activity in Colchester, 2001 (chart)	3
Industry in Colchester	4
Fig 2.3. Employment by industry (table)	4
Fig 2.4. Industry by gender in Colchester 2001 (chart)	5
Fig 2.5. Industry by age, 2001 (chart)	5
Occupation in Colchester	6
Fig 2.6. Occupation in Colchester, 2001 (table)	6
Fig 2.7. Occupations by gender in Colchester, 2001 (chart)	7
Fig 2.8. Occupation by age , Colchester 2001 (chart)	7
Unemployment in Colchester	8
Fig 2.9. Unemployment of those aged 16-74, 2001 (table)	8
Fig 2.10. Unemployment by age and gender, Colchester 2001 (table)	8
Fig 2.11. Percentage unemployed by age and gender, 2001 (chart)	9
Fig 2.12. Residents aged 16-19 not in education or work, 2001 (table)	9
Fig 2.13. Residents aged 16-19 not in education or work, 2001 (chart)	10
Fig 2.14. Dependent children living in households with no adult in work, 2001 (table)	10
Fig 2.15. Claimant count 2003 (table)	11
Fig 2.16. Claimant count rate by local area (chart)	11
Fig 2.17. Claimant count in Colchester 1994-2004 (chart)	12
Fig 2.18. Economic activity and employment – Gender Breakdown (table)	13
Fig 2.19. Economic activity for the wards (table)	14
Glossary	16

Economic Activity & Employment

Economic Activity in Colchester

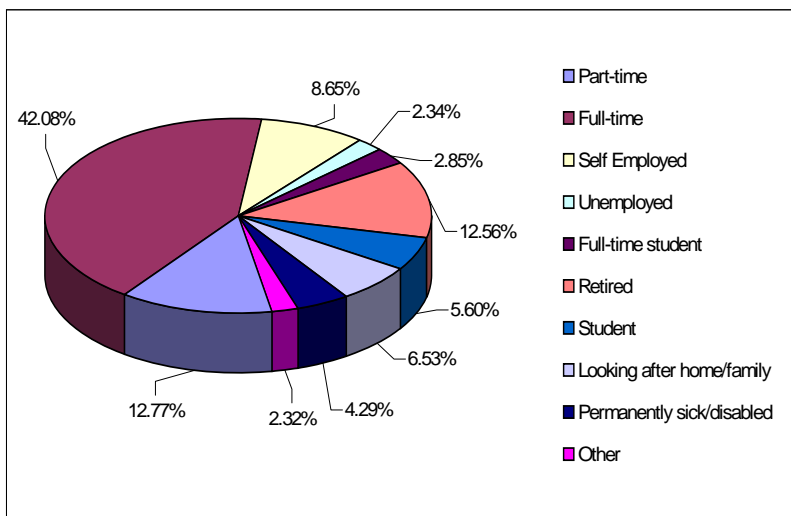
Fig 2.1. Economic Activity of those aged 16-74

Area	All people aged 16-74	Economically active					Economically inactive				
		Employees #		Self Employed	Unemployed	Full-time student	Retired	Student	Looking after home/family	Permanently sick/disabled	Other
		Part-time	Full-time								
ENGLAND	35,532,091	4,196,041	14,499,241	2,954,988	1,188,855	917,582	4,811,595	1,660,564	2,316,229	1,884,901	1,102,095
EAST	3,884,104	484,740	1,654,889	359,109	101,023	89,995	543,197	140,348	261,876	151,711	97,216
Basildon	119,516	14,344	51,597	9,816	3,702	2,236	16,390	2,757	9,859	5,616	3,199
Braintree	94,826	12,045	42,276	9,997	2,187	1,920	11,948	2,071	6,841	3,551	1,990
Brentwood	49,514	5,905	20,991	4,988	922	995	7,916	1,487	3,685	1,603	1,022
Castle Point	63,207	8,107	25,521	6,275	1,541	1,269	10,085	1,454	4,861	2,650	1,444
Chelmsford	115,131	14,624	52,323	10,357	2,372	3,253	15,357	3,826	7,606	3,024	2,389
Colchester	113,771	14,527	47,879	9,844	2,662	3,248	14,292	6,372	7,432	4,877	2,638
Epping Forest	87,252	9,935	35,702	10,896	2,269	1,471	12,246	2,748	6,724	2,981	2,280
Harlow	57,018	7,133	26,845	3,682	1,917	1,296	7,385	1,260	3,697	2,393	1,410
Maldon	43,056	5,535	17,352	5,365	938	772	6,116	1,123	3,396	1,523	936
Rochford	56,720	7,564	23,505	5,603	1,180	1,217	9,276	1,377	4,090	1,767	1,141
Tendring	95,684	11,837	31,454	8,895	2,834	1,619	20,502	2,427	6,629	6,604	2,883
Uttlesford	49,862	6,337	21,257	6,487	862	1,050	6,418	1,645	3,656	1,171	979
Essex	945,557	117,893	396,702	92,205	23,386	20,346	137,931	28,547	68,476	37,760	22,311
Southend-on-Sea	111,789	13,462	44,761	9,956	4,085	2,287	16,501	3,331	8,588	5,513	3,305
Thurrock	102,996	12,927	47,365	7,337	3,514	2,142	12,108	2,269	7,811	4,681	2,842

Notes:

- a) Source: Table KS09a, 2001 Census, ONS. © Crown Copyright, 2004.
- b) # For the Census, part-time is defined as working 30 hours or less a week. Full-time is defined as working 31 or more hours a week.
- c) See Glossary for all definitions.

Fig 2.2. Economic Activity in Colchester, 2001
(Percentage of 16-74 year olds)



Source: Table KS09a, 2001 Census, ONS. © Crown Copyright, 2004.

- Data from the Census indicated an economically active population of 78,160 people in Colchester, 68.70% of the population aged 16 to 74 years in 2001.
- Of those who were aged 16 to 74 years, just under half (42.08%, 47,879 people) were employed on a full-time basis, meaning that they work 31 hours or more a week.
- This was in line with the Essex (41.95%), Eastern (42.61%) and national (40.81%) averages.
- In comparison, 12.77% (14,527 people) of 16 to 74 year olds were employed on a part-time basis in 2001, working 30 hours or less in one week.

- Data also indicated that 9,844 people in Colchester were self-employed. This accounted for 8.65% of the borough's 16 to 74 year olds in 2001. This was below both the Essex (9.75%) and Eastern (9.25%) averages but slightly higher than the national average (8.32%) for 2001.
- Unemployment in Colchester among those who are economically active stood at 2,662 people in 2001, making up 2.34% of those aged 16 to 74. This was below both the Essex (2.47%) and national (3.35%) percentages.
- In comparison, 31.30% (35,611 people) were economically inactive in Colchester borough in 2001.
- Data indicates that there were 14,292 retired people in Colchester, making up 12.56% of all those 16 to 74 years and 40.13% of those who were economically inactive (and aged 16-74 years).
- There were 6,372 economically inactive students in the Colchester area and they comprised 5.60% of the working age population.
- A further 7,432, 6.53% of the total working age population were classified as economically inactive as they look after the home/family.
- Additionally, 4,877, 4.29% people in the borough were economically inactive as they were classified as permanently sick or disabled.

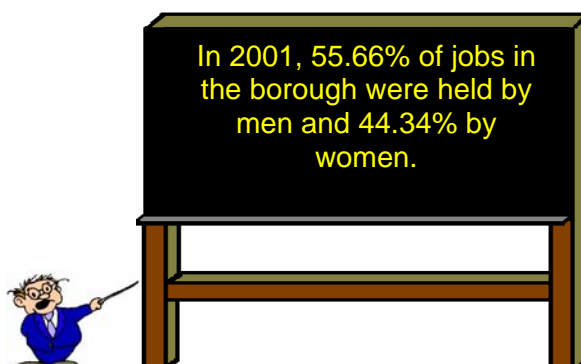
Industry in Colchester

Fig 2.3. Employment by Industry, 2001 (Percentage)

	All people aged 16 - 74 in employment	Agriculture; hunting and forestry	Fishing	Mining and quarrying	Manufacturing	Electricity; gas and water supply	Construction	Wholesale & retail trade; repair of motor vehicles	Hotels and catering	Transport; storage & communication	Financial Intermediation	Real estate; renting and business activities	Public administration and defence	Education	Health and social work	Other *
England	22,441,498	1.45	0.02	0.25	14.83	0.71	6.76	16.85	4.73	7.09	4.80	13.21	5.66	7.74	10.70	5.20
East of England	2,579,378	1.90	0.02	0.21	14.47	0.63	7.62	17.29	4.16	7.41	5.81	13.31	5.16	7.34	9.68	4.99
Basildon	77,773	0.62	0.01	0.08	13.85	0.56	9.68	17.88	3.52	8.30	11.31	12.64	3.76	5.61	8.05	4.12
Braintree	66,092	2.05	0.01	0.10	16.99	0.39	9.61	17.11	3.52	7.22	6.66	12.08	4.41	6.40	9.31	4.15
Brentwood	32,805	1.09	0.00	0.07	10.04	0.37	7.14	13.26	3.29	6.17	14.52	16.14	4.64	8.64	10.03	4.60
Castle Point	41,035	0.58	0.02	0.10	14.83	0.92	10.87	17.36	2.89	7.41	11.70	11.21	4.53	5.55	7.67	4.36
Chelmsford	80,257	1.40	0.01	0.17	11.35	0.62	7.55	16.40	3.66	6.70	11.10	14.06	5.30	7.83	9.20	4.64
Colchester	75,126	1.36	0.04	0.13	11.25	0.52	7.78	17.32	4.21	6.67	6.87	11.75	7.65	8.39	11.71	4.36
Epping Forest	57,853	1.53	0.02	0.11	10.71	0.41	8.92	16.46	3.52	7.46	8.92	15.49	4.67	7.25	8.76	5.77
Harlow	38,824	0.57	0.01	0.07	18.48	0.49	7.84	20.31	4.08	8.34	4.32	12.07	4.19	5.38	9.53	4.33
Maldon	28,943	2.39	0.07	0.23	16.24	1.54	10.18	16.05	3.82	5.86	6.91	13.11	3.85	6.67	8.41	4.69
Rochford	37,792	1.58	0.02	0.07	13.22	1.12	8.83	15.29	2.84	6.62	13.72	12.38	5.37	6.31	8.50	4.13
Tendring	53,642	2.40	0.05	0.18	12.32	0.56	8.82	18.11	4.96	9.04	4.63	9.11	4.54	7.03	13.16	5.09
Uttlesford	35,043	2.86	0.00	0.17	14.76	0.24	7.35	16.39	3.93	8.02	5.54	16.13	4.70	7.66	7.78	4.49
Essex	625,189	1.48	0.02	0.12	13.40	0.60	8.70	16.98	3.72	7.37	8.84	12.87	4.92	6.93	9.48	4.55
Southend-on-Sea	70177	0.58	0.03	0.06	10.96	0.61	7.45	15.3	3.88	6.89	12.3	12.36	5.95	7.27	10.78	5.59
Thurrock	69534	0.63	0.01	0.24	14.04	0.7	8.66	21.64	4.23	10.56	7.78	10.5	3.98	5.66	7.36	3.99

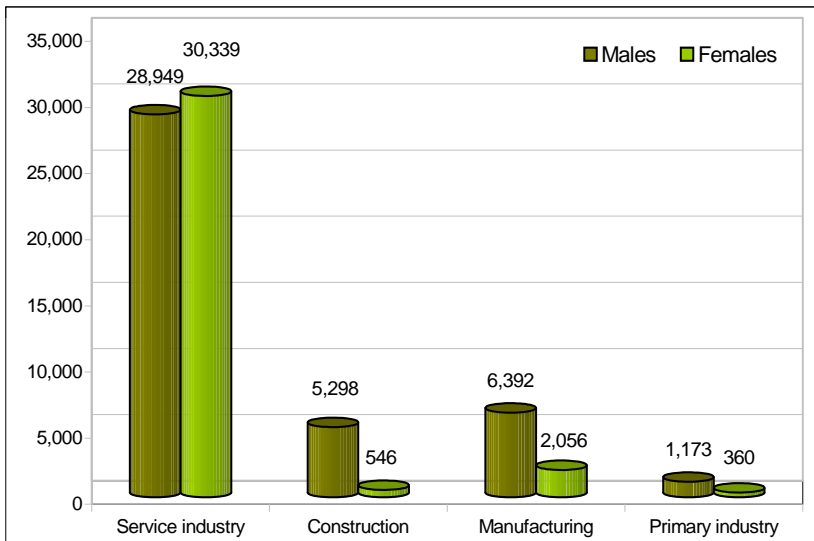
Notes:

- Source: Table KS11a, b, c, 2001 Census, ONS. © Crown Copyright 2004.
- * 'Other' includes other community, social and personal service activities, and private households with employed persons, extra territorial organisations and bodies.
- Cells in this table have been randomly adjusted to avoid the release of confidential data.



- On Census Day (29th April 2001), Colchester's economy was dominated largely by the service industry sector. (Those highlighted in Fig 2.3.)
- At this time, 17.32% of Colchester's population (13,013 people aged 16-74 years) were employed in 'Wholesale and retail trade, repair of motor vehicles.'
- Over three quarters (78.93%, 59,288 people) of jobs in the Borough were in the service sector with a further 11.25% (8,448 people) in manufacturing, 7.78% (5,844 people) in construction and the remainder in primary industries (2.04%, 1,533 people).

Fig 2.4. Industry by Gender in Colchester, 2001 (Totals)

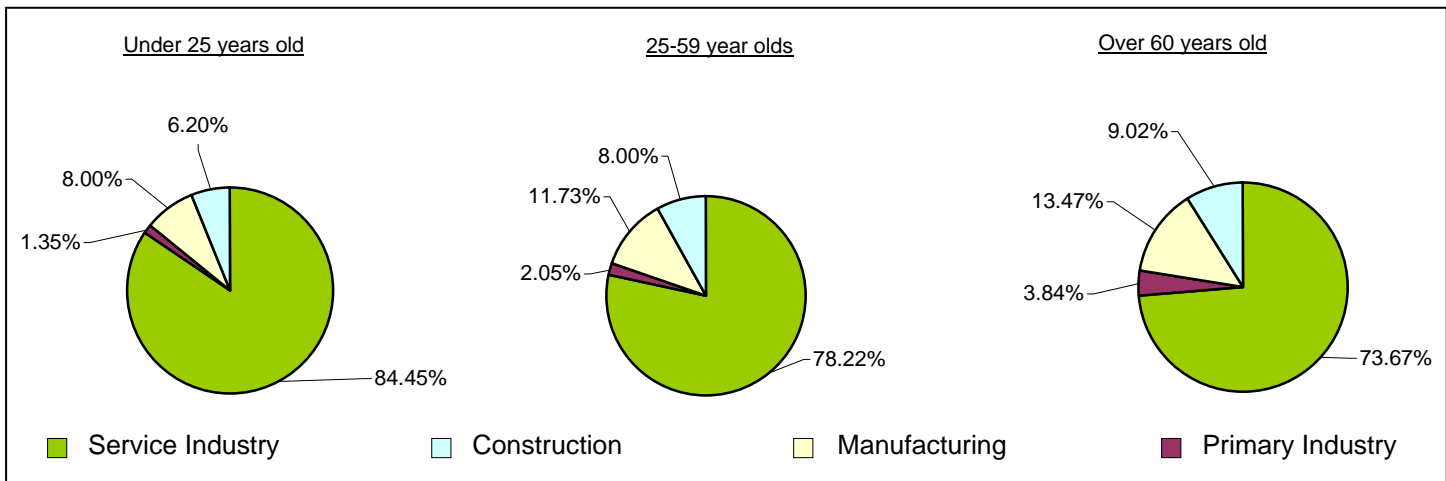


Source: Table ST036, 2001 Census, ONS. © Crown Copyright 2004

- Fig 2.4 charts the total numbers of males and females working within each type of industry in 2001.
- Statistics indicate that females dominated 51.17% (30,339 females) of the service sector while 48.83% was male (28,949 males).
- Looking within the gender groups we can see that an overwhelming majority of females in Colchester were employed within the service industry (91.11%, 30,339 people).
- In comparison, over two thirds (69.22%, 28,949 people) of the male population in Colchester also worked within the service industry.

- Additionally, it shows that men dominated all the remaining industries, the biggest difference being within the construction industry with 5,298 men and just 546 women.

Fig 2.5. Industry by age, 2001



Source: Table ST036, 2001 Census, ONS. © Crown Copyright 2004

- Fig 2.5 illustrates the distribution of Colchester's population in employment (aged 16-74) according to their age and the industry they work in.
- As mentioned before, the service industry dominated much of Colchester's workforce but was particularly pronounced in the under 25's age group (84.45%, 9,729 people).
- We can also see that although the majority of those aged over 60 worked within the service industry, as with the other age groups, there was a higher proportion working in the remaining industries such as 'manufacturing' and 'construction.'

Occupation in Colchester

Fig 2.6. Occupations in Colchester, 2001

Occupation	All people aged 16-74 in employment	Males aged 16-74 in employment		Females aged 16-74 in employment	
		Total	%	Total	%
Managers and Senior Officials	11,880	8,279	69.69	3,601	30.31
Professional Occupations	8,066	4,773	59.17	3,293	40.83
Associate Professional and Technical Occupations	11,893	7,259	61.04	4,634	38.96
Administrative and Secretarial Occupations	9,753	2,225	22.81	7,528	77.19
Skilled Trades Occupations	8,621	7,906	91.71	715	8.29
Personal Service Occupations	5,689	893	15.70	4,796	84.30
Sales and Customer Service Occupations	5,992	1,735	28.96	4,257	71.04
Process; Plant and Machine Operatives	5,042	4,318	85.64	724	14.36
Elementary Occupations	8,190	4,430	54.09	3,760	45.91
Total number in employment	75,126	41,818		33,308	

Notes:

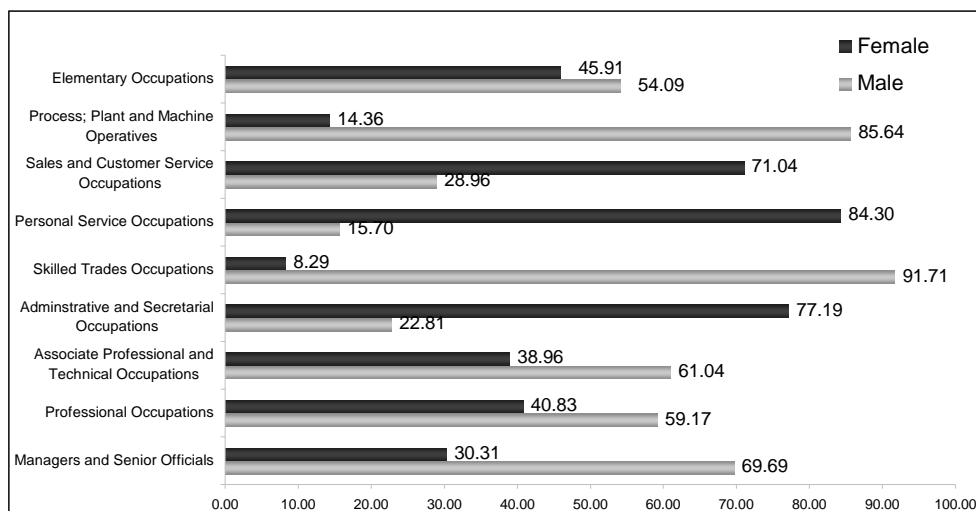
a) Theme Table T07, 2001 Census, ONS. © Crown Copyright 2004

- In 2001, the majority of 16 to 74 year olds currently working in Colchester were engaged in 'associate professional and technical occupations' (11,893 people, 15.83%).
- This was closely followed by those employed as 'managers and senior officials' (11,880 people, 15.81%).
- However, the smallest occupational group in Colchester was those engaged as 'process; plant and machine operatives' (5,042 people, 6.71%).



- Fig. 2.7 charts the gender differences within each occupation grouping.
- It shows that in 2001, over two thirds of those working as 'managers or senior officials' were male (8,279 people, 69.69%).
- Additionally, it is also interesting to note that there were far more women working in 'administrative and secretarial occupations' than men. Well over three quarters in this category were female (7,528 people, 77.19%).

Fig 2.7. Occupations by Gender in Colchester, 2001 (percentage)

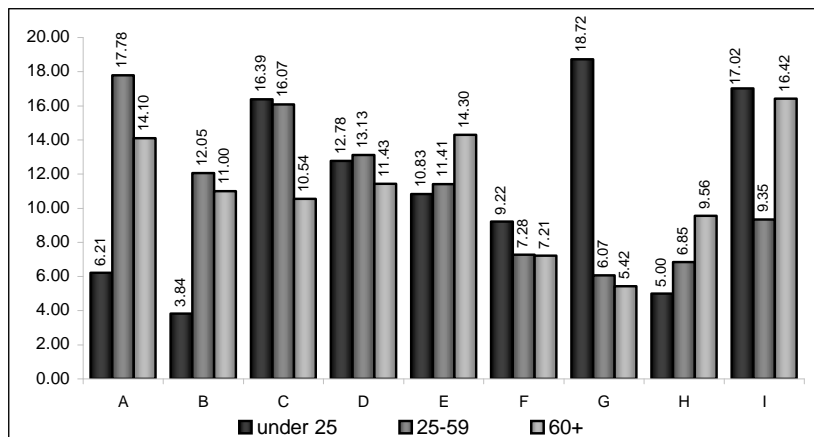


Source: Theme Table T07, 2001 Census, ONS. © Crown Copyright 2004

- As may be expected due to the level of manual work involved, it was found that males dominated both the 'plant and machine operatives' and 'skilled trades occupations.'
- Alternatively, female employees were far more prominent in the 'personal service occupations' (4,796 females, 84.30%), 'sales and customer service occupations' (4,257 females, 71.04%) and 'administrative and secretarial occupations' (7,528 females, 77.19%).

Fig 2.8. Occupation by age, Colchester 2001 (percentage)

A	Managers and Senior Officials
B	Professional Occupations
C	Associate Professional and Technical Occupations
D	Administrative and Secretarial Occupations
E	Skilled Trades Occupations
F	Personal Service Occupations
G	Sales and Customer Service Occupations
H	Process; Plant and Machine Operatives
I	Elementary Occupations



Source: Theme Table T07, 2001 Census, ONS. © Crown Copyright 2004

- Fig 2.8 looks at the distribution of Colchester's population (aged 16-74) according to their age and occupation.
- As we can see, in 2001 there was a much smaller proportion of under 25 year olds in the more higher paid occupations such as 'managers and senior officials' (6.21%, 716 people) and 'professional occupations' (3.84%, 442 people).
- However, as we move down the scale to the more unskilled, lower paid jobs we find that there was a high proportion of under 25 year olds in occupations such as 'sales and customer services' (18.72%, 2,157 people) and 'elementary occupations' (17.02%, 1,961), such as those which require few qualifications and a degree of manual work.
- Conversely, the majority of those aged between 25 and 59 could be found in more managerial (17.78%, 10,605 people) and professional occupations (12.05%, 7,188 people), whilst there was a small proportion in occupations such as 'sales and customer services' (6.07%, 3,620 people) and 'plant and machine operatives' (6.85%, 4,087 people).
- It is also interesting to note that there was a high proportion of people aged over 60 in 'elementary occupations' (16.42%, 651 people) and 'skilled trade occupations' (14.30%, 567 people).

Unemployment in Colchester

Fig 2.9. Unemployment of those aged 16-74, 2001

Area	Aged 16 - 24	Aged 50 and over	Who have never worked	Who are long-term Un-employed#
ENGLAND	305,452	221,511	110,261	359,728
EAST	26,219	21,051	6,108	27,405
Basildon	1,083	698	218	1,035
Braintree	573	428	101	504
Brentwood	217	227	44	226
Castle Point	437	367	88	430
Chelmsford	574	512	124	577
Colchester	716	473	140	667
Epping Forest	585	526	150	645
Harlow	492	302	131	488
Maldon	221	256	54	273
Rochford	307	279	69	318
Tendring	731	703	172	837
Uttlesford	220	219	30	202
Essex	6,156	4,990	1,321	6,202
Southend-on-Sea	959	818	317	1,349
Thurrock	1,053	569	308	924

Notes:

a) Source: Table KS09a, 2001 Census, ONS. © Crown Copyright, 2004.

b) # 'Long-term unemployed' are those who stated that they have not worked since 1999 or earlier.

- Unemployment in Colchester among those who are economically active stood at 2,662 people in 2001, making up 3.41% of those aged 16-74 and economically active. This was below both the Essex (3.59%) and national (5.00%) percentages.
- Of those who were classified as unemployed in Colchester, (2,662 people), 25.06% were classed as 'long-term unemployed' in 2001. This means that over a quarter had not worked since 1999 or earlier.
- This also means that Colchester had the 3rd highest number of long-term unemployed people in Essex (10.75%).
- Additionally, there were 140 people (5.26%) in Colchester aged 16-74 who had never worked at all. This was in line with the Essex average of 5.65% (1,321 people).

Fig 2.10. Unemployment by age and gender, Colchester, 2001

	All people aged 16-74			Unemployed		
	Total	Males	Females	Total	Males	Females
All People	113,767	57,216	56,551	2,661	1,512	1,149
16	1,870	965	905	41	22	19
17	1,888	994	894	95	60	35
18	1,913	997	916	101	55	46
19	2,292	1,256	1,036	89	53	36
20-24	11,049	5,838	5,211	390	228	162
25-29	11,021	5,783	5,238	358	213	145
30-34	12,300	6,318	5,982	354	168	186
35-39	11,843	5,968	5,875	332	162	170
40-44	10,438	5,183	5,255	221	125	96
45-49	9,741	4,818	4,923	208	122	86
50-54	11,477	5,514	5,963	196	120	76
55-59	8,943	4,440	4,503	163	92	71
60-64	7,141	3,492	3,649	89	74	15
65-69	6,175	3,019	3,156	20	14	6
70-74	5,676	2,631	3,045	4	4	0

Notes:

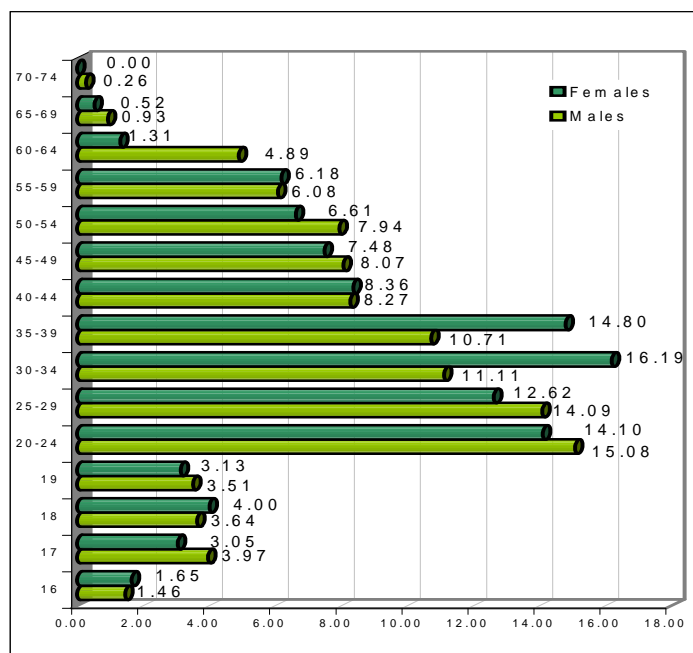
a) Source: Table ST028, 2001 Census, ONS. © Crown Copyright, 2004.

b) See glossary for definitions.

In 2001, there were more unemployed males in Colchester than females, the biggest difference being between the age of 25-29 years.



Fig 2.11. Percentage unemployed by age and gender, 2001



- Fig 2.11 charts the distribution of Colchester's unemployed population in 2001, according to their age and gender.
- It shows that male unemployment dominates almost two thirds of the age groups.
- We can also see that, although comparatively lower, there was a significant proportion of young people who were unemployed at this time.
- For example, 4.00% (46 people) of Colchester's unemployed females were aged 18 in 2001, whilst 3.97% (60 people) of unemployed males were aged 17.

Source: Table ST028, 2001 Census, ONS. © Crown Copyright, 2004.

Fig 2.12. Residents aged 16-19 not in education or work, 2001

	People aged 16			People aged 17			People aged 18			People aged 19		
	Total education aged 16	Not in education or work as % population aged 16	Not in education or work as % population aged 16	Total education aged 17	Not in education or work as % population aged 17	Not in education or work as % population aged 17	Total education aged 18	Not in education or work as % population aged 18	Not in education or work as % population aged 18	Total education aged 19	Not in education or work as % population aged 19	Not in education or work as % population aged 19
ENGLAND	629,445	26,887	4.27	601,821	59,425	9.87	590,850	74,775	12.66	586,721	88,442	15.07
EAST	67,398	2,336	3.47	64,329	5,244	8.15	61,437	6,454	10.51	58,165	7,681	13.21
Basildon	2,078	98	4.72	2,042	256	12.54	1,905	274	14.38	1,668	315	18.88
Braintree	1,639	77	4.70	1,485	107	7.21	1,358	126	9.28	1,290	143	11.09
Brentwood	811	19	2.34	874	51	5.84	713	41	5.75	554	46	8.30
Castle Point	1,122	40	3.57	1,119	96	8.58	954	96	10.06	872	103	11.81
Chelmsford	2,038	40	1.96	2,014	110	5.46	1,874	169	9.02	1,744	186	10.67
Colchester	1,870	78	4.17	1,888	151	8.00	1,913	211	11.03	2,292	210	9.16
Epping Forest	1,456	48	3.30	1,327	95	7.16	1,199	97	8.09	1,046	125	11.95
Harlow	992	56	5.65	1,033	123	11.91	938	133	14.18	895	112	12.51
Maldon	722	18	2.49	677	52	7.68	619	58	9.37	572	68	11.89
Rochford	950	32	3.37	951	39	4.10	891	72	8.08	679	76	11.19
Tendring	1,583	65	4.11	1,448	159	10.98	1,282	171	13.34	1,135	196	17.27
Uttlesford	925	14	1.51	907	32	3.53	794	45	5.67	665	63	9.47
Essex	16,181	592	3.66	15,778	1,280	8.11	14,424	1,487	10.31	13,416	1,644	12.25
Southend-on-Sea	1,995	90	4.51	1,830	164	8.96	1,645	233	14.16	1,571	301	19.16
Thurrock	1,784	79	4.43	1,676	197	11.75	1,543	218	14.13	1,515	276	18.22

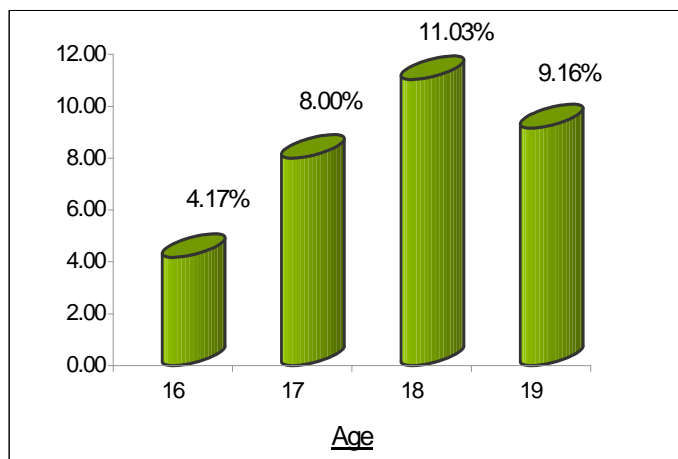
Notes:

a) Source: Table ST105, 2001 Census, ONS. © Crown Copyright, 2004

b) See glossary for explanation of 'not in education or work.'

Colchester has the 2nd lowest percentage of 19 year olds who were in neither education or work.

Fig 2.13. Residents aged 16-19 not in education or work in Colchester, 2001



Source: Table ST105, 2001 Census, ONS. © Crown Copyright, 2004

- In the 2001 Census, 8.16% (650 people) of those aged 16 –19 years in Colchester were recorded as being in neither education nor work.
- This was below the Essex (8.34%), Eastern (8.64%) and England (10.36%) averages.
- Fig 2.13 shows the percentage of residents from each age group who were not in education or work in 2001.
- As can be seen, 11.03% (211 people) of 18 year olds in Colchester were in this position.
- The lowest percentage was for those aged

Fig 2.14. Dependent children living in households with no adult in work, 2001

	All dependent children	Households with dependent children and no adult in work	% of dependent children in households with no adult in work
ENGLAND	11,006,702	1,915,386	17.40
EAST	1,202,488	150,813	12.54
Basildon	38,895	7,346	18.89
Braintree	30,545	3,303	10.81
Brentwood	14,769	1,361	9.22
Castle Point	18,677	2,122	11.36
Chelmsford	35,345	3,269	9.25
Colchester	34,456	4,187	12.15
Epping Forest	26,455	3,485	13.17
Harlow	18,575	3,377	18.18
Maldon	13,557	1,387	10.23
Rochford	17,432	1,533	8.79
Tendring	26,924	4,203	15.61
Uttlesford	15,746	921	5.85
Essex	291,376	36,494	12.52
Southend-on-Sea	35,738	6,660	18.64
Thurrock	34,348	5,642	16.43

Notes:

- a) Source: Table T01, 2001 Census, ONS. © Crown Copyright, 2004
- b) See glossary for definitions.
- c) Cells in this table have been randomly adjusted to avoid the release of confidential data.

- Dependent children are described as those who are aged 0-15 (whether or not in a family) or a person aged 16 to 18 in full-time education and living in a family with parent(s).
- In 2001 there were 34,456 dependent children in Colchester.
- At this time, 12.15% (4,187 children) of Colchester's dependent children were living in a household with no adult in work.
- This was similar to the Essex (12.52%) and Eastern (12.54%) averages but significantly lower than the proportion for England (17.40%).
- Basildon had the highest proportion of 'non-working' households in Essex with 18.89% (7,346 children). This was almost a 5th of their dependent child population.
- In comparison, Uttlesford had the lowest proportion of 'non-working' households with just 5.85% (5,642 children).

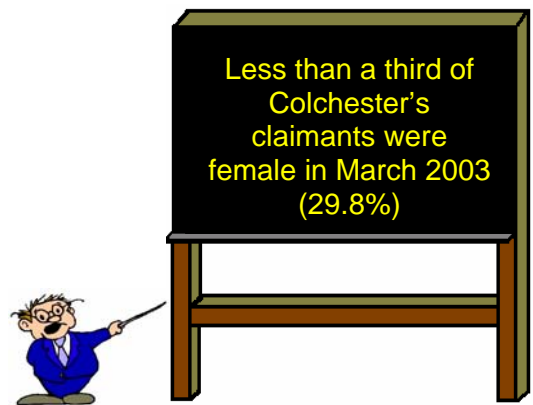
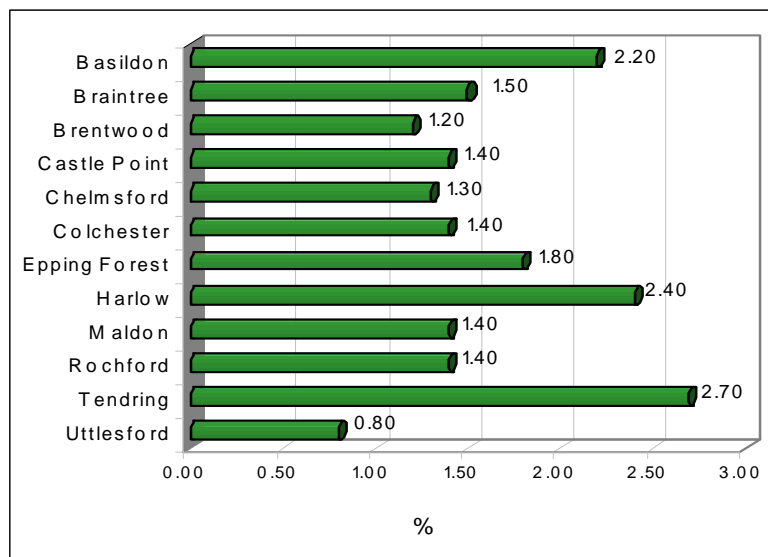
Fig 2.15. Claimant Count 2003

	Claimant Count, March 2003 [#]			
	All people aged 16-74 on census day 2001	Claimant Count level in March 2003 (thousands)	% of working-age population [~]	% claiming over 12 months, computerised claims only [*]
East	3,884,104	62.50	1.9	11.10
Basildon	119,516	2.30	2.20	7.90
Braintree	94,826	1.30	1.50	9.80
Brentwood	49,514	0.50	1.20	7.30
Castle Point	63,207	0.70	1.40	6.00
Chelmsford	115,131	1.30	1.30	13.40
Colchester	113,771	1.40	1.40	6.60
Epping Forest	87,252	1.30	1.80	11.50
Harlow	57,018	1.10	2.40	12.30
Maldon	43,056	0.50	1.40	15.50
Rochford	56,720	0.70	1.40	10.00
Tendring	95,684	2.00	2.70	11.50
Uttlesford	49,862	0.40	0.80	9.70
Essex	945,557	13.40	1.70	10.10
Southend-on-Sea	111,789	2.90	3.10	15.00
Thurrock	102,996	2.00	2.20	11.40

Notes

- a) Source: East of England Region in Figures – Volume 7, winter 2003. ONS, © Crown Copyright, 2004.
- b) # Count of claimants of unemployment-related benefit i.e. Jobseeker's Allowance.
- c) ~ Claimant Count, as a percentage of the resident working-age population of an area (see glossary for full definition).
- d) * People who have been claiming for more than 12 months (computerised claims only), as a percentage of total computerised claimants.
- e) Computerised Claims – see glossary for definition.

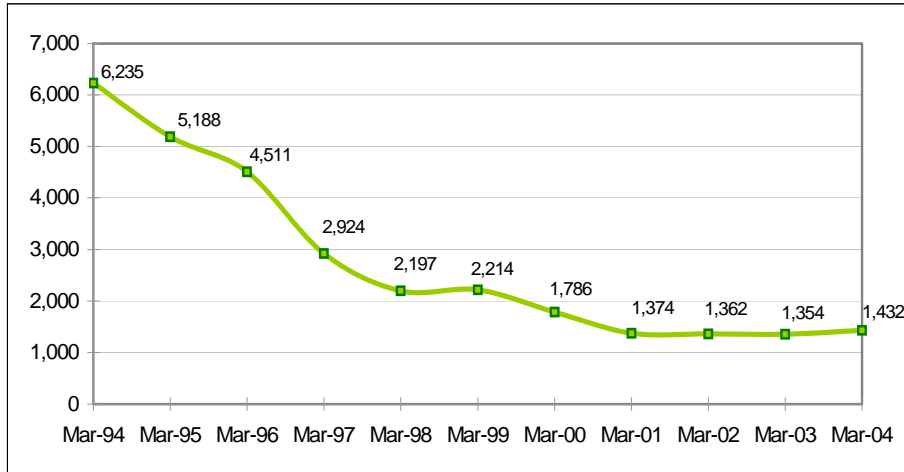
Fig 2.16. Claimant count rate by local area, 2003 (Percentage)



Source: East of England Region in Figures – Volume 7, winter 2003. ONS, © Crown Copyright, 2004.

- The claimant count measures the number of people claiming unemployment-related benefits such as Jobseeker's Allowance.
- The claimant count rate for Colchester in March 2003 was 1.40% (approx. 1,400 people).
- This was below both the Essex (1.70%) and Eastern (1.90%) rates.
- Additionally, 6.60% of those claiming computerised benefits had been claiming for over 12 months.
- Fig 2.16 shows that Tendring had the highest claimant count in Essex with 2.70% whilst Uttlesford had the lowest with 0.80%.

Fig 2.17 Claimant count in Colchester 1994-2004



- Fig 2.17 shows that within Colchester borough, the claimant count has decreased significantly since March 1994, by almost 5,000 people.
- However, in the last 4 years it has begun to stabilise at a mean average of 1,381.

Notes

- Source: Nomisweb, ONS © Crown Copyright, 2004
- Proportions for dates from 2002 onwards are calculated using the 2001 resident working age population.
- The frozen ward boundaries are revised from January 1996.

Fig 2.18 Economic Activity and Employment – Gender Breakdown

	Males	Females
People aged 16-74 years Source: Table T07, 2001 Census, ONS.	57,216	56,551
Economically active	43,536	34,619
Part-time	1,994	12,533
Full-time	31,181	16,698
Self-employed	7,358	1,482
Unemployed	1,512	1,149
Full-time student	1,491	1,757
Economically inactive	13,680	21,932
Retired	6,179	8,114
Student	3,394	2,976
Looking after home/family	358	7,076
Permanently sick/disabled	2,573	2,304
Other	1,176	1,462
Source: Table KS09a, 2001 Census, ONS		
Industry		
Service	28,949	30,339
Construction	5,298	546
Manufacturing	6,392	2,056
Primary	1,173	360
Source: Table ST036, 2001 Census, ONS		
Occupation		
Managers and Senior Officials	8,279	3,601
Professional Occupations	4,773	3,293
Associate Professional and Technical Occupations	7,259	4,634
Administrative and Secretarial Occupations	2,225	7,528
Skilled Trades Occupations	7,906	715
Personal Service Occupations	893	4,796
Sales and Customer Service Occupations	1,735	4,257
Process; Plant and Machine Operatives	4,318	724
Elementary Occupations	4,430	3,760
Source: Table T07, 2001 Census, ONS		
Unemployment aged 16-74	1,512	1,149
Unemployment aged 16-19	190	136
Source: Table ST028, 2001 Census, ONS		
Young people not in education or work		
16 years old	35	43
17 years old	82	69
18 years old	94	117
19 years old	108	102
Source: Table ST105, 2001 Census, ONS		

Note: All data are © Crown Copyright, 2004

Fig 2.19. Economic Activity for the wards

All people aged 16-74														
Area	All people aged 16 - 74	Economically active					Economically Inactive					Travel to work by:		
		Employees (a)		Self - employed	Unemployed	Full-time student	Retired	Student	Looking after home/family	Permanently sick/disabled	Other	People who work mainly at or from home	Car or van (b)	Public transport
		Part-time	Full-time											
England	35,532,091	4,196,041	14,499,241	2,954,988	1,188,855	917,582	4,811,595	1,660,564	2,316,229	1,884,901	1,102,095	2,055,224	13,811,354	3,326,482
East of England	3,884,104	484,740	1,654,889	359,109	101,023	89,995	543,197	140,348	261,876	151,711	97,216	243,485	1,680,948	279,192
Berechurch	6,025	821	2,692	426	155	125	707	156	384	331	228	267	2,535	502
Birch and Winstree	3,611	457	1,482	484	65	77	488	112	264	113	69	329	1,731	268
Castle	5,354	573	2,546	416	147	140	632	313	227	246	114	294	1,607	660
Christ Church	3,066	393	1,368	303	90	102	291	175	191	93	60	197	1,112	301
Copford and West Stanway	1,333	171	591	165	22	41	157	37	90	41	18	117	651	136
Dedham and Langham	2,076	265	757	290	32	29	357	66	177	48	55	211	882	124
East Donyland	1,704	245	753	142	35	43	206	52	116	75	37	77	845	139
Fordham and Stour	3,703	493	1,422	539	56	87	498	104	309	134	61	380	1,702	267
Great Tey	2,017	295	753	318	23	42	274	61	149	67	35	225	943	143
Harbour	3,962	547	1,701	282	129	96	469	110	285	213	130	185	1,650	354
Highwoods	5,579	652	2,995	349	137	107	388	162	425	239	125	287	2,606	686
Lexden	3,825	488	1,373	401	73	92	695	153	280	178	92	249	1,475	313
Marks Tey	1,930	251	885	205	46	56	236	41	100	74	36	150	956	170
Mile End	4,624	552	2,277	388	72	93	509	123	277	236	97	258	1,772	750
New Town	6,724	675	3,457	471	225	183	440	493	327	273	180	350	2,287	527
Prettygate	5,437	810	2,104	379	94	163	1,063	165	317	238	104	284	2,288	429
Pyefleet	1,794	233	614	292	32	41	288	50	126	75	43	179	819	106
Shrub End	7,165	1,000	3,696	371	195	131	536	196	588	250	202	405	2,636	513
St Andrew's	6,852	860	2,188	330	277	307	593	950	566	557	224	241	2,160	544
St Anne's	6,247	847	2,624	423	183	187	698	308	438	359	180	284	2,572	551
St John's	3,821	582	1,560	281	60	130	701	98	227	117	65	248	1,688	314
Stanway	5,521	783	2,408	472	100	160	812	130	316	236	104	325	2,608	451
Tiptree	5,556	715	2,279	606	125	110	865	154	401	207	94	358	2,567	321
West Bergholt and Eight Ash Green	3,686	478	1,507	417	78	88	567	93	244	146	68	292	1,668	357
West Mersea	4,902	634	1,635	631	85	89	1,091	136	328	170	103	353	2,089	220
Wivenhoe Cross	3,538	244	710	114	33	395	224	1,656	77	54	31	98	778	190
Wivenhoe Quay	3,719	463	1,502	349	93	134	507	278	203	107	83	237	1,472	454
Colchester	113,771	14,527	47,879	9,844	2,662	3,248	14,292	6,372	7,432	4,877	2,638	6,880	46,102	9,788
Essex	945,557	117,893	396,702	92,205	23,386	20,346	137,931	28,547	68,476	37,760	22,311	57,636	395,922	95,597

Source: Table KS09a & KS015, 2001 Census, ONS. © Crown Copyright, 2002.

Notes: (a) Part-time is defined as working 30 hours or less a week. Full-time is defined as working 31 or more hours a week.

(b) Includes driving a car or van, being a passenger in a car or van and those using a taxi or minicab to travel to work.

Glossary

This document includes the definitions of terms used within this chapter of Colchester Counts. These definitions are provided by the Office for National Statistics and are used in conjunction with the 2001 Census.

Definitions are listed in alphabetical order and will be updated with further releases of data.

For more information log on to the National Statistics website:

www.statistics.gov.uk

Age

Age is derived from the date of birth question in the 2001 Census and is the age at a person's last birthday.

Claimant Count

The number of people claiming unemployment-related benefits i.e., Jobseeker's Allowance.

At a national and regional level, the claimant count rate is normally calculated by expressing the number of people claiming unemployment-related benefits as a percentage of the estimated total workforce, which is the sum of claimants, employee jobs, self-employment jobs, HM armed forces and government-supported trainees.

At a subregional level, a different denominator is used: the resident working-age population of the area. Where national and regional claimant count rates are presented in the same table as subregional rates, then the denominator for all the rates is also the resident working-age population of the area.

Computerised Claims

The number of people claiming unemployment-related benefits and Jobcentre vacancies are derived from administrative records.

Dependent Child

A dependent child is a person aged 0 to 15 in a household (whether or not in a family) or aged 16 to 18 in full-time education and living in a family with his or her parent(s). An adult in a household is any person who is not a dependent child.

Economic Activity

The Economic Activity questions in the Census only apply to those aged between 16 and 74. They relate to whether or not a person was working or looking for work in the week before Census.

Economically Active

All people who were working in the week before the Census are described as economically active. In addition, the category includes all those who were not working but were looking for work and were available to start work within 2 weeks. Full-time students who are economically active are included but are identified separately in the classification.

Economically Inactive

Specific categories of Economic Inactivity are; Retired, Student (excludes those students who were working or in some other way were economically active), Looking after family/home, Permanently sick/disabled and Other. A person who is looking for work but is not available to start work within 2 weeks is counted as Economically Inactive.

Employed

Any person who did paid work in the week before the Census, whether as an employee or self-employed, is described as employed or in employment. 'Paid work' includes casual or temporary work, even if only for one hour; being on a government-sponsored training scheme; being away from a job/business ill, on maternity leave, on holiday or temporarily laid off; or doing paid or unpaid work for their own or family business.

Full-time student

A full-time student is a person of any age who has indicated that they are a schoolchild or student in full-time education.

Full-time working

Working full-time is defined as working 31 hours or more a week.

Industry

The industry in which a person works is determined by the responses to the question asking for a description of the business of the person's employer (or own business if self-employed). The responses are coded to a modified version of the UK Standard Industrial Classification of Economic Activities 1992 – UK SIC (92). Available from www.statistics.gov.uk

Long-term Unemployed

A person is defined as being long-term unemployed at Census if the year they last worked was 1999 or earlier.

Not in education or work

Those residents who are either unemployed or economically inactive for reasons other than being a student.

Part-time Working

Working part-time is defined as working 30 hours or less a week.

Pensioner

This term is used in some tables as shorthand for 'person of pensionable age.' Pensionable age is 65 and over for males and 60 and over for females.

Permanently sick/disabled

This is a sub-category of 'economically inactive.' There is no direct connection with limiting long-term illness. See also Economically inactive, Limiting Long-term illness.

Population Base

The 2001 Census has been conducted on a resident basis. This means the statistics relate to where people usually live, as opposed to where they are on Census night. Students and schoolchildren studying away from the family home are counted as resident at their term-time address. Residents away from home on Census night were required to be included on the Census form at their usual/resident address. Wholly absent households were legally required to complete a Census form on their return.

Resident Population

See 'Population Base' definition above.

Self-employed

The distinction between employee and self-employed is determined by the response to the question 'Do (did) you work as an employee or are (were) you self-employed?' It relates to the person's main job in the week before Census.

Unemployed

A person is defined as unemployed if he or she is not in employment, is available to start work in the next 2 weeks and has either looked for work in the last 4 weeks or is waiting to start a new job.

Working age

Working age is defined as 16 to 64 for males and 16 to 59 for females.

This information is Crown Copyright and may only be reproduced in public or published documents with the permission of HMSO and acknowledgement of the Source (Office for National Statistics, 2002). Colchester Borough Council holds a Click-use License permitting reproduction (these can be obtained free from www.clickanduse.hmso.gov.uk.)
