



## POPULATION

This document is designed to look specifically at population data provided by the Office for National Statistics and is collated from the 2001 Census and 'Key Population and Vital Statistics 2001.' It focuses on population statistics for Colchester and covers topics such as:

- ⊙ Resident population
- ⊙ Age structure
- ⊙ Population density
- ⊙ Births and Fertility
- ⊙ Conceptions
- ⊙ Mortality

The data are presented in both tables and charts and these are complemented by basic written summaries. Where possible, comparisons with other areas and previous years have been included. Additionally, a glossary of definitions is provided at the end of the document.

For further information on this or any of our other documents please call Cathryn-Ann Cansdale on (01206) 282109 or email [cathryn.cansdale@colchester.gov.uk](mailto:cathryn.cansdale@colchester.gov.uk).

Alternatively, you can log on to the Colchester Borough Council website and click on Research and Statistics to view the very latest information – [www.colchester.gov.uk](http://www.colchester.gov.uk).

Source: National Statistics website: [www.statistics.gov.uk](http://www.statistics.gov.uk)

Crown copyright material is reproduced with the permission of the Controller HMSO.

Colchester Borough Council holds a Click-use license permitting reproduction (License Number: C02W0001762).

# Population

## Table of Contents

<b>Population</b>	<b>3</b>
Fig 1.1. Residents population for Essex, 2001 (table)	3
Fig 1.2. The Essex population by district, 2001 (chart)	3
Fig 1.3. Age structure for Colchester, 2001 (table)	4
Fig 1.4. Population pyramid for Colchester, 2001 (chart)	4
Fig 1.5. Age groups for the areas, 2001 (chart)	5
Fig 1.6. Population density for the Essex districts (table)	5
<b>Vital Statistics</b>	<b>6</b>
Fig 1.7. Births and fertility in Colchester, 2001 (table)	6
Fig 1.8. Total live births in Colchester, 2001 (chart)	6
Fig 1.9. Conceptions in 2000 (table)	7
Fig 1.10. Conception rate per 1,000 women aged 15-17 (chart)	7
Fig 1.11. Mortality in Colchester, 2001 (table)	8
<b>Fig 1.12. Population – Gender Breakdown (table)</b>	<b>9</b>
<b>Fig 1.13. Population for the wards (table)</b>	<b>10</b>
<b>Glossary</b>	<b>11</b>

# Population

Fig 1.1. Resident Population for Essex, 2001

Area	All people	Population by age		
		0-15	16-74	75 & over
<b>England</b>	<b>49,138,831</b>	<b>9,901,581</b>	<b>35,532,091</b>	<b>3,705,159</b>
<b>East of England</b>	<b>5,388,140</b>	<b>1,082,761</b>	<b>3,884,104</b>	<b>421,275</b>
Basildon	165,668	35,346	119,516	10,806
Braintree	132,179	27,664	94,826	9,689
Brentwood	68,456	13,071	49,514	5,871
Castle Point	86,608	16,703	63,207	6,698
Chelmsford	157,072	31,346	115,131	10,595
<b>Colchester</b>	<b>155,796</b>	<b>30,925</b>	<b>113,771</b>	<b>11,100</b>
Epping Forest	120,896	23,774	87,252	9,870
Harlow	78,768	16,902	57,018	4,848
Maldon	59,418	12,181	43,056	4,181
Rochford	78,489	15,518	56,720	6,251
Tendring	138,539	24,220	95,684	18,635
Uttlesford	68,946	14,134	49,862	4,950
<b>Essex</b>	<b>1,310,835</b>	<b>261,784</b>	<b>945,557</b>	<b>103,494</b>
<b>Southend-on-Sea</b>	<b>160,257</b>	<b>32,117</b>	<b>111,789</b>	<b>16,351</b>
<b>Thurrock</b>	<b>143,128</b>	<b>31,428</b>	<b>102,996</b>	<b>8,704</b>

Notes:

a) Source: KS02, 2001 Census, ONS. © Crown Copyright, 2004.

b) Students are taken to be resident at their term time address.

- Data released from the recent Census indicates that the Essex population was 1,310,835 on Census day 2001 (29<sup>th</sup> April 2001).
- Colchester had the third largest population in Essex, with 155,796 people in the borough; it accounted for 11.89% of the Essex County population.
- Basildon was the largest district in Essex (165,668 people) making up 12.64% of the population and was followed by Chelmsford (157,072 people) which made up 11.98%.
- In comparison, the smallest district in Essex was Maldon, holding 4.53% of the population (59,418 people).

There are 77,123 men  
(49.50%) in Colchester  
and 78,673 women  
(50.50%).



Fig 1.2. The Essex Population by District, 2001

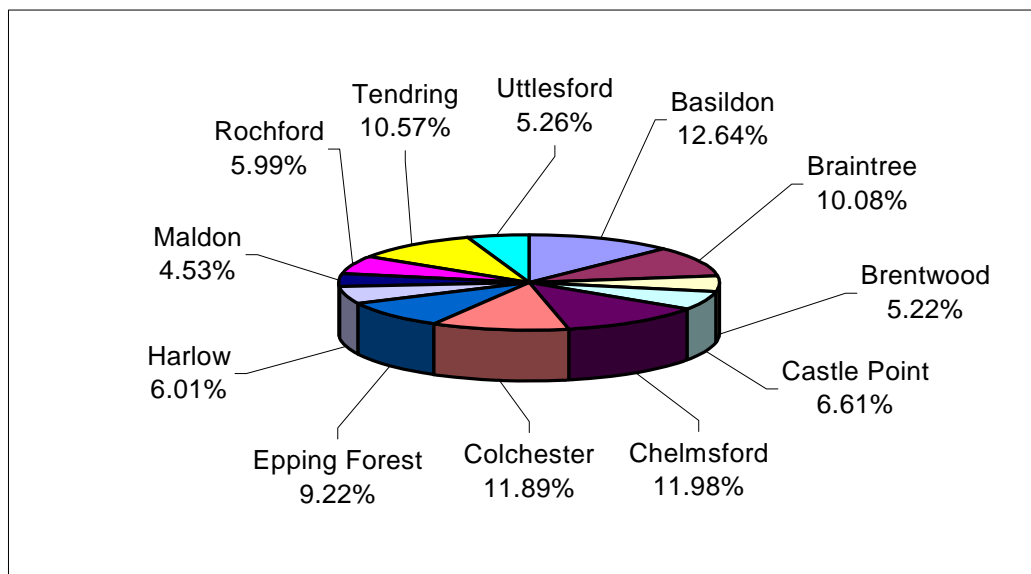


Fig 1.3. Age Structure for Colchester, 2001

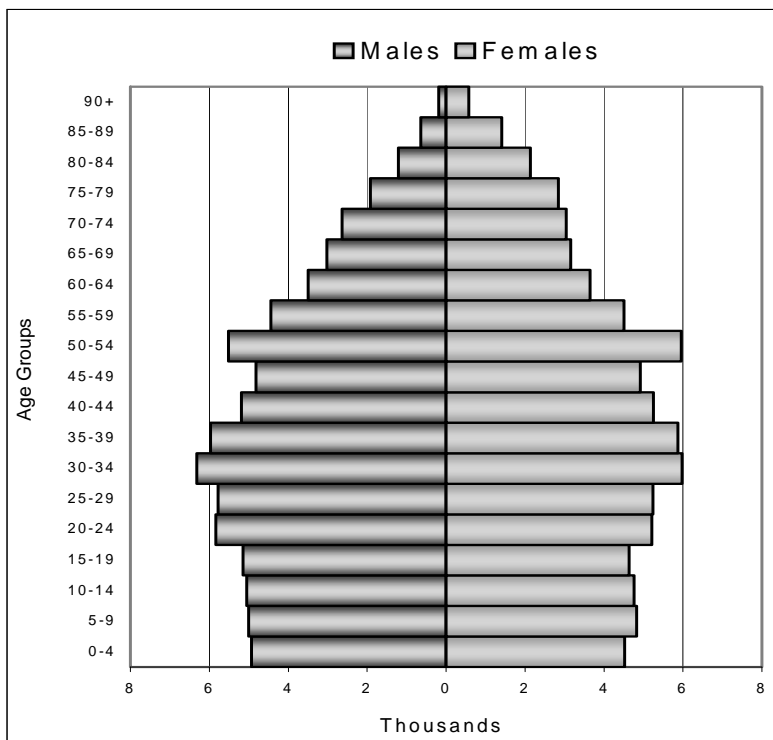
Age	All People	% Of total population	Male	Female
0-4	9,455	6.07	4,930	4,523
5-9	9,833	6.31	5,005	4,831
10-14	9,812	6.30	5,049	4,762
15-19	9,787	6.28	5,146	4,638
20-24	11,050	7.09	5,838	5,212
25-29	11,022	7.07	5,782	5,240
30-34	12,300	7.89	6,318	5,982
35-39	11,843	7.60	5,968	5,875
40-44	10,438	6.70	5,183	5,255
45-49	9,741	6.25	4,818	4,922
50-54	11,477	7.37	5,515	5,964
55-59	8,943	5.74	4,440	4,503
60-64	7,145	4.59	3,496	3,648
65-69	6,174	3.96	3,018	3,157
70-74	5,676	3.64	2,632	3,044
75-79	4,758	3.05	1,915	2,843
80-84	3,343	2.15	1,206	2,137
85-89	2,046	1.31	638	1,408
90+	953	0.61	186	579
<b>Total</b>	<b>155,796</b>	<b>100.00</b>	<b>77,083</b>	<b>78,523</b>

Notes:

- a) Source: Table UV04, 2001 Census, ONS. © Crown Copyright, 2004
- b) Figures may not sum due to rounding.

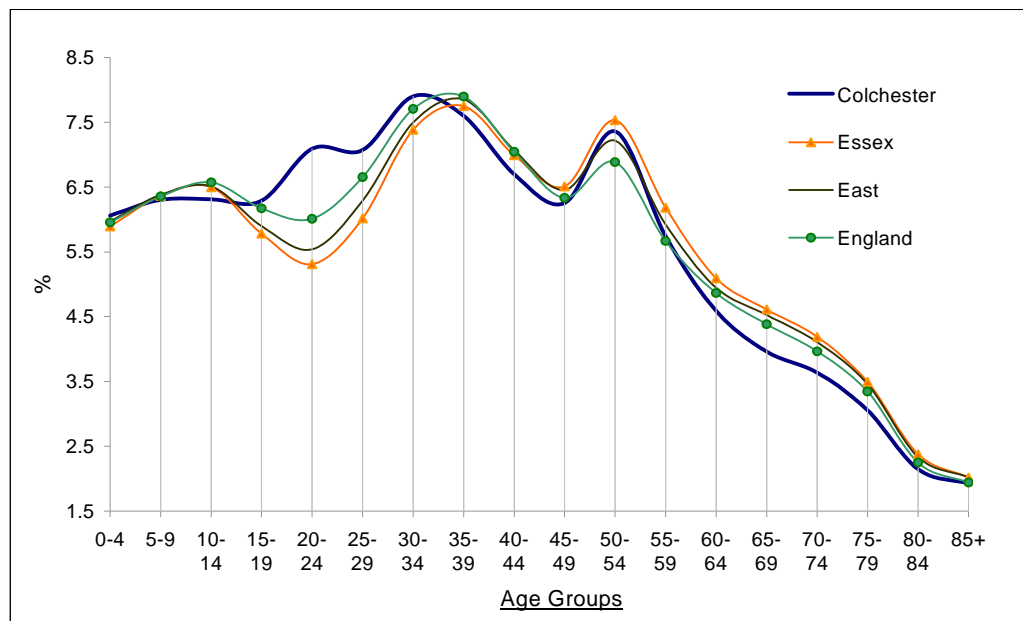


Fig 1.4. Population Pyramid for Colchester, 2001



- The largest age group in Colchester was the 30-34 age group, with 12,300 people (7.84%), followed closely by the 35-39 age group with 11,843 people (7.55%).
- In contrast, the smallest age group in Colchester was the 90+ age group with 953 people, making up only 0.61% of the borough population.
- In 2001, there were 38,887 children and young people aged under 20 in Colchester, comprising almost a quarter (24.96%) of the total population.
- Additionally, there were 26,411 people of pensionable age (women from age 60, men from 65). This accounted for 16.95% of the borough population.
- The population pyramid opposite illustrates the age structure of Colchester on Census day 2001.

Fig 1.5. Age Groups for Colchester and the areas, 2001



- The age structure of Colchester on Census day 2001 was broadly similar to that of Essex, the East and England. The biggest differences appear to be between the age of 15-29 years.
- In Colchester, a higher percentage of the population was in the 15-29 age band when compared with Essex, the East and England. For example, in Colchester, 20-24 year olds made up 7.09% of the population. However, this was only 5.31% of Essex, 5.54% of the East and 6.01% of England.
- Fig 1.5 also shows that when compared to Essex, the East and England, Colchester's proportion of older age groups was significantly lower in 2001.

Fig 1.6. Population Density for the Essex Districts 2001

Area	Area hectares	Area sq. km	People per sq. km
<b>East</b>	<b>191.10</b>	<b>19,110</b>	<b>282</b>
Basildon	1.10	110	1,508
Braintree	6.12	612	217
Brentwood	1.53	153	447
Castle Point	0.45	45	1,923
Chelmsford	3.39	339	464
<b>Colchester</b>	<b>3.29</b>	<b>329</b>	<b>474</b>
Epping Forest	3.39	339	357
Harlow	0.31	31	2,585
Maldon	3.59	359	166
Rochford	1.69	169	464
Tendring	3.38	338	411
Uttlesford	6.41	641	108
<b>Essex</b>	<b>34.65</b>	<b>3,465</b>	<b>379</b>
<b>Southend-on-Sea</b>	<b>0.42</b>	<b>42</b>	<b>3,840</b>
<b>Thurrock</b>	<b>1.63</b>	<b>163</b>	<b>877</b>

- Colchester's area covers 329 square kilometres making its size similar to Tendring (338 sq. km), Chelmsford (339 sq. km) and Epping Forest (339 sq. km).
- The population density of Colchester borough is 474 people per square kilometre. This means that Colchester is the fourth most densely populated area in Essex County, followed closely by Chelmsford and Rochford (both 464 people per sq. km).

Notes

- Source: Office for National Statistics, © Crown Copyright 2004
- See glossary for definition.

## Vital Statistics

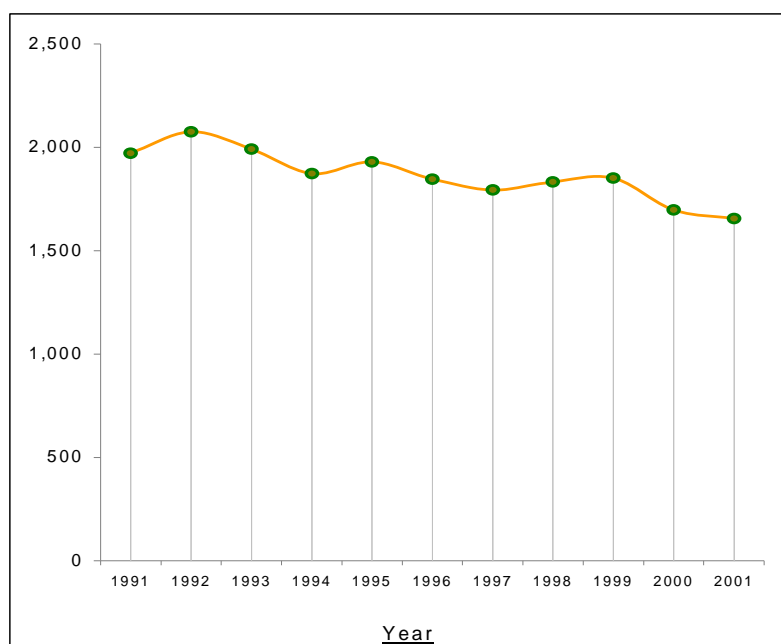
Fig 1.7. Births and fertility in Colchester, 2001

Area	Estimated resident population at 30 June 2001 (thousands)	Live births				% outside marriage		
		Male	Female	Total	TFR <sup>#</sup>	All	% jointly registered, same address <sup>*</sup>	Proportion under 2,500 grams <sup>**</sup>
<b>England</b>	<b>49,181.3</b>	<b>288,743</b>	<b>275,001</b>	<b>563,744</b>	<b>1.64</b>	<b>39.6</b>	<b>63.3</b>	<b>7.6</b>
<b>East of England</b>	<b>5,394.9</b>	<b>30,729</b>	<b>29,361</b>	<b>60,090</b>	<b>1.67</b>	<b>35.9</b>	<b>71.0</b>	<b>6.7</b>
Basildon	165.9	1,039	1,035	2,074	1.77	44.0	67.9	6.7
Braintree	132.5	803	702	1,505	1.71	32.4	74.6	7.0
Brentwood	68.5	345	331	676	1.55	28.0	75.1	5.9
Castle Point	86.7	429	406	835	1.64	39.3	77.7	6.3
Chelmsford	157.2	803	809	1,612	1.48	31.3	71.4	6.1
<b>Colchester</b>	<b>156.0</b>	<b>835</b>	<b>821</b>	<b>1,656</b>	<b>1.50</b>	<b>34.9</b>	<b>71.1</b>	<b>5.7</b>
Epping Forest	121.0	706	661	1,367	1.64	35.3	72.5	6.4
Harlow	78.9	562	529	1,091	1.84	45.0	70.7	6.5
Maldon	59.6	352	260	612	1.70	33.3	76.5	4.7
Rochford	78.7	395	418	813	1.67	30.8	77.2	6.2
Tendring	138.8	593	546	1,139	1.71	46.5	70.2	6.3
Uttlesford	69.0	370	333	703	1.68	25.7	77.3	5.6
<b>Essex</b>	<b>1,312.7</b>	<b>7,232</b>	<b>6,851</b>	<b>14,083</b>	<b>1.65</b>	<b>36.5</b>	<b>72.2</b>	<b>6.2</b>
<b>Southend-on-Sea</b>	<b>160.4</b>	<b>968</b>	<b>936</b>	<b>1,904</b>	<b>1.83</b>	<b>48.1</b>	<b>65.5</b>	<b>6.2</b>
<b>Thurrock</b>	<b>143.2</b>	<b>934</b>	<b>863</b>	<b>1,797</b>	<b>1.66</b>	<b>46.7</b>	<b>68.1</b>	<b>5.8</b>

### Notes

- Source: Table 4.2, 2001 Key Population and Vital Statistics, ONS. © Crown Copyright, 2004
- # TFR – Total Fertility Rate (see glossary for definitions).
- \* Number of live births outside marriage, which are registered by both parents who gave the same address of usual residence, expressed as a percentage of all live births outside marriage.
- \*\* Number of live births less than 2,500 grams as a percentage of all live births for which the birth weight is known.

Fig 1.8. Total Live Births in Colchester, 2001



- In 2001, there were 10.6 live births per 1,000 resident population in Colchester, compared with 11.5 nationally.
- Aside from two slight increases, live birth rates in Colchester borough have been gradually falling over the last 10 years (fig 1.8).
- In 1991, there were 1,971 live births in Colchester, compared to 1,656 in 2001, a drop of 315.
- In 2001, 50.42% (835) of these were male and 49.58% (821) were female.

### Notes

- Source: Key Population and Vital Statistics, ONS. © Crown Copyright, 2004
- Direct comparisons between years are difficult to make, as there have been small boundary changes during this ten-year period.

- The 'Total Fertility Rate' (TFR) indicates the average number of children that would be born to a woman if the current age-specific (the number of live births per 1,000 women of each age) patterns of fertility persisted throughout her childbearing life.
- In 2001, the TFR was 1.50. This was below the Essex, (1.65) regional (1.67) and national rate (1.64).
- As with the number of live births, in Colchester the TFR has also been declining over the last 10 years. For example, in 1991, the TFR was 1.75 and in 2001 it was 1.50, a fall of 0.25.
- It is perhaps important to note at this point that for a developed country to continue to replace its population in the longer term it needs to ensure a TFR of around 2.1. We can therefore see that Colchester's rate has been below what is needed for the last ten years and may continue to decline in the future.

- Data for Colchester over the last 10 years show that the number of children born outside marriage has been steadily increasing.
- Over a third (34.9%) of all live births in 2001 were born outside marriage in Colchester. This is a significant rise from 28.1% in 1995 and 24.0% in 1991.
- In 2001, 5.7% of all live births (for which the birth weight is known) in Colchester had significantly low birth weights (those under 2,500 grams). Interestingly, this figure has fallen from 6.6% in 1995 and is more in line with the 1991 percentage of 5.9%.
- Additionally, this is a much lower percentage than that of Essex (6.2%) and England (7.6%) in 2001.

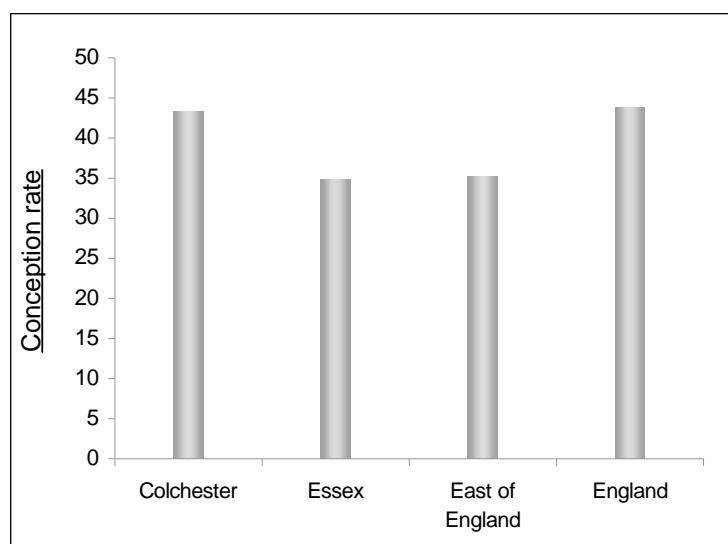
Fig 1.9. Conceptions in 2000

Area	All ages	Under 18	All ages conception rate per 1,000 women aged 15-44	Under 18 conception rate per 1,000 women aged 15-17
Colchester	2,084	115	64.6	43.3
Essex	17,585	785	68.6	34.9
East of England	74,492	3,331	68.9	35.3
England	729,063	38,699	71.3	43.9

Notes

- a) Source: Key Population and Vital Statistics, ONS. © Crown Copyright, 2004
- b) See glossary for details

Fig 1.10. Conception rate per 1,000 women aged 15-17



- In 2000, the conception rate per 1,000 women aged 15-44 stood at 64.6. This was below the county (68.6) regional (68.9) and national (71.3) rate.
- The conception rate per 1,000 women aged 15-17 in Colchester was 43.3 in 2000.
- As figure 1.10 illustrates, this was a much higher than the county (34.9) and regional (35.3) rate but almost in line with the national rate of 43.9.
- It is also a big increase on 1999 (36.8) and made Colchester the 3<sup>rd</sup> highest in Essex in 2001 after Harlow (53.1) and Basildon (48.0).



Fig 1.11. Mortality in Colchester, 2001

Area	Estimated resident population at 30 June 2001 (thousands)	Deaths				Deaths under 1 year						
		Male	Female	Total	SMR #	Stillbirths <sup>↑</sup>	Under 1 week	Under 4 weeks	Under 1 year	Stillbirth rate*	Perinatal mortality rate*	Infant mortality rate*
<b>England</b>	<b>49,181.3</b>	<b>236,038</b>	<b>260,056</b>	<b>496,094</b>	<b>98</b>	<b>2,991</b>	<b>1,519</b>	<b>2,017</b>	<b>3,040</b>	<b>5.3</b>	<b>8.0</b>	<b>5.4</b>
<b>East of England</b>	<b>5,394.9</b>	<b>25,264</b>	<b>28,023</b>	<b>53,287</b>	<b>92</b>	<b>291</b>	<b>136</b>	<b>176</b>	<b>271</b>	<b>4.8</b>	<b>7.1</b>	<b>4.5</b>
Basildon	165.9	683	728	1,411	93	10	6	9	14	4.8	7.7	6.8
Braintree	132.5	593	763	1,356	101	8	2	3	5	5.3	6.6	3.3
Brentwood	68.5	298	383	681	85	4	1	1	2	5.9	7.4	3.0
Castle Point	86.7	373	449	822	88	1	1	1	1	1.2	2.4	1.2
Chelmsford	157.2	638	640	1,278	85	4	2	7	9	2.5	3.7	5.6
<b>Colchester</b>	<b>156.0</b>	<b>669</b>	<b>739</b>	<b>1,408</b>	<b>91</b>	<b>8</b>	<b>2</b>	<b>3</b>	<b>6</b>	<b>4.8</b>	<b>6.0</b>	<b>3.6</b>
Epping Forest	121.0	554	623	1,177	88	2	2	3	4	1.5	2.9	2.9
Harlow	78.9	310	332	642	95	6	3	4	5	5.5	8.2	4.6
Maldon	59.6	253	318	571	94	3	-	-	1	4.9	4.9	1.6
Rochford	78.7	354	369	723	84	-	1	1	3	-	1.2	3.7
Tendring	138.8	1,029	1,178	2,207	94	8	4	5	8	7.0	10.5	7.0
Uttlesford	69.0	308	383	691	97	2	2	2	3	2.8	5.7	4.3
<b>Essex</b>	<b>1,312.7</b>	<b>6,062</b>	<b>6,905</b>	<b>12,967</b>	<b>92</b>	<b>56</b>	<b>26</b>	<b>39</b>	<b>61</b>	<b>4.0</b>	<b>5.8</b>	<b>4.3</b>
<b>Southend-on-Sea</b>	<b>160.4</b>	<b>939</b>	<b>1,258</b>	<b>2,197</b>	<b>104</b>	<b>14</b>	<b>1</b>	<b>4</b>	<b>6</b>	<b>7.3</b>	<b>7.8</b>	<b>3.2</b>
<b>Thurrock</b>	<b>143.2</b>	<b>568</b>	<b>592</b>	<b>1,160</b>	<b>99</b>	<b>11</b>	<b>1</b>	<b>2</b>	<b>5</b>	<b>6.1</b>	<b>6.6</b>	<b>2.8</b>

**Notes**

- a) Source: Table 4.2, 2001 Key Population and Vital Statistics, ONS. © Crown Copyright, 2004
- b) # SMR – Standardised Mortality Ratio (see glossary for definitions).
- c) <sup>↑</sup> Definitional change after 1 October 1992 (see glossary for details)
- d) \* These mortality rates are based on all births without any adjustment for factors such as low birthweight and, therefore, should be interpreted with care.
- e) Rates based on fewer than 20 cases are shown in *green*.

- The standardised mortality ratio (the ratio of actual deaths to expected deaths if national death rates had applied) indicates that mortality rates in Colchester have slightly improved.
- Since 1991, local rates have been consistently below the national rate and either lower or the same as county rates. The SMR in 2001 for Colchester was 91. This was 9% lower than the national average.
- The crude death rate in Colchester (deaths per thousand resident population) was 9.0 in 2001 compared with 9.9 for the county and 10.1 for England.
- Colchester's Infant Mortality Rate (number of deaths at ages under one year, per 1,000 live births) in 2001 was 3.6; this was below the Essex (4.3) regional (4.5) and national rate (5.4).
- Encouragingly, there have been improvements in Colchester's IMR where it has fallen from 4.5 in 1997 to 3.6 in 2001.
- Additionally, the number of stillbirths has fallen from 5.5 in 1997 to 4.8 in 2001. Whilst, perinatal mortality (the number of stillbirths plus the number of deaths under 7 days, per 1,000 live births and stillbirths) has increased from 4.8 in 1992 to 6.0 in 2001.

**Fig 1.12 Population – Gender Breakdown**

	<b>Males</b>	<b>Females</b>
<b>Population</b>		
Total number of people	77,123	78,673
Aged 0-14	14,984	14,116
Aged 15-74	58,154	57,440
Aged 75 and over	3,945	6,967
Source: Office for National Statistics, © Crown Copyright 2004		
<b>Vital Statistics</b>		
Total Live Births	835	821
Total Deaths	669	739
Source: Key Population and Vital Statistics, ONS. © Crown Copyright, 2004		

### **Population of the wards**

- Fig 1.13 looks at the population and age structure of the wards located in Colchester borough.
- It shows that Shrub End had the highest number of 0-15 years olds in Colchester making up 26.59% (2,799 people) of its ward population.
- Just 10.52% (436 people) of those living in Wivenhoe Cross were aged between 0 and 15 years. This was the lowest percentage in Colchester, but was followed closely by Castle ward with 13.24% (931 people).
- At this time 113,771 people in Colchester were aged 16-74 years, accounting for almost three quarters (73.03%) of the borough population.
- Within the borough, Wivenhoe Cross had the highest percentage of 16-74 year olds, with over three quarters (85%, 3,538 people) of its population in this age group.
- Alternatively, Shrub End had the lowest percentage of 16-74 year olds (68.06%, 7,165 people) although this still accounted for more than half of its ward population.
- The smallest age group in Colchester included those aged 75 years or more (7.12%, 11,100 people).
- West Mersea had the highest percentage of over 75 year olds in Colchester, although this was well under a quarter of their ward population (13.30%, 921 people).
- In comparison, only 3.20% (243 people) of Highwood's ward population was aged over 75 years. This was the lowest percentage in Colchester.

# Fig 1.13. Population for the wards

Area	People aged:																
	All people	0 - 4	5 - 7	8 - 9	10 - 14	15	16 - 17	18 - 19	20 - 24	25 - 29	30 - 44	45 - 59	60 - 64	65 - 74	75 - 84	85 - 89	90 & over
<b>England</b>	<b>49,138,831</b>	<b>2,926,238</b>	<b>1,838,668</b>	<b>1,283,861</b>	<b>3,229,047</b>	<b>623,767</b>	<b>1,231,266</b>	<b>1,177,571</b>	<b>2,952,719</b>	<b>3,268,660</b>	<b>11,127,511</b>	<b>9,279,693</b>	<b>2,391,830</b>	<b>4,102,841</b>	<b>2,751,135</b>	<b>637,701</b>	<b>316,323</b>
<b>East of England</b>	<b>5,388,140</b>	<b>321,612</b>	<b>204,059</b>	<b>139,737</b>	<b>350,829</b>	<b>66,524</b>	<b>131,725</b>	<b>119,602</b>	<b>298,533</b>	<b>338,850</b>	<b>1,207,860</b>	<b>1,055,638</b>	<b>266,555</b>	<b>465,341</b>	<b>312,356</b>	<b>73,130</b>	<b>35,789</b>
Berechurch	8,367	491	378	277	624	115	219	227	576	590	2,022	1,434	313	644	371	65	21
Birch and Winstree	4,846	276	154	128	348	71	136	99	203	230	1,089	1,189	280	385	204	41	13
Castle	7,032	288	172	122	290	59	136	169	666	799	1,502	1,252	330	500	462	191	94
Christ Church	4,201	239	154	114	314	53	114	117	240	297	1,033	850	173	242	186	52	23
Copford and West Stanway	1,876	118	65	46	103	29	51	47	68	79	454	414	99	121	101	45	36
Dedham and Langham	2,906	150	116	71	196	28	52	43	75	87	601	754	165	299	202	46	21
East Donyland	2,376	162	98	70	151	36	65	54	116	158	582	452	116	161	118	26	11
Fordham & Stour	5,113	317	216	136	325	61	137	81	202	245	1,103	1,265	289	381	251	63	41
Great Tey	2,764	174	109	77	184	20	77	54	85	106	590	719	159	227	139	33	11
Harbour	5,701	363	228	179	420	66	160	111	314	417	1,461	888	223	388	312	108	63
Highwoods	7,592	646	357	243	452	72	151	135	594	891	2,142	1,159	197	310	165	50	28
Lexden	5,433	288	183	128	335	76	128	117	226	235	1,051	1,182	289	597	404	130	64
Marks Tey	2,566	144	77	62	170	38	63	56	136	158	577	631	119	190	105	33	7
Mile End	6,215	453	208	139	336	55	103	92	335	574	1,688	1,127	271	434	309	65	26
New Town	8,625	573	317	190	343	63	189	328	1,140	1,160	2,176	1,099	229	403	302	80	33
Prettygate	7,730	357	280	207	585	129	219	165	291	278	1,513	1,631	423	917	584	108	43
Pyefleet	2,435	121	75	68	138	25	51	52	79	86	488	674	143	221	141	47	26
Shrub End	10,528	1,068	532	357	728	114	219	297	909	1,140	2,678	1,179	277	466	425	100	39
St Andrew's	9,362	687	394	244	655	112	272	403	1,250	650	1,762	1,558	435	522	307	64	47
St Anne's	8,761	559	349	246	631	116	242	210	607	581	1,942	1,716	373	576	445	111	57
St John's	5,194	235	168	109	328	76	132	107	250	252	945	1,266	330	539	334	91	32
Stanway	7,553	393	268	192	495	114	196	154	388	510	1,670	1,556	372	675	429	97	44
Tiptree	7,516	384	244	189	519	81	203	155	355	334	1,523	1,842	437	707	393	106	44
West Bergholt & Eight Ash Green	5,044	285	183	149	322	60	125	111	228	248	1,092	1,148	296	438	267	61	31
West Mersea	6,925	331	191	147	363	70	156	106	265	245	1,229	1,533	434	934	709	145	67
Wivenhoe Cross	4,146	116	80	63	154	23	52	598	1,086	437	623	441	111	190	137	28	7
Wivenhoe Quay	4,989	237	175	109	303	63	112	114	366	235	1,045	1,202	262	383	299	60	24
<b>Colchester</b>	<b>155,796</b>	<b>9,455</b>	<b>5,771</b>	<b>4,062</b>	<b>9,812</b>	<b>1,825</b>	<b>3,760</b>	<b>4,202</b>	<b>11,050</b>	<b>11,022</b>	<b>34,581</b>	<b>30,161</b>	<b>7,145</b>	<b>11,850</b>	<b>8,101</b>	<b>2,046</b>	<b>953</b>
<b>Essex</b>	<b>1,310,835</b>	<b>77,237</b>	<b>49,324</b>	<b>34,082</b>	<b>85,179</b>	<b>15,962</b>	<b>31,963</b>	<b>27,837</b>	<b>69,620</b>	<b>78,854</b>	<b>290,043</b>	<b>265,127</b>	<b>66,768</b>	<b>115,345</b>	<b>77,023</b>	<b>17,982</b>	<b>8,489</b>

Source: Table KS02, 2001 Census, ONS. © Crown Copyright, 2002.  
Notes: 'Age' is at last birthday.

# Glossary

This document includes the definitions of terms used within this chapter of Colchester Counts. These definitions are provided by the Office for National Statistics and are used in conjunction with the 2001 Census.

Definitions are listed in alphabetical order and will be updated with further releases of data.

For more detailed information log on to the National Statistics website:

[www.statistics.gov.uk](http://www.statistics.gov.uk)

---

## Age

Age is derived from the date of birth question in the 2001 Census and is the age at a person's last birthday.

## Conceptions

Figures are derived by combining registration records for both live births and stillbirths with records of legal terminations under the 1967 Abortion Act. Pregnancies leading to spontaneous abortions (i.e. miscarriages) are not included.

## Crude Death Rate

Calculated as the number of deaths, per 1,000 resident population.

## Deaths

Figures for deaths relate to the number occurring in the calendar year 2001. A death is normally assigned to the area of usual residence of the deceased.

## Infant Mortality Rate

Calculated as the number of deaths less than one year, per 1,000 live births.

## Births

Births are assigned to areas according to the usual residence of the mother at the date of the birth, as stated at registration.

## Live Birth Rate

Calculated as the number of live births, per 1,000 resident population.

## Low Birth Weight (*Proportion*)

Number born with a birthweight less than 2,500 grams as a percentage of all live births for which the birth weight is known.

## Perinatal Mortality Rate

Calculated as the number of stillbirths, plus the number of deaths less than one week, per 1,000 live births and stillbirths.

## Population Density

Number of residents per square kilometre.

## Population Estimates

Estimates in this document are based on the 2001 Census of Population and include allowance for a small amount of population change due to births, deaths and net migration between Census Day and mid-2001.

## Resident Population

The 2001 Census has been conducted on a resident basis. This means the statistics relate to where people usually live, as opposed to where they are on Census night. Students and schoolchildren studying away from the family home are counted as resident at their term-time address. Residents away from home on Census night were required to be included on the Census form at their usual/resident address. Wholly absent households were legally required to complete a Census form on their return.

## Standardised Mortality Ratio (SMR)

Indicates how the mortality of a given area compares with the national level, after allowing for differences in age structure. Calculated as (observed deaths/expected deaths) x 100.

## Still Births

The definition of a stillbirth was changed on 1 October 1992 to the following:

*A child which has issued forth from its mother after the twenty-fourth week of pregnancy and which did not at any time after being completely expelled from the mother breathe or show any signs of life.*

Before 1 October 1992 the definition was similar except that it related to babies born dead after the twenty-eighth week of pregnancy.

## **Still Birth Rate**

Calculated as the number of stillbirths per 1,000 live births and stillbirths.

## **Total Fertility Rate (TFR)**

Represents the average number of children, which a woman would bear, if the current age-specific fertility persisted throughout her childbearing years.

---