



Colchester Borough Council

# **The English Indices of Deprivation 2015**

*An analysis of relative deprivation in small areas within the borough of Colchester*

# Contents

---

<b>About</b> .....	2
<b>Regional Context</b> .....	3
Essex District rankings on IMD 2015 summary measures .....	4
<b>Deprivation in Colchester</b> .....	5
Most Deprived Areas in Colchester.....	6
Least deprived areas in Colchester.....	7
Changes in deprivation since 2010 .....	8
<b>Income deprivation in Colchester</b> .....	9
Income deprivation domain by LSOA.....	10
Changes in income deprivation since 2010.....	11
<b>Employment deprivation in Colchester</b> .....	12
Employment deprivation domain by LSOA.....	13
Changes in employment deprivation since 2010.....	14
<b>Education, skills &amp; training deprivation in Colchester</b> .....	15
Education, skills & training deprivation domain by LSOA .....	16
Changes in education, skills and training deprivation since 2010.....	17
<b>Health deprivation &amp; disability in Colchester</b> .....	18
Health deprivation & disability domain by LSOA .....	19
Changes in health deprivation & disability since 2010.....	20
<b>Crime deprivation in Colchester</b> .....	21
Crime deprivation domain by LSOA.....	22
Changes in crime deprivation since 2010 .....	23
<b>Barriers to housing &amp; services in Colchester</b> .....	24
Barriers to housing & services domain by LSOA.....	25
Changes in barriers to housing and services deprivation since 2010 .....	26
<b>Living environment in Colchester</b> .....	27
Living environment domain by LSOA.....	28
Changes in living environment deprivation since 2010.....	29

# About

---

The English Indices of Deprivation 2015 use 38 separate indicators, organised across seven distinct 'domains' or types of deprivation which can be combined, using appropriate weights, to calculate the Index of Multiple Deprivation 2015 (IMD 2015). This report focuses on the seven distinct domains of deprivation. The Index of Multiple Deprivation itself is an overall measure of multiple deprivation experienced by people living in an area and is calculated for every Lower layer Super Output Area (referred to as LSOAs throughout this report) in England.

Lower-Layer Super Output Areas (LSOAs) are small areas designed to be of a similar population size, with an average of approximately 1,500 residents or 650 households. They were produced by the Office for National Statistics for the reporting of small area statistics.

There are 105 LSOAs in the borough and 32,844 in England. LSOAs have an average population of 1500 people and 'fit' into the existing ward boundaries. Each of our wards has between one and six LSOAs. The IMD 2015 can be used to rank every small area in England according to their relative level of deprivation.

The English Indices of Deprivation are a continuous measure of relative deprivation therefore there is no definitive point on the scale below which areas are considered to be deprived and above which they are not. In most cases, users concentrate on defining deprived areas by using a cut-off value beyond which areas are deemed to be the most deprived. For instance, a number of uses of the Index of Multiple Deprivation have focussed on the most deprived 10 per cent (most deprived decile) of LSOAs in England.

For the purpose of calculation, LSOAs are ranked such that the most deprived LSOA is given the rank of 1.

The last English Indices of Deprivation was released in March 2011, and relates to data as of 2010. A report into the findings of this report is [found on our website](#). Throughout this report, comparisons are made between the 2015 data release, and the 2010 report.

## 2015 Report

The Indices of Deprivation 2015 were originally published by the Department for Communities and Local Government in September 2015.

### Queries / Comments

This report was produced by the Research and Engagement Team at Colchester Borough Council. If you have any comments or queries, please do not hesitate to contact:

[research@colchester.gov.uk](mailto:research@colchester.gov.uk)

### Disclaimer

The information in this report was, as far as is known, correct at the date of publication. Colchester Borough Council cannot accept responsibility for any error or omission.

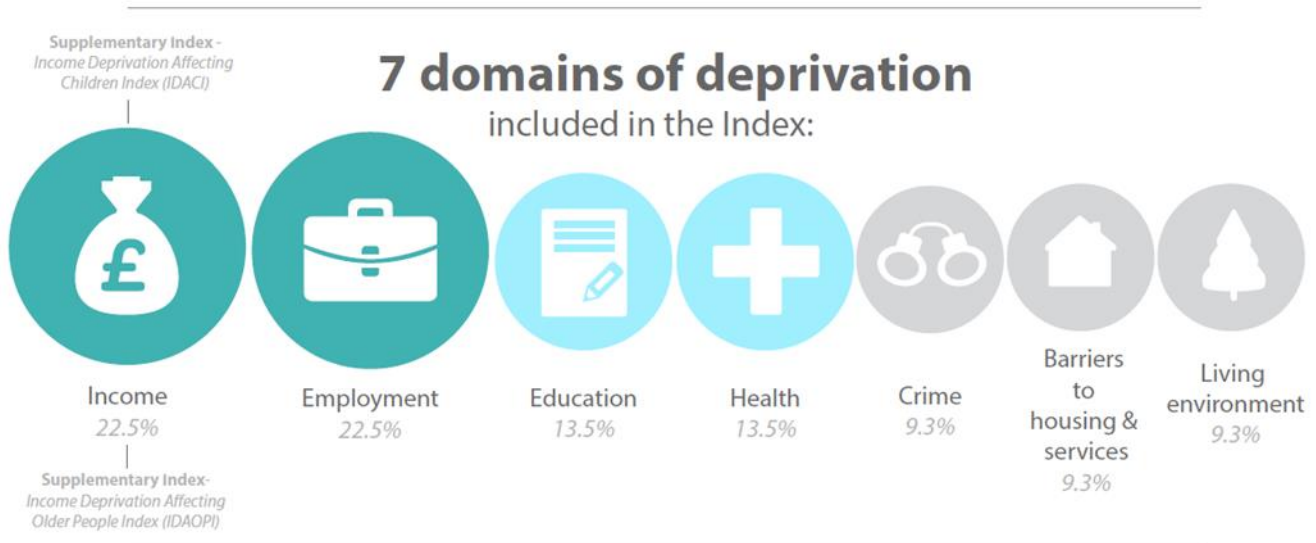
### Notes

The IMD 2015 is a relative measure of deprivation and therefore it **cannot** be used to determine 'how much' more deprived one LSOA is than another. For example, it is not possible to say that LSOA X,

ranked 20 is twice as deprived as LSOA Y, which is ranked 40. However, it is possible to say that X is more deprived than Y.

The IMD 2015 scores and ranks **cannot** be used as absolute measures of deprivation or to identify absolute change over time, because an area’s score is affected by the scores of every other area.

The IMD is created from the seven domain scores. The scores are first standardised to the same scale and transformed to a common distribution - the exponential distribution. They are then combined using weights chosen to reflect the relative importance of each domain to multiple deprivation, according to available research evidence – as shown below:



Source:

[https://www.gov.uk/government/uploads/system/uploads/attachment\\_data/file/464431/English\\_Index\\_of\\_Multiple\\_Deprivation\\_2015\\_-\\_Infographic.pdf](https://www.gov.uk/government/uploads/system/uploads/attachment_data/file/464431/English_Index_of_Multiple_Deprivation_2015_-_Infographic.pdf)

# Regional Context

The table below shows how the borough of Colchester compares with other districts in Essex County. This provides a quick insight into how levels of deprivation compare across the county.

Each authority is ranked out of 326 nationally in the following categories:

- **Average Score** and **Average Rank** measure how the average level of deprivation in each authority compares nationally
- **Extent** refers to the proportion of the district’s population living in the most deprived LSOAs
- **Local Concentration** highlights the severity of multiple deprivation in each district, measuring hotspots of deprivation

The table below shows how each authority ranks out of 326 for each of the above categories. Higher rankings indicate higher levels of deprivation. The arrows in the table show how each authority has changed in comparison to other Essex districts since the 2010 English Indices of Deprivation for each category.

## Essex District rankings on IMD 2015 summary measures

(National rank out of 326)

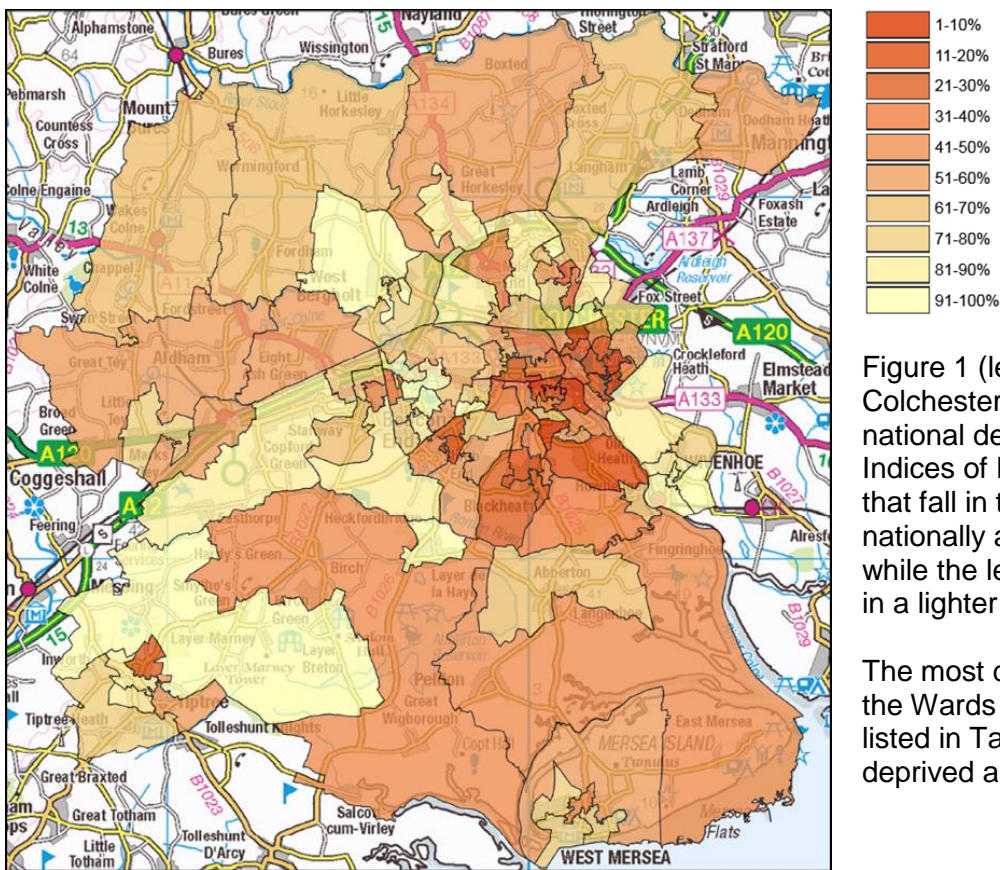
Rank	Average score			Average rank			Extent		Local Concentration			
1	Tendring	50	=	Tendring	49	▲	Tendring	70	▲	Tendring	40	=
2	Basildon	98	▲	Harlow	71	▼	Basildon	81	▼	Basildon	83	=
3	Harlow	101	▼	Basildon	113	=	Harlow	148	=	<b>Colchester</b>	<b>161</b>	▲
4	<b>Colchester</b>	<b>182</b>	▲	<b>Colchester</b>	<b>185</b>	▲	<b>Colchester</b>	<b>167</b>	=	Castle Point	170	▲
5	Castle Point	187	▼	Castle Point	187	▼	Castle Point	185	=	Harlow	176	▼
6	Braintree	202	▲	Braintree	197	▲	Chelmsford	217	▲	Chelmsford	211	▲
7	Epping Forest	205	▼	Epping Forest	199	▼	Braintree	229	=	Braintree	229	=
8	Maldon	216	=	Maldon	204	=	Epping Forest	231	▼	Epping Forest	231	▼
9	Chelmsford	256	▲	Chelmsford	261	▲	Maldon	249	▲	Maldon	239	=
10	Rochford	281	▲	Rochford	285	▲	Rochford	251	▼	Rochford	254	▲
11	Brentwood	297	▼	Brentwood	294	▼	Brentwood	299	▼	Brentwood	283	▼
12	Uttlesford	300	=	Uttlesford	297	=	Uttlesford	302	=	Uttlesford	321	=

Colchester ranks 4<sup>th</sup> in comparison to other Essex authorities in the average score, rank and extent measures, and 3<sup>rd</sup> in Essex County in the local concentration measure.

# Deprivation in Colchester

This map shows a combined measure for deprivation, which takes into account all seven domains of deprivation using the following weights:

- Income Deprivation (22.5%)
- Employment Deprivation (22.5%)
- Education, Skills and Training Deprivation (13.5%)
- Health Deprivation & Disability (13.5%)
- Crime Deprivation (9.3%)
- Barriers to Housing & Services Deprivation (9.3%)
- Living Environment Deprivation (9.3%)



© Crown copyright and database rights 2015 Ordnance Survey 100023706.  
**Figure 1: Map of Colchester Borough LSOAs by Overall deprivation decile**

Figure 1 (left) shows all LSOAs in Colchester ranked by their position in the national decile rankings for the combined Indices of Deprivation measure. LSOAs that fall in the top 10% of deprived areas nationally are represented in dark red, while the least deprived are represented in a lighter yellow colour.

The most deprived LSOAs, along with the Wards in which they are situated, are listed in Table 1 (page 6). The least deprived are listed in Table 2 (page 7)

## Summary:

Colchester has 32 LSOAs that fall into the top 40% of most deprived LSOAs in the county. These LSOAs are largely concentrated in the wards of **Berechurch, St Andrew's, New Town and St Anne's**. Colchester has 4 LSOAs in the 10% most deprived in the country, found in the wards of **St Andrew's, St Anne's and Harbour**. A full breakdown is provided in table 1 (page 6).



## Most Deprived Areas in Colchester

The table below shows the LSOAs in Colchester borough that fall into the most deprived 40% in England.

Deprivation Decile	LSOA Name	Ward	Rank	IMD Score
1-10%	Magnolia	St Andrew's	1912	51.829
	Barnhall	Harbour	3131	45.282
	Salary Brook South	St Andrew's	3133	45.276
	St.Annes Estate	St Anne's	3198	44.946
11-20%	New Town North	New Town	4024	41.624
	Forest	St Andrew's	4519	39.954
	Paxmans	New Town	5015	38.366
	Iceni Square	Shrub End	5603	36.508
	Sycamore	St Andrew's	5955	35.501
	Monkwick	Berechurch	5983	35.433
	Speedwell	Harbour	6449	34.203
21-30%	Castle Central	Castle	6869	33.124
	Eastern Approaches North	St Andrew's	7340	31.957
	Rayner Road	Shrub End	7464	31.631
	Friday wood	Berechurch	9219	27.911
	Harwich Road	St Anne's	9230	27.894
	Blackheath	Berechurch	9322	27.748
	Chinook	Highwoods	9364	27.676
	Wimpole Central	New Town	9619	27.184
	Maypole	Tiptree	9671	27.091
31-40%	Butt Road	Christ Church	10096	26.338
	The Willows	Berechurch	10380	25.844
	Salary Brook North	St Andrew's	11100	24.56
	Parsons Heath	St Anne's	11349	24.148
	Berechurch North	Berechurch	11609	23.718
	Castle East	Castle	11720	23.545
	Donyland Woods	East Donyland	11921	23.189
	Collingwood	Lexden	12164	22.845
	East Ward	St Anne's	12502	22.34
	Australian Estate	Berechurch	13004	21.593
	Winchester Road	New Town	13042	21.542
	Highwoods East	Highwoods	13078	21.509

Table 1: Most deprived LSOAs in Colchester

The most deprived LSOA in Colchester is Magnolia in the ward of St Andrews, which is ranked as the 1,912<sup>th</sup> most deprived in England (out of 32,844 LSOAs nationally). Barnhall LSOA in Harbour ward, Salary Brook South in St Andrew's and St Anne's Estate in St Anne's also fall into the 10% most deprived in England.

Berechurch and St Andrews have the highest number of LSOAs which fall into the top 40% most deprived in England, with 6 LSOAs each.

Please find these 32 LSOAs mapped separately in Figure 2 (page 7).

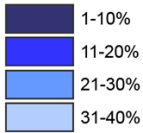
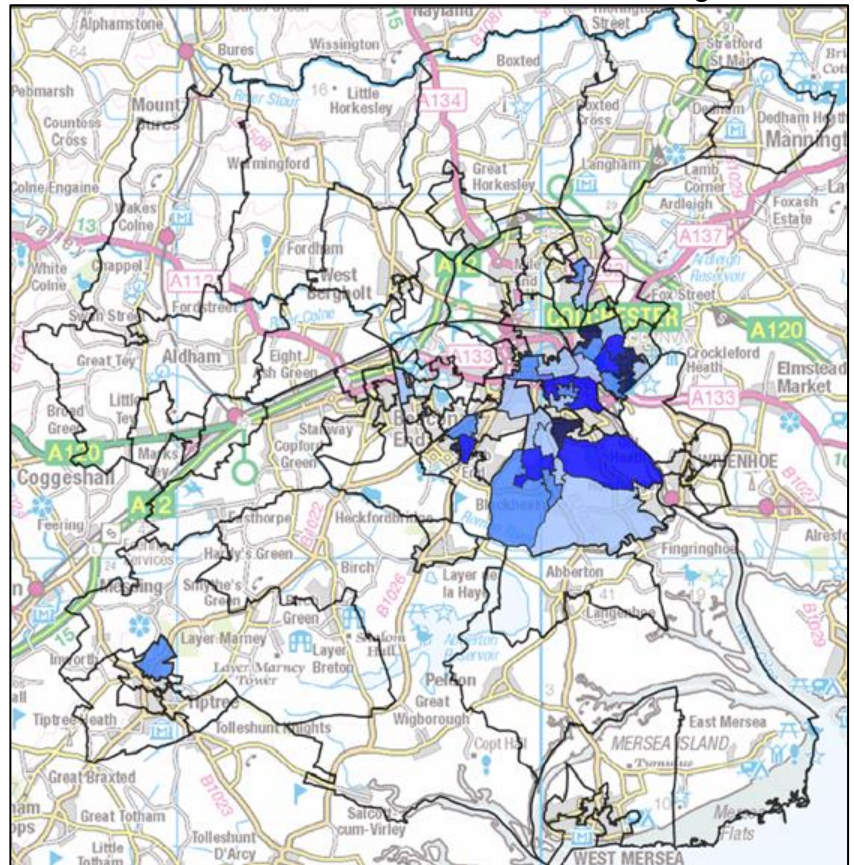


Figure 2 (right) shows all 32 LSOAs in Colchester that fall into the top 40% most deprived nationally. LSOAs that fall in the top 10% of deprived areas nationally are represented in dark blue, while the less deprived LSOAs are represented in a lighter blue colour.



© Crown copyright and database rights 2015 Ordnance Survey 100023706.  
**Figure 2: Map of most deprived Colchester Borough LSOAs by Overall deprivation decile**

### Least deprived areas in Colchester

Deprivation Decile	LSOA Name	Ward	Rank	IMD Score
81-90%	Cuckoo Farm	Mile End	26409	8.266
	Anchor Road	Tiptree	26420	8.256
	Braiswick	Mile End	27133	7.698
	Vine Road	Tiptree	27344	7.512
	The Saints	St John's	27366	7.492
	Horkesley Heath	Fordham and Stour	27395	7.479
	Stanway Hall	Stanway	27479	7.411
	London Road	Lexden	27653	7.272
	Copford and West	Copford and West Stanway	27856	7.107
	Birchwood	St John's	27996	6.982
	Baden Powell	Prettygate	28163	6.851
	Vanessa Drive	Wivenhoe Quay	28396	6.672
	Wivenhoe Park	Wivenhoe Cross	28544	6.54
	91-100%	Prettygate Centre	Prettygate	29668
Messing & Marney		Birch and Winstree	29979	5.31
Wivenhoe Central		Wivenhoe Quay	30331	4.964
Church Lane		Lexden	30795	4.5
Gavin Way East		Highwoods	31099	4.19
Drury		Christ Church	31105	4.181
Layer		Birch and Winstree	32209	2.847
Rectory		Wivenhoe Quay	32223	2.822
Bergholt		West Bergholt and Eight Ash Green	32371	2.56

Table 2: Least deprived LSOAs in Colchester



Table 2 (page 7) shows the least deprived LSOAs in Colchester by the combined measure of deprivation. Colchester has 22 LSOAs that fall in to the 20% least deprived in England.

The LSOA ranked as the least deprived is Bergholt, in the ward of West Bergholt and Eight Ash Green. Wivenhoe Quay has 3 LSOAs which fall into the 20% least deprived classification, the most of any one ward in Colchester.

## **Changes in deprivation since 2010**

In the 2010 Indices of Deprivation, Colchester had 2 LSOAs in the 10% most deprived nationally. These included Magnolia and St Anne's Estate. Since then, the number of LSOAs in the 10% most deprived has doubled to 4, with Barnhall and Salary Brook South moving up from the 11-20% most deprived decile. Colchester had no LSOAs in the most deprived 10% in 2007.

The most deprived LSOA in Colchester is Magnolia. This has not changed since 2010.

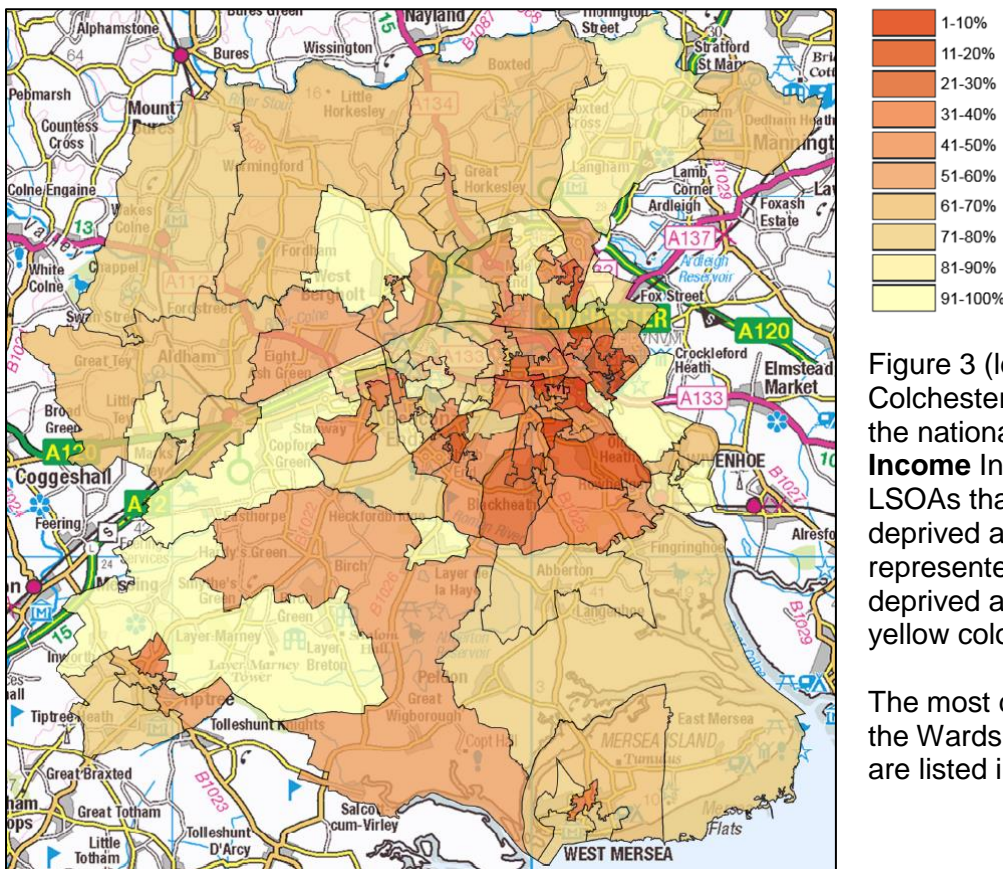
In 2010, Colchester had 22 LSOAs in the top 40% most deprived in England. This has since increased by 10.

In the least deprived LSOAs, Bergholt retains its status as the least deprived LSOA in Colchester from the 2010 Indices of Deprivation. In 2010, Colchester had 27 LSOAs which fell into the 20% least deprived in England. This has now fallen by 5 to 22 LSOAs.

# Income deprivation in Colchester

This domain measures the proportion of the population experiencing deprivation relating to low income. The definition of low income for this measure includes people out of work and those in work but who have low earnings.

All LSOAs nationally are ranked from most to least deprived, and are then divided into 10 equal groups, or deciles. The analysis of income deprivation in this report shows which Colchester LSOAs fall into which of these deciles, with the 1-10% decile representing the most deprived LSOAs in the country, and 91-100% the least.



© Crown copyright and database rights 2015 Ordnance Survey 100023706.

**Figure 3: Map of Colchester Borough LSOAs by income deprivation decile**

Figure 3 (left) shows all LSOAs in Colchester ranked by their position in the national decile rankings for the **Income** Indices of Deprivation measure. LSOAs that fall in the top 10% of deprived areas nationally are represented in dark red, while the least deprived are represented in a lighter yellow colour.

The most deprived LSOAs, along with the Wards in which they are situated, are listed in Table 3 (page 10).

## Summary:

Colchester has 31 LSOAs that fall into the top 40% of most deprived LSOAs in the county for this domain. These LSOAs are concentrated in the wards of **St Andrew's, Berechurch, New Town and St Anne's**. Colchester has 4 LSOAs in the 10% most deprived in the country, found in the wards of **St Andrew's, St Anne's and Harbour**. A full breakdown is provided in table 3 (page 10).

## Income deprivation domain by LSOA

The table below shows the LSOAs in Colchester borough that fall into the most deprived 40% by the income deprivation domain in England.

Deprivation Decile	LSOA Name	Ward	Income Rank (where 1 is most deprived)
1-10%	St.Annes Estate	St Anne's	2566
	Magnolia	St Andrew's	2618
	Barnhall	Harbour	2930
	Salary Brook South	St Andrew's	2971
11-20%	Paxmans	New Town	3348
	Iceni Square	Shrub End	5012
	Speedwell	Harbour	5118
	Monkwick	Berechurch	5347
	Forest	St Andrew's	6093
	New Town North	New Town	6113
	Sycamore	St Andrew's	6188
	Chinook	Highwoods	6561
21-30%	Castle Central	Castle	8088
	Highwoods East	Highwoods	8195
	Rayner Road	Shrub End	8201
	Eastern Approaches North	St Andrew's	8391
	Friday Wood	Berechurch	8746
31-40%	Butt Road	Christ Church	9959
	Collingwood	Lexden	10010
	Maypole	Tiptree	10025
	Salary Brook North	St Andrew's	10137
	Harwich Road	St Anne's	10140
	Wheatfield Road	Stanway	10175
	Berechurch North	Berechurch	10529
	Donyland Woods	East Donyland	10876
	Parsons Heath	St Anne's	11113
	West Mersea Centre	West Mersea	11394
	Australian Estate	Berechurch	11600
	Blackheath	Berechurch	11785
	Wimpole Central	New Town	12033
	Castle East	Castle	13111

Table 3: Most deprived LSOAs in Colchester by Income deprivation

The most deprived LSOA in Colchester by the income deprivation domain is St Anne's Estate in the ward of St Anne's, which is ranked as the 2,566<sup>th</sup> most deprived in England (out of 32,844 LSOAs nationally). Magnolia and Salary Brook South LSOAs in St Andrew's and Barnhall in Harbour also fall into the 10% most deprived in England by income deprivation. These are the same 4 LSOAs which fall into the 10% most deprived in England by the overall deprivation measure on page 6.

St Andrews has the highest number of LSOAs which fall into the top 40% most deprived in England by this measure, with 6 LSOAs, while Berechurch is second with 5.

Please find these 31 LSOAs mapped separately in Figure 4 (page 11).



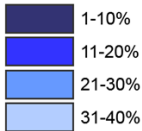
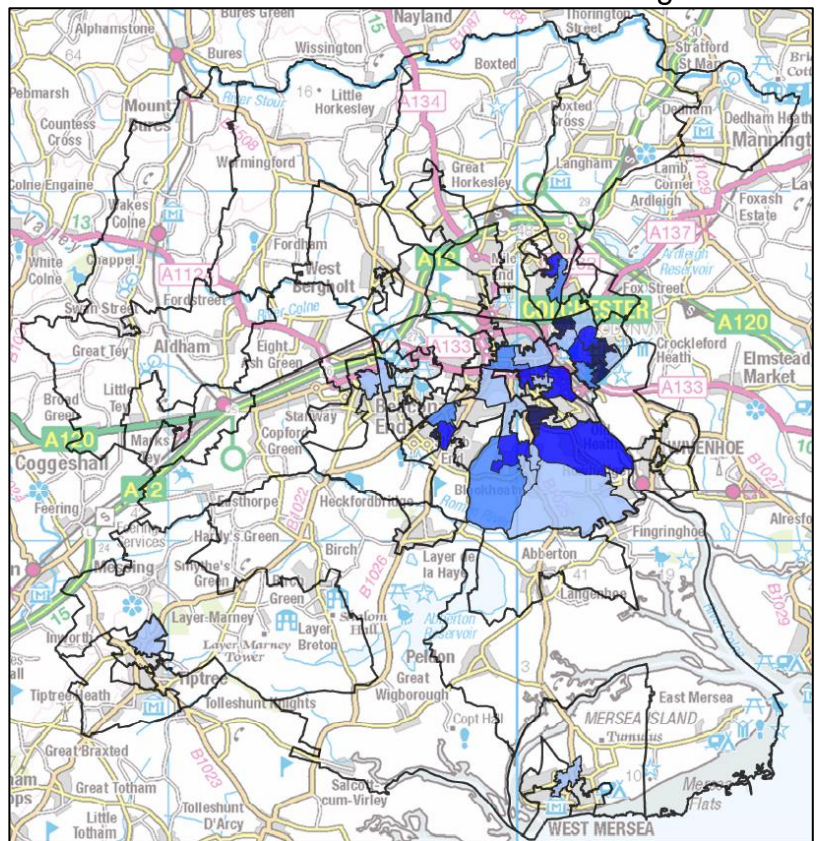


Figure 4 (right) shows all 31 LSOAs in Colchester that fall into the top 40% most deprived by the income deprivation domain nationally. LSOAs that fall in the top 10% of deprived areas nationally are represented in dark blue, while the less deprived LSOAs are represented in a lighter blue colour.



© Crown copyright and database rights 2015 Ordnance Survey 100023706.

**Figure 4: Map of most deprived Colchester Borough LSOAs by income deprivation**

## Changes in income deprivation since 2010

In the 2010 Indices of Deprivation, Colchester had 1 LSOA in the 10% most deprived by income deprivation nationally, which was St Anne's Estate. Since then, the number of LSOAs in the 10% most deprived has increased to 4, with Magnolia, Barnhall and Salary Brook South moving up from the 11-20% most deprived decile. Colchester has no LSOAs in the most deprived 10% in 2007.

The most deprived LSOA in Colchester by income deprivation is still St Anne's Estate. This has not changed since 2010.

In 2010, Colchester had 28 LSOAs in the top 40% most deprived by income deprivation in England. This has since increased by 4.

# Employment deprivation in Colchester

The Employment deprivation domain refers to the proportion of the working age population in an area who are involuntarily excluded from the labour market. This includes people who would like to work but are unable to do so due to unemployment, sickness or disability, or caring responsibilities.

All LSOAs nationally are ranked from most to least deprived, and are then divided into 10 equal groups, or deciles. The analysis of employment deprivation in this report shows which Colchester LSOAs fall into which of these deciles, with the 1-10% decile representing the most deprived LSOAs in the country, and 91-100% the least.

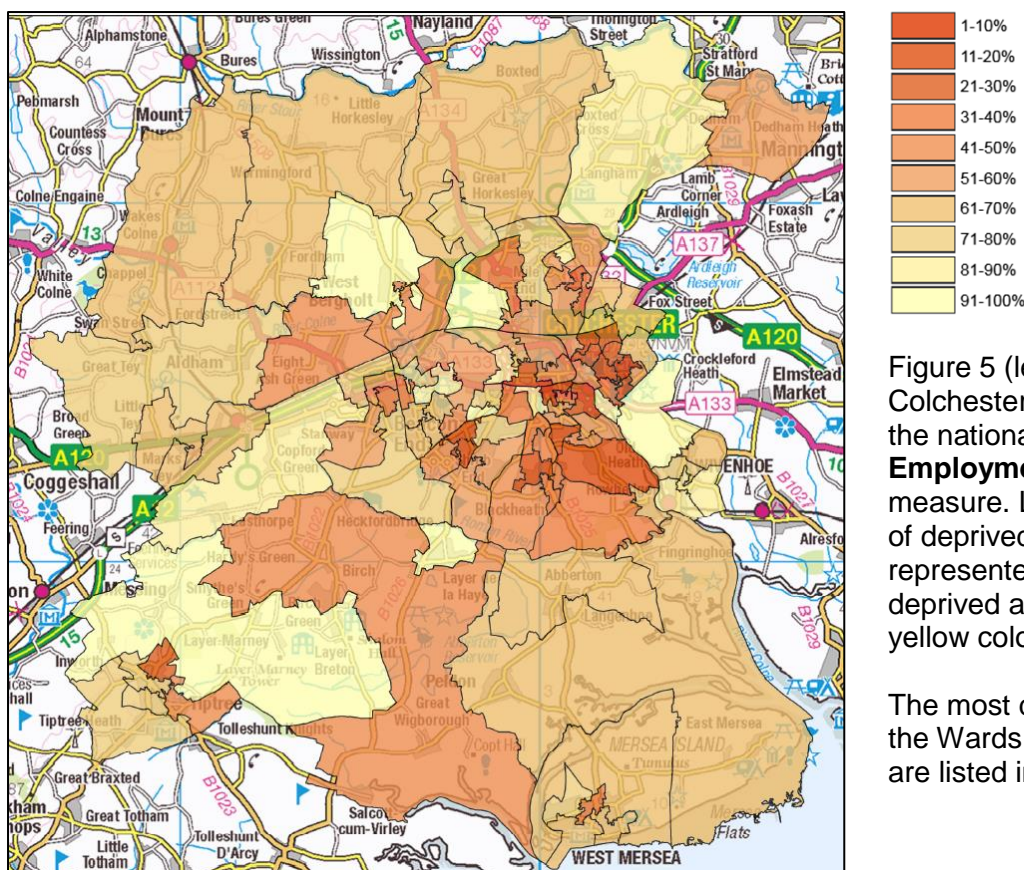


Figure 5 (left) shows all LSOAs in Colchester ranked by their position in the national decile rankings for the **Employment** Indices of Deprivation measure. LSOAs that fall in the top 10% of deprived areas nationally are represented in dark red, while the least deprived are represented in a lighter yellow colour.

The most deprived LSOAs, along with the Wards in which they are situated, are listed in Table 4 (page 13).

© Crown copyright and database rights 2015 Ordnance Survey 100023706.  
**Figure 5: Map of Colchester Borough LSOAs by employment deprivation decile**

### Summary:

Colchester has 30 LSOAs that fall into the top 40% of most deprived LSOAs in the county for this domain. These LSOAs are concentrated in the wards of **Berechurch, St Andrew's, New Town** and **St Anne's**. Colchester has one LSOA in the 10% most deprived in the country, found in the ward of **St Andrew's**. A full breakdown is provided in table 4 (page 13).



## Employment deprivation domain by LSOA

The table below shows the LSOAs in Colchester borough that fall into the most deprived 40% by the employment deprivation domain in England.

Employment Decile (where 1 is most deprived 10% of LSOAs)	LSOA Name	Ward	Employment Rank (where 1 is most deprived)
1-10%	Magnolia	St Andrew's	1980
11-20%	Barnhall	Harbour	3298
	St.Annes Estate	St Anne's	3679
	Rayner Road	Shrub End	4553
	New Town North	New Town	4985
	Forest	St Andrew's	5046
	Salary Brook South	St Andrew's	5071
	Iceni Square	Shrub End	5227
	Speedwell	Harbour	5522
21-30%	Monkwick	Berechurch	5799
	Sycamore	St Andrew's	7207
	Chinook	Highwoods	8002
	Maypole	Tiptree	8253
	Parsons Heath	St Anne's	8532
	Castle Central	Castle	8633
	Paxmans	New Town	9056
Harwich Road	St Anne's	9651	
31-40%	Blackheath	Berechurch	9883
	West Mersea Centre	West Mersea	10103
	The Willows	Berechurch	10472
	Collingwood	Lexden	10551
	Wheatfield Road	Stanway	10794
	Highwoods East	Highwoods	11109
	Australian Estate	Berechurch	11486
	Defoe	Mile End	11668
	Berechurch North	Berechurch	12184
	Butt Road	Christ Church	12222
	Donyland Woods	East Donyland	12614
	Wimpole Central	New Town	12828
	Eastern Approaches North	St Andrew's	13045

Table 4: Most deprived LSOAs in Colchester by employment deprivation

The most deprived LSOA in Colchester by the employment deprivation domain is Magnolia in the ward of St Andrew's, which is ranked as the 1,980<sup>th</sup> most deprived in England by this measure (out of 32,844 LSOAs nationally).

Berechurch and St Andrews have the highest number of LSOAs which fall into the top 40% most deprived in England by this measure, with 5 LSOAs each.

Please find these 30 LSOAs mapped separately in Figure 6 (page 14).

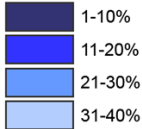
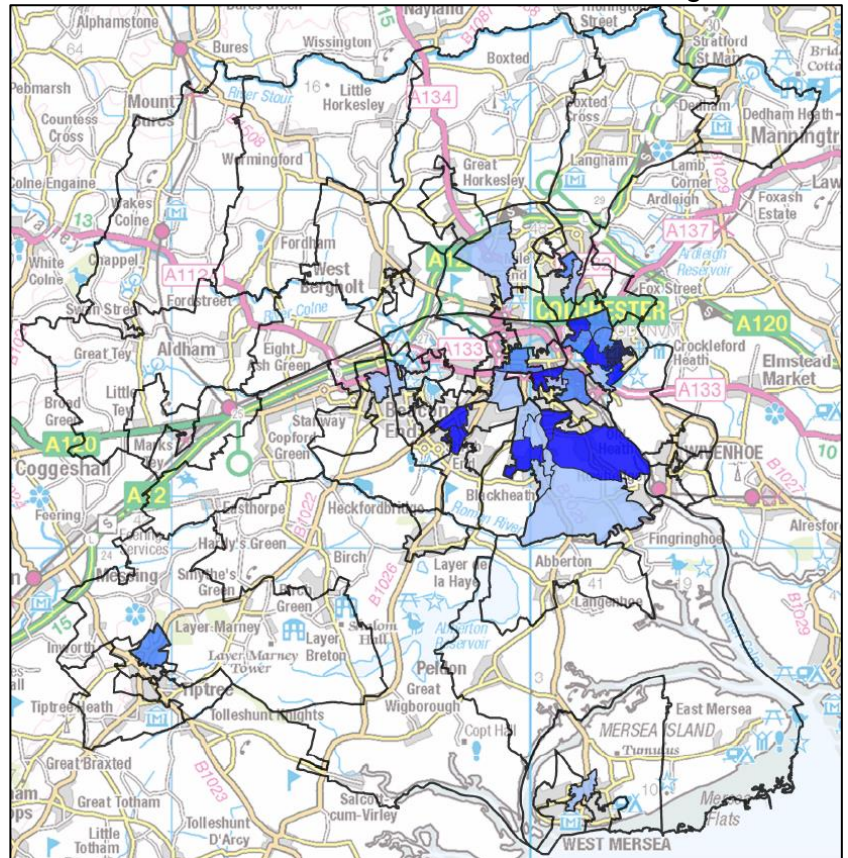


Figure 6 (right) shows all 30 LSOAs in Colchester that fall into the top 40% most deprived by the employment deprivation domain nationally. LSOAs that fall in the top 10% of deprived areas nationally are represented in dark blue, while the less deprived LSOAs are represented in a lighter blue colour.



© Crown copyright and database rights 2015 Ordnance Survey 100023706.

Figure 6: Map of most deprived Colchester Borough LSOAs by employment deprivation

## Changes in employment deprivation since 2010

In the 2010 Indices of Deprivation, Colchester had 1 LSOAs in the 10% most deprived by employment deprivation nationally, which was Magnolia. This remains unchanged.

In 2010, Colchester had 27 LSOAs in the top 40% most deprived by employment deprivation in England. This has since increased by 3.

# Education, skills & training deprivation in Colchester

The education, skills and training deprivation domain measures the lack of attainment and skills in the local population. The indicators falls into two sub-domains: one relating to children and young people and one relating to adult skills.

All LSOAs nationally are ranked from most to least deprived, and are then divided into 10 equal groups, or deciles. The analysis of education, skills and training deprivation in this report shows which Colchester LSOAs fall into which of these deciles, with the 1-10% decile representing the most deprived LSOAs in the country, and 91-100% the least.

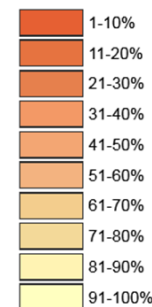
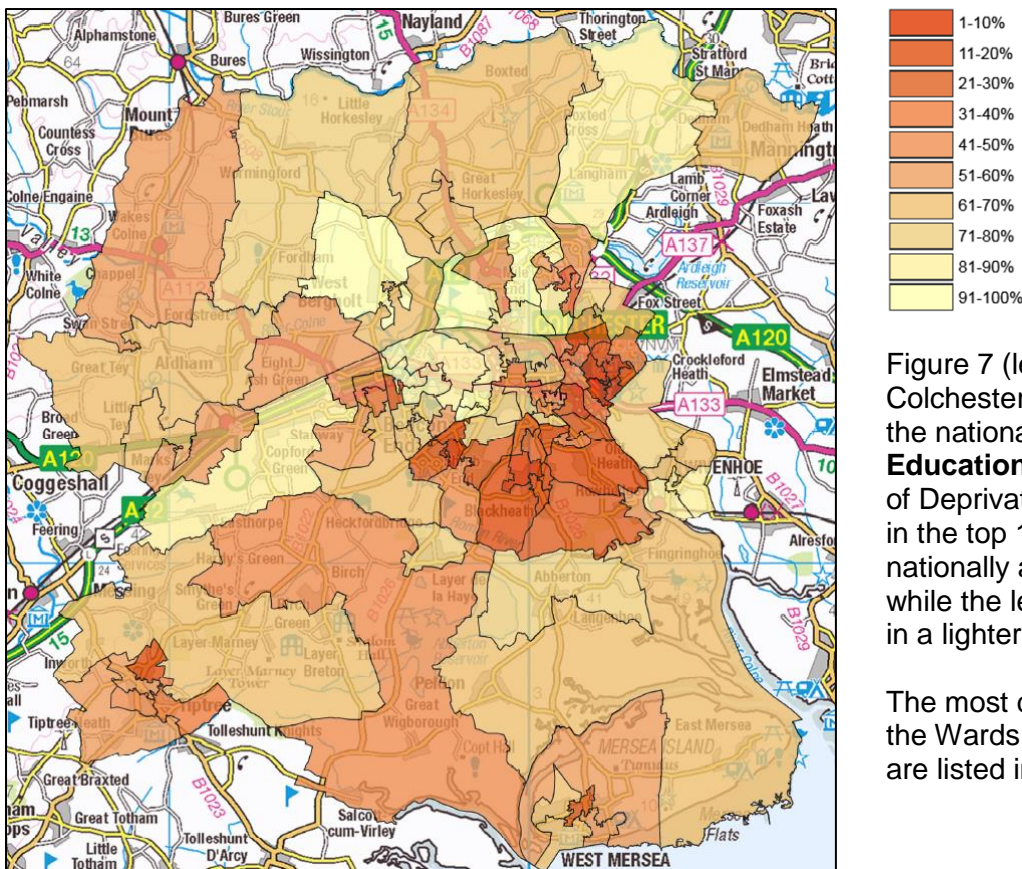


Figure 7 (left) shows all LSOAs in Colchester ranked by their position in the national decile rankings for the **Education, skills and training** Indices of Deprivation measure. LSOAs that fall in the top 10% of deprived areas nationally are represented in dark red, while the least deprived are represented in a lighter yellow colour.

The most deprived LSOAs, along with the Wards in which they are situated, are listed in Table 5 (page 16).

© Crown copyright and database rights 2015 Ordnance Survey 100023706.  
**Figure 7: Map of Colchester Borough LSOAs by education, skills & training deprivation**

## Summary:

Colchester has 35 LSOAs that fall into the top 40% of most deprived LSOAs in the county for this domain. These LSOAs are concentrated in the wards of **St Andrew's, Berechurch, Harbour, Shrub End and St Anne's**. Colchester has 7 LSOAs in the 10% most deprived in the country, found in the wards of **St Andrew's, St Anne's, Shrub End and Berechurch**. A full breakdown is provided in table 5 (page 16).



## Education, skills & training deprivation domain by LSOA

The table below shows the LSOAs in Colchester borough that fall into the most deprived 40% by the education, skills and training deprivation domain in England.

Deprivation Decile	LSOA Name	Ward	Education, Skills and Training Rank (where 1 is most deprived)
1-10%	Salary Brook South	St Andrew's	666
	Magnolia	St Andrew's	1193
	St.Annes Estate	St Anne's	1602
	Forest	St Andrew's	1655
	Eastern Approaches North	St Andrew's	2051
	Iceni Square	Shrub End	2509
	Monkwick	Berechurch	3182
11-20%	Sycamore	St Andrew's	3320
	Salary Brook North	St Andrew's	4439
	Maypole	Tiptree	4515
	Barnhall	Harbour	4696
	Speedwell	Harbour	4808
	Friday wood	Berechurch	4881
	Parsons Heath	St Anne's	5116
	Blackheath	Berechurch	5688
	Rayner Road	Shrub End	6377
	Australian Estate	Berechurch	6473
	21-30%	Paxmans	New Town
West Mersea Centre		West Mersea	7397
Donyland Woods		East Donyland	8009
Chinook		Highwoods	8042
The willows		Berechurch	8099
Berechurch North		Berechurch	8136
Gosbecks		Shrub End	8164
Collingwood		Lexden	9236
Whitehall		Harbour	9661
Alamein Road & Homefield Road		Shrub End	9697
31-40%		Harwich Road	St Anne's
	Mountbatten	Harbour	11131
	Highwoods East	Highwoods	11710
	Castle Central	Castle	11815
	Wheatfield Road	Stanway	11994
	Eastern Approaches South	St Andrew's	12500
	Longridge	St Anne's	12648
	New Road	Tiptree	12762

Table 5: Most deprived LSOAs in Colchester by education, skills & training deprivation

The most deprived LSOA in Colchester by the education, skills and training deprivation domain is Salary Brook South in the ward of St Anne's, which is ranked as the 666<sup>th</sup> most deprived in England by this measure (out of 32,844 LSOAs nationally). Magnolia, Forest and Eastern Approaches North LSOAs in St Andrew's, St Anne's Estate in St Anne's, Iceni Square in Shrub End and Monkwick in Berechurch also fall into the 10% most deprived in England by this measure.

St Andrews has the highest number of LSOAs which fall into the top 40% most deprived in England by this measure, with 7 LSOAs, while Berechurch is second with 6.

Please find these 35 LSOAs mapped separately in Figure 8 below.

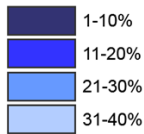
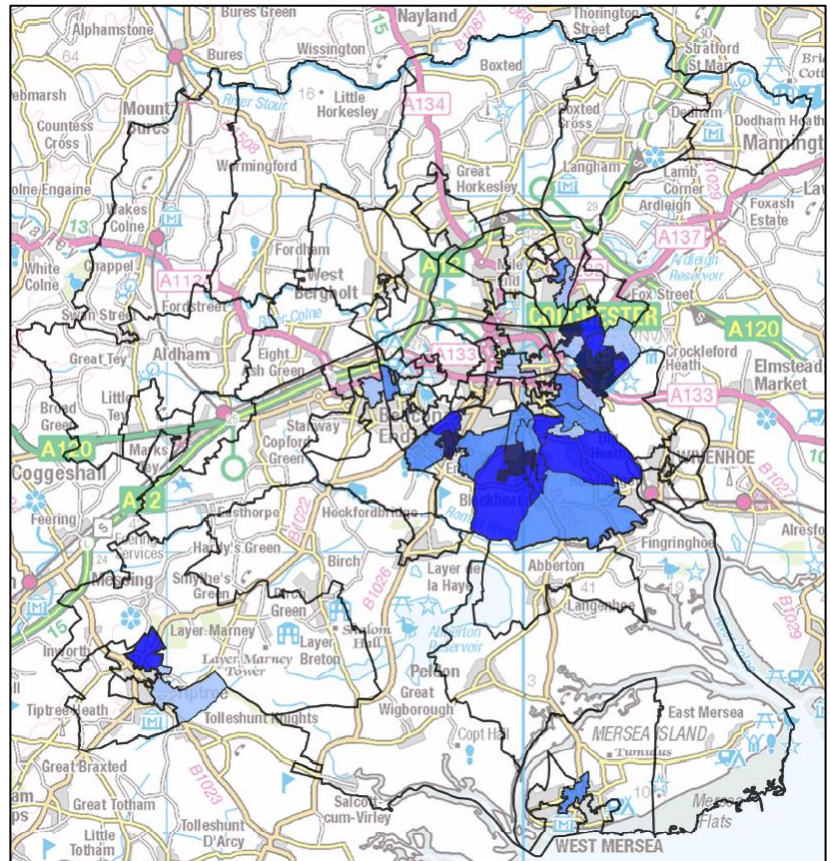


Figure 8 (right) shows all 35 LSOAs in Colchester that fall into the top 40% most deprived by the education, skills and training deprivation domain nationally. LSOAs that fall in the top 10% of deprived areas nationally are represented in dark blue, while the less deprived LSOAs are represented in a lighter blue colour.



© Crown copyright and database rights 2015 Ordnance Survey 100023706.

**Figure 8: Map of most deprived Colchester Borough LSOAs by education, skills & training deprivation**

## Changes in education, skills and training deprivation since 2010

In the 2010 Indices of Deprivation, Colchester had 5 LSOAs in the 10% most deprived by education, skills and training deprivation nationally, which were St Anne’s Estate, Magnolia, Salary Brook South, Forest and Icen Square. Since then, the number of LSOAs in the 10% most deprived has increased to 7, with Monkwick moving up from the 11-20% most deprived decile.

The most deprived LSOA in Colchester by education, skills and training deprivation is now Salary Brook South, when in 2010 it was St Annes Estate.

In 2010, Colchester had 34 LSOAs in the top 40% most deprived by education, skills and training deprivation in England. This has since increased by 1 LSOA.



# Health deprivation & disability in Colchester

The health deprivation and disability domain measure the risk of premature death and the impairment of quality of life through poor physical or mental health. The domain measures morbidity, disability and premature mortality but not aspects of behaviour or environment that may be predictive of future health deprivation.

All LSOAs nationally are ranked from most to least deprived, and are then divided into 10 equal groups, or deciles. The analysis of health deprivation and disability domain in this report shows which Colchester LSOAs fall into which of these deciles, with the 1-10% decile representing the most deprived LSOAs in the country, and 91-100% the least.

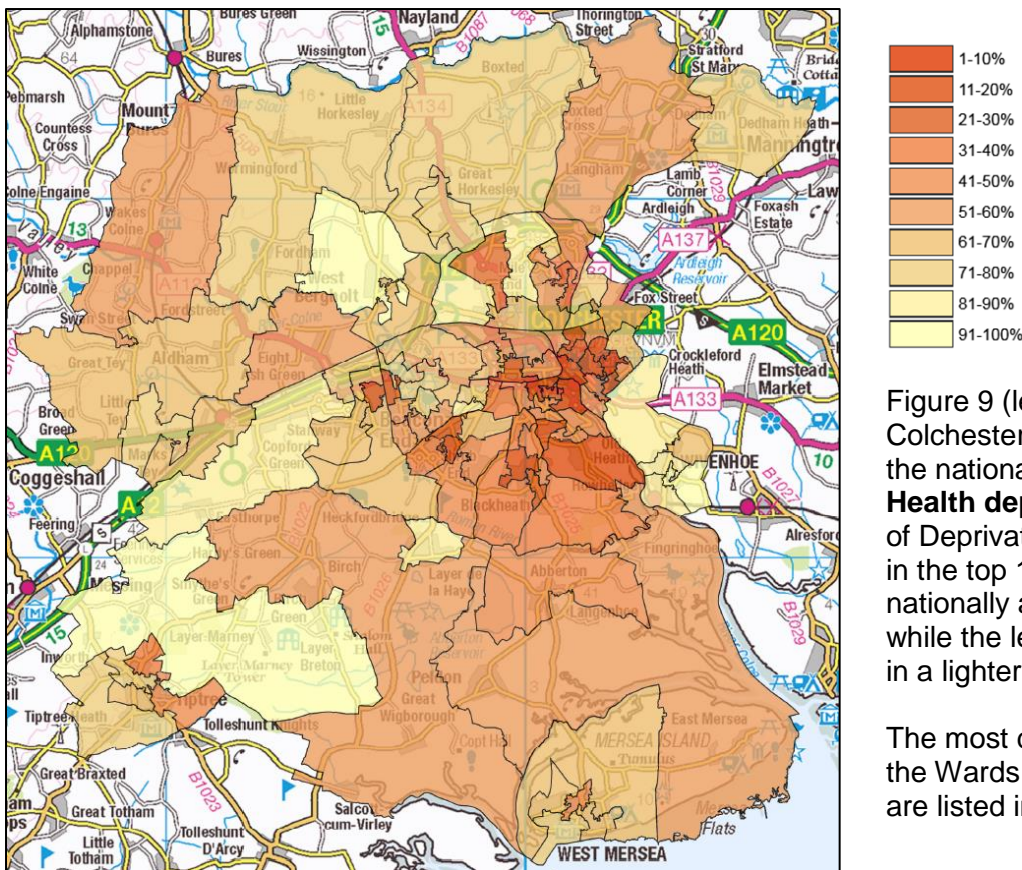


Figure 9 (left) shows all LSOAs in Colchester ranked by their position in the national decile rankings for the **Health deprivation & disability** Indices of Deprivation measure. LSOAs that fall in the top 10% of deprived areas nationally are represented in dark red, while the least deprived are represented in a lighter yellow colour.

The most deprived LSOAs, along with the Wards in which they are situated, are listed in Table 6 (page 19).

© Crown copyright and database rights 2015 Ordnance Survey 100023706.  
**Figure 9: Map of Colchester Borough LSOAs by health deprivation & disability decile**

## Summary:

Colchester has 30 LSOAs that fall into the top 40% of most deprived LSOAs in the county for this domain. These LSOAs are concentrated in the wards of **Berechurch, St Andrew’s, New Town, Shrub End** and **St Anne’s**. Colchester has one LSOA in the 10% most deprived in the country, found in the ward of **St Andrew’s**. A full breakdown is provided in table 6 (page 19).

## Health deprivation & disability domain by LSOA

The table below shows the LSOAs in Colchester borough that fall into the most deprived 40% by the health deprivation and disability domain in England.

Deprivation Decile (where 1 is most deprived 10% of LSOAs)	LSOA Name	Ward	Health Deprivation and Disability Rank (where 1 is most deprived)
1-10%	Magnolia	St Andrew's	1302
11-20%	New Town North	New Town	3688
	Forest	St Andrew's	3741
	St.Annes Estate	St Anne's	3813
	Barnhall	Harbour	4167
	Iceni Square	Shrub End	4829
	Salary Brook South	St Andrew's	5350
	Monkwick	Berechurch	5824
	East Ward	St Anne's	5899
	Speedwell	Harbour	6146
	Sycamore	St Andrew's	6152
21-30%	Paxmans	New Town	6187
	Harwich Road	St Anne's	7255
	Wheatfield Road	Stanway	8335
	Blackheath	Berechurch	8537
	Chinook	Highwoods	8742
	Wimpole Central	New Town	8858
	Rayner Road	Shrub End	9165
	Collingwood	Lexden	9223
31-40%	Castle Central	Castle	9618
	Eastern Approaches North	St Andrew's	9959
	Defoe	Mile End	10135
	Maypole	Tiptree	10513
	Gosbecks	Shrub End	11016
	Highwoods East	Highwoods	12029
	The Willows	Berechurch	12285
	Friday wood	Berechurch	12286
	Berechurch North	Berechurch	12594
	Donyland Woods	East Donyland	12901
Butt Road	Christ Church	12907	

**Table 6: Most deprived LSOAs in Colchester by health deprivation & disability**

The most deprived LSOA in Colchester by the health deprivation & disability domain is Magnolia in the ward of St Andrew's, which is ranked as the 1,302<sup>nd</sup> most deprived in England by this measure (out of 32,844 LSOAs nationally).

Berechurch and St Andrew's have the highest number of LSOAs which fall into the top 40% most deprived in England by this measure, with 5 LSOAs each.

Please find these 30 LSOAs mapped separately in Figure 10 (page 20).

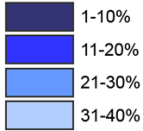
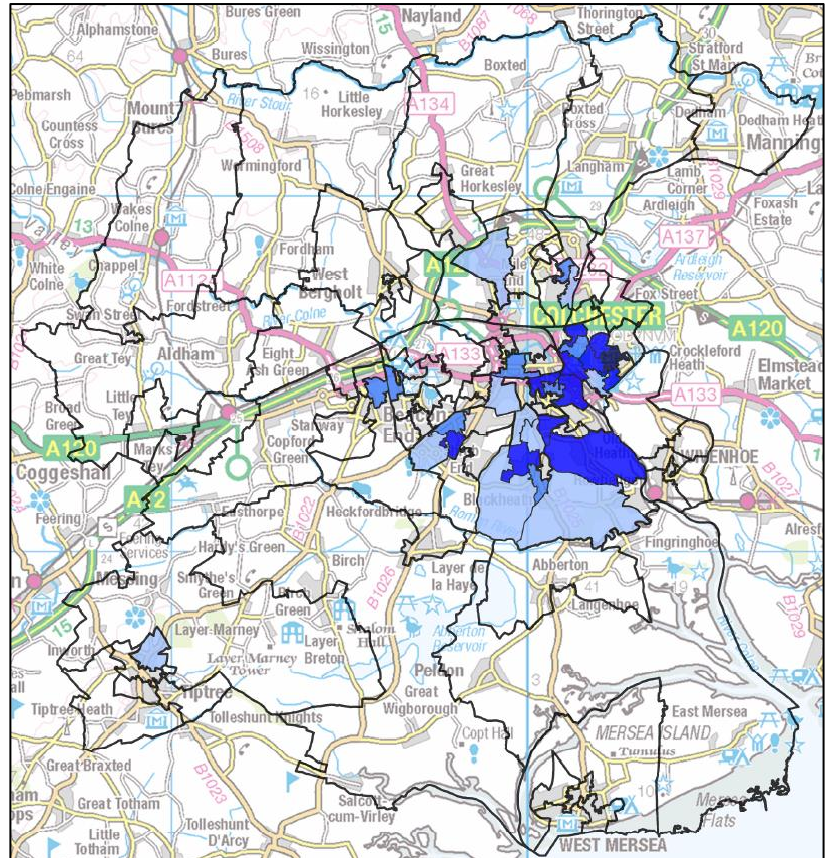


Figure 10 (right) shows all 30 LSOAs in Colchester that fall into the top 40% most deprived by the health deprivation and disability domain nationally. LSOAs that fall in the top 10% of deprived areas nationally are represented in dark blue, while the less deprived LSOAs are represented in a lighter blue colour.



© Crown copyright and database rights 2015 Ordnance Survey 100023706.  
**Figure 10: Map of most deprived Colchester Borough LSOAs by health deprivation & disability**

## Changes in health deprivation & disability since 2010

In the 2010 Indices of Deprivation, Colchester had 1 LSOA in the 10% most deprived by the health deprivation & disability domain nationally, which was Magnolia. This remains unchanged. Colchester had no LSOAs in the most deprived 10% in 2007.

In 2010, Colchester had 15 LSOAs in the top 40% most deprived by the health deprivation & disability domain in England. This has since doubled to 30 LSOAs.



# Crime deprivation in Colchester

The crime domain measures the risk of personal and material victimisation at local level.

All LSOAs nationally are ranked from most to least deprived, and are then divided into 10 equal groups, or deciles. The analysis of crime deprivation in this report shows which Colchester LSOAs fall into which of these deciles, with the 1-10% decile representing the most deprived LSOAs in the country, and 91-100% the least.

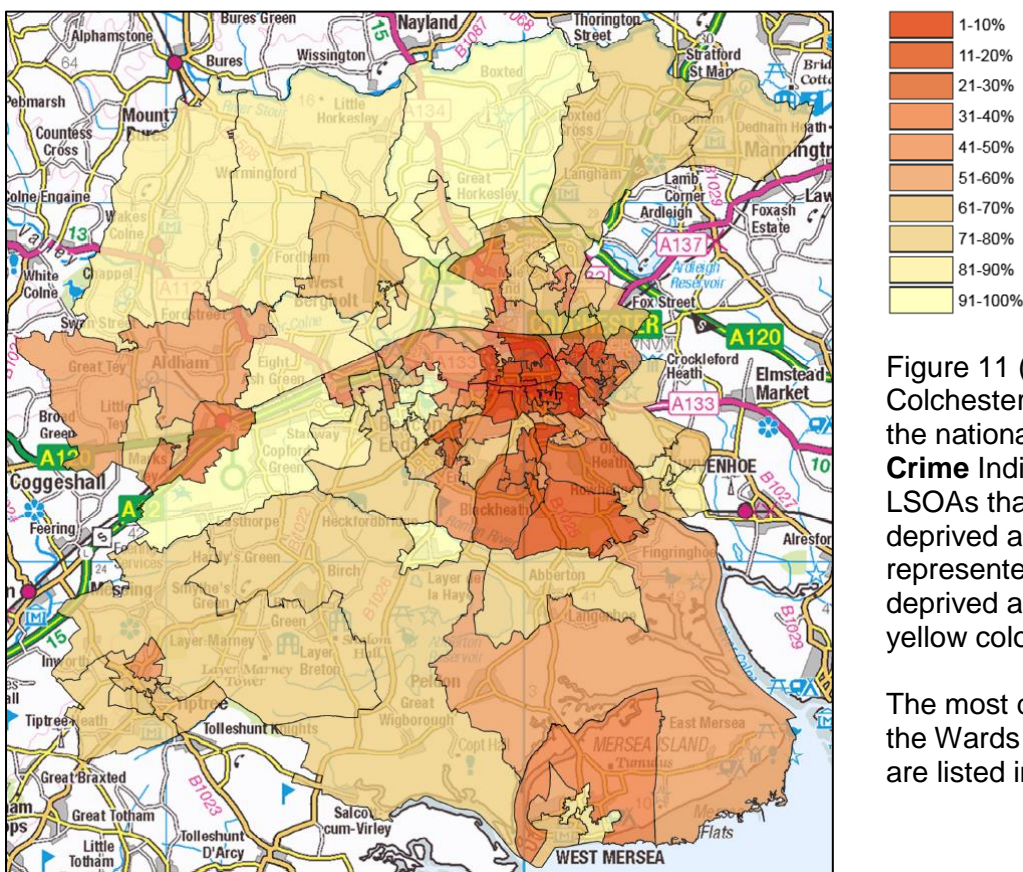


Figure 11 (left) shows all LSOAs in Colchester ranked by their position in the national decile rankings for the **Crime** Indices of Deprivation measure. LSOAs that fall in the top 10% of deprived areas nationally are represented in dark red, while the least deprived are represented in a lighter yellow colour.

The most deprived LSOAs, along with the Wards in which they are situated, are listed in Table 7 (page 22).

© Crown copyright and database rights 2015 Ordnance Survey 100023706.  
**Figure 11: Map of Colchester Borough LSOAs by crime deprivation decile**

## Summary:

Colchester has 33 LSOAs that fall into the top 40% of most deprived LSOAs in the county for this domain. These LSOAs are concentrated in the wards of **St Andrew's, New Town, Berechurch, Castle** and **St Anne's**. Colchester has 11 LSOAs in the 10% most deprived in the country, found in the wards of **New Town, Castle, Christ Church, Harbour, St Anne's** and **St Andrew's**. A full breakdown is provided in table 7 (page 22).

## Crime deprivation domain by LSOA

The table below shows the LSOAs in Colchester borough that fall into the most deprived 40% by the crime deprivation domain in England.

Deprivation Decile	LSOA Name	Ward	Crime Rank (where 1 is most deprived)
1-10%	Castle Central	Castle	675
	Castle East	Castle	938
	New Town North	New Town	1125
	Butt Road	Christ Church	1133
	Barnhall	Harbour	1261
	Paxmans	New Town	2527
	Sycamore	St Andrew's	2687
	Wimpole Central	New Town	2834
	New Town Garrison	New Town	2838
	Harwich Road	St Anne's	3192
	Riverside	Castle	3196
11-20%	Winchester Road	New Town	3575
	The Willows	Berechurch	3631
	Blackheath	Berechurch	3698
	Salary Brook South	St Andrew's	4127
	Magnolia	St Andrew's	4428
	Forest	St Andrew's	4514
	Donyland Woods	East Donyland	4835
	Eastern Approaches North	St Andrew's	5504
	Rayner Road	Shrub End	6229
	St.Marys	Castle	6403
21-30%	St.Annes Estate	St Anne's	6751
	Friday Wood	Berechurch	7582
	Monkwick	Berechurch	8626
	Speedwell	Harbour	8901
	Iceni Square	Shrub End	9418
31-40%	Marks Tey	Marks Tey	9919
	Strood	West Mersea	10127
	Defoe	Mile End	10291
	East Ward	St Anne's	10341
	Parsons Heath	St Anne's	10750
	Cambridge Road	Christ Church	12129
	Salary Brook North	St Andrew's	12916

Table 7: Most deprived LSOAs in Colchester by crime

The most deprived LSOA in Colchester by the crime deprivation domain is Castle Central in the ward of Castle, which is ranked as the 675<sup>th</sup> most deprived in England by this measure (out of 32,844 LSOAs nationally). There are 10 further LSOAs which fall into the 10% most deprived in England by this measure, with 4 of these located in the ward of New Town, and another 2 in Castle.

St Andrews has the highest number of LSOAs which fall into the top 40% most deprived in England by this measure, with 6 LSOAs, while New Town is second with 5.

Please find these 33 LSOAs mapped separately in Figure 12 (page 23).



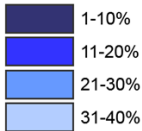
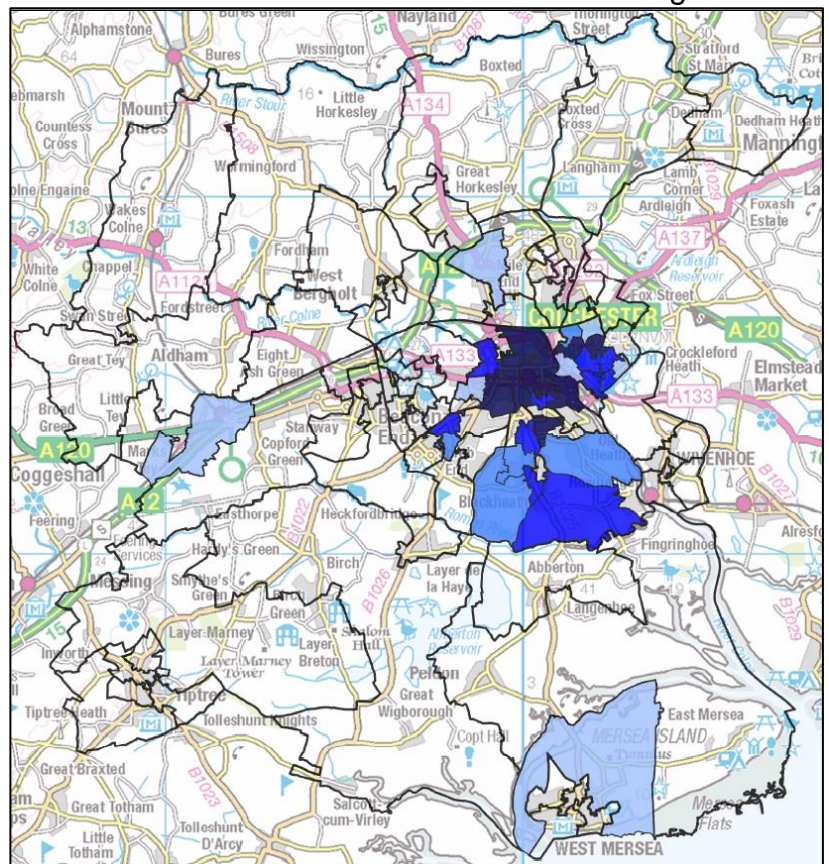


Figure 12 (right) shows all 33 LSOAs in Colchester that fall into the top 40% most deprived by the crime deprivation domain nationally. LSOAs that fall in the top 10% of deprived areas nationally are represented in dark blue, while the less deprived LSOAs are represented in a lighter blue colour.



© Crown copyright and database rights 2015 Ordnance Survey 100023706.

Figure 12: Map of most deprived Colchester Borough LSOAs by crime deprivation

## Changes in crime deprivation since 2010

There have been significant changes since 2010 in regard to Crime deprivation in Colchester, notably in the 1-10% decile.

In the 2010 Indices of Deprivation, Colchester had no LSOAs in the 10% most deprived by crime deprivation nationally. Since then, 11 LSOAs in Colchester now fall into the 10% most deprived by this measure.

The most deprived LSOA in Colchester by crime deprivation is Castle Central. In 2010, the most deprived was Salary Brook North, which fell into the 11-20% decile.

In 2010, Colchester had 25 LSOAs in the top 40% most deprived by crime deprivation in England. This has since increased by 8.

# Barriers to housing & services in Colchester

The Barriers to Housing and Services domain measure the physical and financial accessibility of housing and local services. The indicators fall into two sub-domains: ‘geographical barriers’, which relate to the physical proximity of local services, and ‘wider barriers’ which includes issues relating to access to housing such as affordability and homelessness.

All LSOAs nationally are ranked from most to least deprived, and are then divided into 10 equal groups, or deciles. The analysis of barriers to housing and services deprivation in this report shows which Colchester LSOAs fall into which of these deciles, with the 1-10% decile representing the most deprived LSOAs in the country, and 91-100% the least.

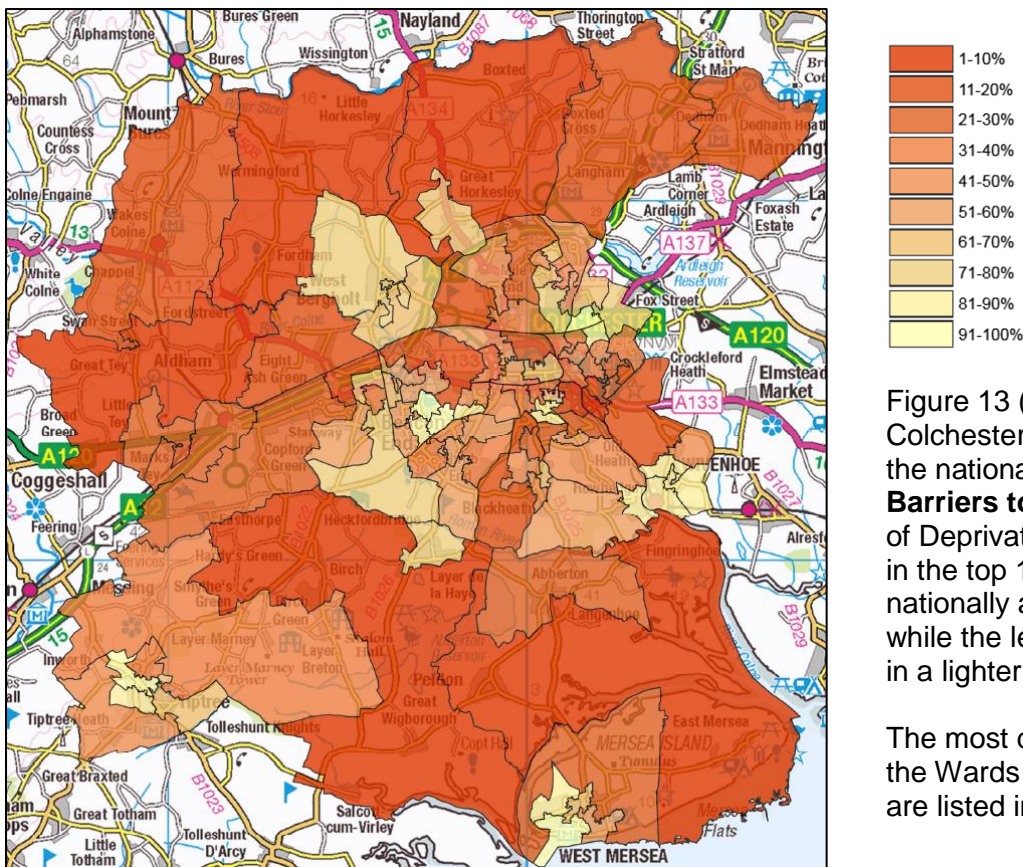


Figure 13 (left) shows all LSOAs in Colchester ranked by their position in the national decile rankings for the **Barriers to housing & services** Indices of Deprivation measure. LSOAs that fall in the top 10% of deprived areas nationally are represented in dark red, while the least deprived are represented in a lighter yellow colour.

The most deprived LSOAs, along with the Wards in which they are situated, are listed in Table 8 (page 25).

© Crown copyright and database rights 2015 Ordnance Survey 100023706.

**Figure 13: Map of Colchester Borough LSOAs by barriers to housing & services decile**

**Summary:**

Colchester has 45 LSOAs that fall into the top 40% of most deprived LSOAs in the county for this domain. These LSOAs are concentrated in the wards of **St Andrew’s, St Anne’s, Berechurch, Mile End and New Town**. Colchester has 6 LSOAs in the 10% most deprived in the country, found in the wards of **Fordham and Stour, St Andrew’s, Pyefleet, Birch and Winstree and Great Tey**. A full breakdown is provided in table 8 (page 25).

## Barriers to housing & services domain by LSOA

The table below shows the LSOAs in Colchester borough that fall into the most deprived 40% by the barriers to housing and services domain in England.

Barriers to Housing and Services Decile	LSOA Name	Ward	Barriers to Housing and Services Rank (1 is most deprived)
1-10%	Eastern Approaches South	St Andrew's	21
	Pyefleet Majority	Pyefleet	483
	Birch & Wigborough	Birch and Winstree	1153
	Tey & Aldham	Great Tey	2116
	Boxted & Horkesley	Fordham and Stour	2557
	Stour View	Fordham and Stour	3113
11-20%	Dedham Heath	Dedham and Langham	3422
	Spring Lane	Lexden	3546
	Salary Brook North	St Andrew's	3551
	Wivenhoe Park	Wivenhoe Cross	3881
	Braiswick	Mile End	4241
	Berechurch North	Berechurch	4457
	St Margaret's Cross	Dedham and Langham	4576
	Fordham Heath	West Bergholt and Eight Ash Green	4890
	Eastern Approaches North	St Andrew's	4892
	Friday Wood	Berechurch	5436
	Chappel Viaduct	Great Tey	6155
	Warren Farm	Stanway	6252
	Paxmans	New Town	6431
21-30%	Salary Brook South	St Andrew's	6713
	Copford and West	Copford and West Stanway	6999
	Strood	West Mersea	7158
	The Willows	Berechurch	7513
	Cuckoo Farm	Mile End	7898
	Barnhall	Harbour	8267
	Little Tey	Marks Tey	8349
	Marks Tey	Marks Tey	8531
	Magnolia	St Andrew's	9281
	Riverside	Castle	9599
	Whitehall	Harbour	9711
	Pyefleet North West	Pyefleet	9834
	31-40%	Broadlands	St Anne's
Longridge		St Anne's	10959
Gosbecks		Shrub End	11086
Turner Rise		Mile End	11224
Alamein Road & Homefield Road		Shrub End	11241
Maypole		Tiptree	11762
Forest		St Andrew's	11793
Messing & Marney		Birch and Winstree	11913
East Ward		St Anne's	12186
St.Annes Estate		St Anne's	12192
St.Marys		Castle	12210
New Town North		New Town	12289
New Town Garrison		New Town	12402
Wheatfield Road		Stanway	12706

Table 8: Most deprived LSOAs in Colchester by barriers to housing & services deprivation

The most deprived LSOA in Colchester by the barriers to housing and services deprivation domain is Eastern Approaches South in the ward of St Andrew's, which is ranked as the 21<sup>st</sup> most deprived in England by this measure (out of 32,844 LSOAs nationally). Pyefleet Majority LSOA in Pyefleet, Birch & Wigborough in Birch and Winstree, Tey and Aldham in Great Tey, and Boxted & Horkesley and Stour View in Fordham and Stour also fall into the 10% most deprived in England by income deprivation.



St Andrews has the highest number of LSOAs which fall into the top 40% most deprived in England, with 6 LSOAs, while St Anne's is second with 4.

Please find these 45 LSOAs mapped separately in Figure 14 below.

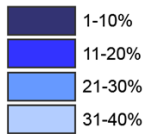
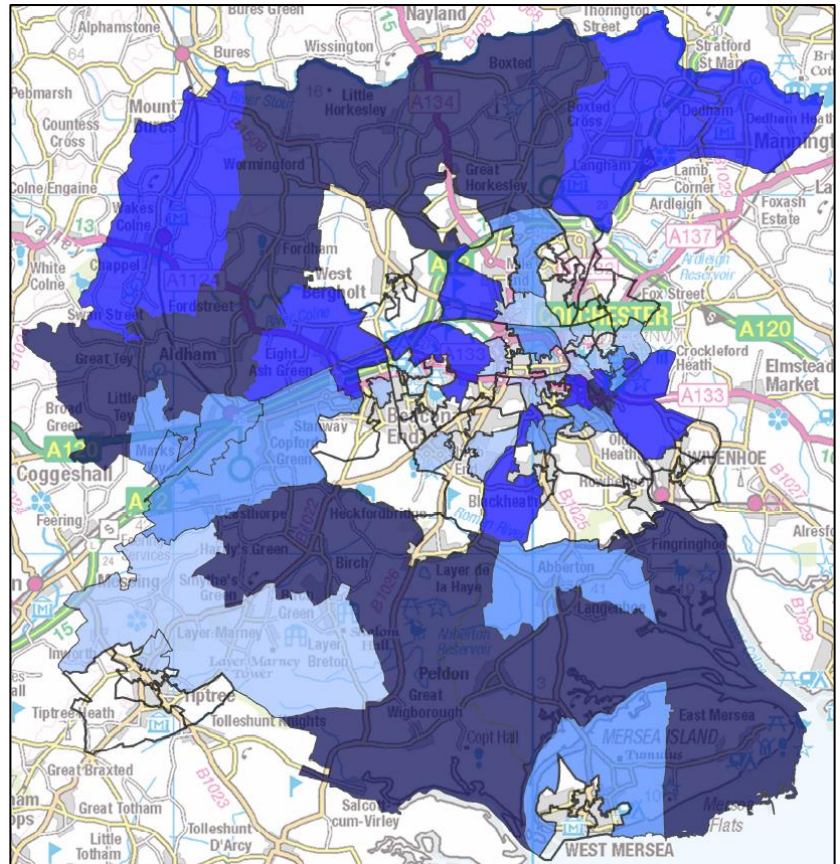


Figure 14 (right) shows all 45 LSOAs in Colchester that fall into the top 40% most deprived by the barriers to housing and services domain nationally. LSOAs that fall in the top 10% of deprived areas nationally are represented in dark blue, while the less deprived LSOAs are represented in a lighter blue colour.



© Crown copyright and database rights 2015 Ordnance Survey 100023706.

**Figure 14: Map of most deprived Colchester Borough LSOAs by barriers to housing and services deprivation**

## Changes in barriers to housing and services deprivation since 2010

In the 2010 Indices of Deprivation, Colchester had 7 LSOAs in the 10% most deprived by income deprivation nationally. Since then, the number of LSOAs in the 10% most deprived has dropped to 6, with Warren Farm and Chappel Viaduct moving down to the 11-20% most deprived decile, and Marks Tey and Copford & West now classified in the 21-30% decile.

The most deprived LSOA in Colchester by barriers to housing and services deprivation was Marks Tey in 2010. Marks Tey is now no longer classified in the most deprived 10%, with Eastern Approaches South now the most deprived by this measure.

In 2010, Colchester had 44 LSOAs in the top 40% most deprived by barriers to housing and services deprivation in England. This has since increased by 1.

# Living environment in Colchester

The living environment deprivation domain measures the quality of the local environment. The indicators fall into two sub-domains. The 'indoors' living environment measures the quality of housing; while 'outdoors' living environment contains measures of air quality and road traffic accidents.

All LSOAs nationally are ranked from most to least deprived, and are then divided into 10 equal groups, or deciles. The analysis of living environment deprivation in this report shows which Colchester LSOAs fall into which of these deciles, with the 1-10% decile representing the most deprived LSOAs in the country, and 91-100% the least.

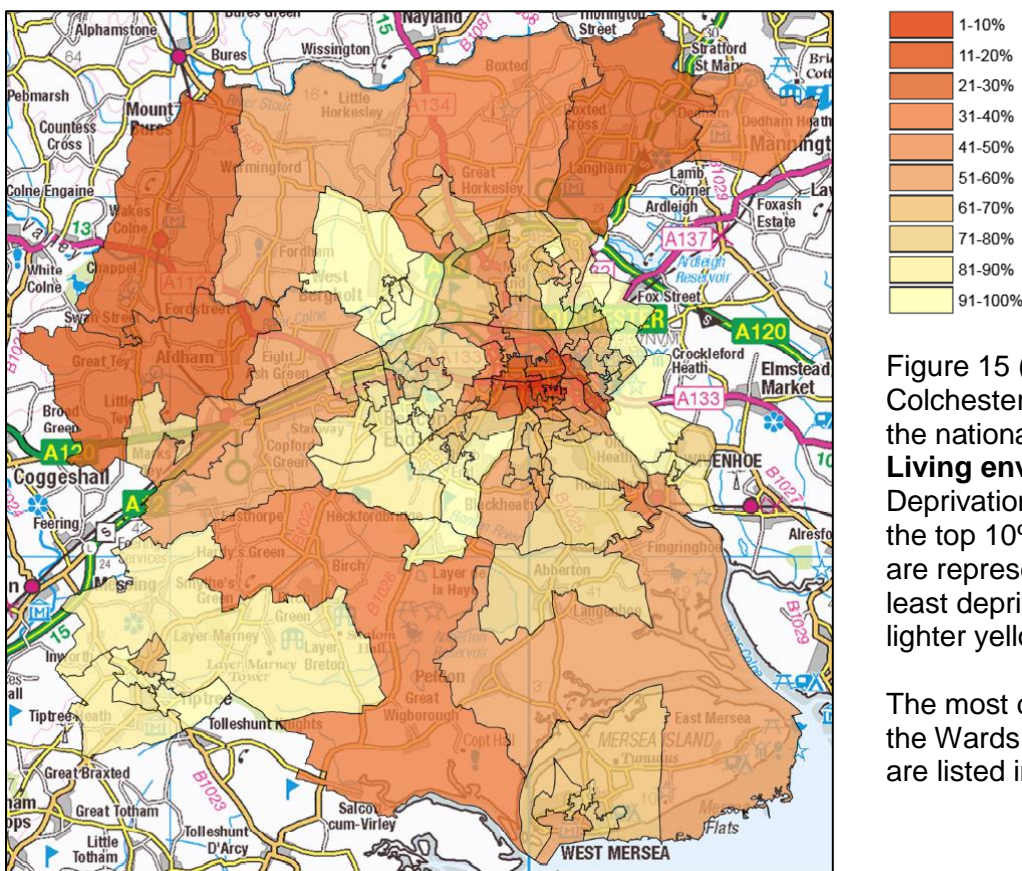


Figure 15 (left) shows all LSOAs in Colchester ranked by their position in the national decile rankings for the **Living environment** Indices of Deprivation measure. LSOAs that fall in the top 10% of deprived areas nationally are represented in dark red, while the least deprived are represented in a lighter yellow colour.

The most deprived LSOAs, along with the Wards in which they are situated, are listed in Table 9 (page 28).

© Crown copyright and database rights 2015 Ordnance Survey 100023706.  
**Figure 15: Map of Colchester Borough LSOAs by living environment deprivation decile**

## Summary:

Colchester has 20 LSOAs that fall into the top 40% of most deprived LSOAs in the county for this domain. These LSOAs are concentrated in the wards of **New Town** and **Castle**. Colchester has 3 LSOAs in the 10% most deprived in the country, all found in the ward of **New Town**. A full breakdown is provided in table 9 (page 28).



## Living environment domain by LSOA

The table below shows the LSOAs in Colchester borough that fall into the most deprived 40% by the living environment deprivation domain in England.

Living Environment Decile	LSOA Name	Ward	Living Environment Rank (1 is most deprived)
1-10%	New Town North	New Town	1441
	Wimpole Central	New Town	1651
	New Town Garrison	New Town	2262
11-20%	Winchester Road	New Town	3390
	Castle Central	Castle	4954
	Castle East	Castle	5018
21-30%	Butt Road	Christ Church	6615
	Eastern Approaches South	St Andrew's	6877
	East Ward	St Anne's	7602
	St Margaret's Cross	Dedham and Langham	8961
	Tey & Aldham	Great Tey	9545
	Chappel Viaduct	Great Tey	9668
31-40%	Riverside	Castle	10407
	St.Marys	Castle	10617
	Dedham Heath	Dedham and Langham	10745
	Birch & Wigborough	Birch and Winstree	10810
	Boxted & Horkesley	Fordham and Stour	11012
	Paxmans	New Town	11017
	Rowhedge	East Donyland	11176
	Cambridge Road	Christ Church	12870

**Table 9: Most deprived LSOAs in Colchester by living environment deprivation**

The most deprived LSOA in Colchester by the living environment domain is New Town North in the ward of New Town, which is ranked as the 1,441<sup>st</sup> most deprived in England by this measure (out of 32,844 LSOAs nationally). Wimpole Central and New Town Garrison, both in New Town, also fall into the 10% most deprived in England by income deprivation.

New Town ward has the highest number of LSOAs which fall into the top 40% most deprived in England by this measure, with 5 LSOAs, while Castle is second with 5.

Please find these 20 LSOAs mapped separately in Figure 16 (page 29).

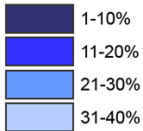
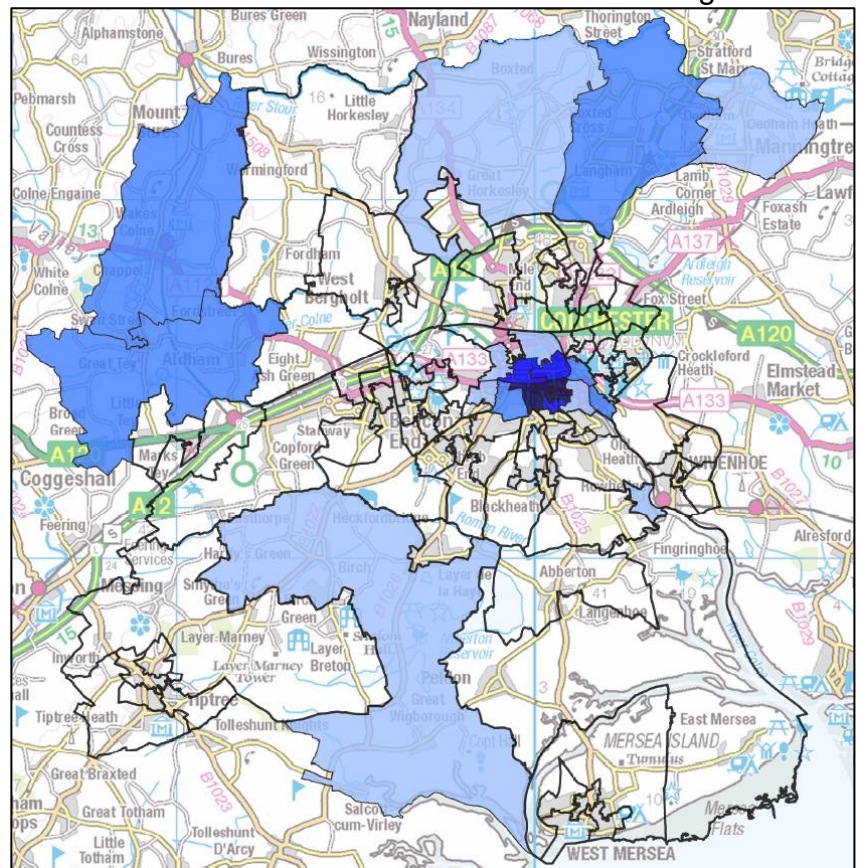


Figure 16 (right) shows all 20 LSOAs in Colchester that fall into the top 40% most deprived by the living environment domain nationally. LSOAs that fall in the top 10% of deprived areas nationally are represented in dark blue, while the least deprived are represented in a lighter blue colour.



© Crown copyright and database rights 2015 Ordnance Survey 100023706.

Figure 16: Map of most deprived Colchester Borough LSOAs by living environment deprivation

## Changes in living environment deprivation since 2010

In the 2010 Indices of Deprivation, Colchester had no LSOAs in the 10% most deprived by living environment deprivation nationally. Since then, 3 LSOAs in Colchester now fall into the 10% most deprived by this measure.

The most deprived LSOA in Colchester by living environment deprivation is New Town North. In 2010, the most deprived was New Town Garrison, which fell into the 11-20% decile.

In 2010, Colchester had 13 LSOAs in the top 40% most deprived by living environment deprivation in England. This has since increased by 7.