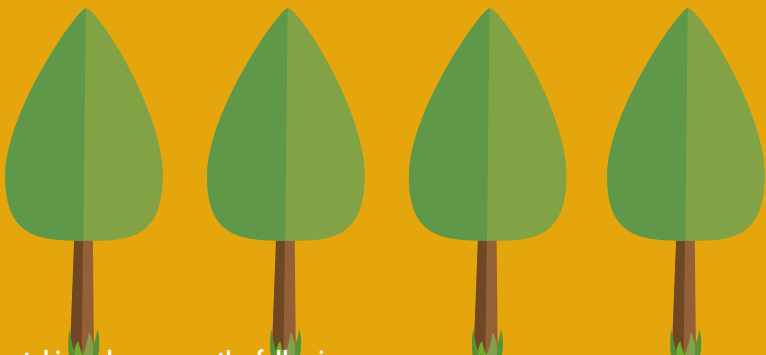


# Castle Park's Summer Education Programme



taking place across the following venues:

**COLCHESTER CASTLE PARK - CO1 1UG**

**HIGH WOODS COUNTRY PARK - CO4 5JR**



This passport belongs to:

# Letter from Councillor Feltham

Welcome all you young wildlife explorers to our new summer countryside events. I hope you will enjoy finding out about the new and exciting things we have going on in Colchester's parks. We're all very lucky to have access to these beautiful outdoor spaces which are home to thousands of different species of birds, bugs, plants and beasts.

Our new adventure programme is a fun way to create a snapshot of the variety of life that can be found in our area whilst giving you the opportunity to contribute to a real scientific survey. This will help us to find and identify different species of wildlife and insects. The information you help us gather will go towards local and national databases that will monitor our local wildlife. And then we will share that new knowledge so that more people are aware.

Good luck and thank you for helping us discover what Colchester really has to offer our smaller four legged and two winged residents. The more we know the more we can do to protect their habitats. So what you do will really make a difference.



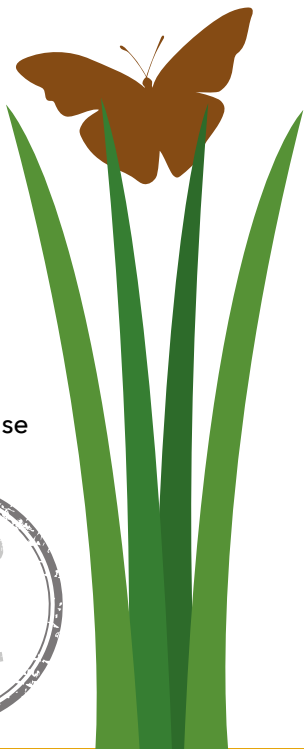
# Discover how the Passport Programme works

Take advantage of our summer programme of events and discover more about plants, bugs, history and the solar system.

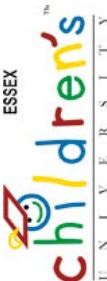
Make sure you get your passport stamped by a Park Ranger or Event Leader after every event you attend.

Collect six stamps and exchange your passport for a certificate and a special pin to commemorate the Castle Park's 125th anniversary.

To obtain a certificate and pin, please bring your passport to either The Ranger Station in Castle Park, or High Woods Visitor Centre.



Signature



Activity

Hours

Date

# Children's University learning destinations

Essex Children's University encourages young people to try new and exciting learning experiences outside of the school day.

CU Learners collect stamps in their own Passport to Learning and are working towards a National CU Award, presented at a Children's University Graduation. These events have the CU Learning Destination logo next to them and CU Learners can allocate 1 hour of CU Learning for each activity they attend.

For more information visit:  
[www.essexchildrensuniversity.co.uk](http://www.essexchildrensuniversity.co.uk)



# The History Of Castle Park - Guided Tour

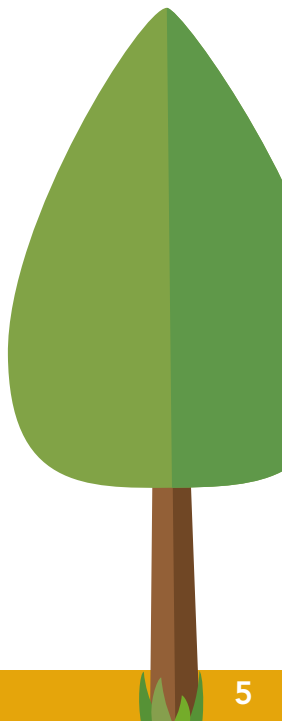
Castle Park 2000 years in the making - a guided tour through the ages.

Suitable 8+ | Booking required | FREE

Meet at the Museum Street Entrance

|                     |        |
|---------------------|--------|
| Friday 28 July      | 6:30pm |
| Sunday 30 July      | 2pm    |
| Friday 11 August    | 6pm    |
| Sunday 13 August    | 2pm    |
| Sunday 20 August    | 2pm    |
| Friday 25 August    | 6:30pm |
| Sunday 3 September  | 2pm    |
| Sunday 24 September | 2pm    |
| Sunday 1 October    | 2pm    |
| Sunday 15 October   | 2pm    |

**For booking  
details, see p.25**



# Castle Park Events

For booking  
details, see p.25

## Tree Tour

Guided walk covering the wide range of trees found in the park.

Suitable 7+ | Booking required | Free

Meet at the Visitor Information Centre

Sunday 21 May, 2pm

Sunday 2 July, 2pm



## Mini Beasts

Why not come and find out about the minibeasts you may find on your doorstep with the Colchester Zoo education team and Castle Park Rangers.

Suitable 5+ | Booking required | Free

Meet at Castle Park Ranger Station

Saturday 27 May, 1pm

Saturday 15 July, 1pm



## Bat Walk

Meet the Guide and join the led walk around Castle Park identifying different bats using bat detectors. Please bring a torch.

Suitable 7+ | Booking required | Free

Meet at Castle Park Ranger Station

Friday 30 June, 8:40pm

Thursday 3 August, 8:00pm



## Space Talks

Presented by FOCP, join the North Essex Astronomical Society for two space talks.

Suitable 7+ | Booking required | Free

Meet at Lower Bowls Green

Tour of Solar System

Sunday 23 July, 7pm

The Moons of the Solar System

Sunday 6 August, 7pm



Sponsored by Friends of Castle Park



## Garden Tour

Join the Head Gardener for a guided walk through the formal gardens at Castle Park. Learn what goes into each season's planting and the tasks to maintain them.

Suitable 7+ | Booking required | Free

Meet at Castle Park Ranger Station

Wednesday 26 July, 11am

Thursday 31 August, 11am



## Birds of Castle Park

Learn to use your ears to ID birds of the park; although if you do have binoculars bring them along. Led by 'The Birds of Essex' author Simon Wood.

Suitable 7+ | Booking required | Free

Meet at Castle Park Ranger Station

Tuesday 6 June, 8am

Tuesday 4 July, 8am



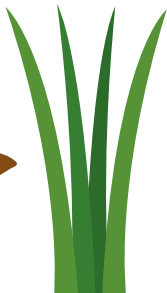
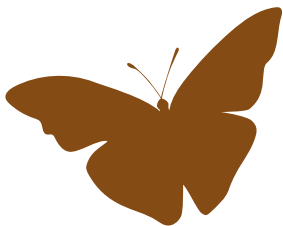
*Sponsored by Friends of Castle Park*





## Bees and their homes

Presented by FOCP, join Castle  
Parks Bee expert to learn about the  
different types of bees in the world  
and what we can do to help them.  
Suitable 7+ | Booking required | Free  
Meet at Castle Park Ranger Station  
Saturday 19 August, 2pm





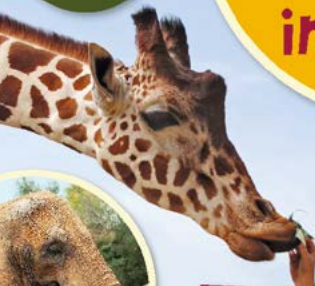
Plenty of  
undercover  
areas to  
explore!



**FUN**  
for all the  
family!

Visit  
**COLCHESTER**  
**ZOO**  
in 2017!

AN ARRAY  
OF DAILY  
ENCOUNTERS!



Open  
all year  
round!

Except Christmas day.



HAND FEED  
A GENTLE GIANT!



[www.colchesterzoo.org](http://www.colchesterzoo.org)

© Kathryn Hain - © David Murray

COLCHESTER  
**ZOO**  
Action for the Wild

# SUPPORT YOUR PARK



## BECOME A FRIEND

Enjoy and garden our own bee border

Discount on food bought in the Café in the Park

Help raise money to purchase Park additions

Help to maintain a valued part of  
Colchester History

For further information please contact the  
Honorary Secretary, Friends of Castle Park, c/o  
Rangers Office, Castle Park, Colchester.

[www.friendsofcastlepark.com](http://www.friendsofcastlepark.com)

 /FriendsOfCastlePark

I wish to join the Friends of Castle Park.  
Annual membership (April to March).  
**Individual £6.00 | Family £8.00**

Please make cheques payable to the  
"Friends of Castle Park"

**Name(1)** .....

**Name(2)** .....

**Address:** .....

.....

.....

**Post code:** .....

**Email:** .....

**Signature:** .....

**Date:** .....

Please send completed form and remittance to  
the Secretary, Friends of Castle Park, C/O Castle  
Park Rangers, Colchester Borough Council, Rowan  
House, 33 Sheepen Road, Colchester, CO3 3WG

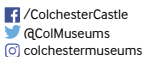


# START **YOUR** ADVENTURE...



## THROUGH OVER 2000 YEARS OF COLCHESTER'S HISTORY!

FOR  
SPECIAL  
EVENTS  
CHECK OUR  
WEBSITE



# High Woods Events

For booking  
details, see p.25

## Wildlife Walks

Want to know what wildlife is living in the parks?

Join the Ranger to discover more.

Suitable for all ages | Booking not  
required | Free

**Saturday 13 May, 2pm**

Meet at Lexden Park Car Park

**Tuesday 13 June, 7pm**

Meet at Westlands Country Park

**Sunday 9 July, 2pm**

Meet at Lexden Springs



## Bird Song and Breakfast

Learn to use your ears to ID birds of  
the park; although if you do have  
binoculars bring them along. Led by  
'The Birds of Essex' author Simon  
Wood. Enjoy a bacon or veggie option  
and a hot drink to finish.

Meet at High Woods Country Park Visitor Centre.

Suitable 8+ | Booking required | £7.30 |

**Saturday 20 May, 5:30am**





## Freshwater Friends

Join the Ranger for an opportunity to pond dip at one of the liveliest times of year in the pond. Afterwards make your own freshwater friend to take home.

Suitable 5+ | Booking required |  
£4.30 per child

Meet at High Woods Country Park  
Visitor Centre

Wednesday 31 May, 10am



## Fishing for Beginners

A practical course for beginners to learn the basics of water safety, equipment, bait types and fish species. Let us know in advance if you need to borrow equipment.

Suitable 7+ | Booking required | £6  
Meet at High Woods Country Park  
Visitor Centre.

Sunday 11th June, 11am





## Bushcraft for Beginners

An introduction to basic bushcraft skills including fire lighting, knife skills, wild food, foraging and shelter building. Children under 16 must be accompanied by an adult.

Suitable 8+ | Booking required | £10 per adult, £5 per child

Meet at High Woods Country Park Visitor Centre

Sunday 18 June, 10am (Adult Session)

Saturday 16 September, 10am



## Tree Trail

Join the Ranger for a walk around High Woods and learn about the different trees that can be found and how they are managed.

Suitable for all | Booking not required | Free

Meet at High Woods Country Park Visitor Centre

Wednesday 26 July, 10am





## Amazing Animals

Help the Ranger find signs of animal life in the park on our discovery trail and check the live small mammal traps.

Afterwards get creative and make your own sock animal to take home.

Suitable 5+ | Booking required | £4.30 per child

Meet at High Woods Country Park

Visitor Centre | Wednesday 26 July, 10am

## Creatures of the Deep

Search the depths of the pond and discover the amazing creatures that live there. Then join the Ranger for a craft session creating your own pond life keepsake.

Suitable 5+ | Booking required | £4.30 per child

Meet at High Woods Country Park

Visitor Centre

Wednesday 2 August, 10am





## Summer Insects and Butterflies

Join Colchester Natural History Society looking for butterfly and day-flying moth species as well as other grassland, heathland and tree insects, dragonflies and damselflies.

Suitable for all | Booking not required | Free

Meet at Hilly Fields Local Nature Reserve  
Saturday 5 August, 10am



## Fairies and Pixies

Join the Ranger in looking for signs of fairies and pixies in the woods. Build a fairy glade. Create a pixie picnic and discover the wonders of these small magical folk.

Meet at High Woods Country Park  
Visitor Centre

Suitable 4+ | Booking required | £4.30  
per child

Wednesday 9 August, 10am



## Bat Evening

Join the led walk around Lexden Park or High Woods Country Park identifying different bats using bat detectors.

Please bring a torch.

Suitable 4+ | Booking required | £4.30 per adult, Children FREE

**Friday 11 August 7:40pm**

Lexden Car Park, Church Lane, CO3 3QX

**Saturday 19 August, 7:45pm**

Meet at High Woods Country Park

Visitor Centre



## Dens and Survival

Can you build a den that can stand up to the 'rain shower' test with you inside? Then create a piece of natural art to take home. Wear suitable clothing and sturdy footwear.

Suitable 6+ | Booking required | £4.30 per child | Meet at High Woods Country Park Visitor Centre

**Wednesday 16 August, 10am**





## Brilliant Bug Hunt

Explore the woodland and wildflower meadows to discover the bugs, butterflies and other mini beasts living here. Afterwards make your own set of 'Bug-noculars'.

Suitable 5+ | Booking required |

£4.30 per child

Meet at High Woods Country Park  
Visitor Centre

Wednesday 23 August, 10am



## Wildlife Detectives

Try and find out which creatures have left trails and signs around the park. Create your own tracks to take home with you.

Suitable 6+ | Booking required |

£4.30 per child

Meet at High Woods Country Park  
Visitor Centre

Wednesday 30 August, 10am



## The Magical World of Mushrooms

Join fungi expert Sarah Manning on this stroll around High Woods Country Park discovering the fascinating mushrooms and toadstools that grow here.

Suitable for all | Booking required |  
£4.30 per person

Meet at High Woods Country Park  
Visitor Centre

Saturday 14 October 10:30am, 1:30pm



## Awesome Autumn Adventure

See how many different trees, seeds and leaves you can find on our tree trail and create a beautiful leaf mosaic.

Suitable 4+ | Booking required | £4.30  
per child

Meet at High Woods Country Park  
Visitor Centre

Wednesday 25 October, 10am



# Audio Tours

Take advantage of our audio tours of Castle Park and High Woods. You can download the files at [www.colchester.gov.uk/castlepark](http://www.colchester.gov.uk/castlepark).

## History of Castle Park with Ian Baalham

Join Ian as this audio tour will take you on a historical journey of Castle Park.

## Café to Café with Ian Baalham and the High Woods Rangers

Join Ian and the rangers as they show you how close Castle Park is to Highwoods while discussing the History and wildlife of the two parks.



# Educational Walks

If you're looking for an educational activity you can do on your own, our self-guided tours may be just what you're looking for.

You can download the walks at [www.colchester.gov.uk/castlepark](http://www.colchester.gov.uk/castlepark) or pick up a copy at the Visitor Centre at High Woods or Castle Park.

## Geology Trail

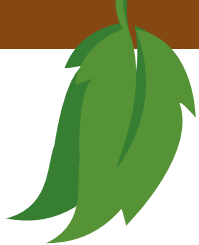
Find out more about the geology of Colchester during this intriguing trail that takes you through the town centre.

## View Finder Trail

Choose between a 5 mile or 10 mile walk that takes you on a creative trail.



# Volunteer at Castle Park



## Become a Park Ambassador

We're looking for volunteers to join our Park Rangers and Gardeners over the summer months. Tasks will include helping the public, litter picking, reporting any issues in the park and administering surveys.

Are you available on Saturdays or Sundays during May - September?

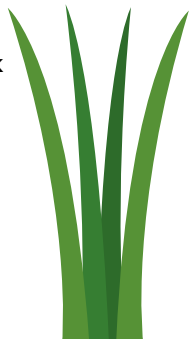
We have a day shift 11am - 1pm and an afternoon shift 2pm - 4pm.

Get in touch:

Find us at the Ranger Station, behind the Café in the Park

Give us a call **01206 282962**

Send us an email [parks@colchester.gov.uk](mailto:parks@colchester.gov.uk)





# Special Thanks



We'd like to give a warm thanks to all the individuals and groups that have made this Summer Education Programme possible:

James Hannan - NEAS  
Education Team - Colchester Zoo  
Sarah Laura - Essex Bat Group  
Simon Wood - Author, 'The Birds of Essex'  
Jon Wright - id verde  
Friends of Castle Park  
Colchester Tour Guides  
Children's University



---

## Booking Information

To book **CASTLE PARK** events:  
Visit the Rangers Station, Castle Park.  
Call 01206 282962

To book **HIGH WOODS COUNTRY PARK** events:  
Visit the Visitor Information Centre, High Woods.  
Call 01206 282920

## Notes

This image shows a full page of primary-ruled paper. It features multiple horizontal rows, each consisting of two parallel dashed lines. These rows are designed to help young learners practice letter height and placement when writing. The background is white, and the dashed lines are black. There are no margins, text, or other markings on the page.

# Sketches



