

29 October 2019

Report of	Assistant Director of Policy and Corporate	Author	Carl Free
Title	Health and Safety Policy and Report 2019/20		☎ 506579
Wards affected	N/A		

1. Executive Summary

- 1.1 Colchester Borough Council has general duties under the Health and Safety at Work etc. Act 1974 and specific duties under the Management of Health and Safety at Work Regulations 1999, to ensure that employees, and others who may be affected, can work safely without risk to their safety or health.
- 1.2 Overall responsibility for Health and Safety rests with Cabinet but is overseen by the Chief Operating Officer and managed by the Corporate Health and Safety Officer and Designated Officers within services, who form the Health and Safety Committee.

2. Recommended Decision

- 2.1 To note the January to October 2019 annual report and agree the changes to the Health and Safety Policy which are required for 2019/20.

3. Reason for Recommended Decision

- 3.1 The Health and Safety Policy is included in the Council’s Policy Framework and is an integral part of the risk management process. As such it is appropriate to provide an annual report to the Governance and Audit Committee, to assist with the Committee’s responsibility for reviewing the effectiveness of risk management.

4. Background Information

Health and Safety Policy

- 4.1 The Health and Safety policy sets out the Council’s commitment to managing health and safety risks, organisation structure and the individual responsibilities, at all levels of the organisation. The only changes to the policy in 2019 are minor (moving responsibilities from Strategic Director to Chief Operating Officer now responsible for health and safety and removing Commercial department (now CCHL/Amphora) from the Organisation Structure).
- 4.2 The policy is supported by a set of arrangements that detail what the Council will do in practice to achieve the aims set out in the health and safety policy and to successfully manage health and safety.

5. Summary of Policy outcomes during January - October 2019

- 5.1 Audits of services and arrangements have been continued by the Corporate Health & Safety Officer during 2019. At the time of writing, audits and reviews are in progress for Ill Health (focusing on Musculoskeletal Disorders and Stress), Driving at Work and

Security (to prevent work-related violence towards staff). As these are broad and complex subjects, longer term action plans have been produced, however if serious risk or breaches are identified these are actioned without delay, and where possible 'easy win' immediate actions.

- 5.2 The Skyguard MySOS personal monitoring device remains in place as the corporate approach to supporting lone workers, with 50 devices and approximately 90 CBC lone workers. Skyguard devices are received well by lone workers and a review will be completed in 2020 to ensure the system remains suitable and is being used appropriately, and that lone worker requirements are met in all services.
- 5.3 The internal audit of health and safety at Colchester Borough Council provided an opinion of "Substantial Assurance" in 2018 and is on a biennial cycle so therefore is to next be completed in 2020.
- 5.4 Fire Risk Assessments for all corporate buildings (primarily used as CBC staff workplaces) were re-inspected in 2019 and no findings or recommendations were identified at a high-risk rating.
- 5.5 Near miss reporting continues to be encouraged as this helps management resolve concerns or issues before they become an incident and/or injury. The near miss report card has been successful in obtaining reports at Shrub End.
- 5.6 Corporate Health and Safety training continues to be well attended with approximately 240 staff trained this year so far and the courses delivered include:
 - IOSH Managing Safely
 - Managing Safely
 - Manual Handling
 - Conflict Management
 - Emergency First Aid at Work
 - Safe Use of Ladders and Stepladders Training
 - Health and Safety Induction
- 5.7 At least six days' worth of Practical Manual Handling training has been organised for the Neighbourhood Services Waste & Recycling collection teams. This was identified as a need for refresher training as part of the ill health review and higher manual handling risks involved in bag collection instead of wheeled bins. Train the trainer will also be arranged to ensure new staff can be trained without delay and regular refreshers and toolbox talks delivered.
- 5.8 There has been a positive downward trend in incidents involving serious injuries to staff or members of public taken to hospital for treatment, which are notifiable to the Health and Safety Executive often referred as "RIDDOR reports". These have reduced so far this year to 2, from 4 in 2018 and 7 in 2017.
- 5.9 People & Performance and Corporate Health and Safety, with the Live Well / Work Well (Wellbeing) Group, are working together on Stress Management and Mental Health, anticipated to be included as priorities in the corporate vision and wellbeing strategy, and delivering mental health awareness training for staff. A stress indicator survey will also be sent to all staff to help us identify the sources of work-related stress within the organisation, so resources can be focused to help eliminate or reduce the main factors of stress, reduce sickness absence and improve staff wellbeing.

6. Equality, Diversity and Human Rights implications

6.1 Equality Impact Assessment (EIA) [link](#)

7. Standard References

7.1 There are no particular references to publicity considerations or financial; community safety; health and safety or risk management implications.

7. Strategic Plan References

7.1 The failure to adequately identify and manage health and safety issues will affect the ability of the Council to achieve its strategic objectives.

8. Consultation

8.1 Details of consultation are included in the Document Information section of the policy.

9. Publicity Considerations

9.1 None

10. Financial implications

10.1 None

11. Health, Wellbeing and Community Safety Implications

11.1 None

12. Health and Safety Implications

12.1 The failure to adequately identify and manage health and safety issues may have an effect on the ability of the Council to deliver effective services.

13. Risk Management Implications

13.1 The failure to adequately identify and manage health and safety issues may have an effect on the ability of the Council to deliver effective services.

14. Appendices

14.1 Appendix A: Health and Safety Policy 2019-20

14.2 Appendix B: Health and Safety Arrangements



Health and Safety Policy 2019/20

October 2019

Contents

1. INTRODUCTION	3
2. STATEMENT	4
3. ORGANISATION	5
3.1 Organisation Structure	5
3.2 Organisation Health and Safety Responsibilities.....	6
4. RESPONSIBILITIES	7
4.0 Leader of the Council and Cabinet	7
4.1 Chief Executive	8
4.2 Chief Operating Officer (with Responsibility for Health and Safety)	9
4.3 Strategic Directors.....	10
4.4 Assistant Directors	11
4.5 Group Managers	12
4.6 Managers and Supervisors	14
4.7 Corporate Health and Safety Officer	15
4.8 Designated Officers for Health and Safety	16
4.9 Employees	17
5. DOCUMENT INFORMATION	18
5.1 Document Control	18

1. INTRODUCTION

This policy sets out our commitment to the health, safety and wellbeing of those working for Colchester Borough Council and anyone else who interacts with the services that we provide.

As an employer, we are aware of our general duties under the Health and Safety at Work etc. Act 1974 and our specific duties under the Management of Health and Safety at Work Regulations 1999. Where additional legislation relates to the activities that we are carrying out we will also ensure that our duties are fulfilled and our employees and others who may be affected can work safely without risk to their safety or health.

We will monitor and review this policy and associated documentation as necessary, at least every three years, unless any significant changes occur in the meantime.

“Colchester Borough Council is committed to the health, safety and wellbeing of its employees, customers and anyone who interacts with our services. We strive to create an environment in which our employees feel that their health, safety and wellbeing is integral to the organisation. We encourage everyone to be part of this positive culture so that we can continue to improve our standards throughout the organisation.”

2. STATEMENT

Colchester Borough Council is fully committed to complying with its statutory duties under the Health and Safety at Work etc. Act 1974 and associated legislation. The Council values the health, safety and wellbeing of its employees and will take all reasonably practicable measures to ensure a safe and healthy working environment for all employees, contractors, the public and others that may be affected by its activities.

The Council recognises that good health, safety and wellbeing is integral to our organisational and business performance and our service delivery decisions will always consider the impact on health, safety and wellbeing. This will help to deliver the Council's philosophy of a positive safety culture.

The Council will maintain an appropriate health and safety management system and organisation structure to support its statutory duties. We will:

- Assess risks and put adequate control measures in place
- Consult with employees on matters affecting their health and safety
- Provide and maintain a safe place of work with safe plant, equipment and personal protective equipment
- Ensure safe use, handling and storage of substances
- Provide information, instruction, training and supervision for employees to ensure that they are competent to carry out their tasks
- Prevent incidents, injuries and cases of work-related ill-health
- Maintain safe and healthy working conditions

All employees are required to follow this health and safety policy at all times and adhere to their own statutory requirements. We encourage any comments over health and safety in the workplace and will actively seek to rectify any areas of concern.

All contractors and others employed by Colchester Borough Council to perform work or provide service are required to maintain health and safety standards in accordance with this policy.

The effectiveness of this policy will be monitored and reviewed as necessary, at least every three years or when circumstances otherwise dictate.



Councillor Mark Cory
Leader of the Council

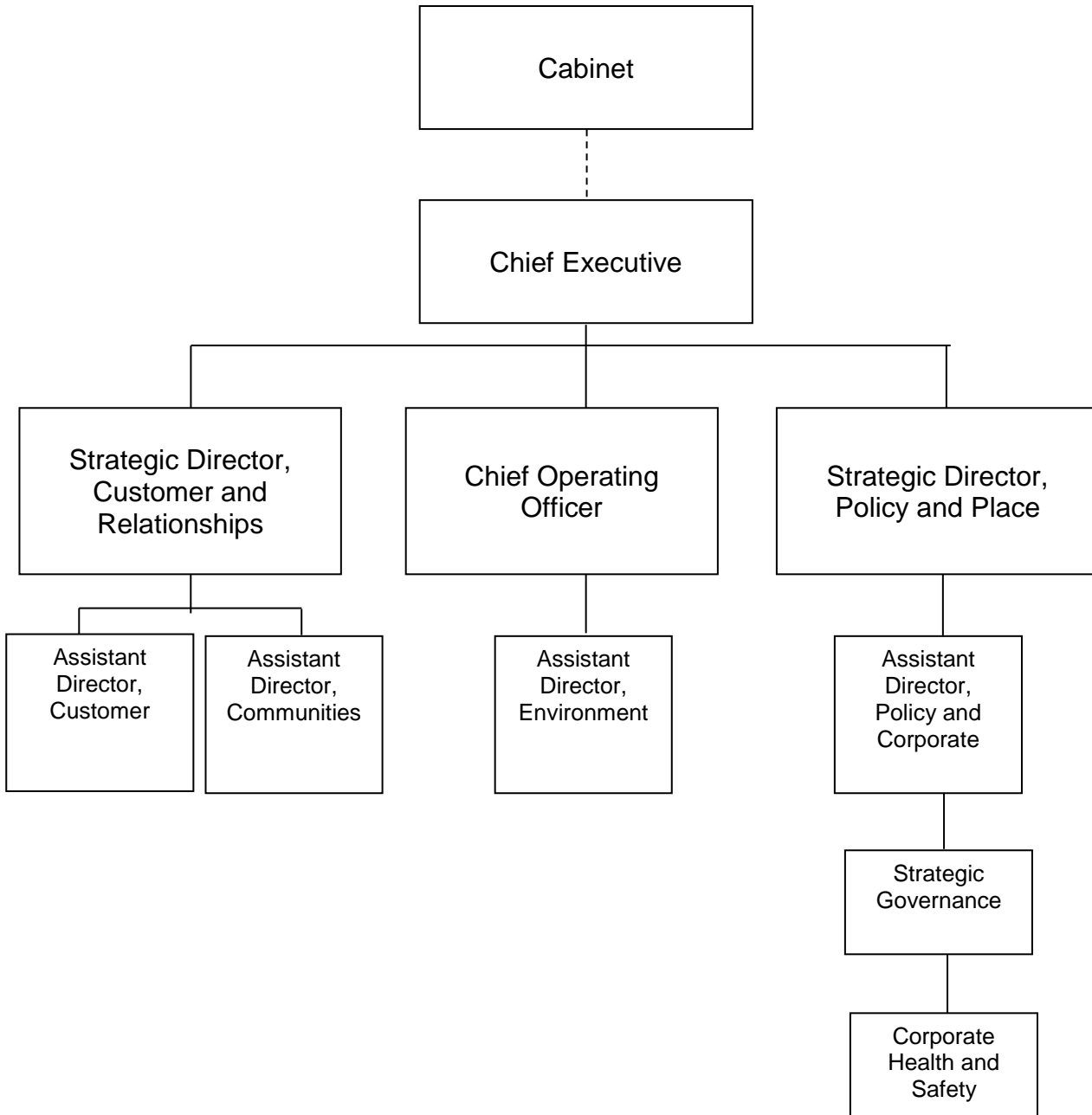
13 June 2018



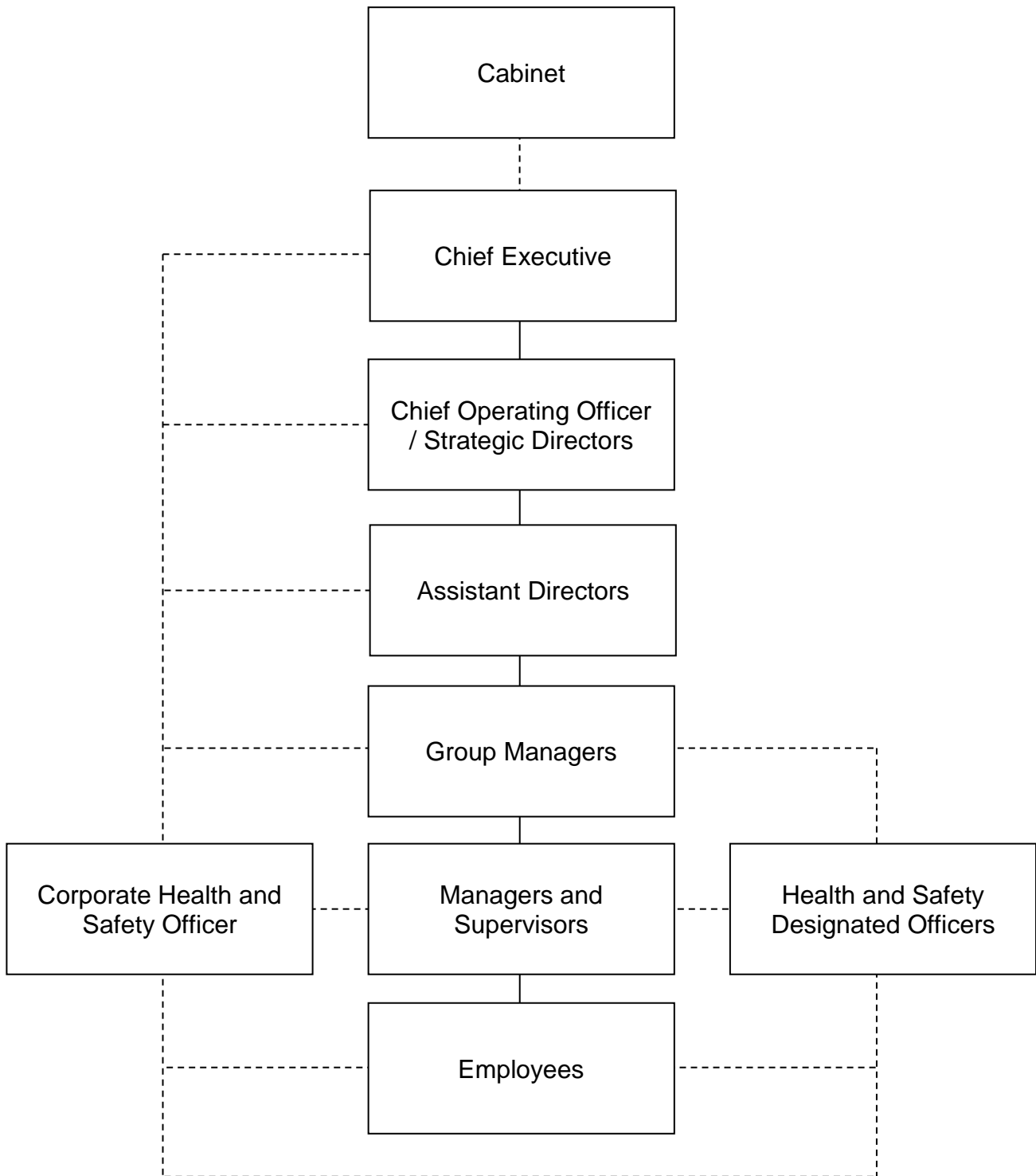
Adrian Pritchard
Chief Executive

3. ORGANISATION

3.1 Organisation Structure



3.2 Organisation Health and Safety Responsibilities



4. RESPONSIBILITIES

4.0 Leader of the Council and Cabinet

The Leader of the Council has the responsibility for the management and monitoring of health and safety provision across the whole of the Council's undertakings. Cabinet are jointly and severally the primary duty holders for health and safety across the Council's undertakings.

1. Ensure that adequate financial and other resources are provided, so that the health and safety policy can achieve its aims.
2. Give due regard to requests from the Chief Executive for financial and other resources to meet statutory duties and other obligations regarding health and safety management.
3. Ensure that the Chief Executive has in place an effective health and safety policy and management system, which will ensure that all health and safety hazards and risks within the Council are adequately controlled.
4. Require the Chief Executive to be able to confirm, during the reporting period; health and safety performance, any major incidents or failure in the health and safety management system, accident history and key improvements to health and safety that have been implemented.

4.1 Chief Executive

1. Overall responsibility for health and safety throughout the Council.
2. Support other duty holders to fulfil their health and safety responsibilities.
3. Preparation of an effective health and safety policy statement, organisation for carrying out that policy, measures for ensuring that it is implemented and communicated to all employees.
4. Ensure that this health and safety policy is reviewed, at least every three years or when circumstances otherwise dictate.
5. Ensure that health and safety is given an appropriately high priority and is not compromised, so putting employees or other persons at risk to their health and safety.
6. Ensure that the Executive Directors are aware of the health and safety policy and understand their responsibilities for effective health and safety management.
7. Ensure that the Executive Directors implement the policy through effective local arrangements and suitable monitoring arrangements.
8. Ensure that adequate financial and other resources are available to meet statutory duties and requirements of this health and safety policy.
9. Ensure that the Council has appointed a competent Corporate Health and Safety Officer for the purpose of advising on meeting its statutory duties and for advising and monitoring on health and safety.
10. Fulfil the responsibilities of the Executive Directors if services are under their direct management.
11. Set a personal example at all times with respect to health and safety.

4.2 Chief Operating Officer (with Responsibility for Health and Safety)

1. Support other duty holders to fulfil their health and safety responsibilities.
2. Accountable to the Chief Executive for health and safety within all Services.
3. Ensure that their Assistant Directors are aware of the health and safety policy and understand their responsibilities for effective health and safety management.
4. Provide leadership on health and safety and support and promote continuous improvement programmes.
5. Lead the provision and function of the health and safety committee.
6. Monitor health and safety performance at Executive Management Team through quarterly updates, an annual review and ensuring health and safety is an agenda item.
7. Ensure that there is sufficient financial or other resource for effective health and safety management and identify any short falls in resources that may negatively impact health and safety.
8. Provide support to the Corporate Health and Safety Officer and Health and Safety Designated Officers.
9. Ensure that if any serious health and safety occurrence or failure in health and safety occurs, the relevant person/s are held accountable for any deficiency in fulfilling their responsibilities under the health and safety policy and will be required to demonstrate to the Executive Management Team, remedial actions have been implemented to prevent a similar reoccurrence.
10. Set a personal example at all times with respect to health and safety.

4.3 Strategic Directors

1. Support other duty holders to fulfil their health and safety responsibilities.
2. Accountable to the Chief Executive for health and safety within their Services.
3. Ensure that their Assistant Directors are aware of the health and safety policy and understand their responsibilities for effective health and safety management.
4. Support and promote health and safety continuous improvement programmes.
5. Support the provision and function of the health and safety committee.
6. Monitor health and safety performance at Executive Management Team through quarterly updates, an annual review and ensuring health and safety is an agenda item.
7. Ensure that there is sufficient financial or other resource for effective health and safety management and identify any short falls in resources that may impact health and safety.
8. Ensure that if any serious health and safety occurrence or failure in health and safety occurs, the relevant person/s are held accountable for any deficiency in fulfilling their responsibilities under the health and safety policy and will be required to demonstrate to the Executive Management Team, remedial actions have been implemented to prevent a similar reoccurrence.
9. Set a personal example at all times with respect to health and safety.

4.4 Assistant Directors

1. Support other duty holders to fulfil their health and safety responsibilities.
2. Accountable to the Chief Operating Officer or Strategic Director for health and safety within their Services.
3. Ensure that their Group Managers are aware of the health and safety policy and understand their responsibilities for effective health and safety management.
4. Support the development, modification and delivery of a health and safety management system and ensure local process compliance.
5. Support and promote health and safety continuous improvement programmes.
6. Monitor and review health and safety processes and performance in their Services, and include appropriate health and safety actions within relevant strategies and business plans.
7. Ensure that there is sufficient financial or other resource for effective health and safety management and identify any short falls in resources that may impact health and safety.
8. Identify health and safety training needs for their Service and ensure this follows the health and safety training matrix and is in line with the Council and legislative requirements.
9. Ensure that their Group Managers have suitable and sufficient risk assessments in place to eliminate or control and reduce risks to acceptable levels including those required under relevant statutory provisions and ensure these are supported by method statements where required.
10. Ensure that for any premises under their direct control and management, adequate arrangements are in place for fire safety management and supported by a suitable and sufficient fire risk assessment completed by a competent person.
11. Ensure there is a process to employ competent contractors with the correct skills, knowledge, attitude, training and experience.
12. Ensure that all materials, plant, vehicles, equipment and personal protective equipment procured for use comply with legislation, commercial and any other specific standards which ensure that it is safe and without risk to health when used correctly.
13. Support the carrying out of regular health and safety audits and inspections and ensure the outcomes of these are completed within the agreed timescales.
14. Ensure that if any serious health and safety occurrence or failure in health and safety occurs, the relevant person/s are held accountable for any deficiency in fulfilling their responsibilities under the health and safety policy and will be required to demonstrate to the Executive Management Team, remedial actions have been implemented to prevent a similar reoccurrence.
15. Set a personal example at all times with respect to health and safety.

4.5 Group Managers

1. Support other duty holders to fulfil their health and safety responsibilities.
2. Accountable to the Assistant Directors for health and safety within their Services.
3. Ensure that their Managers and Supervisors are aware of the health and safety policy and understand their responsibilities for effective health and safety management.
4. Ensure compliance with the local health and safety management system by assigning levels of responsibility to relevant competent persons as required.
5. Support and promote health and safety continuous improvement programmes.
6. Monitor and review health and safety processes and performance in their areas of remit and ensure regular health and safety audits and inspections are carried out and outcomes of these are completed within the agreed timescales.
7. Ensure suitable and sufficient risk assessments are in place to eliminate or control and reduce risks to acceptable levels including those required under relevant statutory provisions and ensure these are supported by method statements where required.
8. Ensure that all accidents, incidents and near misses that are work-related or happen on council premises are reported using the online incident report form as soon as possible and no more than 5 days after the accident or incident and an appropriate investigation takes place promptly with remedial actions implemented to prevent a similar occurrence.
9. Ensure that all employees within their group have appropriate information, instruction and training that follows the health and safety training matrix and is in line with the Council and legislative requirements.
10. Ensure that competent contractors with the correct skills, knowledge, attitude, training and experience are employed.
11. Set a personal example at all times with respect to health and safety.

The following may also apply, depending on their specific responsibilities:

12. Ensure that for any premises under their direct control and management, adequate arrangements are in place for fire safety management and supported by a suitable and sufficient fire risk assessment completed by a competent person.
13. Ensure that workplace welfare, housekeeping and general safety requirements are effectively managed.

14. Ensure that all materials, plant, vehicles, equipment and personal protective equipment procured for use comply with legislation, commercial and any other specific standards which ensure that it is safe and without risk to health when used correctly.
15. Ensure that all plant, vehicles and equipment is adequately maintained and subjected to statutory examinations where appropriate and relevant records are kept.
16. Ensure that all employees within their group are provided with the correct level of personal protective equipment as identified by risk assessments and that it is maintained or replaced when necessary.
17. Ensure that arrangements are implemented in respect to the requirements of the Construction (Design and Management) Regulations 2015.
18. Ensure health and safety is considered during tender of new contracts and contractors employed are competent with suitable health and safety arrangements in place. Monitor and review contractors' health and safety processes and performance.

4.6 Managers and Supervisors

1. Support other duty holders to fulfil their health and safety responsibilities.
2. Accountable to their Group Manager for health and safety within their Services.
3. Read, understand and implement the requirements of the health and safety policy and health and safety management system.
4. Support and promote health and safety continuous improvement programmes and regularly communicate with employees on health and safety issues.
5. Monitor and review health and safety processes and performance in their areas, teams and premises and ensure regular health and safety audits and inspections are carried out and outcomes of these are completed within the agreed timescales.
6. Ensure that the requirements of risk assessments and method statements are implemented, in place during work and communicated to all employees within their team.
7. Ensure that all employees within their group have appropriate information, instruction and training that follows the health and safety training matrix and is in line with Council and legislative requirements.
8. Not to put any person at an unacceptable risk during the course of work and stop work where any new hazards are identified until the risk has been assessed and controlled and if required reduced to an acceptable level.
9. Ensure that all plant, vehicles and equipment are adequately maintained so it is safe for use and any defective plant, vehicles and equipment is withdraw from use immediately.
10. Ensure that all employees within their team have the correct level of personal protective equipment as identified by risk assessments and that it is maintained or replaced when necessary.
11. Receive, review and remedy any concerns in respect to health and safety. When concerns cannot be resolved at a local level, they shall be referred to the Group Manager and if still unresolved to the Corporate Health and Safety Officer.

4.7 Corporate Health and Safety Officer

1. Support other duty holders to fulfil their health and safety responsibilities.
2. Review, develop and communicate the health and safety policy and management system in conjunction with other responsible duty holders.
3. Provide competent advice in relation to all health and safety matters and ensure duty holders are kept up-to-date on all relevant health and safety issues.
4. Ensure own competence is maintained through continual professional development.
5. Identify key health and safety training needs and advise on methods of implementation and delivery.
6. Provide a pro-active resource for the development and delivery of health and safety inspections and audits on an agreed programme basis.
7. Provide a reactive resource for the reporting, recording and investigating of accidents and incidents and provide statistical information to the health and safety committee.
8. Provide corporate safety initiatives and ensure there is a continual improvement programme for effective health and safety management and advise on the implementation of programmes.
9. Attend health and safety committee meetings and other relevant health and safety groups and provide guidance and advice where required.
10. Review the performance of health and safety within the Council as a whole, in conjunction with the Executive Management Team.
11. Provide a report to the Executive Management Team on a regular basis which details health and safety performance and update the Executive Director with health and safety responsibilities on all significant health and safety matters.
12. Ensure there is a continual improvement programme for effective health and safety management.
13. Provide a useful and relevant information service, with documents to assist others with their duties and ensure information is updated on a regular basis.
14. Communicate with and provide support, direction and guidance to Health and Safety Designated Officers and ensure they provide support on health and safety matters to duty holders within their area of remit in accordance with their responsibilities.
15. Support duty holders with enforcement agency requests for information, visits and inspections and if required, be the primary point of communication with relevant enforcement agencies.
16. Set a personal example at all times with respect to health and safety.

4.8 Designated Officers for Health and Safety

1. Support other duty holders within their areas of remit to fulfil their health and safety responsibilities.
2. Read, understand and implement requirements of the health and safety policy and health and safety management system.
3. Be the initial point of contact for health and safety guidance to colleagues and managers in their service area and refer to the Corporate Health and Safety Officer for advice and guidance as appropriate.
4. Support and promote health and safety continuous improvement programmes and regularly communicate with employees on health and safety issues, encouraging suggestions for improvement from colleagues and encourage them to report any health and safety concerns.
5. Attend all health and safety committee meetings or ensure that a suitable deputy attends if unavailable and prepare a report as required.
6. Support other duty holders ensuring that all employees within their responsibility have appropriate information, instruction and training that follows the health and safety training matrix and is in line with legislation.
7. Carry out health and safety review and monitoring as agreed with the Corporate Health and Safety Officer and ensure regular health and safety audits and inspections are carried out and outcomes of these are completed within the agreed timescales.
8. Set a personal example at all times and act as an ambassador with respect to health and safety.

Managers, at all levels, are responsible for the health and safety of their team - this cannot be delegated. However the Designated Officers can support and assist Managers with meeting their obligations.

4.9 Employees

1. Support other duty holders to fulfil their health and safety responsibilities.
2. Read, understand and comply with the requirements of the health and safety policy and health and safety management system.
3. Take reasonable care of the health and safety of themselves and others who may be affected by their acts and or omissions.
4. Work safely at all times, in accordance with the information, instruction, training, risk assessments and method statements provided.
5. Use the correct plant, vehicles, equipment and materials for tasks and keep them in good condition and never use anything for which it is not intended or they are not trained or competent to use.
6. Comply with all safety control measures appropriately, including any personal protective equipment issued and never intentionally or recklessly interfere with or misuse anything provided in the interest of health and safety.
7. Attend and participate in all training provided in the interest of health and safety.
8. Report immediately to their Manager or Supervisor any accidents, incidents, verbal abuse, near misses, occupational diseases and health and safety concerns, including defects to personal protective equipment, plant, vehicle, equipment and material, and any hazards or risks believed to be inadequately controlled.
9. Set a personal example at all times with respect to health and safety.

5. DOCUMENT INFORMATION

Title:	Health and Safety Policy
Status:	Final
Version:	9 - October 2019
Consultation:	SMT, Health and Safety Committee, and Unison
Approved By:	SMT and Governance and Audit Committee
Approval Date:	October 2019
EQIA:	Yes - link
Review Frequency:	Annually or if change occurs (and a comprehensive review every three years)
Next Comprehensive Review:	October 2020

5.1 Document Control

Date	Version	Description	Sections Affected	Approved by
September 2015	1	Initial draft	All	
April 2016	2	Updated draft. Moved arrangements to separate document.	All except 1 and 2	
June 2016	3	Updated following SMT meeting.	4.0 and 4.9	SMT
July 2016	4	Final draft version - Signatures added	2	Leader of Council and Chief Executive
August 2016	5	Minor amendments following Unison consultation. Final version.	2, 4.1, 4.3, 4.4, 4.5,	Unison and Executive Director
October 2016	6	Review and endorse the revised Health and Safety policy for 2016/17.	All	Governance and Audit Committee
October 2017	7	Annual review. Organisation structure and job titles updated. Minor amendments to improve comprehension.	All	Corporate Health and Safety Officer
June 2018	8	Updated statement with new leader's signature to approve commitment. Updated structure to include Commercial.	2, 3.1	Corporate Health and Safety Officer, and Leader of Council and Chief Executive
October 2018	8.1	Approved Policy for 2018/19	None	Governance and Audit Committee

October 2019	9	Approved Policy for 2019/20	3.1, 4.2	Governance and Audit Committee
--------------	---	-----------------------------	----------	--------------------------------



Health and Safety Arrangements

These health and safety arrangements detail what the Council will do in practice to achieve the aims set out in the health and safety policy and how we will eliminate or reduce the risks of hazards.

This document will assist managers fulfil their responsibilities set out in the health and safety policy by identifying key elements and providing guidance for practical management of health and safety.

Statutory requirements, Council requirements and industry best practice are identified within the arrangements; however these may not be exhaustive and only provide a generic guide to health and safety. Every service, location and activity is different so must be adapted to the relevant circumstances and additional risks and controls must be considered.

Further information on most health and safety topics can be found on the Council intranet:
[Staff Handbook – Health and Safety Overview \(Policy, Arrangements and Management System\)](#)
[Staff Toolkit – Health and Safety \(Information, Guidance, Forms, etc.\)](#)

Carl Free, the Corporate Health and Safety Officer can be contacted for further health and safety advice on: 01206 506579 or carl.free@colchester.gov.uk

Table of Contents

1 Audit & Review.....	3
3 Employee Consultation	4
4 Employee Welfare.....	5
5 Risk Control	9
6 Induction and Training	11
7 Accident and Incident Reporting and Investigation.....	13
8 Emergency Arrangements.....	14
9 Workplace Safety	15
10 Company Vehicles.....	18
11 Hazardous Substances	19

1 Audit & Review

1.1 Audit

An audit is a structured and objective process of collecting information in order to assess whether the system for safety management is working effectively.

Audits of services or arrangements are completed quarterly where possible by the Corporate Health and Safety Officer. In addition, quarterly inspections of all council corporate workplaces are completed by Designated Officers or responsible persons. An action plan is then produced and handed to the relevant managers. Reports on audits and inspections are presented at the health and safety committee and within the annual and half yearly health and safety report presented at SMT.

1.2 Review

Reviews are necessary to ensure that policies and procedures are kept up to date. We review these whenever any of the following circumstances occur:

- Changes in legislation
- Changes to work processes
- On the introduction of new equipment
- Where there are changes to personnel
- After an incident

If none of the above occur, then all policies and procedures are reviewed and updated on an annual basis.

3 Employee Consultation

Colchester Borough Council recognises its duties under The Health and Safety (Consultation with Employees) Regulations 1996 and the Safety Representatives and Safety Committees Regulations 1977.

It is the policy of Colchester Borough Council to consult with all employees over health and safety matters. We will provide all new employees with a copy of this Health and Safety Policy during their induction and publish it on the staff intranet known as 'COLIN'.

There is a health and safety committee within the Council which sits on a quarterly basis and is attended by staff and union representatives. Information is then disseminated to staff through the Designated Officers for Health and Safety. In addition, committee minutes are published online.

If we intend to make any changes to processes, procedures or equipment that may affect the health and safety of employees and contractors, we will consult with them before doing so.

We operate an open door policy with regards to reporting any concerns or suggestions for improvement and actively encourage this within the Council. Where an employee has made a comment regarding the health and safety of the company, the Health and Safety Officer will investigate and action accordingly.

4 Employee Welfare

4.1 Facilities

The Workplace (Health, Safety and Welfare) Regulations 1992 require that suitable welfare facilities are in place for employees. We provide and maintain the following for our staff:

- Toilets with hand washing facilities that have running hot/warm water
- Canteen areas with rest facilities and a means of preparing food
- Storage facilities for belongings where practicable.
- A supply of wholesome drinking water

Local arrangements are detailed during initial inductions to the Council.

4.2 Drug and Alcohol Policy

We are committed to providing a safe and healthy working environment for our staff and others. If staff are prescribed medication that may affect their ability to work safely, they should report this to their Manager. The Council's Drug and Alcohol Policy is under review. Additional information is provided in the Disciplinary Rules and Procedures.

4.3 Smoking

We prohibit smoking in all workplaces including company vehicles. More information is contained in the Smoking Policy. Local arrangements are explained by managers as part of the corporate health and safety induction.

4.4 Occupational Stress

We recognise that workplace stress is a health and safety issue and acknowledge the importance of identifying and reducing workplace stress. We will monitor the workload and working hours of employees to ensure that they do not become overloaded.

We encourage all employees to discuss any issues that are concerning them. The Council has a Stress Policy and all employees are encouraged to report any concerns of stress.

There is information for Managers on COLIN which can help them to identify signs of occupational stress so that they can act accordingly.

The Council runs an Employee Assistance Programme through Workplace Options who offer personal support and advice on wellbeing, family matters, relationships, debt management, workplace issues, consumer rights etc. All employees are encouraged to use this service which is free of charge.

4.5 Violence, Discrimination and Harassment

Workplace violence is defined as verbal and physical abuse, including threatening behaviour and assault. This can occur amongst staff or between staff and customers. The Council has a Bullying and Harassment Policy.

The Council condemns all forms of discrimination and harassment and will not tolerate such acts. Disciplinary action will be taken should this occur within the workplace and all concerns should be reported immediately to Managers or Supervisors.

Due to the work carried out, we recognise that employees may at times encounter members of the public who act aggressively towards them. Whilst we take precautions and train our staff to diffuse these situations, unfortunately, they can occur. If a potentially violent incident occurs we ask employees to complete our electronic incident report form so that we can monitor and investigate such incidents accordingly. Once investigated, the manager will then ensure that a suitable resolution is implemented in order to support the member of staff concerned.

We also operate a Cautionary Contact Register (CCR) which contains the details of all members of the public who have behaved in a threatening manner towards Council employees. If employees encounter an individual who behaves in such a manner, they are advised to complete a Cautionary Contact Incident Report Form. This form is then reviewed by the CCR panel to decide whether details of the individual concerned should be entered onto the CCR following a process as described in the CCR Policy.

4.6 Lone Working

Lone working is discouraged wherever possible, but due to the services we carry out, we recognise that this is not always avoidable. As we have many employees who work alone, we operate a lone worker personal monitoring alarm system called 'Skyguard'.

Services with employees who lone work must complete a risk assessment to identify the hazards and risks to lone workers and remove or reduce the risks to a suitable level through appropriate control measures.

Employees are encouraged to be aware, trust their instincts, not ignore warnings, be alert, confident and keep fit, to aid self-protection.

Any physical assault or verbal abuse (above an individual's threshold) to employees must be reported using the online incident reporting form and an investigation carried out by the manager.

As part of the reporting process, the perpetrator can be nominated by the investigating manager for inclusion on the Cautionary Contact Register (CCR).

Further information and guidance is available on the Intranet.

4.7 Personal Protective Equipment

Where a risk assessment has identified that PPE is necessary as the last resort to further control an identified hazard, this will be provided free of charge to all employees.

PPE supplied must comply with the new PPE Regulation 2016/425, and it should have: the relevant EU Type Examination Certification, a Declaration of Conformity, the user instructions supplied in the correct language, CE marked, or a 'BSI Kitemark' which demonstrates that it was tested to and meets a 'published standard'.

Managers must ensure that suitable PPE is provided to all staff members who require it, and that the person knows how to use and store this correctly as well as the procedure for reporting defects.

Once defects are reported, the Manager must ensure that PPE is repaired or replaced before the employee requires it again.

Employees are reminded to use all PPE as instructed and not to interfere with any provisions that have been made with respect to health and safety.

4.8 Workplace Temperature and Extreme Weather

During working hours, the temperature in all workplaces inside buildings shall be reasonable, which depends on work activity and the environmental conditions, however should be at least 16°C, or 13°C if much of the work involves rigorous physical effort.

There is no maximum temperature in the workplace, however the thermal environment should satisfy the majority of people in the workplace and provide thermal comfort (generally between 13°C and 30°C with acceptable temperatures for more strenuous work activities concentrated towards the bottom end of the range, and more sedentary activities towards the higher end).

If thermal discomfort is a risk, and employees are complaining and/or reporting illnesses that may be caused by the thermal environment, managers will review and implement appropriate controls to manage the risks.

Upon heatwave alert from Public Health England (temperatures of 30°C during the day and 15°C at night) additional controls must be considered by managers;

- Reschedule work so staff can stay out of the sun 11am to 3pm (ensuring an 11 hour break between working days)
- Provide more frequent rest breaks and introduce shading to rest and working areas or cooler facilities inside
- Provide specialised personal protective equipment designed for use in heat and/or encourage the removal of personal protective equipment when safe to do so or resting to help encourage heat loss
- Remind staff about recognising the early symptoms of heat stress and how to reduce the risk
- Identify staff who are more susceptible to heat stress (due to an illness, condition, pregnancy, or medication)
- Monitor the health of staff at risk and measure heat stress

Outdoor workers could be at risk of too much sunlight which is harmful to skin, it can cause skin damage including sunburn, blistering and skin ageing and in the long term can lead to an increased risk of skin cancer. Sunscreen and guidance will be provided to staff at risk.

Risk Assessments will include controls for the risk and effects of extreme weather to outdoor workers. The Corporate Health and Safety Officer (in liaison with the Resilience Officer and First Call Officer) will further advise managers in situations of widespread or long term extreme weather.

5 Risk Control

5.1 Risk Assessment

Risk assessments are completed for all reasonably foreseeable risks that may cause harm to staff and anyone else who may be affected by their services and activities.

Managers should record these on the risk assessment template and can use the generic/model risk assessments on the intranet as appropriate, which are then made specific for their particular situation, hazards and risks.

Appropriate control measures are put in place to reduce risks as far as reasonably practicable, using the generally accepted hierarchy of control: Eliminate, Reduce, Isolate, Control, Personal Protective Equipment or Discipline (information, instruction, training and supervision).

Managers complete a Control of Substances Hazardous to Health (COSHH) assessment for all hazardous substances found in the workplace, using the COSHH assessment template available on the intranet.

Fire Risk Assessments are completed for Council corporate/operational workplaces (where staff are located or primarily used for Council business).

Risks assessments must be up to date, and are reviewed regularly, or if there is new equipment, substances and procedures that could lead to new hazards. Managers also review risk assessments if there have been any significant changes, there are improvements still to be made, if workers have reported concerns or accidents and near misses have occurred.

Relevant risk assessments are communicated to staff during their induction, and when any significant changes have been made.

5.2 Hot Work Permits

A 'Hot Work Permit' is required for any temporary hot work operation involving open flame or producing heat and/or sparks. This includes but is not limited to welding (gas or electric arc), cutting (gas or electric arc), brazing and grinding. The requirement for a permit applies equally to staff and to contractors.

Permits are only granted by an authorised person (Corporate Health and Safety Officer, Health and Safety Designated Officer or Facilities Responsible Person) after they are satisfied the appropriate arrangements are in place to minimise the risk of fire where the work is to be carried out and cancelled once there is no longer a risk of fire.

The necessary precautions are described on our generic/model permit which is available on the intranet.

5.3 Method Statements

Where a risk assessment shows that risks can be reduced further if a set way of working is in place, a method statement will be written by the relevant Manager or Health and Safety Designated Officer.

This document sets out a step by step approach to the task and must be followed in order to ensure that a task is carried out in a safe manner.

Examples method statements are available on COLIN as a guide for Managers needing to complete these for the tasks that workers carry out.

6 Induction and Training

6.1 Inductions

All new employees complete an Induction Checklist with their manager on their first day, which includes important health and safety information such as:

- Corporate Health and Safety Information
- Risk Assessments and Method Statements
- Personal Protective Equipment
- Emergency Arrangements
- First Aid and Welfare Facilities
- Training
- Accident, incident and near miss Reporting
- Reporting Health and Safety concerns and obtaining advice

6.2 Training

Appropriate health and safety training is provided to staff free of charge. Appropriate training may be helping staff to learn how to do something, telling them what they should or should not do, or simply giving them information or instructions, and is not just about formal 'classroom' course. However, for higher risks appropriate training may be extensive, technical courses with formal assessment and qualification.

Risk Assessments must identify any further training needs associated with specific risks and legal requirements for jobs or tasks.

Refresher training is provided as necessary. Managers must consider if further staff training, and the need to highlight any new health and safety implications if new equipment, technology or changes to ways of working are introduced.

A health and safety training matrix is in place which details mandatory health and safety training for all employees (which includes the 'Corporate Health and Safety Induction' course) and recommended training for specific services/employees.

Mandatory training is provided by the Corporate Health and Safety Officer and recommended training is provided or supported as decided by the Corporate Health and Safety Officer. Managers are responsible for providing appropriate and recommended training within their services, and ensuring staff are appropriately trained.

Further information and guidance is available on the intranet.

6.3 Supervision

All new employees are supervised when they first join the Council. Ongoing supervision is then carried out by Managers and Supervisors as appropriate, taking into account the individual and those who work away from direct management/supervision.

Supervision can help monitor the effectiveness of training and whether staff have the necessary capacity and competence for the job.

Contractors have their own legal health and safety responsibilities, but will also be supervised appropriately, proportionate to the task and their familiarity with the location, its procedures, hazards and risks.

6.3 Young Person (under 18)

A Young Person Risk Assessment is completed by Managers for any new young people (under 18), consideration is also given to those who are inexperienced or first language is not English.

7 Accident / Incident Reporting and Investigation

Once an accident / incident has been reported we will:

- Take prompt emergency action (contact emergency services, first aid, etc.)
- Make the area safe (in some cases this may need to be done first)
- Preserve the scene for investigation

An online Incident Report Form (IRF) will be completed for every accident/incident, near miss, verbal abuse (including threats), physical assault or dangerous occurrence that occurs. This applies to incidents involving employees, volunteers, work experience etc. carrying out Council work and members of the public, contractors, etc. on Council property or land.

We actively encourage all staff to report near misses in the workplace using the IRF or 'near miss report card', so we can investigate and identify potential failings or improvements helping prevent future incidents and injuries.

Incidents will be submitted on the IRF as soon as possible and no more than five days after the incident. If the injury is specified (serious / major) or fatal, then the Corporate Health and Safety Officer will be informed without delay.

Managers will complete a health and safety investigation as soon as possible for all incidents. The investigation effort (time and cost) should be relative to the incident severity. Investigation findings and an action plan where necessary to help prevent reoccurrence will be recorded on the IRF.

The Corporate Health and Safety Officer will notify the Health and Safety Executive (HSE) of reportable incidents under Reporting of Injuries, Diseases, and Dangerous Occurrences Regulations (RIDDOR). The HSE will be notified without delay and within 10 days of the incident, or within 15 days for an incident resulting in over 7 day incapacitation. Incidents resulting in 3 to 7 incapacitation are recorded for information only.

The appropriate Manager/s, Group Manager and Senior Management Team (SMT) will receive a summary of the incident, investigation findings and actions, and copy of the completed IRF and F2508.

The Corporate Health and Safety Officer will monitor reported incidents to identify trends and concerns, and report to SMT on a regular basis.

8 Emergency Arrangements

8.1 Fire Safety

The Chief Executive recognises his duties as overall Responsible Person for Colchester Borough Council under the Regulatory Reform (Fire Safety) Order 2005.

A fire risk assessment has been carried out for all Council 'Corporate' premises. These are held at each site within the Fire Log Book. We carry out a review of these whenever any significant changes are made to building layouts or processes carried out in them.

All fire protection measures are inspected and serviced in line with regulatory requirements. This is managed at each premises by the Health and Safety Designated Officer or respective Manager for the site.

Our emergency arrangements are made known to our employees during induction and are displayed at conspicuous places throughout each place of work. This information is also communicated to all contractors and visitors to our buildings.

We have designated incident controllers and fire marshalls for each of our sites. These people are trained to carry out this role and we carry out fire drills on a regular basis to ensure that the arrangements remain effective.

8.2 First Aid

Colchester Borough Council recognises its duties under the First Aid Regulations 1981 to supply adequate and appropriate first aid equipment, facilities and people to assist in an emergency. Each place of work has dedicated first aiders. Their details are included in the inductions carried out for all new starters. Should this person change, updated information will be communicated as appropriate.

The Health and Safety Designated Officers or nominated persons for each site are responsible for ensuring there is suitable and sufficient first aid supplies monitoring and re-stocking first aid supplies. Employees are encouraged to inform them if stocks need replenishing.

9 Workplace Safety

We will ensure that all our workplaces (corporate buildings) are safe for our staff and anyone else who may visit our premises or use our services, with safe means of access and egress, and ensure that adequate welfare facilities are provided for people at work.

Colchester Borough Homes (CBH) are responsible for the planned and responsive maintenance and asset management of 'Corporate' buildings, and will act as the 'responsible person' for Legionella and Asbestos management.

We will report matters to CBH management, concerning repairs to or structural defects of these workplaces which may impact health and safety.

Managers named as the 'responsible person' will monitor to ensure suitable health and safety management and statutory inspections are completed within their workplaces.

9.1 Electrical Equipment

The Electricity at Work Regulations 1989 requires that all portable electrical equipment is checked at regular intervals. We encourage all staff to check electrical equipment before use and to take out of service and report any defective equipment.

We will ensure that all portable electrical equipment is maintained along the following guidelines, as suggested by the Health and Safety Executive:

Equipment	User Check	Formal Visual Inspection	Combined Inspection and Testing
Battery operated items less than 40 volts	No	No	No
Low voltage items such as telephone equipment	No	No	No
Display screens Desk top computers	No	Yes: 2 – 4 years	No if double insulated, otherwise up to 5 years
Photocopiers Fax machines (not hand held & rarely moved)	No	Yes: 2 – 4 years	No if double insulated, otherwise up to 5 years
Class II Double insulated equipment: Fans Table Lamps (not hand held & moved occasionally)	No	Yes: 2 – 4 years	No
Class II Double insulated equipment: Floor Cleaners Hand held & mobile	Yes	Yes: 6 months – 1 year	No
Class I earthed equipment: Kettles Kitchen equipment Irons	Yes	Yes: 6 months – 1 year	Yes, 1 – 2 years
Cables, leads & plugs connected to the above equipment Mains voltage extension leads	Yes	Yes: 6 months – 4 years dependant on the type of	Yes, 1 – 5 years depending on the type

Battery charging equipment		equipment it is connected to	of equipment it is connected to
----------------------------	--	------------------------------	---------------------------------

9.2 Workstations and Display Screen Equipment

All staff classed as DSE users (those who regularly use DSE as a significant part of their normal work - daily, for continuous periods of an hour or more) must complete the DSE Workstation Assessment Form during their induction, with the assistance of their manager to ensure that their desk / workstation is set up correctly. All DSE users should then adopt the same principles when hot desking, taking a few moments to ensure their workstation is correctly set up or adjusting as required.

DSE users are encouraged to take regular breaks from looking at their screen and/or sitting, such as 10 minutes every hour, or micro breaks more regularly.

DSE users who substantially change their workstation (or the way it is used), or suffer from pains or discomfort believed to be caused or made worse by working with display screen equipment, must inform their manager and complete a new DSE Workstation Assessment. This helps ensure their workstation is set up correctly and should highlight the areas of concern.

DSE users suffering from pains or discomfort with a correctly set-up workstation or those with pre-existing medical conditions that may be affected by DSE use, must inform their manager, who should seek assistance from the Corporate Health & Safety Officer and/or Occupational Health. The Corporate Health & Safety Officer may visit the user at their workstation to assess and suggest reasonable adjustments if necessary (such as a monitor stand, taking regular breaks or a specialist chair).

Copies of completed DSE assessments must be kept by the manager for three years for possible future reference.

DSE users are entitled, on request, to receive an eye and eyesight examination. Colchester Borough Council will contribute the full costs of the eye and eyesight examination and up to £45 towards glasses prescribed solely for DSE use.

Further information and guidance is available on the intranet.

9.3 Work Equipment

In line with the requirements of the Provision and Use of Work Equipment Regulations 1998, all equipment used in the workplace will be selected for its suitability for the tasks required and will be used and maintained in accordance with the manufacturer's instructions.

Risk Assessments are completed for equipment used in the workplace by managers.

Users are required to carry out a visual check before using any equipment. Where they have concerns over the safety of the equipment, they are to report this immediately to their Manager or Supervisor and take the equipment out of circulation until it has been assessed.

Where any work equipment is hired, we will ensure that this is accompanied by the relevant inspection records to show that it is safe to use.

9.4 Noise and Vibration

We recognise that some equipment used by employees creates noise and vibration which needs to be controlled. Employees are given instruction on the correct use of machinery to reduce noise emissions and are provided with the information gained from risk assessments.

Where the risk assessments identify that PPE is required to further reduce risk, we provide employees with the necessary items and will monitor the use. We encourage employees to raise any concerns they may have about using this type of equipment and will investigate this accordingly.

9.5 Work at Height

Council employees may have to work at height in their activities. They are required to work in accordance with our risk assessments and to use all access equipment in accordance with the training that they have been given.

All access equipment owned by the Council is inspected as required to ensure it is fit for purpose. Anyone using a ladder is required to visually check it for any damage before use. If damage is found they are to take this out of use, label it accordingly and report this to their Manager or Supervisor.

9.6 Manual Handling

Hazardous manual handling operations must be avoided so far as is reasonably practicable, by redesigning the task to avoid moving the load or by automating or mechanising the process.

If hazardous manual handling operations cannot be avoided, managers must complete a suitable and sufficient risk assessment of the risk of injury, ensuring the task, individual, load and working environment is considered.

The risk of injury must be reduced so far as is reasonably practicable. Where possible, manual handling aids / mechanical assistance must be provided, for example, a sack trolley or hoist. Where this is not reasonably practicable then changes to the task, the load and the working environment are explored.

Staff must: follow training and systems of work in place for their safety, use equipment provided for their safety properly, cooperate on health and safety matters, inform their manager if they identify hazardous handling activities, and take care to make sure their activities do not put others at risk.

Further information and guidance is available on the intranet.

9.7 Housekeeping

We encourage all employees to maintain a clean working area and to keep all walkways free from belongings and other items. Bins are provided for all rubbish and employees are encouraged to regularly clear their work areas.

We endeavour to keep all external routes clear and to dispose of rubbish in the appropriate manner.

10 Company Vehicles

The Council publishes a Vehicle User's Handbook which incorporates the Driving for Work Policy. In addition, it provides guidance for those employees who operate a Council owned vehicle.

The Council has a Fleet Working Group which meets on a regular basis to discuss the way in which vehicles are operated throughout the Council.

We ensure that all our vehicles are insured, taxed and have a valid MOT where applicable.

It is standard policy for all drivers to have a break of 45 minutes when driving for any 4.5 hour period.

All new staff should provide their driving licence and the Council will ask to see this on an annual basis. Staff are required to present their driving licence should anything change within this interval. Any employees who drive company vehicles should report any situations which may have an effect on their ability to drive, such as the use of medication that causes drowsiness.

11 Hazardous Substances

We recognise our duties under relevant legislation and have the following procedures in place to satisfy the requirements:

11.1 Asbestos

The majority of asbestos within Council owned buildings was removed as part of an initiative in 2004.

Where this has been left in situ, it has undergone an asbestos management survey from which an asbestos register has been developed. A management survey assesses the condition of any remaining asbestos for normal occupation of the building. Any contractors who arrive to carry out work in our buildings are required to read the register which is held at reception for individual premises and sign to confirm that they understand where asbestos is located. Before any work is carried out that affects the fabric of a building, a refurbishment and demolition survey is carried out which identifies the exact location so that it can be dealt with appropriately.

11.2 Substances Hazardous to Health

The Control of Substances Hazardous to Health 2002 requires employers to make assessments of the risk to the health and safety of employees when using hazardous substances.

COSHH assessments are carried out for all hazardous substances used in the workplace. COSHH assessment templates are available on COLIN for Managers to use and amend to the specific requirements for their members of staff.

11.3 Biological Hazards

Due to the work carried out by some of our employees, it is likely that at some point they may come into contact with biological hazards. The principal identified hazards being bird droppings, discarded needles, rats and animal faeces. These matters are taken into consideration when risk assessments are carried out by the relevant managers and appropriate personal protective equipment is issued where required.

11.4 Legionella

Legionella is managed in all corporate buildings by Colchester Borough Homes. All buildings have been subject to a water hygiene risk assessment and have a scheme for control in place.