

Figures

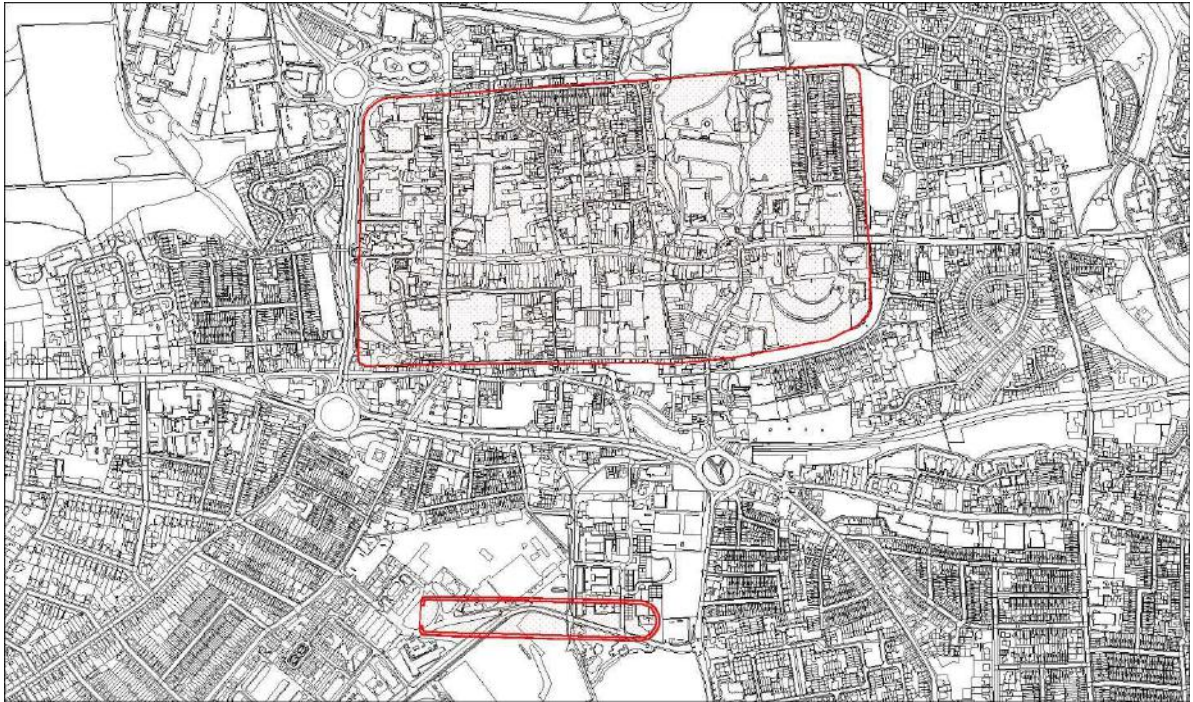


Figure 1: Location of Roman Circus in relationship to the walled town (and superimposed on the modern town).

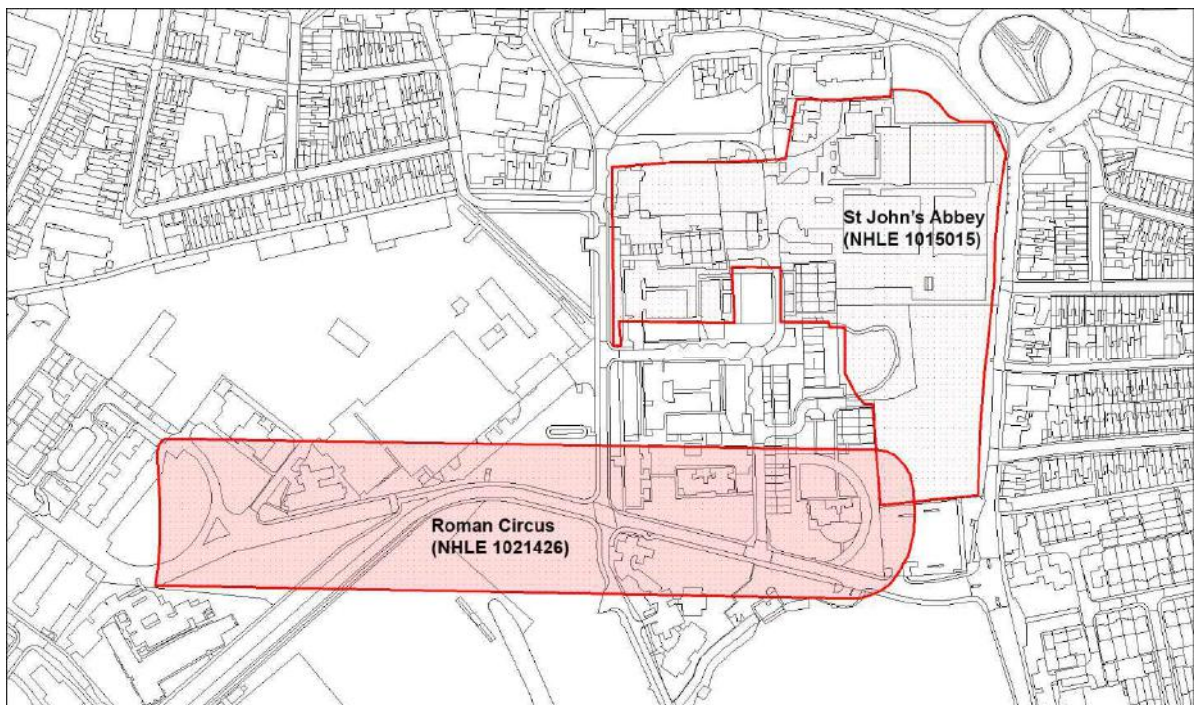


Figure 2: Scheduled Monuments, 'Roman Circus 200m south of Abbey House' ([NHLE no. 1021426](#)) and the 'Benedictine Abbey of St John' ([NHLE no. 1015015](#)).

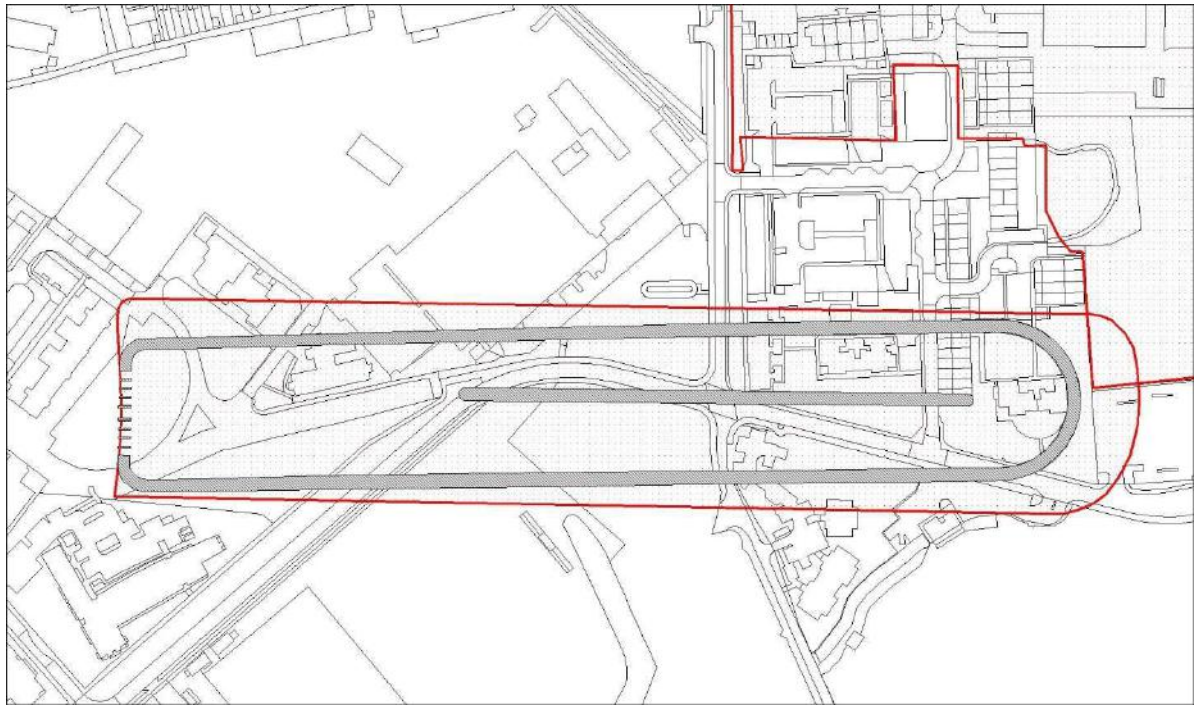


Figure 3: Roman Circus (in grey) in relationship to the Scheduled Monument, 'Roman Circus 200m south of Abbey House' ([NHLE no. 1021426](#)) (in red).

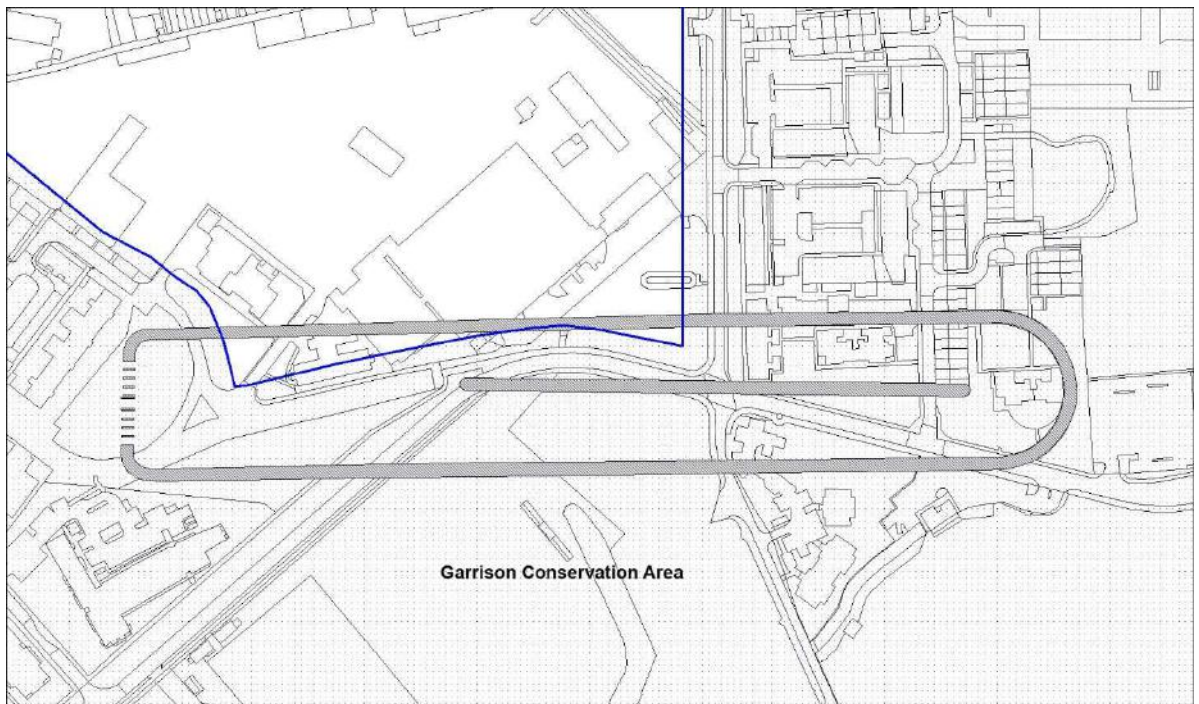


Figure 4: Roman Circus in relationship to the Garrison Conservation Area (in blue).

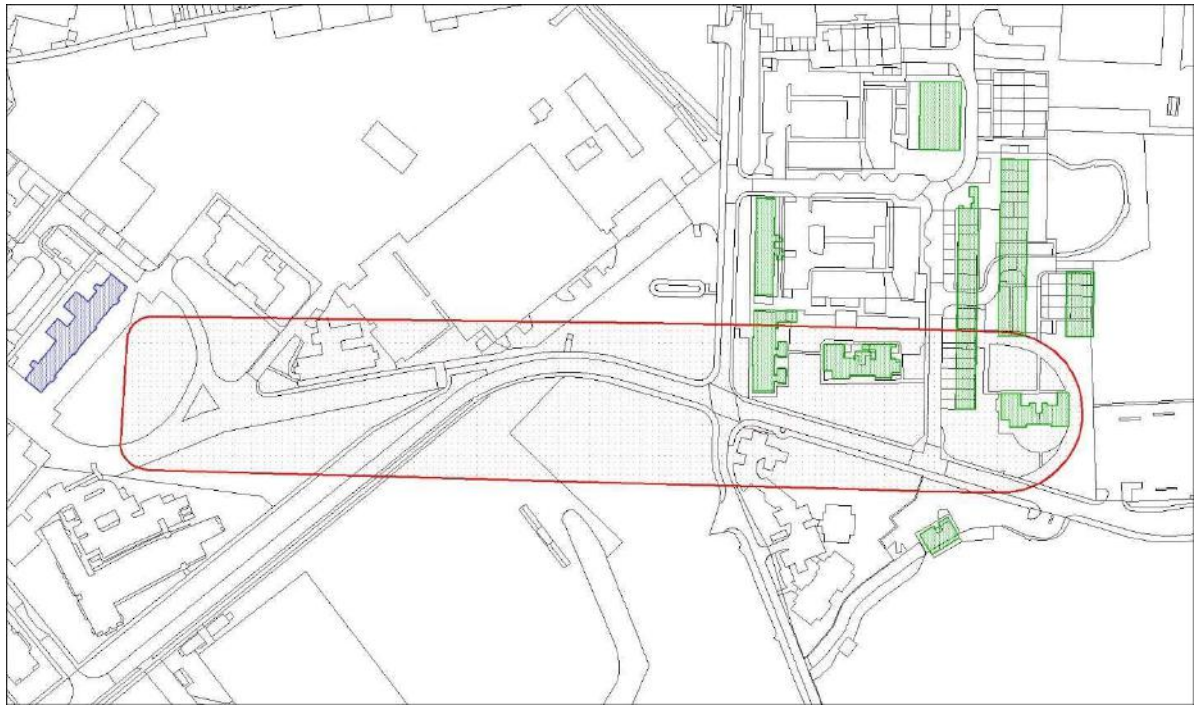


Figure 5: Roman Circus in relationship to the Listed (blue) and Locally Listed (green) buildings.

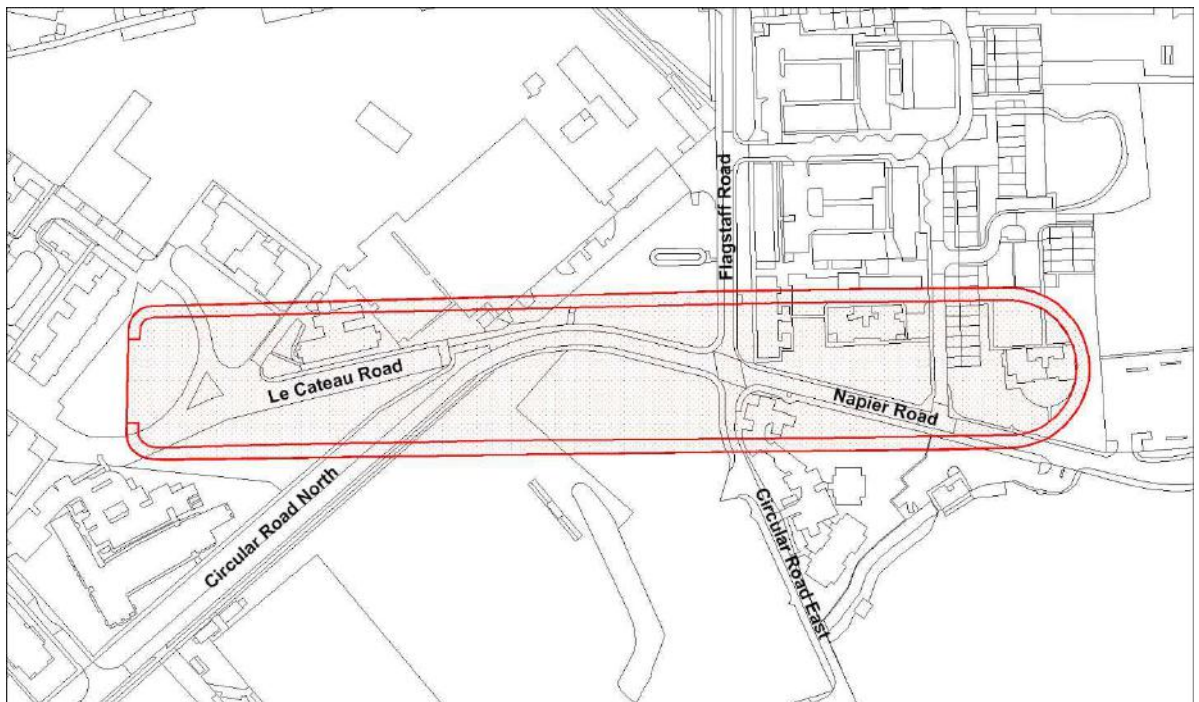


Figure 6: Roman Circus in relationship to the road network.

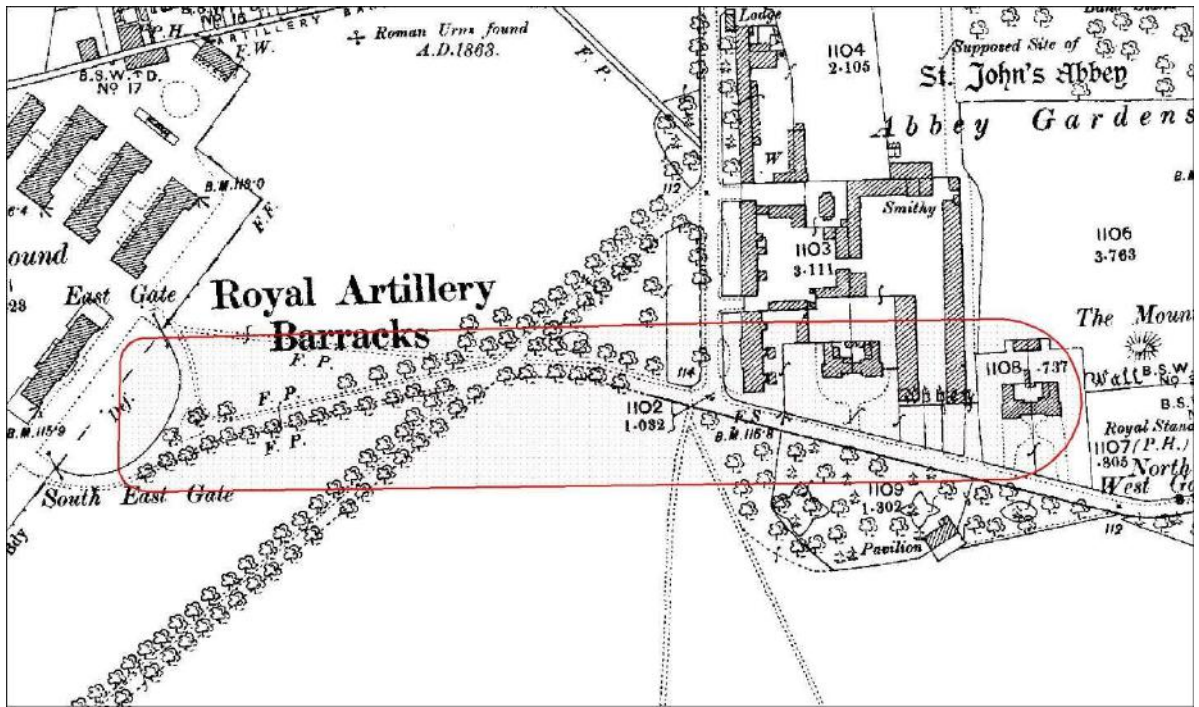


Figure 7: Roman Circus in relationship to Epoch 2 of the OS County Series 1:2500, 1897-1904.

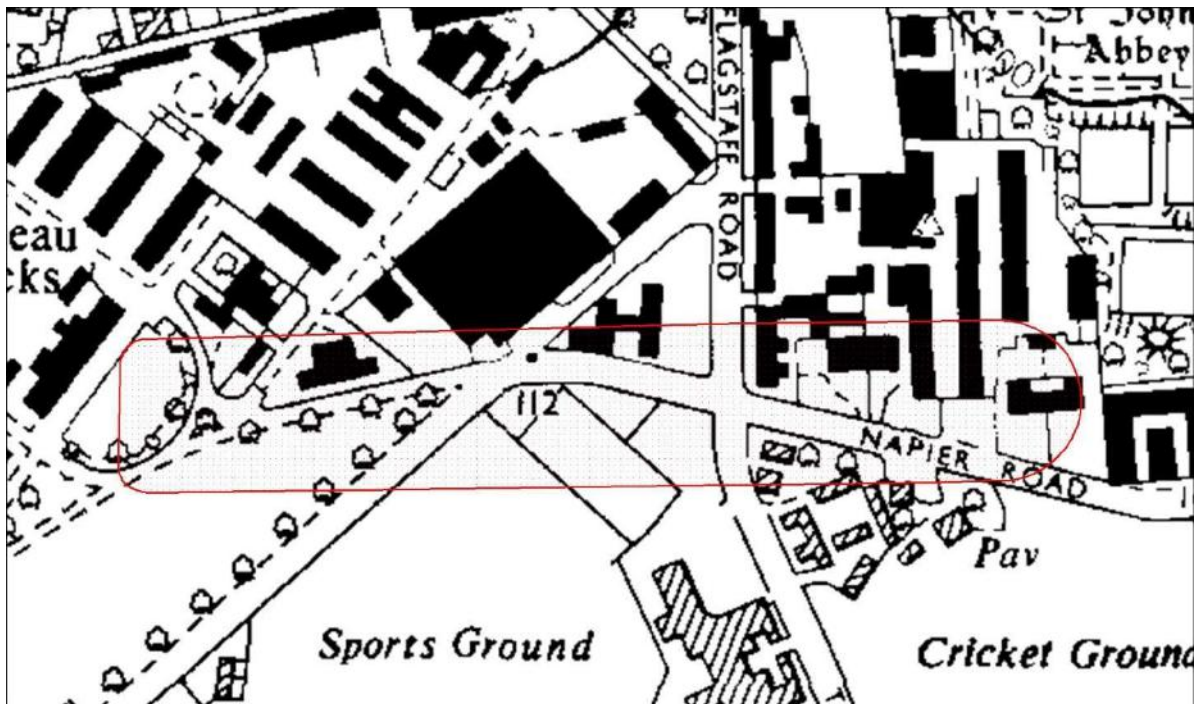


Figure 8: Roman Circus in relationship to the OS 1:10,000 map, 1973-1993.

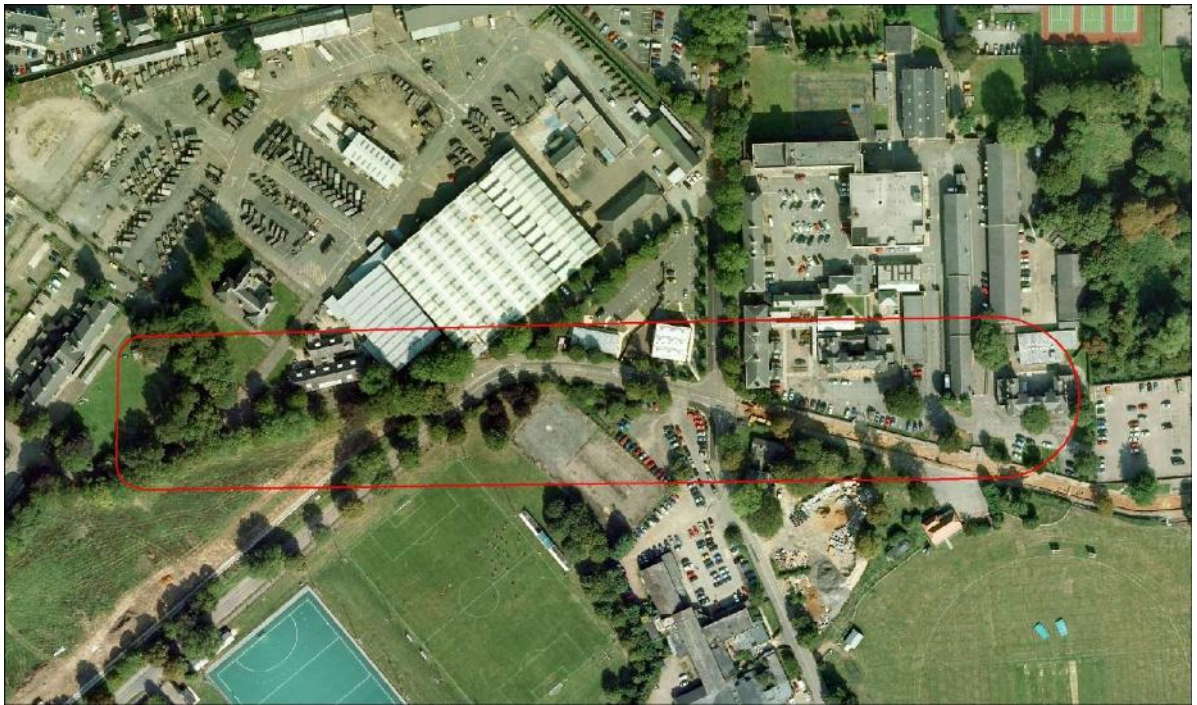


Figure 9: Roman Circus in relation to the 2006 aerial photograph, and before significant redevelopment of the area.

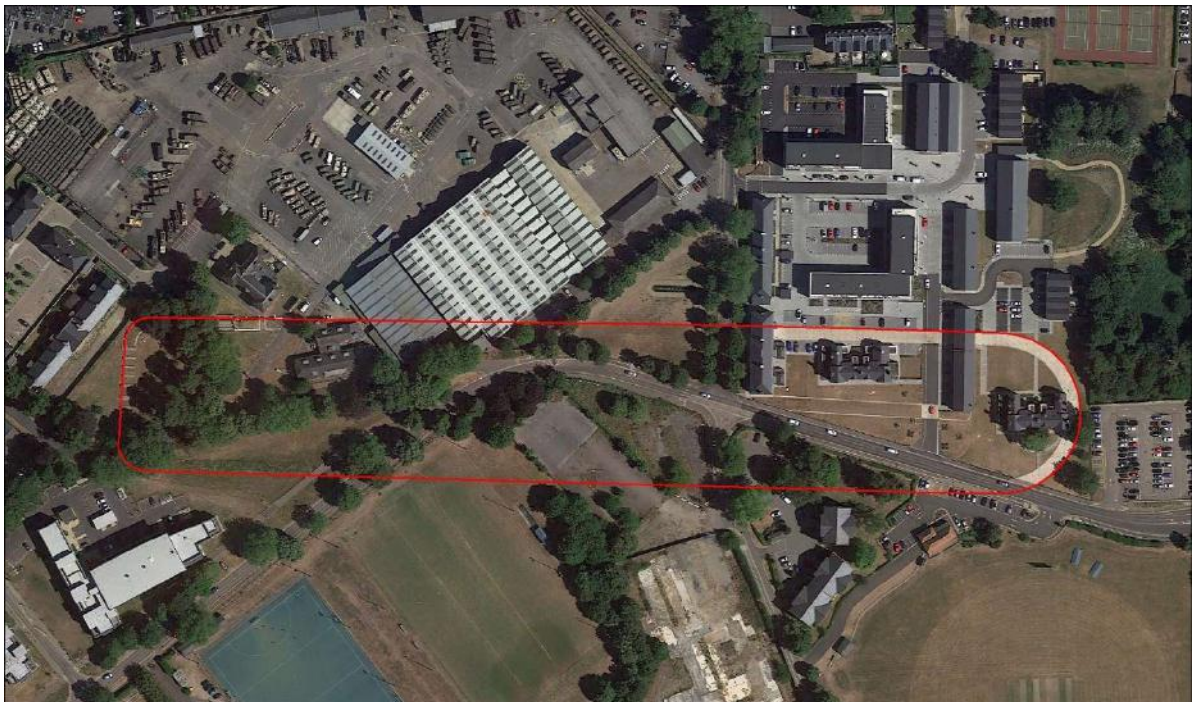


Figure 10: Roman Circus in relation to the current aerial photograph.



Figure 11: Roman Circus Scheduled Monument ownership: EX905194 (Abacus Land 4 Ltd) in red.



Figure 12: Roman Circus Scheduled Monument ownership: EX787918 (Taylor Wimpey) in red.

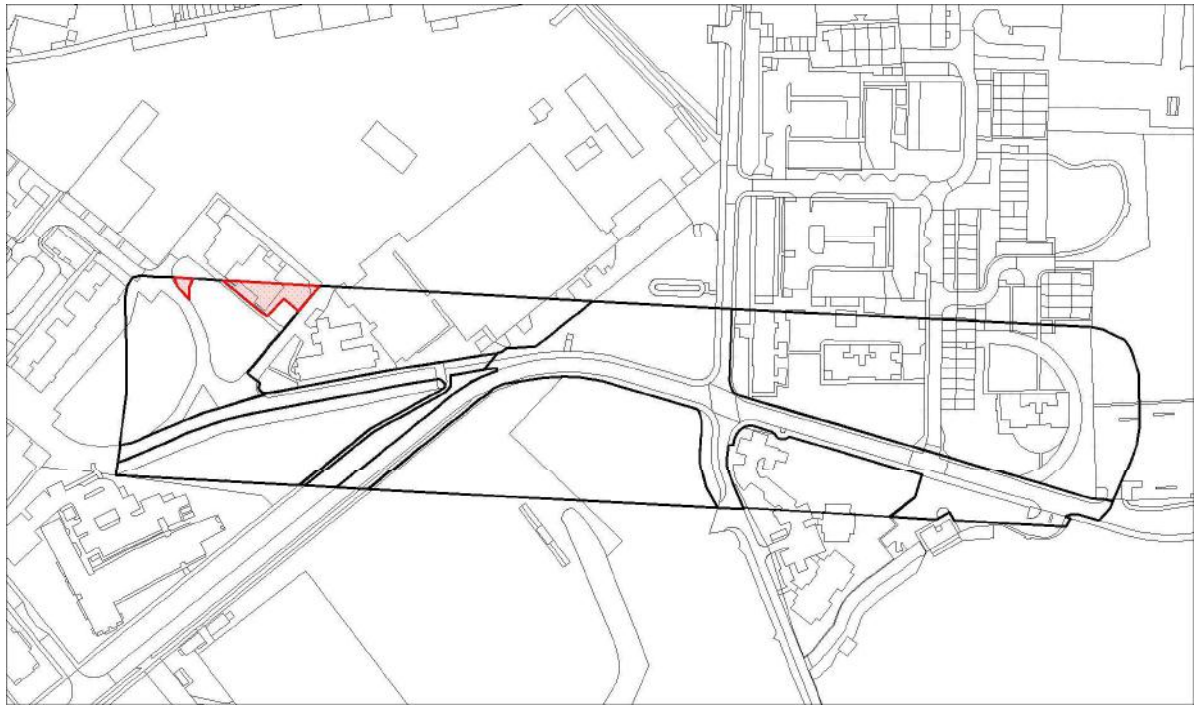


Figure 13: Roman Circus Scheduled Monument ownership: EX879758 (Colchester Archaeological Trust) in red.



Figure 14: Roman Circus Scheduled Monument ownership: EX788209 (Bovis Homes Ltd) in red.

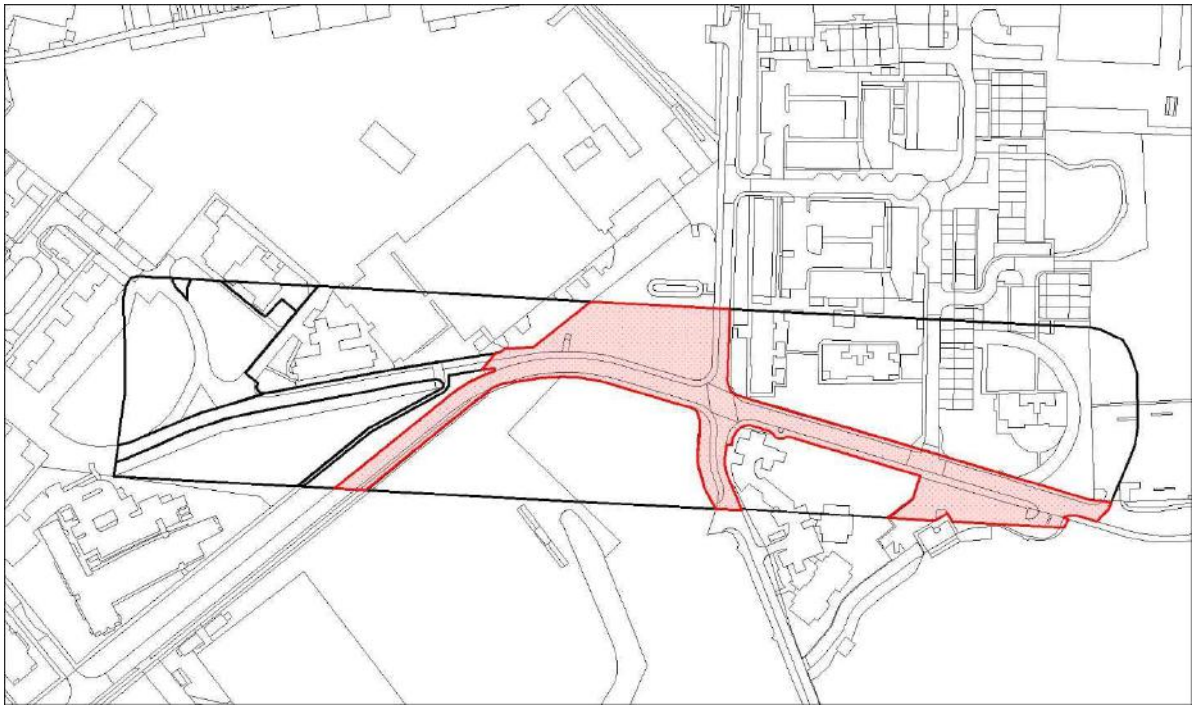


Figure 15: Roman Circus Scheduled Monument ownership: EX758172 (Taylor Wimpey) in red.



Figure 16: Roman Circus Scheduled Monument ownership: EX832089 (Taylor Wimpey) in red.



Figure 17: Roman Circus Scheduled Monument ownership: EX641744 (Ministry of Defence) in red.

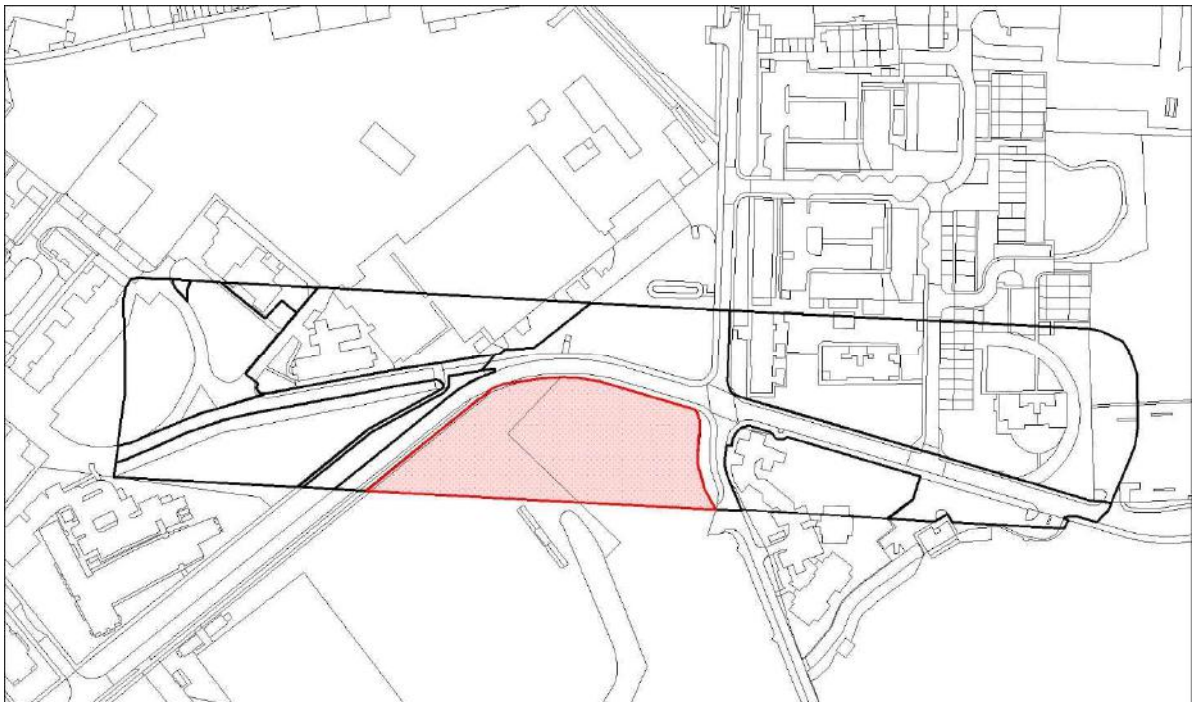


Figure 18: Roman Circus Scheduled Monument ownership: EX970726 (Secretary of State for Communities and Government) in red.

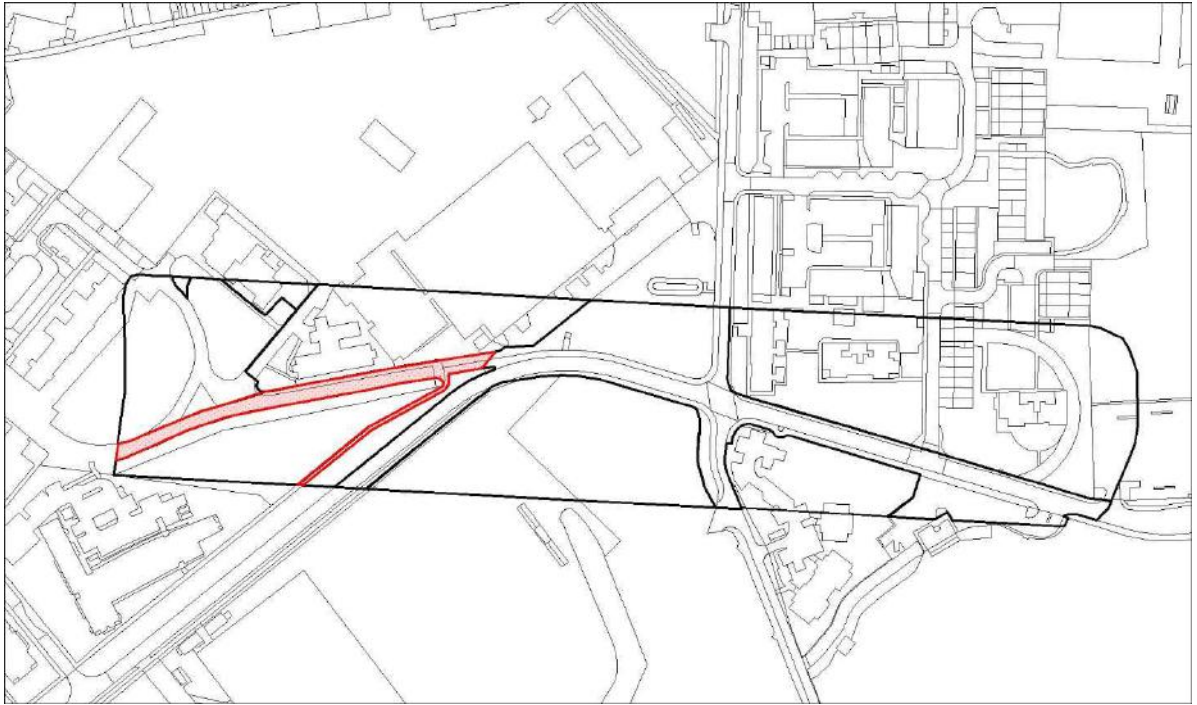


Figure 19: Roman Circus Scheduled Monument ownership: EX758211 (Taylor Wimpey) in red.