



The English Indices of Deprivation 2019

An analysis of relative deprivation in small areas within the borough of Colchester

Content

About	2
2019 Report	3
Essex District Rankings on IMD 2019	4
Deprivation in Colchester	5
Most Deprived LSOAs in Colchester	6
Least Deprived LSOAs in Colchester	7
Changes in Deprivation Since 2015	7
Income Deprivation in Colchester	8
Income Deprivation Domain by LSOA	9
Population Affected by Income Deprivation	10
Changes in Income Deprivation Since 2015	10
Employment Deprivation in Colchester	11
Employment Deprivation Domain by LSOA	12
Population Affected by Employment Deprivation	13
Changes in Employment Deprivation Since 2015	13
Education, Skills and Training Deprivation in Colchester	14
Education, Skills and Training Deprivation Domain by LSOA	15
Population Affected by Education, Skills and Training Deprivation	16
Changes in Education, Skills and Training Deprivation Since 2015	16
Health Deprivation and Disability in Colchester	17
Health Deprivation and Disability Domain by LSOA	18
Population Affected by Health Deprivation and Disability	19
Changes in Health Deprivation and Disability Since 2015	19
Crime Deprivation in Colchester	20
Crime Deprivation Domain by LSOA	21
Population Affected by Crime Deprivation	22
Changes in Crime Deprivation Since 2015	22
Barriers to Housing and Service Deprivation in Colchester	23
Barriers to Housing and Services Deprivation Domain by LSOA	24/25
Population Affected by Barriers to Housing and Services Deprivation	26
Changes in Barriers to Housing and Services Deprivation Since 2015	26
Living Environment Deprivation in Colchester	27
Living Environment Deprivation Domain by LSOA	28
Population Affected by Living Environment Deprivation	29
Changes in Living Environment Deprivation Since 2015	29
Income Deprivation Affecting Children in Colchester	30
Income Deprivation Affecting Children Domain by LSOA	31
Population Affected by Income Deprivation Affecting Children	32
Income Deprivation Affecting Older People in Colchester	33
Income Deprivation Affecting Older People Domain by LSOA	34
Population Affected by Income Deprivation Affecting Older People	35

About

The English Indices of Deprivation is based on 39 separate indicators, organised across seven distinct domains of deprivation which are combined and weighted to calculate the Index of Multiple Deprivation 2019 (IMD 2019). This report focuses on the seven distinct domains of deprivation. The Index of Multiple Deprivation itself is an overall measure of multiple deprivation experienced by people living in an area and is calculated for every Lower layer Super Output Area (referred to as LSOAs throughout this report) in England.

Lower-Layer Super Output Areas (LSOAs) are small areas designed to be of a similar population size, with an average of approximately 1,500 residents or 650 households. They were produced by the Office for National Statistics for the reporting of small area statistics.

There are 105 LSOAs in the borough and 32,844 in England. LSOAs have an average population of 1500 people and 'fit' into the existing ward boundaries. Each of our wards has between one and six LSOAs. The IMD 2019 can be used to rank every small area in England according to their relative level of deprivation.

The English Indices of Deprivation are a continuous measure of relative deprivation therefore there is no definitive point on the scale below which areas are deprived and above which they are not. In most cases, users concentrate on defining deprived areas by using a cut-off value beyond which areas are deemed to be the most deprived. For instance, several uses of the Index of Multiple Deprivation have focussed on the most deprived 10 per cent (most deprived decile) of LSOAs in England.

For the purpose of calculation, LSOAs are ranked such that the most deprived LSOA is given the rank of 1. The previous English Indices of Deprivation report was released in September 2015 and relates to data as of 2014. A report into the findings of this report is [found on our website](#). Throughout this report, comparisons are made between the 2019 data release, and the 2015 report.

2019 Report

The Indices of Deprivation 2019 were published by the Department for Communities and Local Government in September 2019.

Queries / Comments:

This report was produced by the Research and Change Team at Colchester Borough Council. If you have any comments or queries, please do not hesitate to contact: research@colchester.gov.uk

Disclaimer:

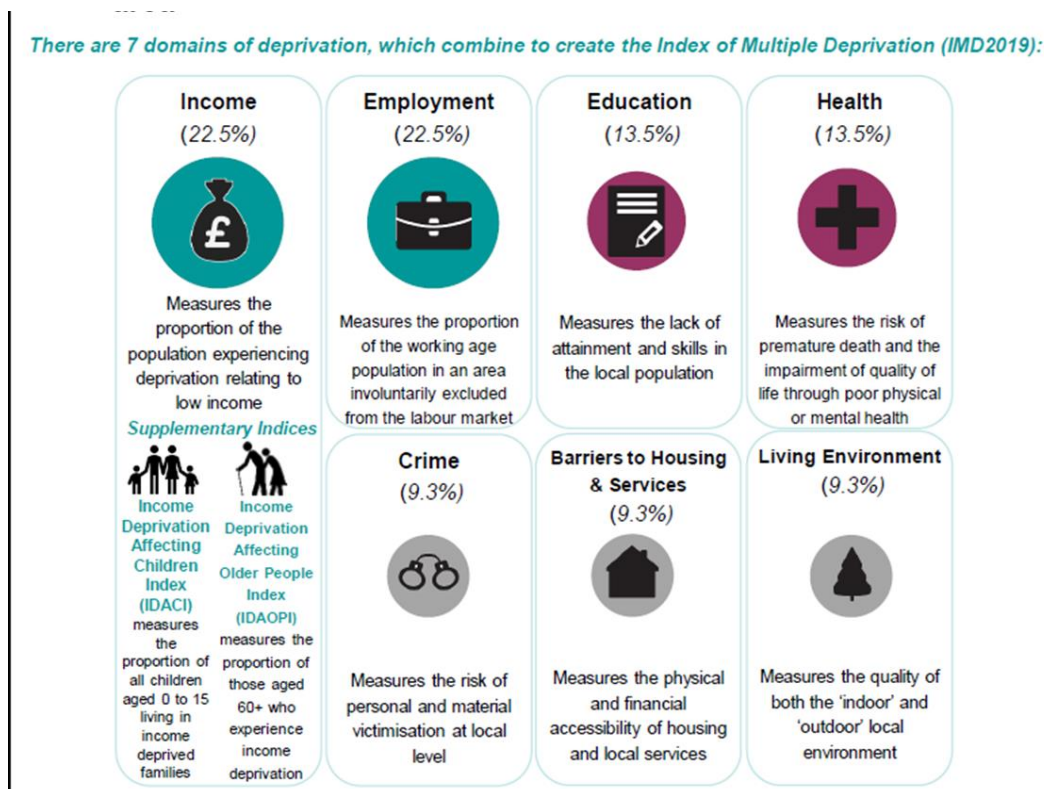
The information in this report was, as far as is known, correct at the date of publication. Colchester Borough Council cannot accept responsibility for any error or omission.

Notes:

The IMD 2019 is a relative measure of deprivation and therefore it **cannot** be used to determine 'how much' more deprived one LSOA is than another. For example, it is not possible to say that LSOA X, ranked 20 is twice as deprived as LSOA Y, which is ranked 40. However, it is possible to say that X is more deprived than Y.

The IMD 2019 scores and ranks **cannot** be used as absolute measures of deprivation or to identify absolute change over time, because an area's score is affected by the scores of every other area.

The IMD is created from the seven domain scores. The scores are first standardised to the same scale and transformed to a common distribution - the exponential distribution. They are then combined using weights chosen to reflect the relative importance of each domain to multiple deprivation, according to available research evidence – as shown below:



https://assets.publishing.service.gov.uk/government/uploads/system/uploads/attachment_data/file/833959/IdD2019_Infographic.pdf

Regional Context

The table below shows how the borough of Colchester compares with other districts in Essex County. This provides a quick insight into how levels of deprivation compare across the county.

Each authority is ranked out of 317 nationally in the following categories:

- **Average Score** and **Average Rank** measure how the average level of deprivation in each authority compares nationally.
- **Extent** refers to the proportion of the district's population living in the most deprived LSOAs.
- **Local Concentration** highlights the severity of multiple deprivation in each district, measuring hotspots of deprivation.

The table below shows how each authority ranks out of 317 for each of the above categories. Higher rankings indicate higher levels of deprivation. The arrows in the table show how each authority has changed in comparison to other Essex districts since the 2015 English Indices of Deprivation for each category.

Essex District rankings on IMD 2019 summary measures (National rank out of 317)

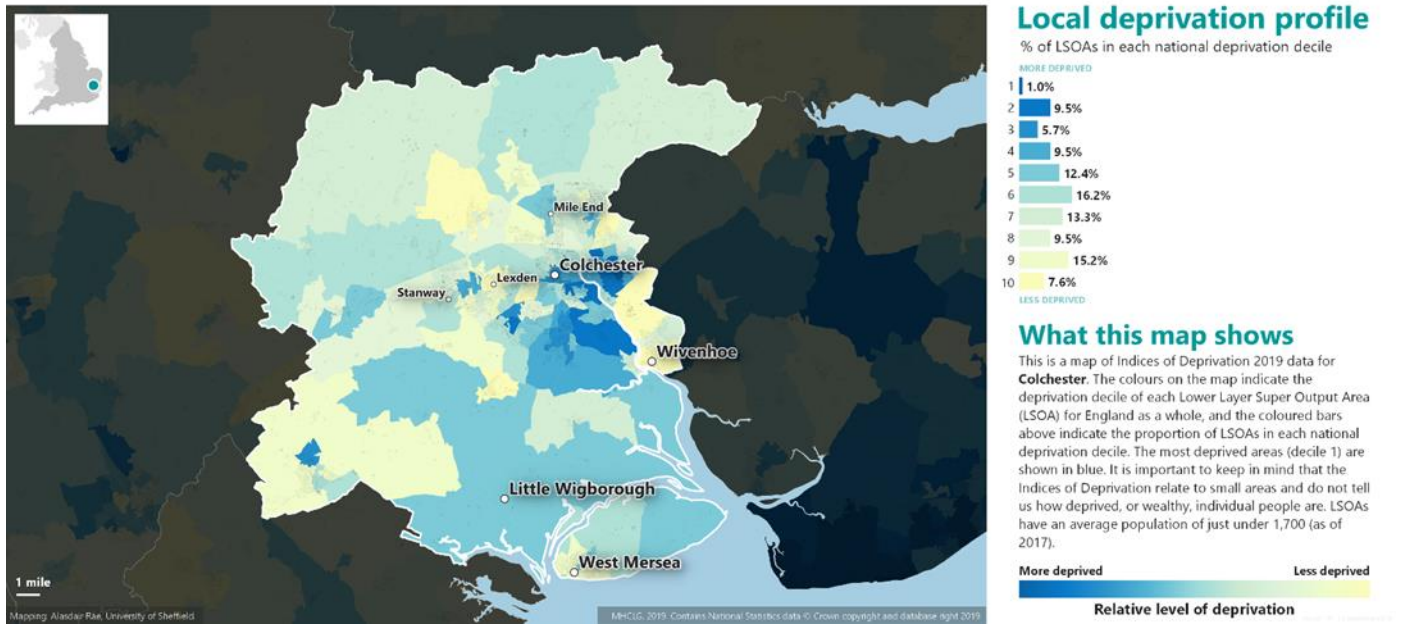
Rank	Average Score			Average Rank		Extent			Local Concentration			
1	Tendring	36	=	Tendring	32	=	Tendring	53	=	Tendring	23	=
2	Basildon	100	=	Harlow	100	=	Basildon	76	=	Basildon	94	=
3	Harlow	124	=	Basildon	111	=	Colchester	169	▲	Castle Point	163	▲
4	Castle Point	178	▲	Colchester	181	=	Harlow	172	▼	Colchester	168	▼
5	Colchester	181	▼	Castle Point	182	=	Castle Point	177	=	Harlow	197	=
6	Epping Forest	205	▲	Epping Forest	200	▲	Braintree	229	▲	Braintree	230	▲
7	Braintree	211	▼	Braintree	203	▼	Chelmsford	240	▼	Chelmsford	232	▼
8	Maldon	222	=	Maldon	211	=	Epping Forest	243	=	Epping Forest	235	=
9	Chelmsford	253	=	Chelmsford	260	=	Rochford	252	▲	Maldon	251	=
10	Rochford	284	=	Rochford	286	=	Maldon	269	▼	Rochford	259	=
11	Brentwood	268	=	Brentwood	287	=	Brentwood	295	=	Brentwood	286	=
12	Uttlesford	297	=	Uttlesford	295	=	Uttlesford	295	=	Uttlesford	314	=

Colchester ranks 5th in comparison to other Essex authorities in terms of average score. The district then ranks 4th for average rank, 3rd for extent and 4th for local concentration.

Deprivation in Colchester

English Indices of Deprivation 2019

COLCHESTER



Source: MHCLG - <https://www.gov.uk/government/statistics/english-indices-of-deprivation-2019>

To view an interactive map for Colchester showing a combined measure for deprivation, which considers all seven domains of deprivation using the following weights; (in comparison to the 2015 IMD index):

- Income Deprivation (22.5%)
- Employment Deprivation (22.5%)
- Education, Skills and Training Deprivation (13.5%)
- Health Deprivation & Disability (13.5%)
- Crime Deprivation (9.3%)
- Barriers to Housing & Services Deprivation (9.3%)
- Living Environment Deprivation (9.3%)

Click Here

Interactive Map Instructions:

Select location using the pin icon on the right-hand side and type Colchester in 'Local Authority'



Then, click on the 'Map Legend' icon



Finally, ensure the combined measure for deprivation is selected by clicking on



Summary

Colchester has 27 LSOAs that fall into the top 40% of most deprived LSOAs in the county. These LSOAs are largely concentrated in the wards of Berechurch, Greenstead, New Town & Christ Church, Old Heath & The Hythe and St Anne's & St John's. Colchester has 1 LSOAs in the 10% most deprived in the country, found in the ward Greenstead.

Most Deprived LSOAs in Colchester

The table below shows the LSOAs in Colchester that fall into the most deprived 40% in England.

Deprivation Decile	LSOA Name	Ward	Rank
0-10%	Magnolia	Greenstead	1,927
11-20%	Forest	Greenstead	3,456
	Salary Brook South	Greenstead	3,616
	St Anne's Estate	St Anne's & St John's	3,972
	New Town North	New Town & Christ Church	5,142
	Barnhall	Old Heath & The Hythe	5,168
	Speedwell	Old Heath & The Hythe	5,405
	Sycamore	Greenstead	6,106
	Eastern Approaches North	Greenstead	6,120
	Paxmans	Old Heath & The Hythe	6,467
	Iceni Square	Shrub End	6,502
21-30%	Rayner Road	Shrub End	7,520
	Monkwick	Berechurch	7,590
	Castle Central	Castle	7,622
	Blackheath	Berechurch	9,029
	Maypole	Tiptree	9,082
	The willows	Berechurch	9,750
31-40%	Chinook	Highwoods	10,060
	Friday wood	Berechurch	10,310
	East Ward	Greenstead	10,508
	Collingwood	Prettygate	10,537
	Berechurch North	Berechurch	10,913
	Harwich Road	St Anne's & St John's	10,950
	Castle East	Castle	11,046
	Salary Brook North	Greenstead	11,486
	Wheatfield Road	Stanway	12,493
	Donyland woods	Old Heath & The Hythe	12,501

(Table 1: Most deprived LSOAs in Colchester)

The most deprived LSOA in Colchester is Magnolia in the ward of Greenstead, which is ranked as the 1,927th most deprived in England (out of 32,844 LSOAs nationally) and was also recorded as the most deprived LSOA in Colchester in 2015.

Magnolia is now the only Colchester LSOA that falls within the top 10% of deprived areas in England. Barnhall LSOA in Old Heath & The Hythe, Salary Brook South in Greenstead and St Anne's Estate in St Anne's & St John's have all fallen into the 11-20% most deprived bracket.

Least Deprived LSOAs in Colchester

Deprivation Decile	LSOA Name	Ward	Rank
81-90%	London Road	Lexden & Braiswick	26,808
	Anchor Road	Tiptree	26,838
	Victoria Esplanade	Mersea & Pyefleet	26,994
	Horkesley Heath	Rural North	27,037
	Mersea Coastal	Mersea & Pyefleet	27,322
	Braiswick	Mile End	27,337
	Tiptree Heath	Tiptree	27,361
	Cambridge Road	New Town & Christ Church	27,427
	Messing & Marney	Marks Tey & Layer	27,601
	Vine Road	Tiptree	27,856
	The Saints	St Anne's & St John's	28,168
	Stanway Hall	Stanway	28,502
	Baden Powell	Prettygate	28,731
	The Firs	Mersea & Pyefleet	29,121
	Prettygate Centre	Prettygate	29,398
	Gavin Way East	Highwoods	29,520
91-100%	Birchwood	St Anne's & St John's	30,133
	Wivenhoe Central	Wivenhoe	30,446
	Church Lane	Lexden & Braiswick	31,343
	Rectory	Wivenhoe	31,509
	Wivenhoe Park	Wivenhoe	31,886
	Layer	Marks Tey & Layer	32,031
	Drury	New Town & Christ Church	32,188
	Bergholt	Lexden & Braiswick	32,817

(Table 2: Least deprived LSOAs in Colchester)

Table 2 shows the least deprived LSOAs in Colchester by the combined measure of deprivation. Colchester has 24 LSOAs that fall in to the 20% least deprived in England. The LSOA ranked as the least deprived is Bergholt in the ward of Lexden & Braiswick. Lexden & Braiswick, Mersea & Pyefleet, Tiptree and Wivenhoe all have 3 LSOAs which fall into the 20% least deprived classification.

Changes in Deprivation since 2015

In the 2015 Indices of Deprivation, Colchester had 4 LSOAs in the 10% most deprived nationally. These were Barnhall, Magnolia, Salary Brook South and St Anne's Estate. Since then, the number of LSOAs in the 10% most deprived has fallen to just 1, with Barnhall, Salary Brook South and St Anne's Estate moving down to the 11-20% most deprived decile.

In 2015, Colchester had 32 LSOAs in the top 40% most deprived in England. This has since decreased to 27.

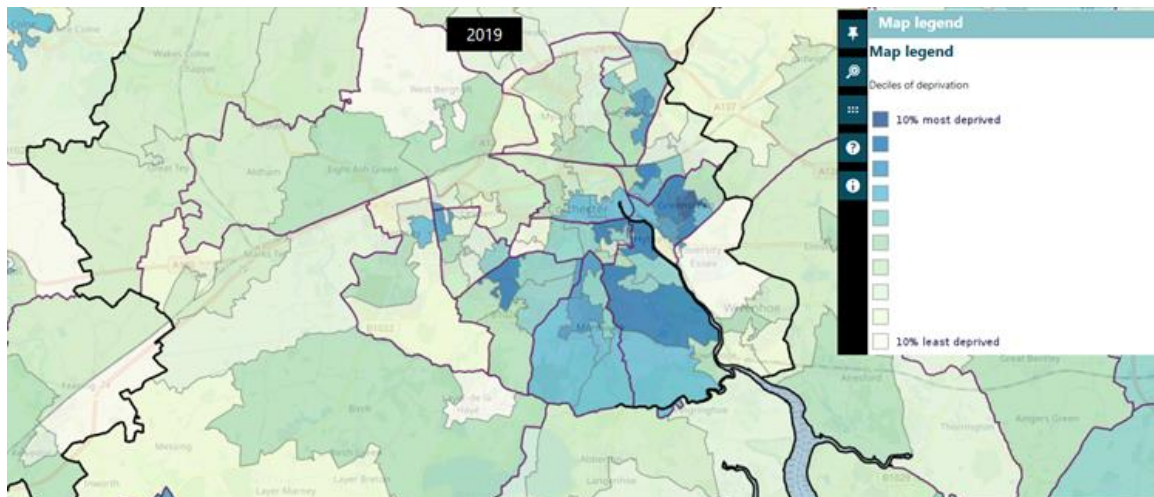
Bergholt in Lexden & Braiswick is the least deprived LSOA in Colchester. This was also the least deprived LSOA in 2015.

In 2015, Colchester had 22 LSOAs which fell into the 20% least deprived in England. This has now risen by 2 to 24 LSOAs.

Income Deprivation in Colchester

The income domain measures the proportion of the population experiencing deprivation relating to low income. The definition of low income for this measure includes people out of work and those in work but who have low earnings.

All LSOAs nationally are ranked from most to least deprived, and are then divided into 10 equal groups, or deciles. The analysis of income deprivation in this report shows which Colchester LSOAs fall into which of these deciles, with the 1-10% decile representing the most deprived LSOAs in the country, and 91-100% the least.



Source: MHCLG - <https://www.gov.uk/government/statistics/english-indices-of-deprivation-2019>

To view an interactive map showing the proportion of the Colchester population experiencing deprivation relating to income:

[Click Here](#)

Interactive Map Instructions:

Select location using the pin icon on the right-hand side and type Colchester in 'Local Authority'



Then, click on the 'Map Legend' icon



Finally, ensure the 'Income Deprivation Domain' is selected by clicking on the money icon



Summary

Colchester has 28 LSOAs that fall into the top 40% of most deprived LSOAs in the county for this domain. These LSOAs are concentrated in the wards of Greenstead, Berechurch, Old Heath & The Hythe and St Anne's & St John's. Colchester has 1 LSOA in the 10% most deprived in the country, found in the ward of Greenstead. A full breakdown is provided in table 3 (page 9).

Income Deprivation Domain by LSOA

The table below shows the LSOAs in Colchester that fall into the most deprived 40% by the income deprivation domain in England.

Income Deprivation Decile	LSOA Name	Ward	Income Rank (where 1 is most deprived)
0-10%	Magnolia	Greenstead	2,056
11-20%	Salary Brook South	Greenstead	3,297
	St Anne's Estate	St Anne's & St John's	3,934
	New Town North	New Town & Christ Church	4,162
	Iceni Square	Shrub End	4,237
	Barnhall	Old Heath & The Hythe	4,305
	Forest	Greenstead	4,954
	Paxmans	Old Heath & The Hythe	6,205
	Rayner Road	Shrub End	6,229
	Sycamore	Greenstead	6,233
	Speedwell	Old Heath & The Hythe	6,488
21-30%	Collingwood	Prettygate	7,451
	Chinook	Highwoods	7,863
	Monkwick	Berechurch	8,080
	Berechurch North	Berechurch	9,347
	Highwoods East	Highwoods	9,355
	Eastern Approaches North	Greenstead	9,656
	Maypole	Tiptree	9,737
	Wheatfield Road	Stanway	9,980
31-40%	Friday wood	Berechurch	10,049
	Castle Central	Castle	10,176
	Harwich Road	St Anne's & St John's	10,254
	Donyland woods	Old Heath & The Hythe	11,135
	Blackheath	Berechurch	11,526
	West Mersea Centre	Mersea & Pyefleet	12,116
	East Ward	Greenstead	12,324
	Castle East	Castle	12,456
	Salary Brook North	Greenstead	12,777

(Table 3: Most deprived LSOAs in Colchester by Income deprivation)

The most deprived LSOA in Colchester by the income deprivation domain is Magnolia in the ward of Greenstead which is ranked as the 2,056th most deprived in England (out of 32,844 LSOAs nationally). Magnolia is however now the only LSOA to fall into the 10% most deprived in England by income deprivation. Meanwhile, Colchester has 10 LSOAs which fall into the 11-20% most deprived income decile.

Greenstead has the highest number of LSOAs which fall into the top 40% most deprived in England by this measure, with 6 LSOAs, while Berechurch and Old Heath & The Hythe are joint second with 4 LSOAs each.

Population Affected by Income Deprivation

In Colchester 47,693 people are affected by income deprivation, this equates to 24.77% of the overall population.

The table below shows the Colchester population that falls within the 40% most affected by income deprivation in England.

Income Deprivation Decile	Number of People Affected	Percentage of Colchester Population
0-10%	1,679	0.87%
11-20%	17,073	8.87%
21-30%	11,626	6.04%
31-40%	17,315	8.99%

Changes in Income Deprivation since 2015

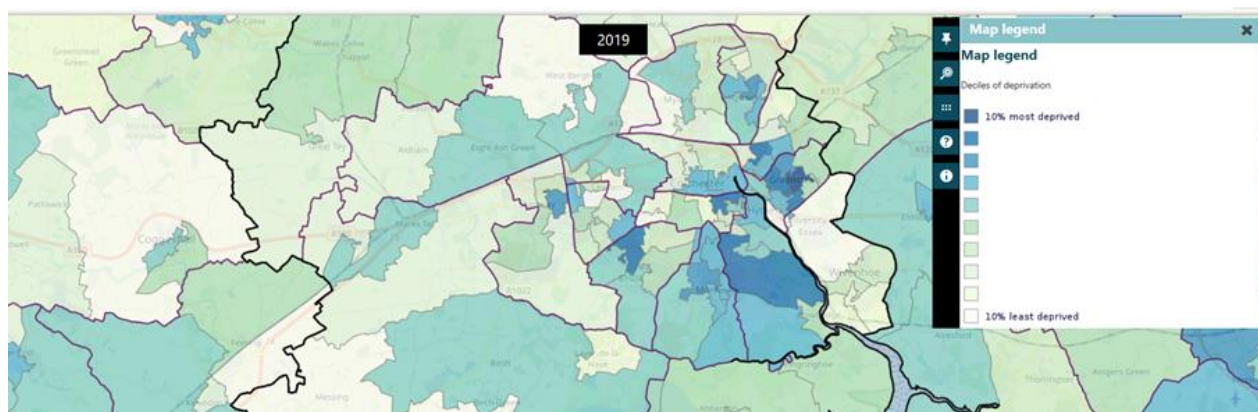
In the 2015 Indices of Deprivation, Colchester had 4 LSOA in the 10% most deprived by income deprivation nationally. Since then, the number of LSOAs in the 10% most deprived has decreased to 1, with St Anne's Estate, Barnhall and Salary Brook South moving down to the 11-20% most deprived decile.

In 2015, Colchester had 32 LSOAs in the top 40% most deprived by income deprivation in England, this has since decreased by 4.

Employment Deprivation in Colchester

The Employment deprivation domain refers to the proportion of the working age population in an area who are involuntarily excluded from the labour market. This includes people who would like to work but are unable to do so due to unemployment, sickness or disability, or caring responsibilities.

All LSOAs nationally are ranked from most to least deprived, and are then divided into 10 equal groups, or deciles. The analysis of employment deprivation in this report shows which Colchester LSOAs fall into which of these deciles, with the 1-10% decile representing the most deprived LSOAs in the country, and 91-100% the least.



Source: MHCLG - <https://www.gov.uk/government/statistics/english-indices-of-deprivation-2019>

To view an interactive map showing the proportion of the Colchester population experiencing deprivation relating to employment:

[Click Here](#)

Interactive Map Instructions:

Select location using the pin icon on the right-hand side and type Colchester in 'Local Authority'



Then, click on the 'Map Legend' icon



Finally, ensure the 'Employment Deprivation Domain' is selected by clicking on the briefcase icon



Summary

Colchester has 30 LSOAs that fall into the top 40% of most deprived LSOAs in the county for this domain. These LSOAs are concentrated in the wards of Berechurch, Greenstead and Old Heath & The Hythe.

Colchester has one LSOA in the 10% most deprived in the country, found in the ward of Greenstead. A full breakdown is provided in table 4 (page 12).

Employment Deprivation domain by LSOA

The table below shows the LSOAs in Colchester that fall into the most deprived 40% by the employment deprivation domain in England.

Employment Deprivation Decile	LSOA Name	Ward	Employment Rank (where 1 is most deprived)
0-10%	Magnolia	Greenstead	2,144
11-20%	Rayner Road	Shrub End	3,961
	Speedwell	Old Heath & The Hythe	4,808
	Barnhall	Old Heath & The Hythe	4,896
	St Anne's Estate	St Anne's & St John's	5,162
	Forest	Greenstead	5,193
	Salary Brook South	Greenstead	5,529
	Iceni Square	Shrub End	5,864
	New Town North	New Town & Christ Church	6,526
21-30%	Sycamore	Greenstead	8,588
	Maypole	Tiptree	8,804
	Chinook	Highwoods	9,466
	Wheatfield Road	Stanway	9,530
	Monkwick	Berechurch	9,719
31-40%	Castle Central	Castle	9,950
	Blackheath	Berechurch	10,204
	Collingwood	Prettygate	10,325
	West Mersea Centre	Mersea & Pyefleet	10,400
	Highwoods East	Highwoods	10,707
	Berechurch North	Berechurch	10,812
	Parsons Heath	St Anne's & St John's	10,904
	Plume Avenue	Prettygate	10,967
	The Gilberd	Highwoods	11,251
	Harwich Road	St Anne's & St John's	11,291
	Paxmans	Old Heath & The Hythe	11,331
	Donyland woods	Old Heath & The Hythe	12,197
	Eastern Approaches North	Greenstead	12,356
	The willows	Berechurch	12,454
	Australian Estate	Berechurch	12,623
	Castle East	Castle	12,942

(Table 4: Most deprived LSOAs in Colchester by employment deprivation)

The most deprived LSOA in Colchester by the employment deprivation domain is Magnolia in the ward of Greenstead, which is ranked as the 2,144th most deprived in England by this measure (out of 32,844 LSOAs nationally).

Berechurch has the highest number of LSOAs which fall into the top 40% most deprived in England by this measure, with 5 LSOAs. Both Greenstead and Old Heath & The Hythe have 4 LSOAs each in the top 40% most deprived.

Population Affected by Employment Deprivation

In Colchester 49,225 people are affected by Employment Deprivation, this equates to 25.57% of the overall population.

The table below shows the Colchester population that falls within the 40% most affected by Employment Deprivation in England.

Employment Deprivation Decile	Number of People Affected	Percentage of Colchester Population
0-10%	1,679	0.87%
11-20%	12,386	6.43%
21-30%	8,339	4.33%
31-40%	26,821	13.93%

Changes in Employment Deprivation since 2015

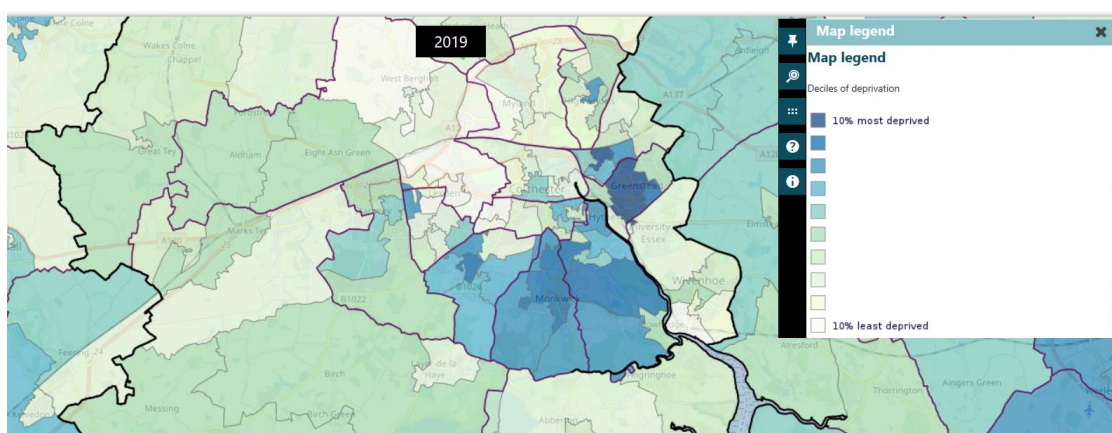
In the 2015 Indices of Deprivation, Colchester had 1 LSOAs in the 10% most deprived by employment deprivation nationally, which was Magnolia. This remains unchanged.

In 2015, Colchester had 30 LSOAs in the top 40% most deprived by employment deprivation in England. This also remains unchanged.

Education, Skills and Training Deprivation in Colchester

The education, skills and training deprivation domain measure the lack of attainment and skills in the local population. The indicators fall into two sub-domains: one relating to children and young people and one relating to adult skills.

All LSOAs nationally are ranked from most to least deprived, and are then divided into 10 equal groups, or deciles. The analysis of education, skills and training deprivation in this report shows which Colchester LSOAs fall into which of these deciles, with the 1-10% decile representing the most deprived LSOAs in the country, and 91-100% the least. EFC 088698



Source: MHCLG - <https://www.gov.uk/government/statistics/english-indices-of-deprivation-2019>

To view an interactive map showing the proportion of the Colchester population experiencing deprivation relating to education, skills and training:

[Click Here](#)

Interactive Map Instructions:

Select location using the pin icon on the right-hand side and type Colchester in 'Local Authority'



Then, click on the 'Map Legend' icon



Finally, ensure the 'Education, Skills and Training Deprivation Domain' is selected by clicking on the notepad icon



Summary

Colchester has 32 LSOAs that fall into the top 40% of most deprived LSOAs in the county for this domain. These LSOAs are concentrated in the wards of Berechurch, Greenstead and Old Heath & The Hythe.

Colchester has 6 LSOAs in the 10% most deprived in the country, found in the wards of Greenstead, St Anne's & St John's. A full breakdown is provided in table 5 (page 15).

(English Indices of Multiple Deprivation 2019)

Education, Skills and Training Deprivation Domain by LSOA

The table below shows the LSOAs in Colchester that fall into the most deprived 40% by the education, skills and training deprivation domain in England.

Education, Skills & Training Deprivation Decile	LSOA Name	Ward	Education, Skills & Training Rank (where 1 is most deprived)
0-10%	Eastern Approaches North	Greenstead	1,425
	Salary Brook South	Greenstead	1,473
	Magnolia	Greenstead	1,768
	St Anne's Estate	St Anne's & St John's	1,789
	Forest	Greenstead	2,451
	Sycamore	Greenstead	3,243
11-20%	Maypole	Tiptree	3,746
	Iceni Square	Shrub End	3,796
	Speedwell	Old Heath & The Hythe	4,068
	Monkwick	Berechurch	4,100
	Salary Brook North	Greenstead	4,417
	Blackheath	Berechurch	4,489
	Barnhall	Old Heath & The Hythe	4,943
	Australian Estate	Berechurch	5,597
	The willows	Berechurch	6,503
21-30%	Friday wood	Berechurch	6,607
	Chinook	Highwoods	7,668
	Rayner Road	Shrub End	7,872
	West Mersea Centre	Mersea & Pyefleet	8,401
	Berechurch North	Berechurch	8,766
	Paxmans	Old Heath & The Hythe	8,820
	Parsons Heath	St Anne's & St John's	9,248
	Collingwood	Prettygate	9,463
	Donyland woods	Old Heath & The Hythe	9,823
31-40%	Gosbecks	Shrub End	9,929
	New Town North	New Town & Christ Church	10,119
	Alamein Road & Homefield Road	Shrub End	10,591
	New Road	Tiptree	11,466
	Littlefields	Shrub End	11,772
	Harwich Road	St Anne's & St John's	11,928
	Strood	Mersea & Pyefleet	12,402
	Whitehall	Old Heath & The Hythe	13,043

(Table 5: Most deprived LSOAs in Colchester by education, skills & training deprivation)

The most deprived LSOA in Colchester by this domain is Eastern Approaches North, which is ranked as the 1,425th most deprived in England by this measure (out of 32,844 LSOAs nationally).

Berechurch has the highest number of LSOAs which fall into the top 40% most deprived in England by this measure, with 6 LSOAs, while Greenstead and Old Heath & The Hythe are joint second with 5 LSOAs each.

Population Affected by Education, Skills and Training Deprivation

In Colchester 54,226 people are affected by Education, Skills and Training deprivation, this equates to 28.17% of the overall population.

The table below shows the Colchester population that falls within the 40% most affected by Education, Skills and Training deprivation in England.

Education, Skills and Training Deprivation Decile	Number of People Affected	Percentage of Colchester Population
0-10%	9,419	4.89%
11-20%	13,137	6.82%
21-30%	15,592	8.10%
31-40%	16,078	8.35%

Changes in Education, Skills and Training Deprivation since 2015

In the 2015 Indices of Deprivation, Colchester had 7 LSOAs in the 10% most deprived by education, skills and training deprivation nationally which has since decreased to 6, with both Icen Square and Monkwick moving down to the 11-20% most deprived decile and Sycamore moving up to the 10% most deprived decile.

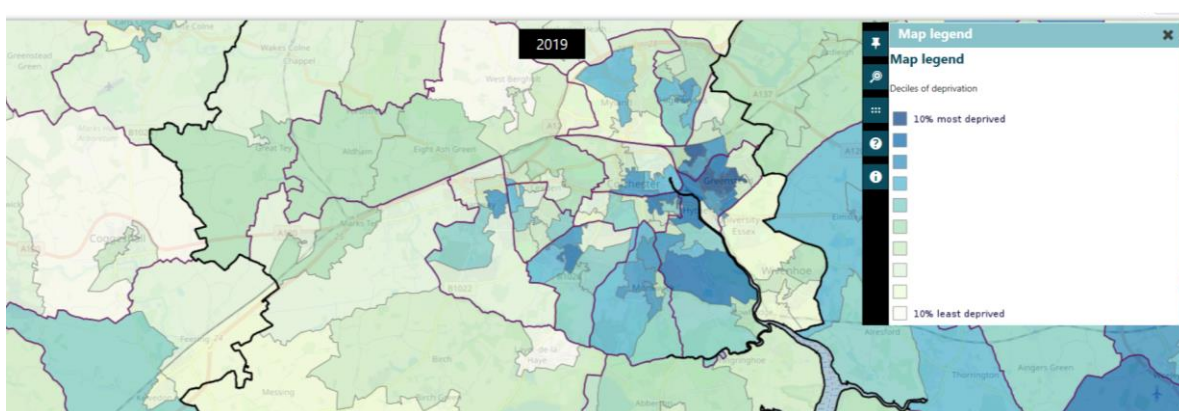
The most deprived LSOA in Colchester by education, skills and training deprivation is now Eastern Approaches North, when in 2015 it was Salary Brook South.

In 2015, Colchester had 35 LSOAs in the top 40% most deprived by education, skills and training deprivation in England, this has since decreased by 3.

Health Deprivation and Disability in Colchester

The health deprivation and disability domain measure the risk of premature death and the impairment of quality of life through poor physical or mental health. The domain measures morbidity, disability and premature mortality but not aspects of behaviour or environment that may be predictive of future health deprivation.

All LSOAs nationally are ranked from most to least deprived, and are then divided into 10 equal groups, or deciles. The analysis of health deprivation and disability domain in this report shows which Colchester LSOAs fall into which of these deciles, with the 1-10% decile representing the most deprived LSOAs in the country, and 91-100% the least.



Source: MHCLG - <https://www.gov.uk/government/statistics/english-indices-of-deprivation-2019>

To view an interactive map showing the proportion of the Colchester population experiencing deprivation relating to health deprivation and disability:

[Click Here](#)

Interactive Map Instructions:

Select location using the pin icon on the right-hand side and type Colchester in 'Local Authority'



Then, click on the 'Map Legend' icon



Finally, ensure the 'Health Deprivation and Disability Domain' is selected by clicking on the cross icon



Summary

Colchester has 31 LSOAs that fall into the top 40% of most deprived LSOAs in the county for this domain. These LSOAs are concentrated in the wards of Berechurch, Greenstead, Old Heath & The Hythe and St Anne's & St John's. Colchester has 3 LSOA in the 10% most deprived in the country, found in the wards of Greenstead and St Anne's & St John's. A full breakdown is provided in table 6 (page 18).

Health Deprivation and Disability Domain by LSOA

The table below shows the LSOAs in Colchester borough that fall into the most deprived 40% by the health deprivation and disability domain in England.

Health & Disability Deprivation Decile	LSOA Name	Ward	Health Deprivation and Disability Rank (where 1 is most deprived)
0-10%	Magnolia	Greenstead	1,550
	Forest	Greenstead	1,688
	St Anne's Estate	St Anne's & St John's	2,840
11-20%	Salary Brook South	Greenstead	5,510
	New Town North	New Town & Christ Church	5,536
	Iceni Square	Shrub End	5,849
	Speedwell	Old Heath & The Hythe	6,101
	East Ward	Greenstead	6,204
	Paxmans	Old Heath & The Hythe	6,404
	Sycamore	Greenstead	6,559
21-30%	Parsons Heath	St Anne's & St John's	6,642
	Blackheath	Berechurch	7,068
	Monkwick	Berechurch	7,104
	Harwich Road	St Anne's & St John's	7,465
	Barnhall	Old Heath & The Hythe	7,501
	Eastern Approaches North	Greenstead	7,854
	Chinook	Highwoods	8,329
	Rayner Road	Shrub End	8,545
	Castle Central	Castle	8,698
	West Mersea Centre	Mersea & Pyefleet	8,963
	Wheatfield Road	Stanway	9,025
	The willows	Berechurch	9,220
	Defoe	Mile End	10,007
31-40%	The Gilbert	Highwoods	10,322
	Collingwood	Prettygate	10,324
	Highwoods East	Highwoods	12,269
	Friday wood	Berechurch	12,320
	Mountbatten	Old Heath & The Hythe	12,452
	Gosbecks	Shrub End	12,982
	Castle East	Castle	12,984
	Berechurch North	Berechurch	13,054

(Table 6: Most deprived LSOAs in Colchester by health deprivation & disability)

The most deprived LSOA in Colchester by the health deprivation & disability domain is Magnolia in the ward of Greenstead, which is ranked as the 1,550th most deprived in England by this measure (out of 32,844 LSOAs nationally).

Berechurch and Greenstead have the highest number of LSOAs which fall into the top 40% most deprived in England by this measure, with 5 LSOAs each.

Population Affected by Health Deprivation and Disability

In Colchester 54,136 people are affected by Health Deprivation and Disability, this equates to 28.12% of the overall population.

The table below shows the Colchester population that falls within the 40% most affected by Health Deprivation and Disability in England.

Health Deprivation and Disability Decile	Number of People Affected	Percentage of Colchester Population
0-10%	4,559	2.37%
11-20%	12,969	6.74%
21-30%	18,610	9.67%
31-40%	17,998	9.35%

Changes in Health Deprivation and Disability since 2015

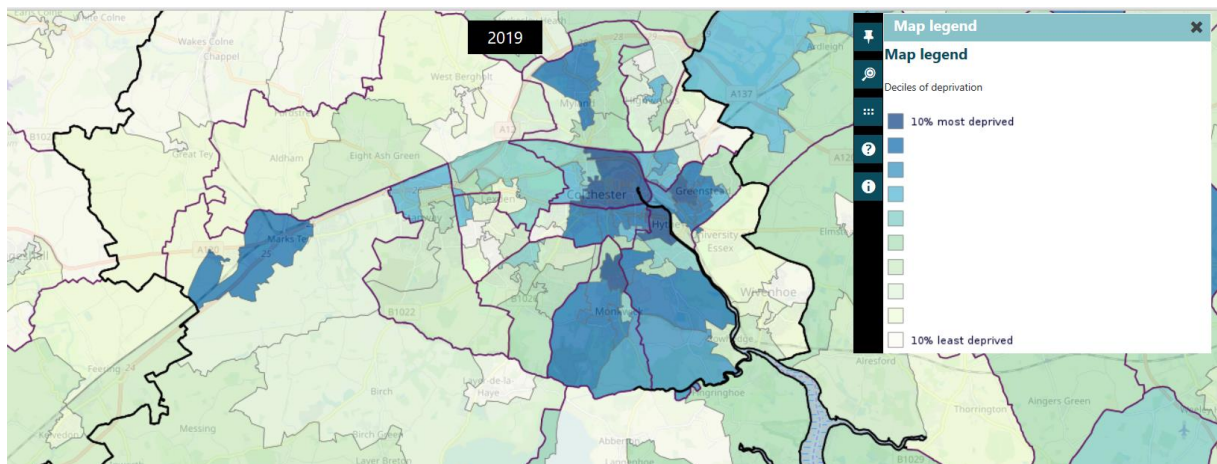
In the 2015 Indices of Deprivation, Colchester had 1 LSOA in the 10% most deprived by the health deprivation and disability domain nationally, which was Magnolia. This has now increased to 3 with Magnolia, Forest and St Anne's Estate all falling within the 10% most deprived decile.

In 2015, Colchester had 30 LSOAs in the top 40% most deprived by the health deprivation and disability domain in England, this has since increased by 1.

Crime Deprivation in Colchester

The crime domain measures the risk of personal and material victimisation at local level.

All LSOAs nationally are ranked from most to least deprived, and are then divided into 10 equal groups, or deciles. The analysis of crime deprivation in this report shows which Colchester LSOAs fall into which of these deciles, with the 1-10% decile representing the most deprived LSOAs in the country, and 91-100% the least.



Source: MHCLG - <https://www.gov.uk/government/statistics/english-indices-of-deprivation-2019>

To view an interactive map showing the proportion of the Colchester population experiencing deprivation relating to crime:

[Click Here](#)

Interactive Map Instructions:

Select location using the pin icon on the right-hand side and type Colchester in 'Local Authority'



Then, click on the 'Map Legend' icon



Finally, ensure the 'Crime Deprivation Domain' is selected by clicking on the handcuff icon



Summary

Colchester has 33 LSOAs that fall into the top 40% of most deprived LSOAs in the county for this domain. These LSOAs are concentrated in the wards of Berechurch, Castle, Greenstead, New Town & Christ Church and Old Heath & The Hythe.

Colchester has 6 LSOAs in the 10% most deprived in the country, found in the wards of Berechurch, Castle, Greenstead and Old Heath & The Hythe. A full breakdown is provided in table 7 (page 21).

Crime Deprivation Domain by LSOA

The table below shows the LSOAs in Colchester borough that fall into the most deprived 40% by the crime deprivation domain in England.

Crime Deprivation Decile	LSOA Name	Ward	Crime Rank (where 1 is most deprived)
0-10%	Castle Central	Castle	1,248
	Castle East	Castle	1,984
	The willows	Berechurch	2,531
	Paxmans	Old Heath & The Hythe	2,921
	Riverside	Castle	3,184
	Forest	Greenstead	3,195
11-20%	Salary Brook South	Greenstead	3,553
	Sycamore	Greenstead	3,677
	Eastern Approaches North	Greenstead	4,055
	Friday wood	Berechurch	4,101
	Speedwell	Old Heath & The Hythe	4,217
	Wimpole Central	New Town & Christ Church	4,664
	Magnolia	Greenstead	4,681
	Defoe	Mile End	4,769
	New Town Garrison	New Town & Christ Church	5,190
	Butt Road	New Town & Christ Church	5,365
	New Town North	New Town & Christ Church	5,571
	Barnhall	Old Heath & The Hythe	6,039
	Marks Tey	Marks Tey & Layer	6,227
	Monkwick	Berechurch	6,248
	Blackheath	Berechurch	6,342
21-30%	Donyland woods	Old Heath & The Hythe	7,993
	East Ward	Greenstead	8,349
	St Anne's Estate	St Anne's & St John's	9,724
31-40%	Winchester Road	New Town & Christ Church	10,018
	Harwich Road	St Anne's & St John's	10,022
	Collingwood	Prettygate	10,139
	St Marys	Castle	10,588
	Salary Brook North	Greenstead	11,478
	Warren Farm	Stanway	12,406
	Broadlands	St Anne's & St John's	12,433
	Maypole	Tiptree	12,576
	Chinook	Highwoods	12,912

(Table 7: Most deprived LSOAs in Colchester by crime)

The most deprived LSOA in Colchester by the crime deprivation domain is Castle Central in the ward of Castle, which is ranked as the 1,248th most deprived in England by this measure (out of 32,844 LSOAs nationally). Castle also has a further 2 LSOAs which fall into the 10% most deprived in England.

Greenstead has the most LSOAs which fall into the 40% most deprived in England with 6, while New Town & Christ Church is second highest with 5.

Population Affected by Crime Deprivation

In Colchester 61,039 people are affected by Crime Deprivation, this equates to 31.70% of the overall population.

The table below shows the Colchester population that falls within the 40% most affected by Crime deprivation in England.

Crime Deprivation Decile	Number of People Affected	Percentage of Colchester Population
12,610	192,523	6.55%
29,902	192,523	15.53%
3,818	192,523	1.98%
14,709	192,523	7.64%

Changes in Crime Deprivation since 2015

There has been a significant decrease in the number of Colchester LSOAs in the top 10% most deprived by crime since 2015 with the number falling from 11 to 6.

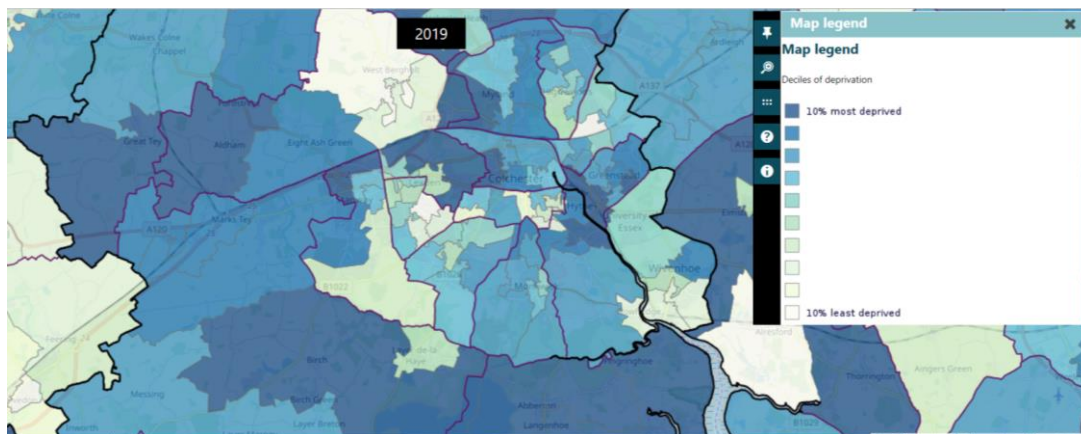
The most deprived LSOA in Colchester by crime deprivation is Castle Central. This has remained the same since 2015.

In 2015 Colchester had 33 LSOAs in the top 40% most deprived by crime deprivation in England, this remains unchanged.

Barriers to Housing and Services in Colchester

The Barriers to Housing and Services domain measure the physical and financial accessibility of housing and local services. The indicators fall into two sub-domains: 'geographical barriers', which relate to the physical proximity of local services, and 'wider barriers' which includes issues relating to access to housing such as affordability and homelessness.

All LSOAs nationally are ranked from most to least deprived, and are then divided into 10 equal groups, or deciles. The analysis of barriers to housing and services deprivation in this report shows which Colchester LSOAs fall into which of these deciles, with the 1-10% decile representing the most deprived LSOAs in the country, and 91-100% the least.



Source: MHCLG - <https://www.gov.uk/government/statistics/english-indices-of-deprivation-2019>

To view an interactive map showing the proportion of the Colchester population experiencing deprivation relating to barriers to housing and services:

[Click Here](#)

Interactive Map Instructions:

Select location using the pin icon on the right-hand side and type Colchester in 'Local Authority'



Then, click on the 'Map Legend' icon



Finally, ensure the 'Barriers to Housing and Services Deprivation Domain' is selected by clicking on the house icon



Summary

Colchester has 65 LSOAs that fall into the top 40% of most deprived LSOAs in the county for this domain. These LSOAs are concentrated in the wards of Castle, Berechurch, Greenstead, Marks Tey & Layer, Old Heath & The Hythe and Rural North. Colchester also has 14 LSOAs in the 10% most deprived in the country. A full breakdown is provided in table 8 (page 24).

(English Indices of Multiple Deprivation 2019)

Barriers to Housing and Services Domain by LSOA

The table below shows the LSOAs in Colchester borough that fall into the most deprived 40% by the barriers to housing and services domain in England.

Barriers to Housing & Services Deprivation Decile	LSOA Name	Ward	Barriers to Housing & Services Rank (where 1 is most deprived)
0-10%	Eastern Approaches South	Old Heath & The Hythe	64
	Pyefleet Majority	Mersea & Pyefleet	240
	Birch & Wigborough	Marks Tey & Layer	325
	Salary Brook North	Greenstead	1,584
	Tey & Aldham	Rural North	1,646
	Boxted & Horkesley	Rural North	2,194
	Warren Farm	Stanway	2,224
	Braiswick	Mile End	2,457
	Spring Lane	Lexden & Braiswick	2,730
	Whitehall	Old Heath & The Hythe	2,844
	St Marys	Castle	2,885
	Eastern Approaches North	Greenstead	3,077
	Pyefleet North West	Mersea & Pyefleet	3,088
	East Ward	Greenstead	3,147
11-20%	Paxmans	Old Heath & The Hythe	3,392
	Stour view	Rural North	3,454
	Longridge	Greenstead	3,902
	St Margaret's Cross	Rural North	4,200
	Berechurch North	Berechurch	4,202
	Copford and West	Marks Tey & Layer	4,309
	Castle Central	Castle	4,450
	Fordham Heath	Lexden & Braiswick	4,532
	Cuckoo Farm	Mile End	4,552
	Little Tey	Marks Tey & Layer	5,268
	Marks Tey	Marks Tey & Layer	5,388
	Magnolia	Greenstead	5,476
	Dedham Heath	Rural North	5,500
	Barnhall	Old Heath & The Hythe	5,622
	Mountbatten	Old Heath & The Hythe	5,702
	Wivenhoe Boundary	Wivenhoe	5,944
	Turner Rise	Mile End	6,288
	Lakelands	Stanway	6,326

(Table continued page 26)

Barriers to Housing & Services Deprivation Decile	LSOA Name	Ward	Barriers to Housing & Services Rank (where 1 is most deprived)
21-30%	Salary Brook South	Greenstead	6,723
	Chapel Viaduct	Rural North	6,744
	Maypole	Tiptree	6,971
	The willows	Berechurch	7,013
	Riverside	Castle	7,091
	Forest	Greenstead	7,576
	Friday wood	Berechurch	7,597
	Messing & Marney	Marks Tey & Layer	7,830
	Gavin Way West	Highwoods	7,859
	Harwich Road	St Anne's & St John's	8,080
	Alamein Road & Homefield Road	Shrub End	8,208
	Strood	Mersea & Pyefleet	8,335
	Speedwell	Old Heath & The Hythe	8,514
	North Station Rd	Castle	8,763
	St Anne's Estate	St Anne's & St John's	8,865
	Sycamore	Greenstead	8,942
	Donyland woods	Old Heath & The Hythe	9,058
	Butt Road	New Town & Christ Church	9,083
	Monkwick	Berechurch	9,621
31-40%	Cambridge Road	New Town & Christ Church	10,554
	Highwoods East	Highwoods	10,694
	Gosbecks	Shrub End	10,732
	James Carter	Prettygate	10,802
	Defoe	Mile End	10,970
	Wheatfield Road	Stanway	11,351
	Broadlands	St Anne's & St John's	11,807
	Littlefields	Shrub End	11,885
	Blackheath	Berechurch	11,933
	Castle East	Castle	11,999
	Welshwood	St Anne's & St John's	12,252
	New Town North	New Town & Christ Church	12,472
	Peace Road	Stanway	12,605
	The Gilbert	Highwoods	12,864

(Table 8: Most deprived LSOAs in Colchester by barriers to housing & services deprivation)

The most deprived LSOA in Colchester by the barriers to housing and services deprivation domain is Eastern Approaches South in the ward of ??????, which is ranked as the 64th most deprived in England by this measure (out of 32,844 LSOAs nationally). Pyefleet Majority LSOA, Birch & Wigborough, Salary Brook North, Tey & Aldham, Boxted & Horkesley, Warren Farm, Braiswick, Spring Lane, Whitehall, St Marys, Eastern Approaches North, Pyefleet North West and East Ward also fall into the 10% most deprived in England by barriers to housing and services deprivation.

Old Heath & The Hythe and Rural North have the highest number of LSOAs which fall into the top 40% most deprived in England, with 6 LSOAs each, while Marks Tey & Layer are second with 4.

Population Affected by Barriers to Housing and Services Deprivation

In Colchester 123,354 people are affected by Barriers to Housing and Services Deprivation, this equates to 64.07% of the overall population.

The table below shows the Colchester population that falls within the 40% most affected by Barriers to Housing and Services Deprivation in England.

Barriers to Housing and Services Deprivation Decile	Number of People Affected	Percentage of Colchester Population
0-10%	26,692	13.86%
11-20%	35,911	18.65%
21-30%	35,324	18.35%
31-40%	25,427	13.21%

Changes in Barriers to Housing and Services Deprivation since 2015

In the 2015 Indices of Deprivation, Colchester had 6 LSOAs in the 10% most deprived by income deprivation nationally. Since then, the number of LSOAs in the 10% most deprived has increased to 14.

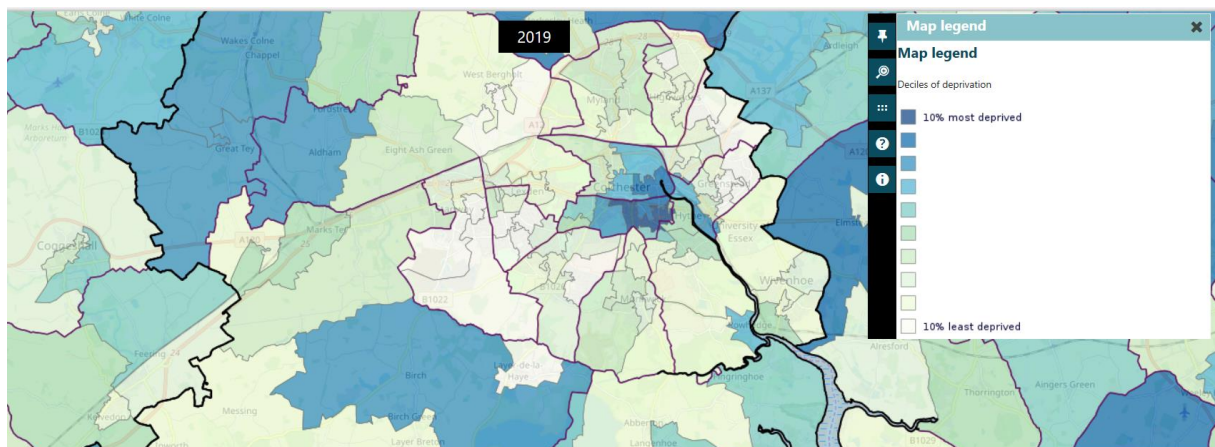
Salary Brook North LSOA, Warren Farm, Braiswick, Spring Lane, Whitehall, St Marys, Eastern Approaches North, Pyefleet North West, East Ward have all move up to the 10% most deprived decile, with Stour View moving down to the 11-20% category.

In 2015, Colchester had 45 LSOAs in the top 40% most deprived by barriers to housing and services deprivation in England. This has since significantly increased to 65 LSOAs.

Living Environment in Colchester

The living environment deprivation domain measures the quality of the local environment. The indicators fall into two sub-domains. The 'indoors' living environment measures the quality of housing; while 'outdoors' living environment contains measures of air quality and road traffic accidents.

All LSOAs nationally are ranked from most to least deprived, and are then divided into 10 equal groups, or deciles. The analysis of living environment deprivation in this report shows which Colchester LSOAs fall into which of these deciles, with the 1-10% decile representing the most deprived LSOAs in the country, and 91-100% the least.



Source: MHCLG - <https://www.gov.uk/government/statistics/english-indices-of-deprivation-2019>

To view an interactive map showing the proportion of the Colchester population experiencing deprivation relating to living environment:

[Click Here](#)

Interactive Map Instructions:

Select location using the pin icon on the right-hand side and type Colchester in 'Local Authority'



Then, click on the 'Map Legend' icon



Finally, ensure the 'Living Environment Deprivation Domain' is selected by clicking on the tree icon



Summary

Colchester has 17 LSOAs that fall into the top 40% of most deprived LSOAs in the county for this domain. These LSOAs are concentrated in the wards of Castle, New Town & Christ Church and Rural North.

Colchester has 3 LSOAs in the 10% most deprived in the country, all found in the ward of New Town & Christ Church. A full breakdown is provided in table 9 (page 28).

Living Environment Domain by LSOA

The table below shows the LSOAs in Colchester borough that fall into the most deprived 40% by the living environment deprivation domain in England.

Living Environment Deprivation Decile	LSOA Name	Ward	Living Environment Rank (where 1 is most deprived)
0-10%	Wimpole Central	New Town & Christ Church	2,503
	Winchester Road	New Town & Christ Church	2,691
	New Town Garrison	New Town & Christ Church	2,887
11-20%	New Town North	New Town & Christ Church	4,102
	St Margaret's Cross	Rural North	6,419
	Castle East	Castle	6,562
	Boxted & Horkesley	Rural North	6,565
21-30%	Eastern Approaches South	Old Heath & The Hythe	7,621
	Butt Road	New Town & Christ Church	7,635
	Tey & Aldham	Rural North	7,806
	Chappel Viaduct	Rural North	8,543
	Birch & Wigborough	Marks Tey & Layer	8,784
31-40%	Rowhedge	Old Heath & The Hythe	10,876
	Castle Central	Castle	11,853
	Dedham Heath	Rural North	12,031
	East Ward	Greenstead	12,557
	Riverside	Castle	12,698

(Table 9: Most deprived LSOAs in Colchester by living environment deprivation)

The most deprived LSOA in Colchester by the living environment domain is Wimpole Central in the ward of New Town & Christ Church, which is ranked as the 2,503rd most deprived in England by this measure (out of 32,844 LSOAs nationally). Winchester Road and New Town Garrison, both also in New Town & Christ Church, also fall into the 10% most deprived in England by living environment deprivation.

The New Town & Christ Church and Rural North wards have the highest number of LSOAs which fall into the top 40% most deprived in England by this measure, with 5 LSOAs each, while Castle is second with 3.

Population Affected by Living Environment Deprivation

In Colchester 34,815 people are affected by Living Environment Deprivation, this equates to 18.08% of the overall population.

The table below shows the Colchester population that falls within the 40% most affected by Living Environment Deprivation in England.

Living Environment Deprivation Decile	Number of People Affected	Percentage of Colchester Population
0-10%	6,822	3.54%
11-20%	8,398	4.36%
21-30%	10,350	5.38%
31-40%	9,245	4.80%

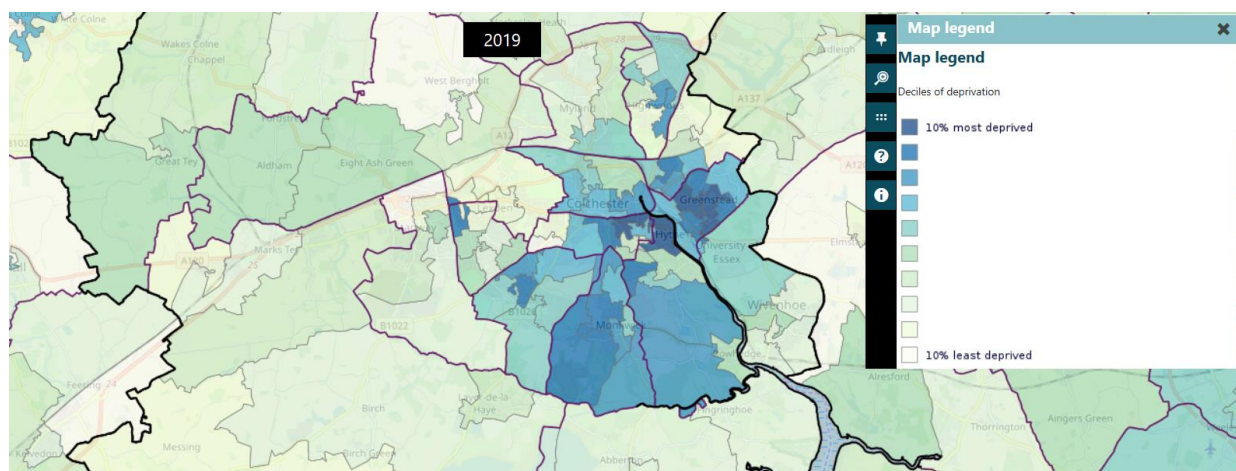
Changes in Living Environment Deprivation since 2015

In the 2015 Indices of Deprivation, Colchester had 3 LSOAs in the 10% most deprived by living environment deprivation nationally, this remains unchanged. New Town North was the most deprived LSOA in Colchester by living environment deprivation in 2015 and has since move down to the 11-20% decile.

In 2015, Colchester had 20 LSOAs in the top 40% most deprived by living environment deprivation in England, this has since decreased by 3.

Income Deprivation Affecting Children

The income deprivation affecting children index (IDACI) measures the proportion of all children aged 0 to 15 living in income deprived families. It is a subset of the Income Deprivation Domain which measures the proportion of the population in an area experiencing deprivation relating to low income. The definition of low income used includes both those people that are out-of-work, and those that are in work but who have low earnings (and who satisfy the respective means tests).



Source: MHCLG - <https://www.gov.uk/government/statistics/english-indices-of-deprivation-2019>

To view an interactive map showing the proportion of the Colchester population experiencing deprivation relating to income deprivation affecting children:

[Click Here](#)

Interactive Map Instructions:

Select location using the pin icon on the right-hand side and type Colchester in 'Local Authority'



Then, click on the 'Map Legend' icon



Finally, ensure the 'Income Deprivation Affecting Children Domain' is selected by clicking on the tree icon



Summary

Colchester has 35 LSOAs that fall into the top 40% of most deprived LSOAs in the county for this domain. These LSOAs are concentrated in the wards of Castle, Greenstead, New Town & Christ Church and Old Heath & The Hythe.

Colchester has 5 LSOAs in the 10% most deprived in the country, found in the wards of Greenstead, New Town & Christ Church and Old Heath & The Hythe. A full breakdown is provided in table 10 (page 31).

Income Deprivation Affecting Children Domain by LSOA

The table below shows the LSOAs in Colchester that fall into the most deprived 40% by the income deprivation affecting children domain in England.

Income Deprivation Affecting Children Decile	LSOA Name	Ward	Income Deprivation Affecting Children Rank (where 1 is most deprived)
0-10%	Salary Brook South	Greenstead	752
	Paxmans	Old Health & The Hythe	1,213
	Magnolia	Greenstead	1,884
	New Town North	New Town & Christ Church	2,857
	Forest	Greenstead	2,938
11-20%	St Anne's Estate	St Anne's & St John's	4,120
	Eastern Approaches North	Greenstead	4,189
	Iceni Square	Shrub End	4,297
	Salary Brook North	Greenstead	4,549
	Friday wood	Berechurch	4,827
	Collingwood	Prettygate	5,150
	Barnhall	Old Health & The Hythe	5,213
	Monkwick	Berechurch	5,978
	New Town Garrison	New Town & Christ Church	6,015
	Sycamore	Greenstead	6,346
21-30%	Donyland woods	Old Health & The Hythe	6,888
	Highwoods East	Highwoods	7,630
	Castle East	Castle	7,799
	Rayner Road	Shrub End	8,307
	Speedwell	Old Health & The Hythe	8,774
	Chinook	Highwoods	8,803
	Berechurch North	Berechurch	9,024
	Blackheath	Berechurch	9,450
	Harwich Road	St Anne's & St John's	9,555
31-40%	Butt Road	New Town & Christ Church	9,870
	St Marys	Castle	11,035
	Maypole	Tiptree	11,104
	Laver Road	Shrub End	11,161
	Wimpole Central	New Town & Christ Church	11,518
	East Ward	Greenstead	11,754
	Longridge	Greenstead	11,807
	Castle Central	Castle	11,891
	Eastern Approaches South		12,018
	The willows	Berechurch	12,103
	Parsons Heath	St Anne's & St John's	12,656

(Table 11: Most deprived LSOAs in Colchester by income deprivation affecting children)

The most deprived LSOA in Colchester by the income deprivation affecting children is Salary Brook South in the ward of Greenstead, which is ranked as the 752nd most deprived in England by this measure (out of 32,844 LSOAs nationally). Paxmans, Magnolia, New Town North and Forest also fall into the 10% most deprived in England by income deprivation affecting children.

Population Affected by Income Deprivation Affecting Children

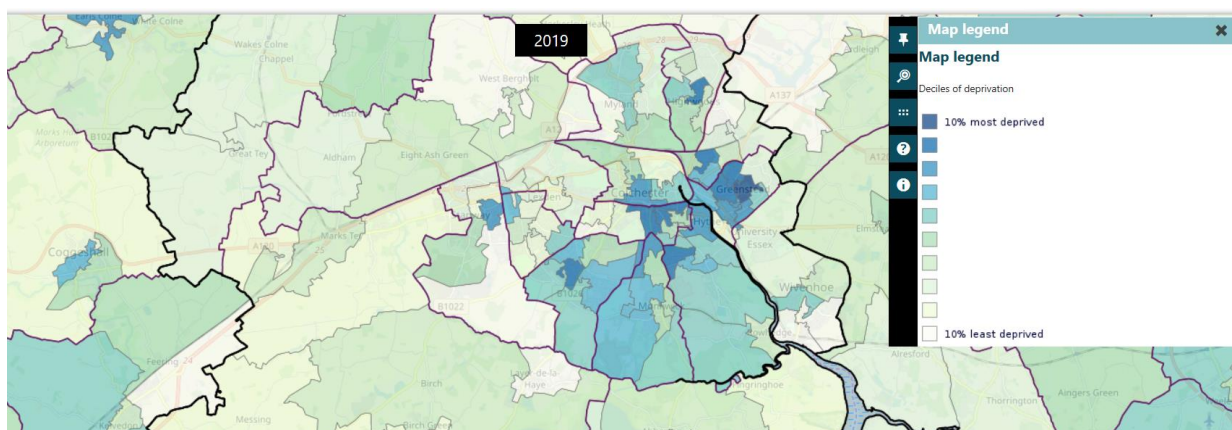
In Colchester 64,974 people are affected by income deprivation affecting children, this equates to 33.75% of the overall population.

The table below shows the Colchester population that falls within the 40% most affected by income deprivation affecting children in England.

Income Deprivation Affecting Children Decile	Number of People Affected	Percentage of Colchester Population
0-10%	10,103	5.25%
11-20%	18,002	9.35%
21-30%	14,465	7.51%
31-40%	22,404	11.64%

Income Deprivation Affecting Older People

The income deprivation affecting older people index (IDAOPI) measures the proportion of all those aged 60 or over who experience income deprivation. It is a subset of the Income Deprivation Domain which measures the proportion of the population in an area experiencing deprivation relating to low income. The definition of low income used includes both those people that are out-of-work, and those that are in work but who have low earnings (and who satisfy the respective means tests).



Source: MHCLG - <https://www.gov.uk/government/statistics/english-indices-of-deprivation-2019>

To view an interactive map showing the proportion of the Colchester population experiencing deprivation relating to income deprivation affecting older people:

[Click Here](#)

Interactive Map Instructions:

Select location using the pin icon on the right-hand side and type Colchester in 'Local Authority'



Then, click on the 'Map Legend' icon



Finally, ensure the 'Income Deprivation Affecting Older People Domain' is selected by clicking on the tree icon



Summary

Colchester has 24 LSOAs that fall into the top 40% of most deprived LSOAs in the county for this domain. These LSOAs are concentrated in the wards of Berechurch, Greenstead, Old Heath & The Hythe and Shrub End.

Colchester has 1 LSOAs in the 10% most deprived in the country found in the ward of Greenstead. A full breakdown is provided in table 11 (page 34).

Income Deprivation Affecting Older People Domain by LSOA

The table below shows the LSOAs in Colchester that fall into the most deprived 40% by the income deprivation affecting older people domain in England.

Income Deprivation Affecting Older People Decile	LSOA Name	Ward	Income Deprivation Affecting Old People Rank (where 1 is most deprived)
0-10%	Magnolia	Greenstead	2,136
11-20%	New Town Garrison	New Town & Christ Church	3,289
	Chinook	Highwoods	3,579
	Sycamore	Greenstead	3,937
	St Anne's Estate	St Anne's & St John's	4,434
	New Town North	New Town & Christ Church	4,481
	Iceni Square	Shrub End	5,116
	Barnhall	Old Health & The Hythe	6,186
	Forest	Greenstead	6,387
21-30%	Wheatfield Road	Stanway	7,462
	Salary Brook South	Greenstead	7,477
	Berechurch North	Berechurch	8,319
	Eastern Approaches North	Greenstead	8,752
	Paxmans	Old Health & The Hythe	8,878
	Castle Central	Castle	9,044
31-40%	Collingwood	Prettygate	9,946
	East Ward	Greenstead	10,054
	Harwich Road	St Anne's & St John's	10,419
	Alamein Road & Homefield Road	Shrub End	10,677
	Rayner Road	Shrub End	11,175
	Monkwick	Berechurch	11,540
	Maypole	Tiptree	12,515
	Mountbatten	Old Health & The Hythe	12,594
	Friday wood	Berechurch	12,595

(Table 12: Most deprived LSOAs in Colchester by income deprivation affecting older people)

The most deprived LSOA in Colchester by the income deprivation affecting older people is Magnolia in the ward of Greenstead, which is ranked as the 2,136th most deprived in England by this measure (out of 32,844 LSOAs nationally). The Greenstead ward has a further 5 LSOAs that fall into the 10% most deprived in England by income deprivation affecting older people, the most of any Colchester ward.

Population Affected by Income Deprivation Affecting Older People

In Colchester 44,718 people are affected by income deprivation affecting older people, this equates to 23.23% of the overall population.

The table below shows the Colchester population that falls within the 40% most affected by income deprivation affecting older people in England.

Income Deprivation Affecting Older People Decile	Number of People Affected	Percentage of Colchester Population
0-10%	1,679	0.87%
11-20%	14,689	7.63%
21-30%	12,125	6.30%
31-40%	16,225	8.43%