



WILDLIFE TRAIL



Duration: 30 minutes

Suitable for under 5's

On behalf of Colchester Borough Council, welcome to Colchester's Castle Park. Please enjoy your visit.



Take care:
you are responsible for the safety of yourself and your party. **Respect Covid-19** social distancing and group gathering guidelines.

Respect
any ancient monument and remember to put your rubbish in a bin or take it home with you.



The park is located at the edge of the town centre and the nearest **car parks** are **Priory Street**, **Britannia** and **Leisure World Colchester**: colchester.gov.uk/parking.

If you don't want to drive why not catch the bus to Colchester High Street?

Please check Castle Park **opening hours** prior to starting the trail colchester.gov.uk/parks

Recycle this sheet if you printed it out at home



INTRODUCTION



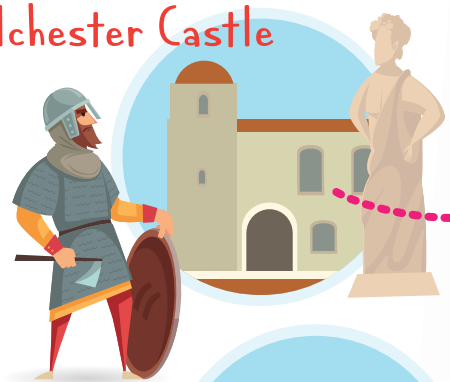
These simple tasks are designed to give children under the age of 5 the chance to explore the Park and get to know the plants and animals that live here.



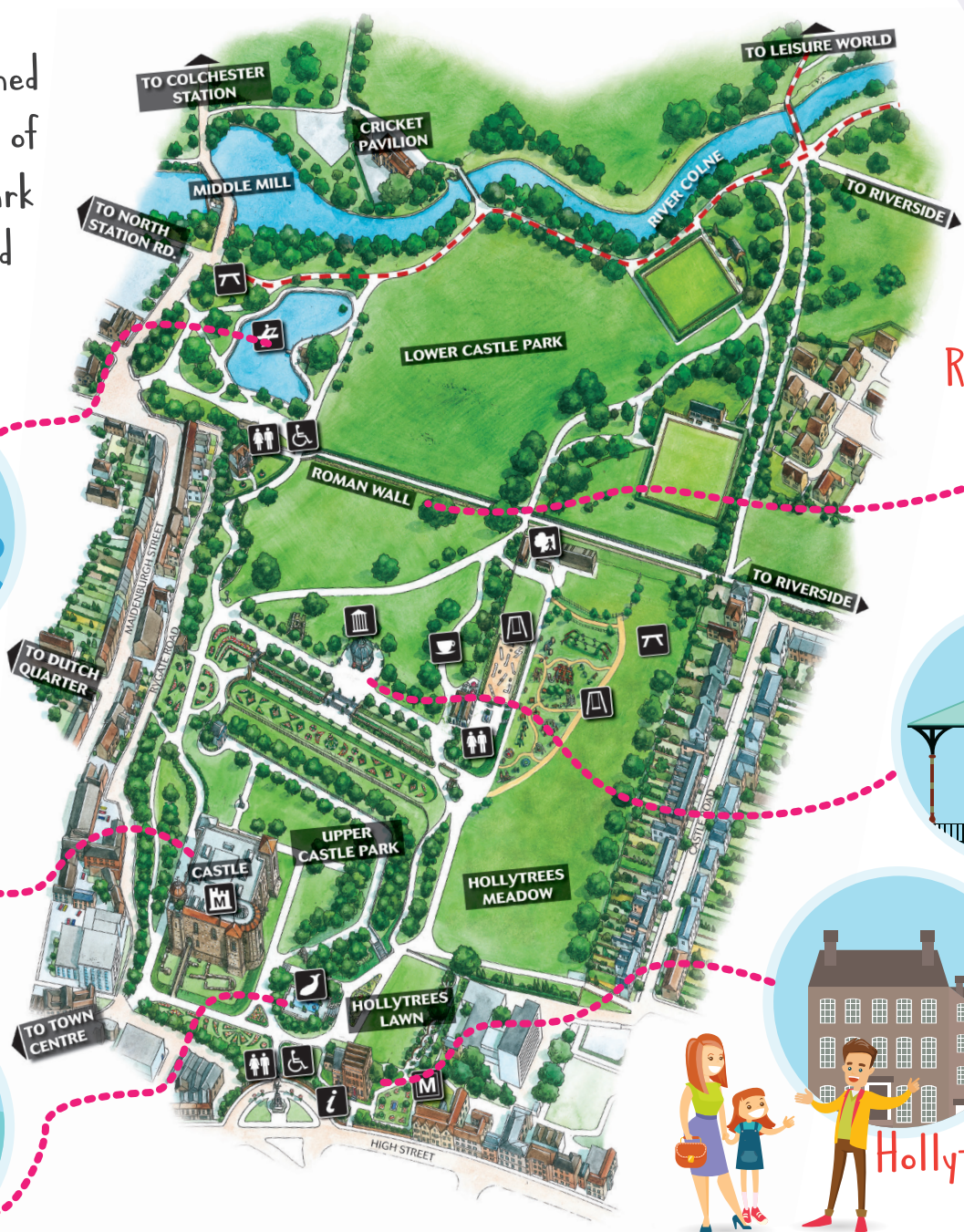
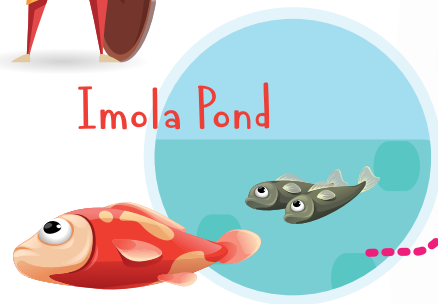
Boating Lake



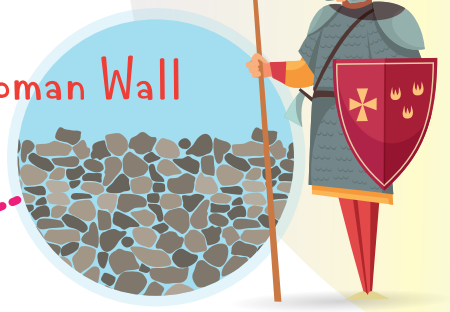
Colchester Castle



Imola Pond



Roman Wall



Bandstand

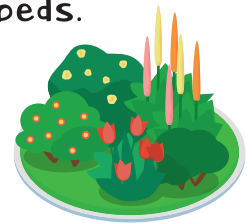


Hollytrees



1 Shapes

Find 3 different shaped flower beds.
What shapes are they?



How many sides does the bandstand have?

.....

Draw the outline of a tree:



We'd love to see photographs taken on the trail. Why not share your pictures with us at [@YourColchester](#) [@EnjoyColchester](#) or [@Better Colchester](#) using [#ColchesterCastleParkTrail](#)

2 Animals

How many squirrels can you count in 3 minutes?



.....



How many ducks are on the boating lake?

.....



Can you count 5 birds while they fly?



.....



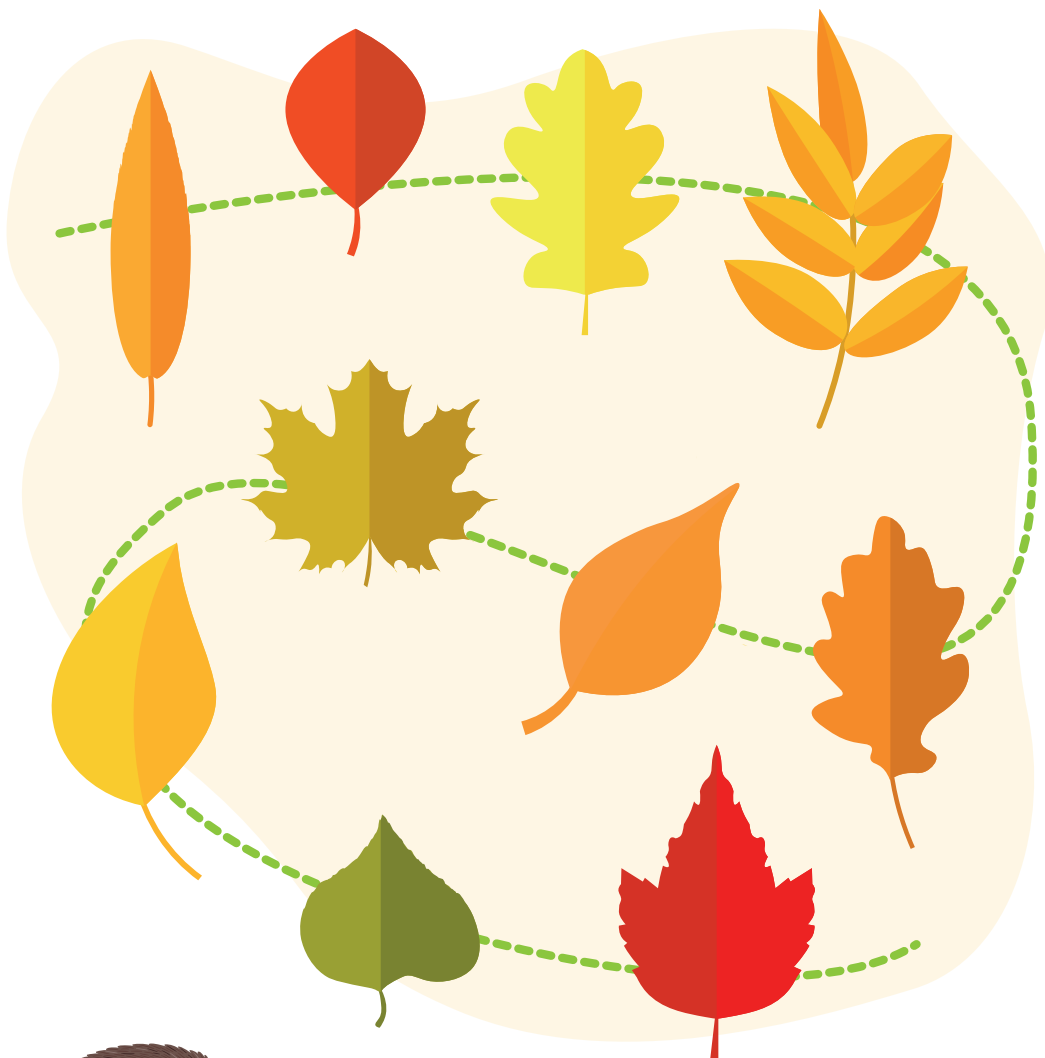
How many fish can you count in the Imola fishpond?

.....



3 Plants

Can you find three different shaped leaves?



Find a flower that you like, what colour is it?
(remember not to pick it!) Draw a flower in
the box below.



Have a go at playing pooh sticks from the
cricket ground bridge
in the Lower Park.



We hope you enjoyed this trail. Why not check out what
else we have to offer at colchester.gov.uk/parks