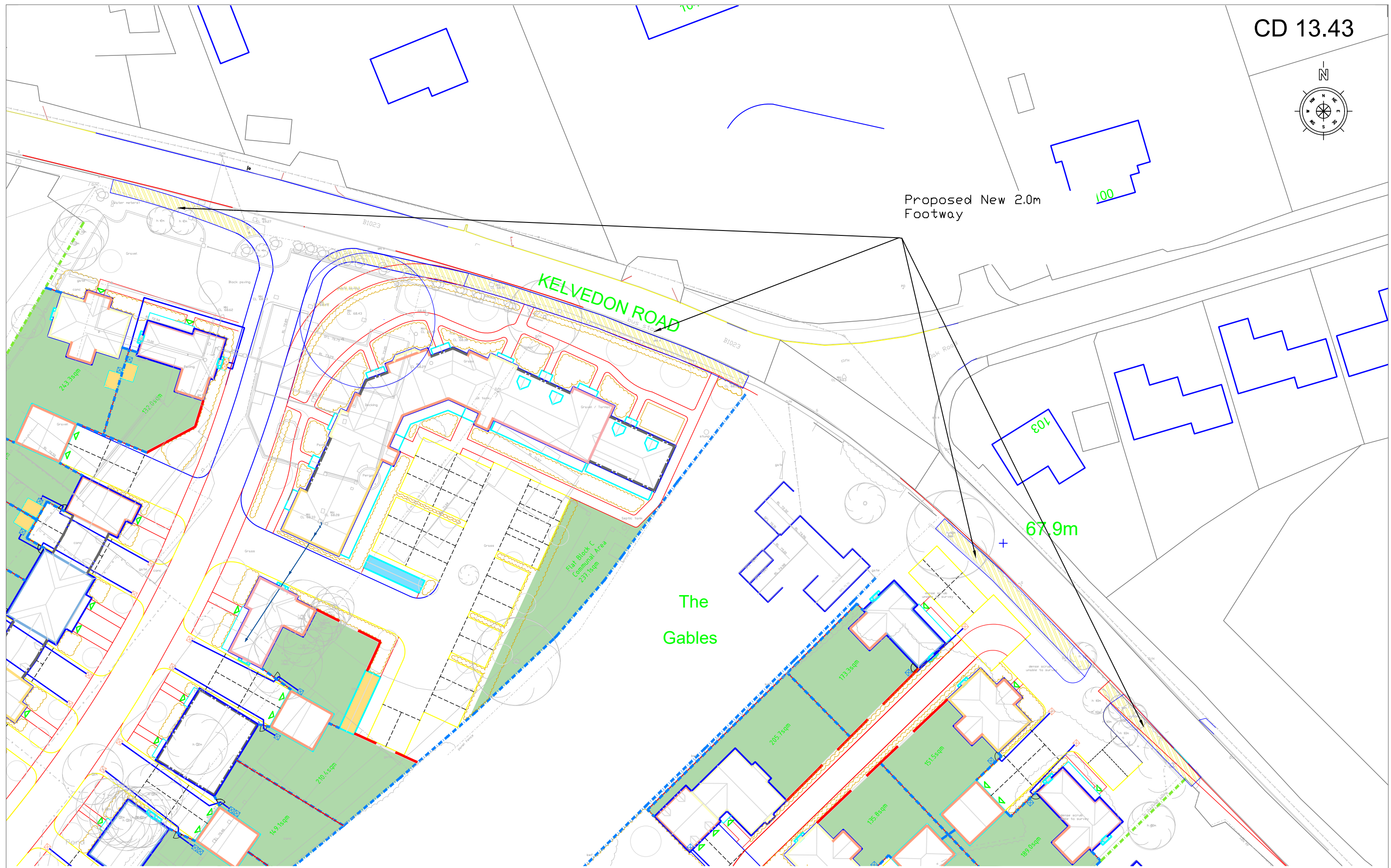


Proposed New 2.0m Footway

KELVEDON ROAD

The Gables

67.9m



client: Marden Homes

project: Kelvedon Road Tiptree

discipline: Transport Planning

title: Kelvedon Road Proposed Pedestrian Access Improvements

status: Planning (not for construction)

project no. JTP 472

date: 27/07/2021

drawn

chk'd SAA

scale @ A3 1:200

Revision

dwg no.

DR12