

Crossing point to bus stop. Exact location to be agreed with ECC

Proposed New 2.0m Footway

Existing Footway

Proposed New 2.0m Footway

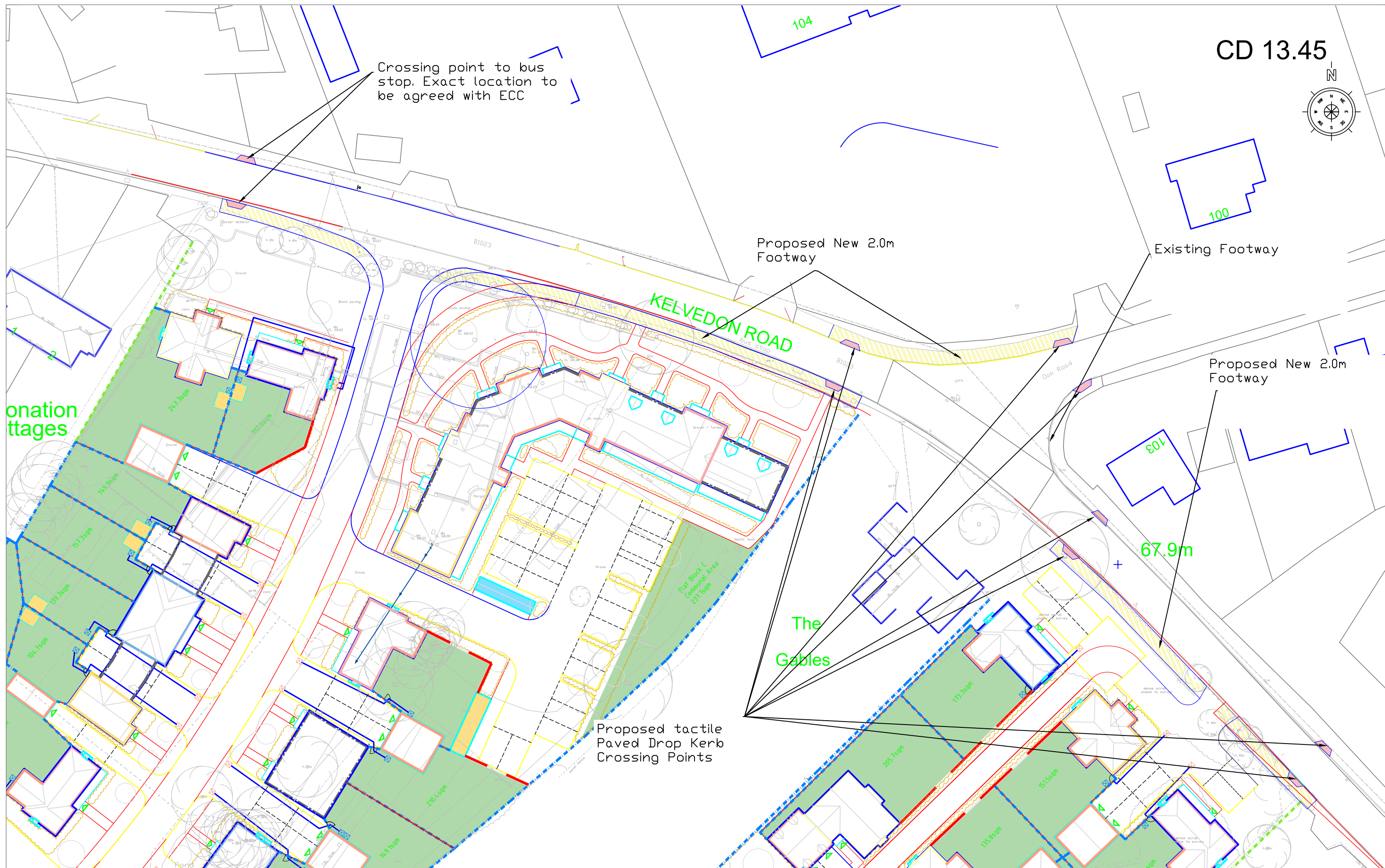
KELVEDON ROAD

Donation stages

The Gables

Proposed tactile Paved Drop Kerb Crossing Points

67.9m



client: Marden Homes

project: Kelvedon Road Tiptree

discipline: Transport Planning

title: Oak Road Extended Pedestrian Access Improvements

status: Planning (not for construction)

project no. JTP 472

date: 27/07/2021

drawn

chk'd: SAA

scale @ A3 1:200

Revision

dwg no.

DR14

