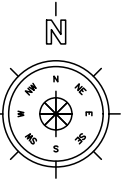


CD 13.46



Crossing point to bus stop. Exact location to be agreed with ECC

Proposed New 2.0m Footway

Existing Footway

KELVEDON ROAD

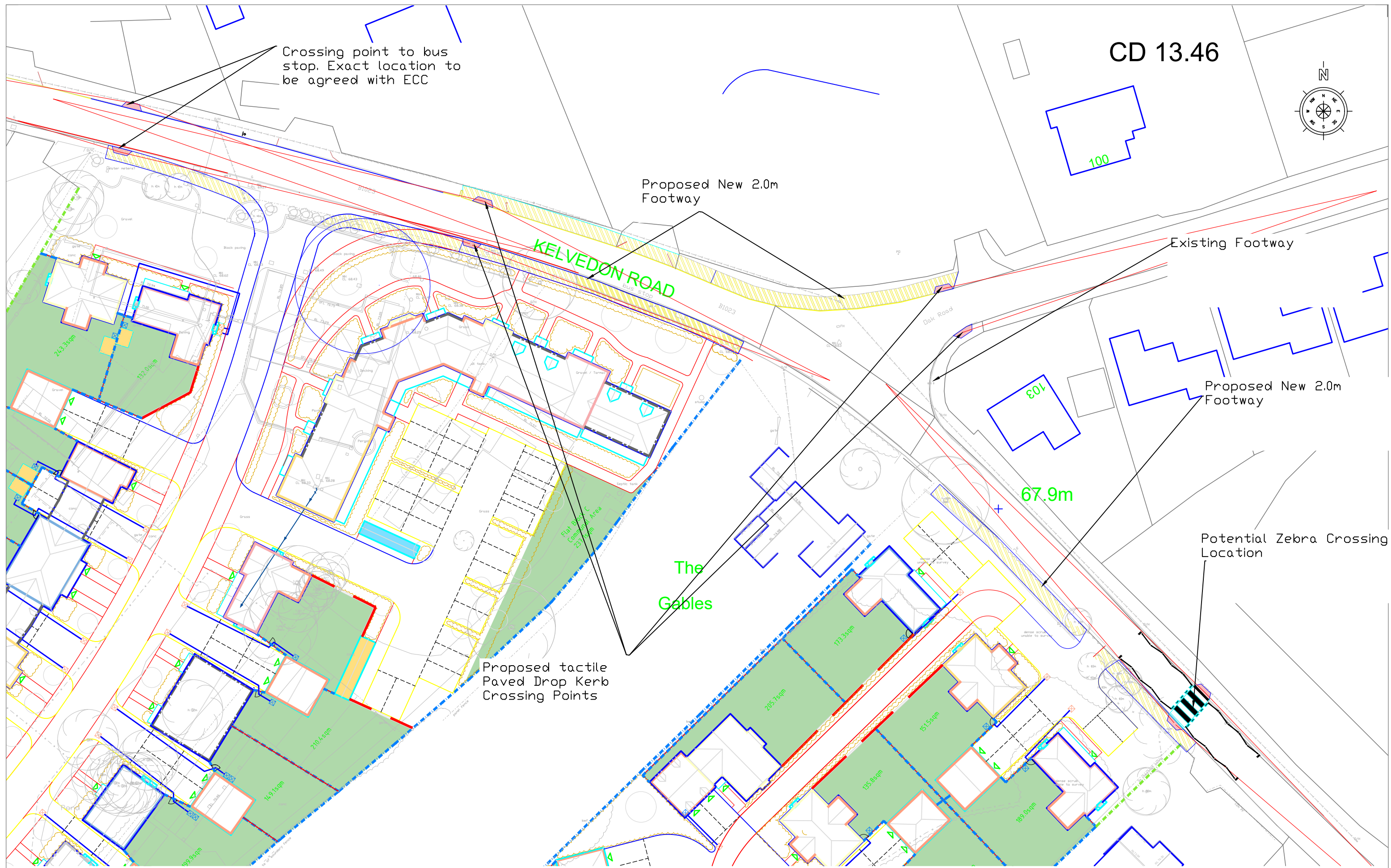
Proposed New 2.0m Footway

67.9m

Potential Zebra Crossing Location

The Gables

Proposed tactile Paved Drop Kerb Crossing Points



client: Marden Homes

project: Kelvedon Road Tiptree

discipline: Transport Planning

title: Oak Road Extended Pedestrian Access Improvements with Zebra Crossing

status: Planning (not for construction)

project no. JTP 472

date: 27/07/2021

drawn

chk'd: SAA

scale @ A3 1:500

Revision

a

dwg no.

DR15

