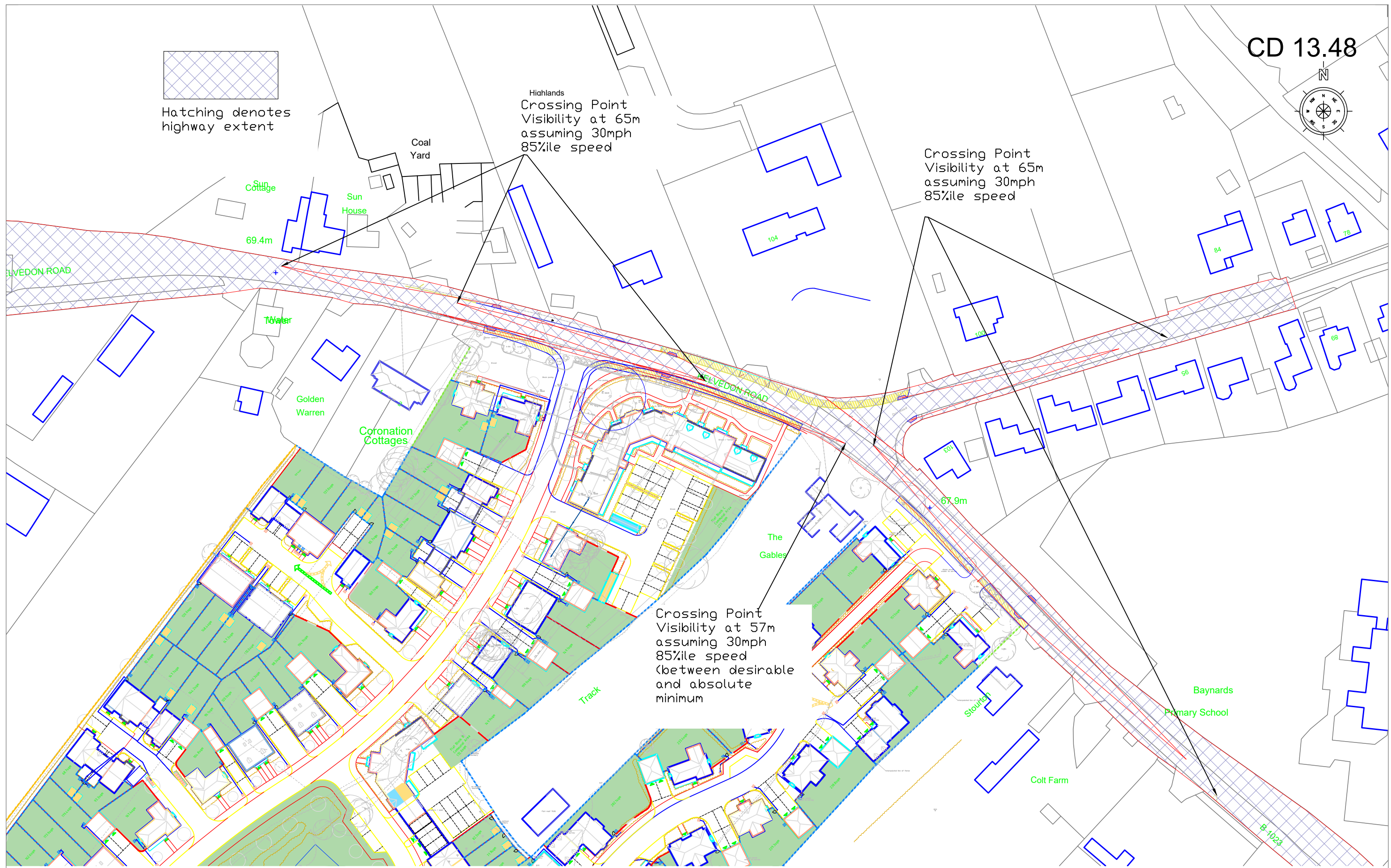


Hatching denotes highway extent

Highlands
Crossing Point
Visibility at 65m
assuming 30mph
85%ile speed

Crossing Point
Visibility at 65m
assuming 30mph
85%ile speed

Crossing Point
Visibility at 57m
assuming 30mph
85%ile speed
(between desirable
and absolute
minimum



client: Marden Homes	title: Oak Road Extended Pedestrian Access Improvements	date: 27/07/2021	scale @ A3 1:1000
project: Kelvedon Road Tiptree	status: Planning (not for construction)	drawn	Revision a
discipline: Transport Planning	project no. JTP 472	chk'd: SAA	dwg no. DR17

