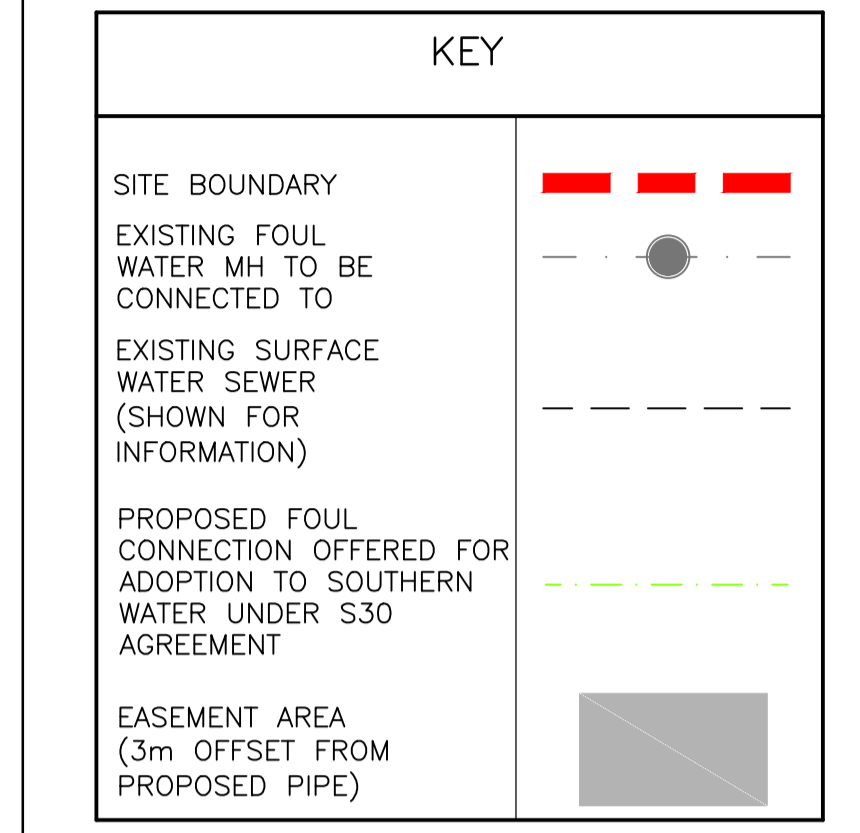




KEY PLAN (N.T.S)

Manhole Number	Cover Level	Connections	Pipe			Manhole Size	Types		
			Code	Inverts	Diams Inv-soff		Manhole	Cover	
F55	8.770	2	1	6.005	5.410	150	1200	A	D400
	3.210		2	1.012	5.410	150			
F56	7.200	1	0	1.013	5.410	150	1200	A	D400
	3.880		1	1.014	3.170	150			
F57	7.200	1	0	1.014	2.940	150	1200	A	D400
	4.110		1	1.015	2.940	150			
EXISTING MANHOLE	7.220	1	0	1.015	2.830	150	Existing	D400	
	4.240		1	1.015	2.830	150			

GENERAL NOTES
 1. THIS DRAWING IS TO BE READ IN CONJUNCTION WITH THE ARCHITECTS, SPECIALISTS AND ENGINEERS DRAWINGS AND SPECIFICATIONS. ANY DISCREPANCIES ARE TO BE REPORTED TO THE ARCHITECT/ENGINEER IMMEDIATELY.
 2. THIS DRAWING IS TO BE READ IN CONJUNCTION WITH RLT DRAWING No:- 1801/03/3012



ALL ADOPTABLE DRAINAGE WORKS TO BE CONSTRUCTED AS DETAILED IN "SEWERS FOR ADOPTION, 6TH EDITION"

- NOTES**
- THE SERVICE CROSSING DOES NOT PASS THROUGH ANY BANK, CULVERT, REMOTE DEFENCE OR RIVER CONTROL WORKS ON THE MAIN RIVER OR THROUGH ANY SEA DEFENCE.
 - THE SERVICE CROSSING IS 50m OR MORE UPSTREAM OF ANY IMPONDMENT OR ARTIFICIALLY RAISED CHANNEL.
 - PERMANENT HAZARD MARKERS TO BE ERECTED ON BOTH BANKS OF THE MAIN RIVER.
 - ALL EXCAVATED MATERIAL NOT RE-USED ON THE SITE OF THE WORK TO BE REMOVED FROM THE FLOOD PLAIN.
 - THE WORKS ARE NOT TO DISTURB THE BED AND BANKS OF THE MAIN RIVER.
 - THE MAIN RIVER REFERRED TO IS THE SALARY BROOK.

FOR TENDER PURPOSES ONLY

LATEST REVISIONS ARE 'TAGGED' WITH THIS INDICATOR. HOWEVER, ALL USERS OF THIS DRAWING MUST SATISFY THEMSELVES OF ALL REVISIONS TO ANY PREVIOUS ISSUES, BY COMPARISON OF THIS DRAWING AGAINST OTHER ISSUES, AS IT CANNOT BE GUARANTEED THAT EVERY ITEM OF REVISION HAS BEEN 'TAGGED'.

Rev	Date	Description	Drawn	Checked
G				
F				
E				
D				
C	04.11.20	NOTES ADDED	GIG	SCO
B	15.10.20	SCHEDULE UPDATED, PIPE BEDDING TYPE ADDED	JNE	SCO
A	23.09.20	DRAWING RE-SIZED TO A1, PLAN LAYOUT REVISED	JNE	SCO
Revisions				
Date	14.09.20	FIRST ISSUE	GIG	SCO

BROMLEY ROAD

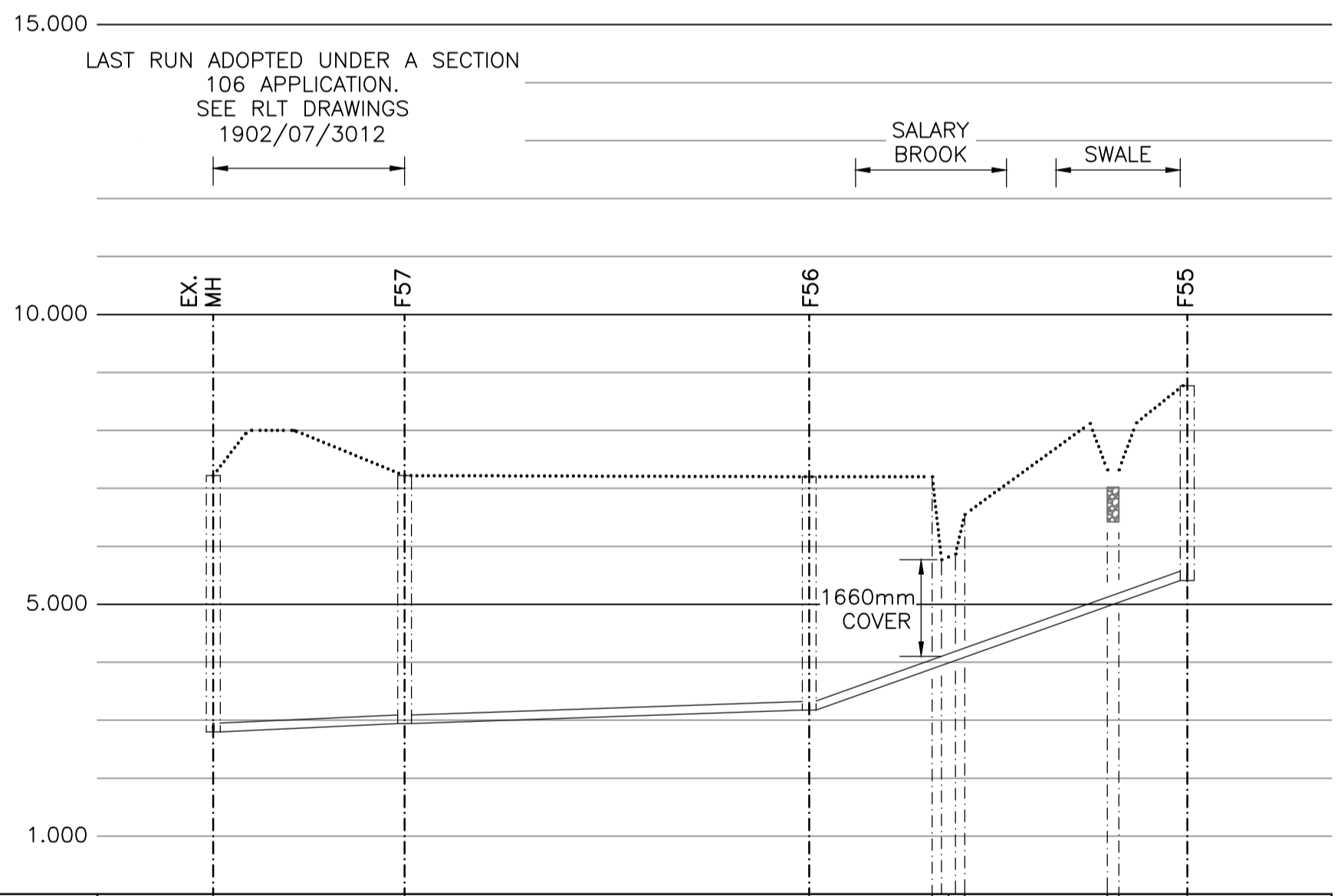
Title

SECTION 30 DETAILS

Client

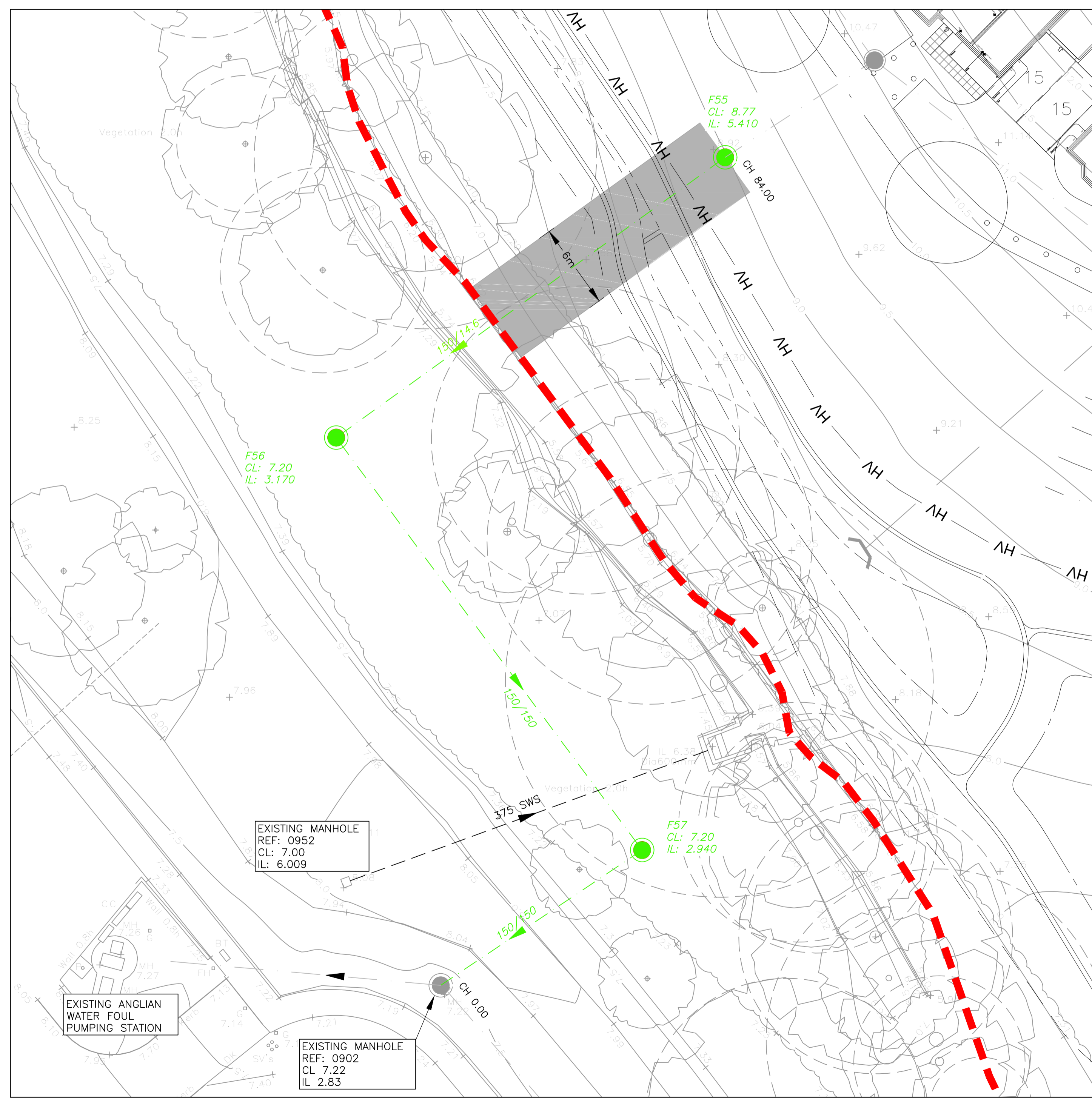
BELLWAY HOMES (ESSEX)

RLT ENGINEERING CONSULTANTS LTD
 CIVIL AND STRUCTURAL CONSULTING ENGINEERS
 2 ST PETER'S COURT
 MIDDLEBROUGH
 COLCHESTER, ESSEX, CO1 1WJ
 T: 01206 768655
 E: info@rlteng.co.uk



CHAINAGE	0.00	16.50	51.40	84.00
EXISTING GROUND LEVEL			5.770 5.818 5.866	7.200 6.550
FOULWATER COVER LEVEL	7.220	7.200	7.200	8.770
FOULWATER INVERT	2.830 2.830	2.940 2.940	3.170 3.170	5.410
FOULWATER DETAILS	Pipe F1.015 Dia 150 Circular CLAY 1 in 150 TYPE S BEDDING	Pipe F1.014 Dia 150 Circular CLAY 1 in 150 TYPE S BEDDING	Pipe F1.013 Dia 150 Circular CLAY 1 in 14.6 TYPE S BEDDING	
FOULWATER LENGTHS	16.50m	34.90m	32.60m	

F55 TO EXISTING MANHOLE
 LONGITUDINAL SECTION
 SCALE 1:500 HORIZ. ; 1:100 VERT.



INSET 'A'
 SCALE- 1:200