



CENTURION

YOUR NEWS FROM COLCHESTER BOROUGH COUNCIL

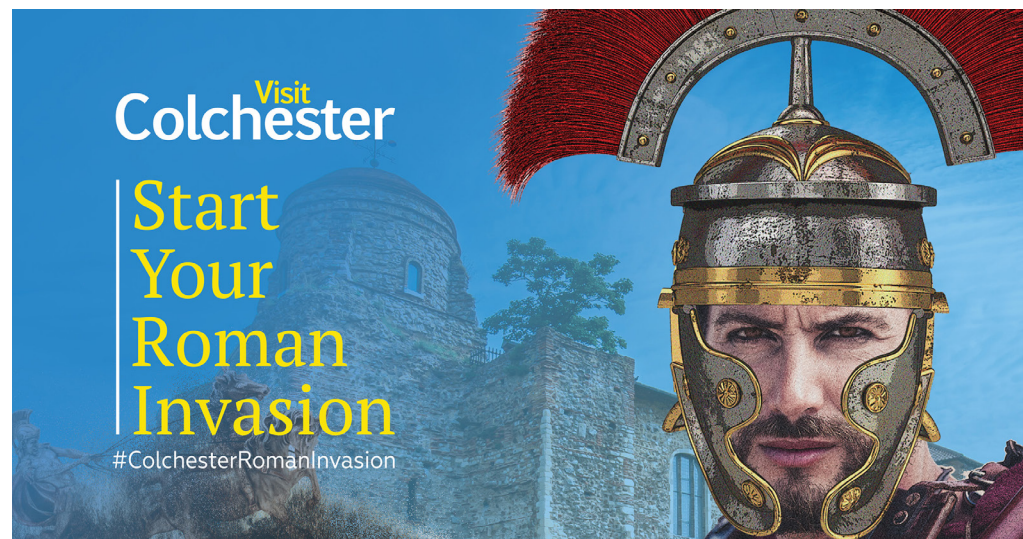
Romans to invade Liverpool Street!

Liverpool Street Station is to be invaded by Romans this month to promote Colchester as an exciting visitor destination.

In partnership with Greater Anglia, Visit Colchester is hosting a Roman themed event on Tuesday 19 March to encourage people to visit and discover the borough's rich heritage for themselves. Costumed

reenactors together with people from the Visitor Information Centre, Colchester Museums, local tourism partners and councillors will be on hand to give out themed goodies and information.

Follow the event on social media using #ColchesterRomanInvasion and at www.visitcolchester.com.



Businesses and council unite for Neat Street

Town centre shops, restaurants, bars and cafés will soon be joining with Colchester Borough Council in a new scheme to make the area even more attractive for visitors.

Neat Street is a new voluntary scheme where town centre businesses will show their pride in the town by taking responsibility for their shop fronts and encouraging their customers to dispose of litter responsibly.

The new scheme is supported by the Colchester Business Improvement District (BID).

This partnership of Colchester's business community aims to improve the street scene, landscaping, marketing and communications to help enhance the town centre.

The Neat Street initiative will build on the work of our zone and street cleansing teams to keep the area clean. It will also keep on top of litter which can build up in shop front areas.

Working in partnership with the BID, our town centre zone wardens and cleaning operatives will assist those businesses signed up to Neat Street to make the most of their premises.



This support could include helping to educate staff and customers on how to properly dispose of their rubbish and also to get rid of litter that builds up in shop and restaurant doorways.

BID manager, Sam Good, said: "It is well known that clean and well-maintained shop fronts not only help increase the attractiveness of an area and therefore the

number of visitors, but also help increase trade for shops, restaurants and other businesses.

"A clean town centre is a priority for the BID and we are determined to support those businesses who are keen to do their bit to ensure Colchester remains a tidy, welcoming and above all, thriving place to visit."

Making Colchester a great destination

With the country's high streets facing many challenges Colchester Borough councillors and residents have been called on to help look at ways of making Colchester an even more attractive destination.

A key focus is the High Street, with initial discussions about pedestrianisation and other opportunities for making our town centre an even better destination, started at our Policy and Public Initiatives Panel in January.

Before any such initiatives can be progressed a wider look at Colchester's transport and congestion issues will be required.

The Policy and Public Initiatives Panel will continue to engage the public and others to develop ideas that would enhance the attraction of Colchester's town centre to shoppers and visitors.

We will ensure every interested stakeholder will be able to play their part including town centre businesses, bus companies and fairer access groups.

Among the issues that need to be investigated are: improvements in air quality; access; boosting visitor numbers; potential for new town centre family-friendly activities; impact on high street business and deliveries; and traffic congestion around the town centre.

LOVE THE CASTLE?

cimuseums.org.uk/residentpass

#LoveColchesterCastle

Voucher can be used up to and including 19 April 2019

Get unlimited entry to Colchester Castle for a whole year with the Resident Pass!



10% OFF

Your first Resident Pass on presentation of voucher

@enjoycolchester

@yourcolchester

colchester.gov.uk

INSIDE THIS ISSUE...

Page 3 **Gum Litter Blows!** | Page 4 **Mercury Rising** | Page 5 **Green wall** | Page 6 **Who delivers your services**
Page 8 **Amphora success** | Page 10 **Colchester a top recycler!** | Page 12 **Delivering our priorities**

The publication is produced by Colchester Borough Council. To contact us please email communications@colchester.gov.uk.

Helping keep our budgets balanced

Colchester Borough Council has risen to the challenge of balancing its budgets in the face of reduced Government funding and rising demands on its services.

Each year it costs the council around £18 million to provide the services residents, businesses and visitors depend and rely on.

Traditionally much of this money has come from Government.

In 2009/2010 we received £10.7 million in core Government grant.

But by 2018/2019 this had reduced to £275,000 and next financial year we will not receive a core grant.

The Government does now allow us to keep a small share of the business rates we collect and we also receive a grant called New Homes Bonus (NHB), currently around £3m a year.

We use the NHB to help to run our core services, support key projects and help improve the quality of life across the

borough through schemes and initiatives being promoted through the 'Better Colchester' campaign.

Like councils across the country we have had to work hard to keep our finances in good order, to balance our budgets while providing services for those who live, work in or visit the borough.

This has required us to make savings, to review how we provide services to ensure they are as effective and efficient as possible and to invest the NHB in ways that generate more money to support services in the future.

Last year we also launched three new council-owned companies to help maximise our income generation (see page 8 for more information).

Not only does this help us provide more funding for our day-to-day services but it also allows us to invest in longer term capital projects, such as the Northern Gateway sport facilities.



Work of council services recognised in national awards



Services provided and managed by Colchester Borough Council have been recognised in national awards.

Our Revenues Team received a 'Highly Commended' in the District Authority Revenues Team of the Year category in the Institute of Revenues Rating and Valuation Performance Awards 2018.

The team was recognised for transforming collection services which saw it achieve its best results to date – collecting nearly 98% of council tax and over 99% of business rates while receiving a fantastic 98%

customer service satisfaction rating.

The Essex Macmillan Welfare Benefits Service – providing holistic welfare benefits advice for people affected by cancer in north, mid and south Essex – has also been shortlisted for Team of the Year at this year's prestigious Local Government Chronicle Awards.

In 2017/18 they supported 2,188 people affected by cancer and helped people to claim a total of £7.4 million in benefits they were entitled to. The winners will be announced in March.

Award winning council call centre

Colchester Borough Council's Contact and Support Centre has achieved a prestigious national standard for excellent customer service and has also received great feedback direct from the public.

The Customer Service Excellence Standard was achieved following a year-long programme and rigorous two day independent assessment.

The standard covers a range of areas including timeliness of responses, the quality of information provided and the motivation of its staff.

The service exceeded the requirements, gaining the 'Compliance Plus' standard, in a number of areas. These included leadership of the team, how customer insight was used to innovate and improve

the service, and how managers engaged with staff to implement improvements.

This followed a survey in which nine out of ten people said they had received a positive experience when contacting our Contact and Support Centre.

Last September, 424 people using the Centre left their feedback.

Overall, 91% said they were satisfied with the service they had received, which is up 5% from the previous survey carried out in June.

A further 88% said their call was responded to in a timely manner – a 2% rise.

And 97% of those responding felt advisors had been professional and polite, which was also an increase of 5%.



Gum Litter Blows! Recycle your gum litter on-the-go

Special chewing/bubble gum recycling bins have been placed in key hotspots in a bid to encourage people not to dump their gum on Colchester's paths.

Our Gum Litter Blows – So Bin It! campaign is designed to make it easy for people to dispose of their gum.

In 34 places around the town bright pink Gumdrops, which look like strawberry-flavoured bubble gum bubbles, have been installed for people to simply drop their gum in ready for recycling.

To make it even easier to recycle gum, people can also pick up a free 'Gumdrop on-the-go' keyring from five locations in the town – the Visitor Information Centre at Hollytrees Museum, Firstsite, Colchester

Town Hall, Leisure World and Colchester Library. Chewed gum can be deposited in the keyring and, once full, they can be dropped off at one of the five points and a new one collected.

Both the bins and keyrings are collected by Gumdrop Ltd when full with the gum recycled to make new bins and keyrings. Gumdrop Ltd is the first company in the world to process chewing gum into a range of new compounds for use in the rubber and plastics industry.

We have set aside £10,000 to deliver the gum drop project over a two-year period.

For more information about the campaign watch the video at colchester.gov.uk/bettercolchester.



More Police on our streets



The new partnership between Colchester Borough Council and Essex Police to crackdown on persistent anti-social and criminal behaviour in the town centre has started to bear fruit.

Last year we joined forces with the police to launch a Town Centre Action Plan (TCAP).

This is designed to tackle issues including street drinking, anti-social behaviour and aggressive begging in the town.

This has been further strengthened by the recruitment of the new Team Ten – dedicated to tackling issues in the town centre and helping provide more officers on our streets.

The team includes a Police Constable, four Police Community Support Officers (PCSOs), and four Special Constables.

Now the team has been completed with

the appointment of Colchester Borough Homes' new Anti-Social Behaviour Officer.

They work alongside our zones team and licensing officers to provide a highly visible presence able to tackle the concerns and issues often raised by residents, businesses and visitors.

Under the shared plan, partners meet weekly to share intelligence on individuals or groups involved in criminal activity or anti-social behaviour in the town.

The TCAP is designed to ensure our town centre remains an attractive and safe place to visit.

Where enforcement is not appropriate, partners collaborate with the wider partnership, including homelessness organisations and outreach workers, to seek alternative support.

The plan was launched last August, with

an investment of £300,000 from us, which was match funded by the police. It is part of our £2 million two year action plan to deliver a Better Colchester.

This partnership has provided dedicated patrols of up to 70 hours a week in the town centre.

This includes increased patrols by police and zone wardens in key hotspot areas, with acceptable behaviour orders, community protection warnings, community protection notices and fixed penalty notices issued to those carrying out anti-social behaviour.

Remember: if you're a victim of crime or see anyone committing crime or anti-social behaviour, call the police on 999 in an emergency.

In a non-emergency, call 101 or email ColchesterCPT@essex.pnn.police.uk.

Helping keep your visit safe

Colchester Borough Council's Licensing and Food and Safety teams help ensure visits to the borough's pubs, clubs, cafés and restaurants are as safe and enjoyable as possible.

The Food Safety Team run training courses for the borough's food businesses to ensure they comply with food safety laws.

They also inspect all food businesses, awarding ratings of zero (urgent improvement is required) to five (hygiene standards are very good).

People can check these ratings before deciding where to eat at ratings.food.gov.uk.

We are responsible for licensing a wide range of activities including hackney carriages and taxis, the supply of alcohol, and gambling.

The Licensing Team carries out the inspections and enforcement of these licenses.

This is to ensure their licenses are being complied with, as well as health and safety regulations in places like shops and offices. If necessary they take legal action against those breaking the regulations.

In 2018, four organisations were successfully prosecuted for health and safety breaches resulting in fines totalling more than £250,000.

GET THE BEST PEST CONTROL

Reactive, preventative and monitoring services for:

Rats/Mice • Fleas • Cockroaches • Ants • Wasps • Bedbugs



Over 20 years of experience and after the final treatment all work is guaranteed for a month*
For advice and to book your appointment visit colchester.gov.uk/pests

*Terms and conditions apply



New look Mercury Theatre set to rise



Artist's impression

Work to completely refurbish the Mercury Theatre and create a hub for local performing arts is well underway.

Under the Mercury Rising project the much loved theatre at Balkerne Gate is undergoing a £9 million redevelopment due to be completed and ready to fully reopen by the summer of 2020.

It will see the creation of three new rehearsal and studio spaces including one dedicated to arts education and

community participation, and another on dance. There will also be new flexible spaces for community hire, an updated box office, all day café and bar area.

A large amount of the refurbishment work is to make the building modern and accessible with two new lifts servicing the main auditorium, accessible signage and additional toilet facilities across the building.

Demolition work started last October, and the project to refurbish the 46-year-old theatre building will run throughout this year and early next year.

The theatre will remain open to the public until the end of May, when it will take a special programme of shows to an exciting temporary venue being created exclusively for the Mercury at Abbey Field.

The project is being supported with £1.2 million of European Regional

Development Fund money, £1 million from Colchester Borough Council and donations from the public and a range of other organisations including Essex County Council and the South East Local Enterprise Partnership.

It is one of only five capital projects of its size in the UK to be supported by Arts Council England, highlighting Colchester's importance as a creative hub. The Mercury Theatre currently helps bring around £3.6 million into the local economy and supports around 100 local jobs.

The theatre's Executive Director, Steve Mannix, said: "Our aim is a community-focused building allowing people to fully engage with theatre and performing arts.

"We are already at the centre of the region's creative industries, but there is so much more we can do which this ambitious project will help us achieve.

"There will be new facilities for people to use, exciting opportunities for everyone and all while we continue to produce award-winning theatre for the local and national audience."

Anyone wanting to support the project can donate by visiting www.mercurytheatre.co.uk/support or joining its text to give campaign by texting RISE20 £3 to 70070 (standard network charges will apply).

Highlighting our heritage

Projects to help shine a light on some of Colchester's historic landmarks are being driven forward by Colchester Borough Council.

Working with partners, we are developing a strategy to vastly improve the lighting of key heritage sites in the town – starting with Colchester Castle and a stretch of the Roman wall at Balkerne Gate.

Under the scheme, new lighting will be installed to illuminate roughly 260 metres of Roman wall at Balkerne Gate at night, while the Castle is set to benefit from new external lighting.

Work at the Castle will include replacing and upgrading the venue's external

uplighters and new LED lighting will be installed below the footbridge.

Professional light shows will be used for special occasions like poppies being projected on to the Castle around Remembrance Sunday.

For all this to happen we need to work with specialist agencies to obtain scheduled monument consent. We are confident that all of the work to support this initiative will be completed by the end of the summer.

We are also looking to install a temporary colourful light installation at Sir Isaac's Walk where partially illuminated umbrellas will provide visitors and businesses a beautiful view.



Discover the Beautiful Borough



Residents and visitors are being urged to explore the sights and attractions making up our Beautiful Borough, this spring.

Colchester Borough Council's tourism service, Visit Colchester, is running a campaign highlighting the borough, from its coast to countryside.

The borough comprises of 135 square miles of diverse countryside, town and villages with unique identities. There is much for residents to enjoy, as well as for visitors planning an extended break.

The campaign highlights a number of areas across the borough - Colchester

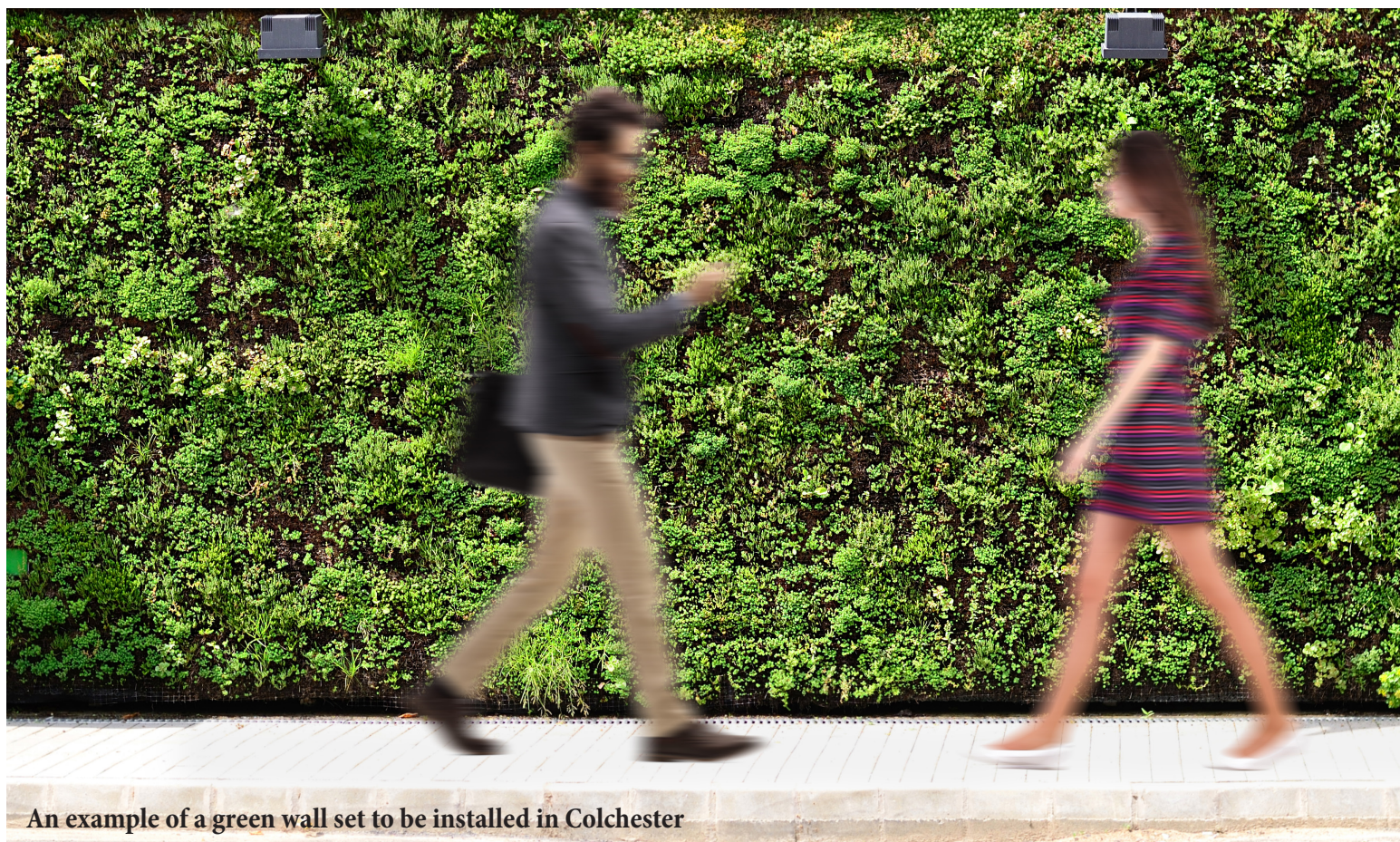
town centre, Dedham, Mersea, Roman River, Chappel, Tiptree and Wivenhoe.

People can find out more about the Beautiful Borough campaign by visiting visitcolchester.com/BeautifulBorough where you can download your favourite image as a wallpaper for your phone, PC or tablet.

There is also a special section on the campaign in the 2019 Visitors Guide and pocket sized leaflet including a free map.

These are available from the Visitor Information Centre based in Hollytrees Museum, in Castle Park.

A green wall for Colchester



An example of a green wall set to be installed in Colchester

The potential for creating a new green wall in the borough is being looked at by Colchester Borough Council.

A green wall, also known as a living wall, is a wall partially or completely covered with small plants, which includes an integrated watering and irrigation system and soil or another medium that helps the plants to grow.

It works by having a lightweight frame

attached to a building or structure which has cassettes with pockets to hold the plants, with a separate membrane which holds water.

There are examples of green walls in towns and cities across the world.

These help to enhance the look and feel of an area as well as providing a range of other benefits including insulating buildings, soaking up rain and absorbing pollutants.

We have been working to identify suitable sites for the green wall as well as appointing a contractor to turn the vision into reality.

It is hoped the installation of the wall will start during this year.

The green wall will help improve the aesthetics of Colchester, making it an even more appealing and welcoming place – a core part of our Better Colchester campaign.

Love Colchester Castle



Colchester residents are being reminded they can benefit from a fantastic money saving offer allowing them to visit the historic Colchester Castle as many times as they like each year.

Launched last year, the Resident Pass allows people living in the borough the chance to enjoy one of the most important heritage sites and most popular visitor attractions in the East of England for a discounted annual fee.

The Castle is the largest Norman Keep in Europe, and residents can visit as often as they want during the year for just £10.00 for adults, £6.75 for children and concessions and £5.25 for students.

People can also save an additional 10% on their first pass with the voucher in this edition of Centurion.

As well as free entry to the Castle for a year, pass holders will also be able to enjoy existing and new exhibitions as well as exclusive member only events.

For more information visit cimuseums.org.uk/residentpass.

Refill revolution in Colchester

Visitors to Colchester town centre will soon benefit from three new drinking water dispensers which are set to be introduced by Colchester Borough Council this summer.

The aim is to have the new fountains at key locations around the town and in place by June.

The initiative will not only help keep residents and visitors healthy and hydrated but it also supports our Colchester Plastic Pledge.

The pledge encourages the ditching of single-use plastic drinks bottles to use reusable bottles instead.

It also supports the aims of the Livewell Colchester campaign, designed to support residents with health and wellbeing throughout life.

One of the new drinking water dispensers will be installed by the toilet area in Lower Castle Park, with a second being put in outside Angel's Yard in the High Street.

In addition to these new drinking water dispensers, the ageing water fountain at Hollytrees Museum in Castle Park will be replaced with a brand new one.

As well as supporting our Colchester Plastic Pledge the water dispenser campaign also supports the growing refill revolution.

Last year, the national Refill campaign was launched in Colchester.

This initiative encourages us all to use reusable water bottles and refill these for free at participating locations in the town including Leisure World Colchester and the Town Hall.

More information on the campaign and the list of local Refill stations can be found at refill.org.uk.

Staying hydrated is important to people's overall health and fitness, helping people feel energized and more able to concentrate.

Dehydration means your body loses more fluids than you take in.

If it isn't treated, it can get worse and become a serious problem.

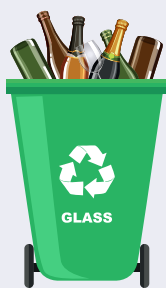
The installation of the new drinking water dispensers forms part of our ambitious two-year £2 million action plan to create a Better Colchester by making the borough an even better place to live, work in and visit.



Who provides your council services in Colchester?

Colchester residents benefit from and can access a wide range of council services across the borough. These services will either be delivered by Colchester Borough Council or Essex County Council.

This is because in Colchester, like most other parts of Essex, the local borough or district council run services purely focused in their local area, while the county council provides services spanning the whole county. This is what is known as two-tier local government. Below is a guide to who provides what key services across the borough.



Recycling and Rubbish Collections



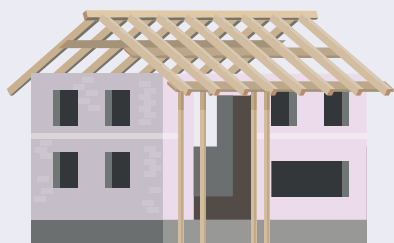
Housing



Education and Schools



Highways
(Improvements, Maintenance & Gritting)



Planning and Building Control



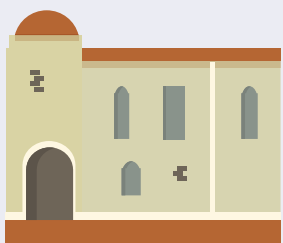
Environmental and Animal Services
Incl. Zones, Food Hygiene, Licensing



Social Care



Children and Young People Service



Museums and Heritage



Housing Benefit and Local Council Tax



Libraries



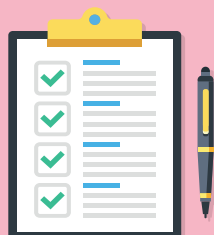
Waste Disposal and Recycling Sites



Parking



Leisure Services



Trading Standards



Births, Ceremonies and Deaths

Meet your councillors



Cllr Christopher Arnold
Rural North
Conservatives



Cllr Lewis Barber
Lexden and Braiswick
Conservatives



Cllr Nick Barlow
Castle
Liberal Democrats
PFH – Commercial
Services



Cllr Lyn Barton
Shrub End
Liberal Democrats



Cllr Kevin Bentley
Marks Tey and Layer
Conservatives



Cllr Tina Bourne
Greenstead
Labour
PFH – Housing &
Communities



Cllr Roger Buston
Prettygate
Conservatives



Cllr Nigel Chapman
Rural North
Conservatives



Cllr Peter Chillingworth
Rural North
Conservatives



Cllr Helen Chuah
St Anne's and St John's
Liberal Democrats



Cllr Phil Coleman
Mile End
Liberal Democrats



Cllr Nick Cope
New Town and Christ
Church
Liberal Democrats



Cllr Mark Cory
Wivenhoe
Liberal Democrats
Leader of the Council
PFH – Strategy



Cllr Simon Crow
Castle
Conservatives



Cllr Robert Davidson
Mersea and Pyefleet
Conservatives



Cllr Beverly Davies
Prettygate
Conservatives



Cllr Paul Dundas
Stanway
Conservatives



Cllr John Elliott
Tiptree
Conservatives



Cllr Andrew Ellis
Marks Tey and Layer
Conservatives



Cllr Vic Flores
Shrub End
Conservatives



Cllr Adam Fox
Old Heath and The Hythe
Labour



Cllr Martin Goss
Mile End
Liberal Democrats
PFH – Waste, Environment
& Transportation



Cllr Dave Harris
Berechurch
Labour



Cllr Chris Hayter
St Anne's and St John's
Conservative



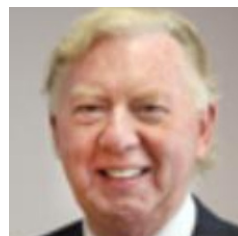
Cllr Pauline Hazell
Shrub End
Conservative



Cllr Theresa Higgins
New Town and Christ
Church
Liberal Democrats



Cllr Mike Hogg
St Anne's and St John's
Liberal Democrats



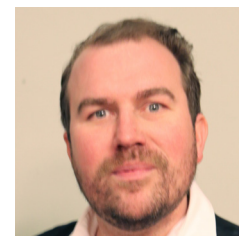
Cllr Brian Jarvis
Lexden and Braiswick
Conservatives



Cllr John Jowers
Mersea and Pyefleet
Conservatives



Cllr David King
Mile End
Liberal Democrats
PFH – Resources



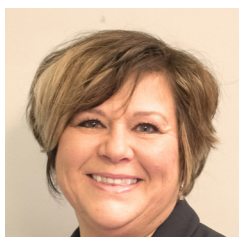
Cllr Darius Laws
Castle
Conservatives



Cllr Cyril Liddy
Wivenhoe
Labour



Cllr Michael Lilley
Old Heath and The Hythe
Labour
PFH – Planning, Public
Safety & Licensing



Cllr Sue Lissimore
Prettygate
Conservative



Cllr Derek Loveland
Tiptree
Conservative



**Cllr Andrea
Luxford Vaughan**
Wivenhoe
Liberal Democrats



Cllr Fiona Maclean
Stanway
Conservatives



Cllr Jackie Maclean
Marks Tey and Layer
Conservatives



Cllr Patricia Moore
Mersea and Pyefleet
Conservatives



Cllr Beverley Oxford
Highwoods
Independent
PFH – Customers



Cllr Gerard Oxford
Highwoods
Independent



Cllr Philip Oxford
Highwoods
Independent



Cllr Chris Pearson
Berechurch
Labour



Cllr Lee Scordis
Old Heath and The Hythe
Labour



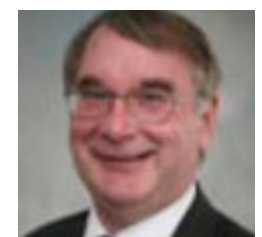
Cllr Lesley Scott-Boutell
Stanway
Liberal Democrats



Cllr Martyn Warnes
Berechurch
Labour



Cllr Lorcan Whitehead
New Town and Christ
Church
Labour



Cllr Dennis Willetts
Lexden and Braiswick
Conservatives



Cllr Barbara Wood
Tiptree
Conservatives



Cllr Julie Young
Greenstead
Labour



Cllr Tim Young
Greenstead
Labour
Dep. Leader of the Council
PFH – Business & Culture

PFH - Represents Portfolio Holder

If you wish to contact your local councillor, please contact them using the following format:
(first name).(surname)@colchester.gov.uk

For more information regarding your local councillor, please visit colchester.gov.uk/councillors.



Green shoots for Northern Gateway

Work to create a brand new sports and leisure hub for the East of England as part of the Northern Gateway development is well underway with new rugby pitches already seeded!

This flagship scheme will create the new hub, homes and job opportunities on a 150 acre site situated either side of the A12 adjacent to junction 28. The creation of the sports hub is the initial phase of the new development on 76 acres on the north of the site.

In December, Chelmsford-based R G Carter – who have delivered similar developments across the UK – were awarded the contract for constructing the main sports park with work due to begin this spring.

The sports centre design includes a gym,

studio space, sports hall which will be used as a regional centre for cricket and badminton, and an on-site café.

In addition, a new and high specification clubhouse will be created for Colchester Rugby Club, with floodlit 3G and natural grass pitches, allowing ample space and facilities for the club's well attended senior rugby matches and equally popular youth and mini rugby.

There will also be a 1.6km road cycling track providing residents and visitors of all ages and abilities the chance to participate in cycling from social to organised activities.

The entire Northern Gateway project is being managed by Colchester Amphora Trading Ltd, one of the council's wholly owned companies.

**Help when
you need it,
at the touch
of a button**

**24/7 emergency home
response & lifting service**



**12 WEEK
FREE TRIAL**

Helpline
There when you need us

**Contact us for
more information:**

**01206 769779
helplineplus.co.uk**



Colchester
AMPHORA TRADING

Council companies celebrate success

The three commercially focused companies set up by Colchester Borough Council are celebrating a successful first year in operation.

We set up the companies, under the parent company of Colchester Commercial Holdings Ltd (CCHL), last April to help us maximise income - generating opportunities in the face of ongoing cuts to our central Government funding and to support services residents depend and rely on.

The three subsidiary companies under CCHL - Colchester Amphora Trading Ltd (CATL), Colchester Amphora Homes Ltd (CAHL), and Colchester Amphora Energy Ltd (CAEL) - have all made significant progress in a number of key projects.

One of these key projects has been the flagship 150 acre Northern Gateway development, being managed by CATL.

This project will create a new sports and

leisure hub to the north of the A12 and new homes and job opportunities on the scheme to the south.

Alongside the planning and design work, CATL is also working with a number of potential funding organisations on bids to bring additional funding in to support and further enhance the scheme.

Colchester Events Company also falls under CATL and it has continued to bring some household comedy names and big music names to the borough. Over the past year Simple Minds and Steps have performed at Castle Park, with Craig David scheduled to take to the stage there in June.

Live comedy talents lined up to perform at Charter Hall include Jason Manford, Ben Elton and Jimmy Carr.

Exciting plans for 350 new homes at four locations across the borough are being progressed by CAHL. Doing this through

a council-owned company means we can guarantee that 30% of homes will be affordable for rent on every development.

That means 90 households will be housed from the council's housing needs register in quality homes.

Architects have been appointed for the four sites which are in Creffield Road, Military Road, Mill Road and on the St Runwald Street car park behind the Town Hall.

The innovative sustainable energy company, CAEL has made significant progress towards developing a ground source heat network in north Colchester. This project will operate alongside the Northern Gateway development to supply low carbon heat to the homes and businesses on the site situated either side of the A12 adjacent to junction 28.

For more information on the companies visit colchesteramphora.com.

Amphora Place Phase 2 nears completion

Work on the second phase of the 10,000 square foot Amphora Place office development is nearing its completion.

The offices in Sheepen Road have already been pre-let to insurance brokers Aston Lark who are scheduled to move into the

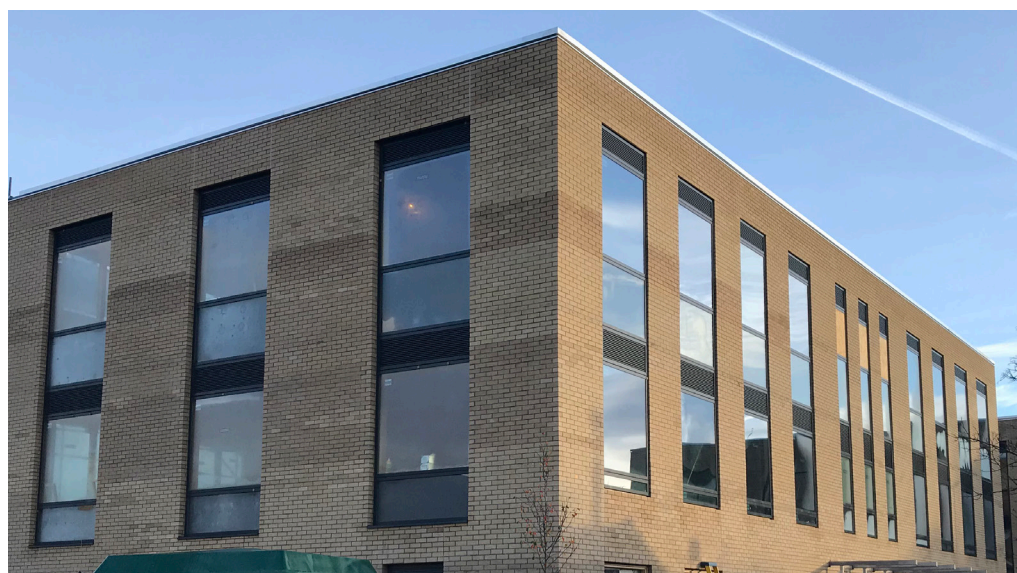
building shortly on a ten year lease.

Once the development has been finished it will provide 929 square metres of Grade A office space which has set a record rent for the town.

The first phase of Amphora Place was let to Birkett Long Solicitors who took occupation of the 17,500 sq ft (1,625 sq m) building in June 2017.

The three-storey building is named after the remains of several Roman wine vessels that were found on the site in the early stages of the build.

The construction of Phase 2 is being project managed by Colchester Amphora Trading Limited, one of Colchester Borough Council's wholly owned commercial companies.





colchester.gov.uk/bettercolchester

Prestigious award for Castle Park

Castle Park has been internationally recognised with Colchester Borough Council's grounds maintenance contractor, idverde, scooping the top award at Europe's largest landscaping awards.

They were named Principal Award Winner 2018 at the British Association of Landscape Industries (BALI) National Awards in recognition of the high-quality workmanship in Castle Park.

The outstanding planting and maintenance of Castle Park, achieved in partnership with our Park Ranger team and supported by the Friends of Castle Park Volunteers, marks it out as a jewel in the crown of Colchester's parks and open spaces.

After visiting the park the judges commented: "We thought the park was extremely well presented, illustrating a great partnership between client and contractor – exactly what we look for in a category such as this... a wonderful place to visit."

The park is renowned for its seasonal flower displays, with visitors flocking to it last year to admire a floral replica of a World War One tank, designed and planted to commemorate the centenary of the end of the conflict.



Get building regulation advice from our expert team

Residents or businesses considering extending, altering or renovating their home or premises can get expert advice from Colchester Borough Council's award winning Building Control team to ensure any work meets the necessary standards and regulations.

Building Regulations are designed to ensure the health and safety of people in or around buildings.

They also include requirements to ensure that fuel and power is conserved and that facilities are provided for people, including those with disabilities, to access and move around inside buildings.

Anyone planning to extend and/or make alterations to their home or business will need to submit a Building Regulation application to ensure the proposed works meet current regulations.

Our Building Control team offers a friendly and professional service, experienced with dealing with domestic and commercial projects of all sizes.

They will also provide advice at the early stages of and throughout a project to ensure your proposals comply with the regulations.

To find out more about how the team can assist you visit colchester.gov.uk/buildingcontrol or email building.control@colchester.gov.uk.

Colchester in the top three in England!

The borough's recycling rates are among the very best in the country according to official Government figures.

Colchester Borough Council was named the local authority with the third largest increase in household recycling in 2017/18 by the Department for Environment, Food and Rural Affairs (DEFRA).

We achieved a recycling rate of 55% - a 9% increase from the previous year and 10% above the overall recycling rate for England.

The same report also ranked us as the best in the Eastern region and second in England for reducing the amount of rubbish generated per person.

This is a huge achievement and underlines why in 2017 we changed the way we collect rubbish and recycling to help boost recycling rates and reduce the amount of rubbish sent to landfill.

Since then, our recycling rates have gone from strength to strength.

We are always looking at encouraging people to recycle even more of their waste including beginning to introduce plastic recycling facilities to over 7,000 flats last year.

This month residents will receive their recycling calendars detailing when their waste and recycling collections will be taking place between April 2019 and March 2020.

These will be delivered with the annual council tax bills.

The calendar will also include information on what can be put out in each collection and any limits that may apply.

Residents can also check and download their calendar from our website at colchester.gov.uk/recycling.

There are a range of local recycling facilities



across the borough where residents can recycle items that are not accepted as part of the kerbside recycling.

These include:

- * Small electrical items – these can be recycled at selected retailers and at recycling centres.

- * Between April and September we offer a Saturday Household Items Drop-Off Service in various locations across the borough for small, broken or unwanted household items that aren't picked up as part of your usual kerbside collection. Details can be found on our website.

- * Used batteries can be taken to a recycling centre or a collection point in a supermarket, a DIY centre or even some local shops.

- * Energy efficient light bulbs can be

recycled at local recycling centres.

- * Baking trays can be placed in the 'Metal' containers at recycling centres.

The continued efforts of our residents to increase the amount of their rubbish that they seek to recycle has helped us to achieve our fantastic recycling rates.

We are committed to continue increasing our recycling figures.

Information on how and where you can recycle or dispose of a whole range of household items can be found at recyclenow.com.

Information on what can be recycled through our collections, as well as the locations and opening times of local recycling banks and centres, can be found on our website at colchester.gov.uk/recycling.

Electric vehicle charging point



Colchester Borough Council is set to install its first electric vehicle charging point at Priory Street car park later this year.

The installation of the charging point is part of our drive to improve the air quality in and around the borough.

It is also aimed at providing people with more confidence in switching to more environmentally friendly electric vehicles by adding to the growing network of charging points across Essex.

Priory Street car park is open 24 hours a day.

This means that once installed the charging point will be readily available for residents, shoppers and visitors to the town to charge their electric vehicle.

There are already several other charging points for electric vehicles across the borough.

These include Asda, Waitrose, University of Essex and Tollgate Retail Park and we are currently looking at other suitable town centre sites.

Make your Plastic Pledge

More and more residents and businesses across the borough are signing up to Colchester Borough Council's pledge to phase out single-use plastics.

Last year we launched the Colchester Plastic Pledge as part of our drive to help protect the environment by reducing waste – particularly plastic waste.

More than 120 residents have submitted a pledge, with eight being presented with reusable bottles and bags for their pledges. The two most popular pledges are to use reusable bottles and stop using plastic straws.

However, residents have also created their own pledges to change their buying habits

by cutting out or reducing buying products that use single-use plastic.

Several local organisations such as Wivenhoe House Hotel, Harpers Cafe and Signpost Colchester have also made pledges and we are committed to encouraging other local organisations to be plastic aware.

The campaign, which forms part of our work to deliver a Better Colchester, has also received support from Sir David Attenborough, whose programme Blue Planet 2 highlighted the dangers of plastics being dumped in our oceans.

To make your pledge to reduce your use of plastics visit colchester.gov.uk/colplasticpledge.

HOMESTEP



We pay cash incentives to let your property

cbhomes.org.uk/homestep



Whatever your plans, Colchester has something great on offer...

Leisure World

EARLY BIRD OFFER: EASTER HOLIDAY CAMPS

Book Kids Camp or Base Camp on or before 17 March 2019 to pay just £22 9am-3pm (normally from £27) or £27 8am-5.30pm (normally £32). Book online at colchesterleisureworld.co.uk/holidayfun

LEISURE WORLD COLCHESTER

MOTHER'S DAY SPA PACKAGES

Mother's Day Spa Package (for two) includes Day Spa entry and Afternoon Tea for two for £45 or Mother's Day Spa and Body Treatment (for one) includes Body Wrap Treatment and Day Spa entry for £53. T&Cs apply. aqua-springs.co.uk

AQUA SPRINGS SPA

BOOK YOUR FREE VIP DAY

Try us for free and experience the best gym membership in town. Terms and conditions apply. Visit colchesterleisureworld.co.uk for details and special offers.

LEISURE WORLD COLCHESTER

Colchester Museums

KNIGHTZZZ AT THE MUSEUM (FAMILY SLEEPOVER)

5 APRIL

COLCHESTER CASTLE

Are you brave enough to spend the night? For families looking for a very special camping experience, join the museum team for a very different B&B! 7.30pm Sat - 8am Sunday. Tickets costs £30pp, or £25pp for groups of four or more. Booking essential.

EASTER HOLIDAYS

6 APRIL - 21 APRIL

COLCHESTER CASTLE

Join us at the Castle over the Easter holidays for lots of family fun! Discover more about mythical beasts by following our trail and design your own creature in our craft area. Take part in the Dragon egg hunt and help us decorate the Castle Dragon mural.

EASTER CRAFTS

16 - 18 APRIL

HOLLYTREES MUSEUM

Get crafty this Easter and make a seasonal wreath, chick or sun-catcher to take home. 16 April - Easter wreath | 17 April - Pom pom chick | 18 April - Easter sun-catcher. Sessions at 10.30am, 11.30am and 12.30pm. £5 per person, booking required.

For full listings of all events go to www.cimuseums.org.uk/activities



aqua springs

Mother's Day Spa Packages

Mother's Day Spa Package (for two)
Afternoon Tea for two, Day Spa Entry for two **£45**

Mother's Day Spa & Body Treatment (for one)
Body Wrap Treatment, Day Spa Entry **£53**

aqua-springs.co.uk
Terms and conditions apply

A LOOK AT SOME OF COLCHESTER'S UPCOMING EVENTS



EVENTS

Wedding Fair

Colchester Town Hall
Sun 17 March 2019 | 11am - 3pm

FREE ENTRY with Eventbrite e-ticket
bit.ly/townhallweddingfair

Colchester AMPHORA TRADING



UB40

40TH ANNIVERSARY TOUR

TUESDAY 14TH MAY 2019
COLCHESTER CHARTER HALL

UB40OFFICIAL SEETICKETS.COM 0871 220 0260 UB40OFFICIAL



CRAIG DAVID

PLUS GUESTS Sigala. LIVE BECKY HILL NATHAN DAWE

2 June
CASTLE PARK COLCHESTER

Presented by lbc.co.uk in association with fm.co.uk and bbc.co.uk



tom jones

Sunday 21 July 2019
COLCHESTER CASTLE PARK

CASTLE PARK | COLCHESTER CASTLE | CHARTER HALL | TOWN HALL MARCH - JULY 2019

17 March	Wedding Fair	TOWN HALL	14 May	UB40 - 40th Anniversary Tour	CHARTER HALL
30 March	Show Me Love	CHARTER HALL	2 June	Craig David	CASTLE PARK
5 April	The Legend Of Springsteen	CHARTER HALL	8 June	Dreamboys	CHARTER HALL
26 April	Comedy Store	CHARTER HALL	22 June	Here Come The Girls	CHARTER HALL
10 May	The Guilty Feminist	CHARTER HALL	21 July	Tom Jones	CASTLE PARK



Castle Park - Castle Park, High Street, Colchester, CO1 1UG
Colchester Castle - Castle Park, High Street, Colchester, CO1 1TJ
Charter Hall - Leisure World Colchester, Cowdray Avenue, Colchester, CO1 1YH
Town Hall - High Street, Colchester, CO1 1PJ

[f](https://www.facebook.com/colchestereventscompany) [i](https://www.instagram.com/colchestereventscompany) @colchestereventscompany

For full event listings and tickets, visit:
colchester-events.co.uk

Delivering on our priorities for Colchester

Colchester Borough Council is delivering on its ambitious action plan to make the borough an even more attractive place to live, work in and visit.

Last July we launched a dynamic two-year plan, underpinned by the Better Colchester campaign.

This reflected the concerns and suggestions put forward by residents, businesses and visitors.

We set aside £2 million to make the town centre cleaner, boost the promotion of our heritage, make our town an even safer place, and work with Essex County Council to improve the borough's infrastructure.

Together with the police, we have launched a Town Centre Action Plan to tackle issues in the town centre, including street drinking, anti-social behaviour and aggressive begging.

We have put an additional £100,000 – matched by Essex County Council – into the borough's Local Highways Panel to help make our roads safer and to encourage cycling.

An extensive two week deep clean of the

LET'S MAKE A
BETTER COLCHESTER



#bettercolchester

colchester.gov.uk/bettercolchester



High Street was carried out last summer, and extra staffing has been brought in to tackle issues such as litter and graffiti to keep Colchester looking attractive.

This edition of the Centurion highlights a wide range of initiatives designed to help further promote the borough's heritage including seeking to light up a number of our historic landmarks.

The success of the new Castle Residents Pass shows we are taking greater pride in our heritage.

In its first six months nearly 2,500 passes,

enabling people to visit Colchester Castle as many times as they like during a year for the cost of just one entry, were purchased.

As part of our drive to help tackle and prevent homelessness, we are helping deliver new affordable homes in the borough.

Over the next three years we will be delivering even more council housing.

Our Startwell Colchester Programme, which supports families and young people get the best start in life, is also helping to enhance the quality of people's lives.

Most participants say their home and money situation have improved while around 75 percent also said their mental health, education and learning had also improved.

Part of our ambitious plan was to listen and work with others.

We have set up a cross party Heritage task and finish group, as well as a Policy and Public Initiatives panel at which residents have been able to put forward common sense ideas and suggestions to help us build a Better Colchester.

**YOUR VOTE
MATTERS,
DON'T LOSE IT**

It's quick and easy to register.

You just need your name, address, date of birth and National Insurance number. Simple.

You can easily update the Register, if your details change.

Register to vote today.

colchester.gov.uk/register tovot e

YOUR VOTE MATTERS

DON'T LOSE IT



Make sure your voice counts

Residents across the borough will be going to the polls on Thursday 2 May to vote in the local borough election.

In total, 17 Colchester Borough Council councillors will be up for election – one in each of the wards making up the borough.

Polling cards are set to be delivered to homes across the borough from Friday 22 March.

If you receive your poll cards with your correct details, you are already registered to vote.

The last day people will be able to register to vote in these elections is Friday 12 April.

Anyone wanting a postal vote will have until 5pm on Monday 15 April to apply.

Those seeking to have a proxy vote must apply by 5pm on Wednesday 24 April.

More details about voting and elections can be found at colchester.gov.uk/elections.

On election day, around 100 polling stations will be open between 7am and 10pm, with the votes cast being counted and results announced that night.

Any contested parish council elections will also take place on the same day.

These votes would be counted and the results announced on Friday 3 May.

Make life simple with Direct Debit payments and online services

This month, residents across the borough will be receiving their annual council tax bills and benefits statements from Colchester Borough Council.

Those looking for a simple and safe way to pay their council tax can switch to Direct Debit payments.

This will ensure payments are made automatically meaning bills are never forgotten.

As well as helping to spread the cost of the bill across the year, no changes can be made to your payment without you knowing.

To help take the hassle out of paying, you can sign up for direct debits on our website at colchester.gov.uk/paycounciltax.

We have also recently launched a new e-billing and online document system providing a quick and simple way for people to review their council tax account or benefit documents.

Once set up, you can access past, current or upcoming council tax bills or benefit documents at the click of a button at any time. For more information visit colchester.gov.uk/paperless.

