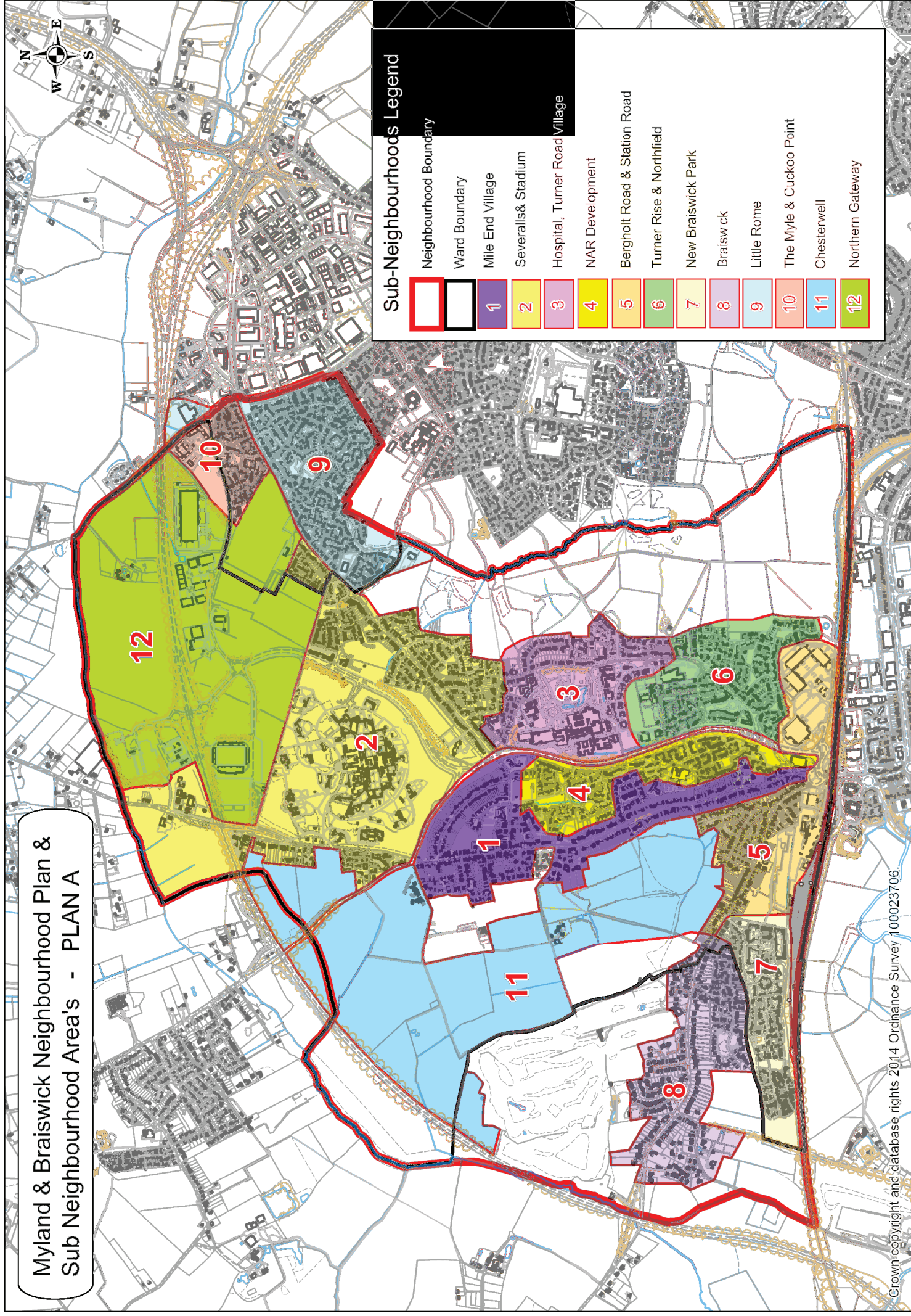


APPENDIX A

Myland & Braiswick Neighbourhood Plan and Sub-Neighbourhoods Area map

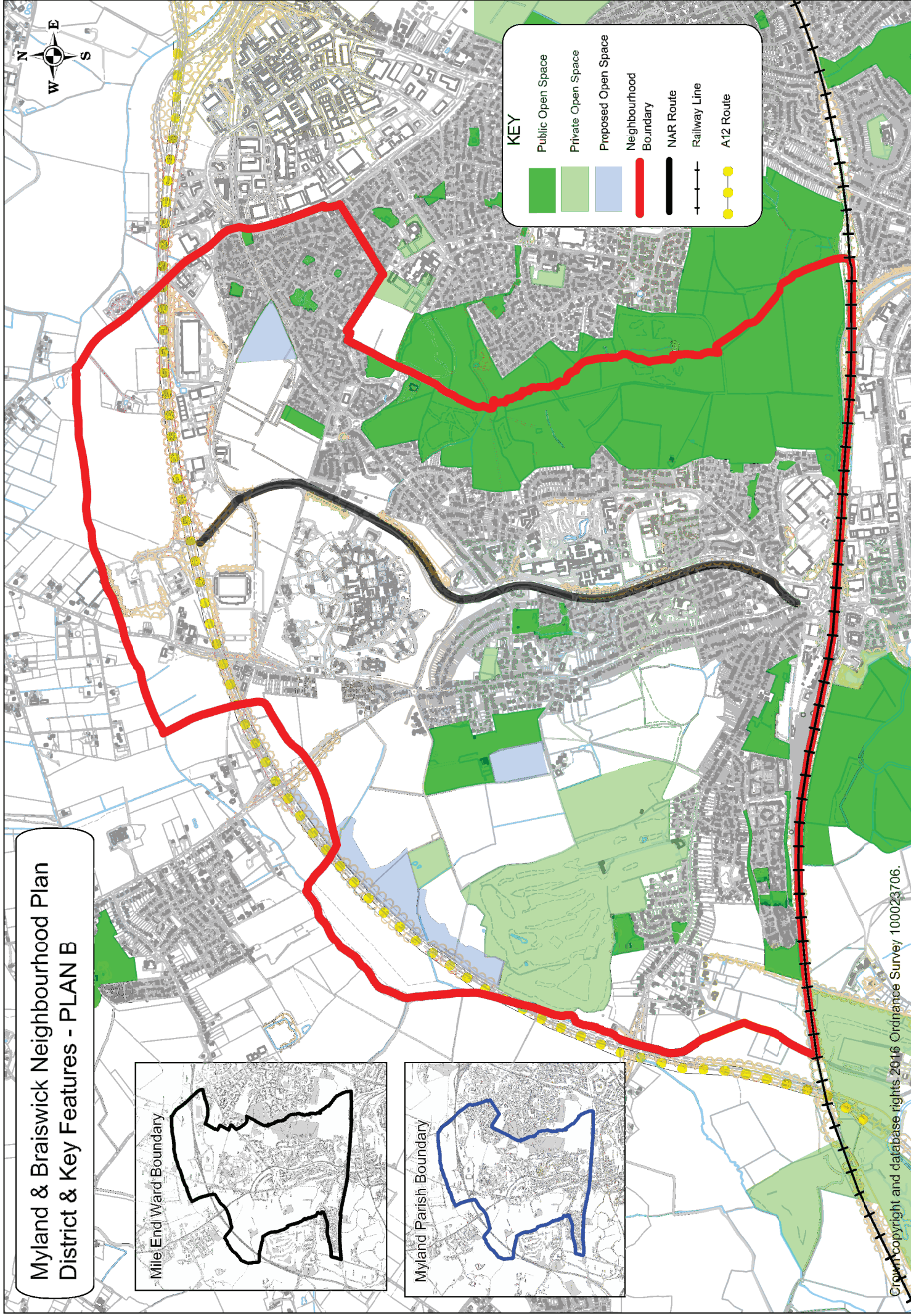
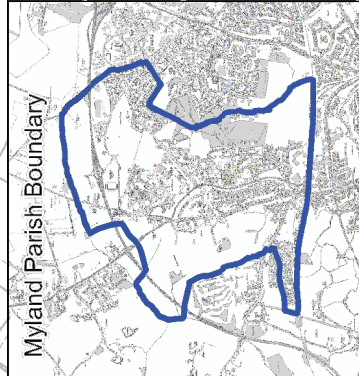
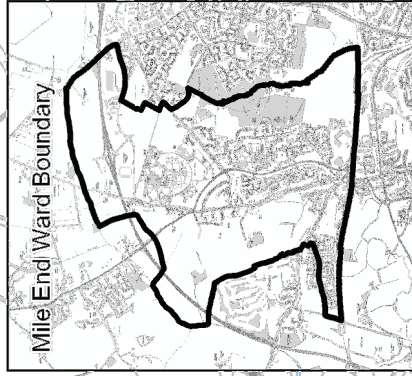
Myland & Braiswick Neighbourhood Plan & Sub Neighbourhood Area's - PLAN A



APPENDIX B

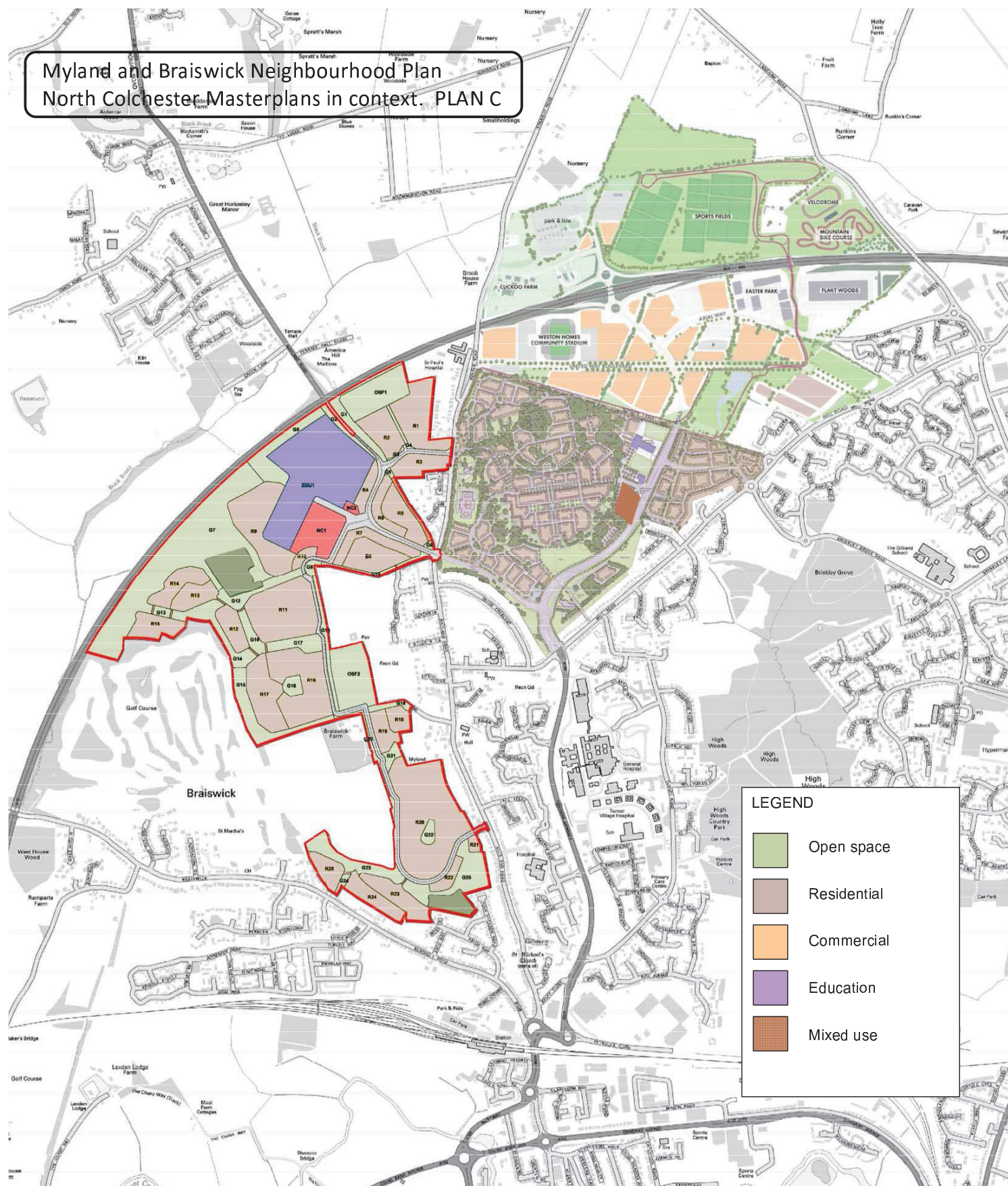
Myland & Braiswick Neighbourhood Plan Boundary and Key Features map

Myland & Braiswick Neighbourhood Plan District & Key Features - PLAN B



Remaining Major Development Areas in Myland

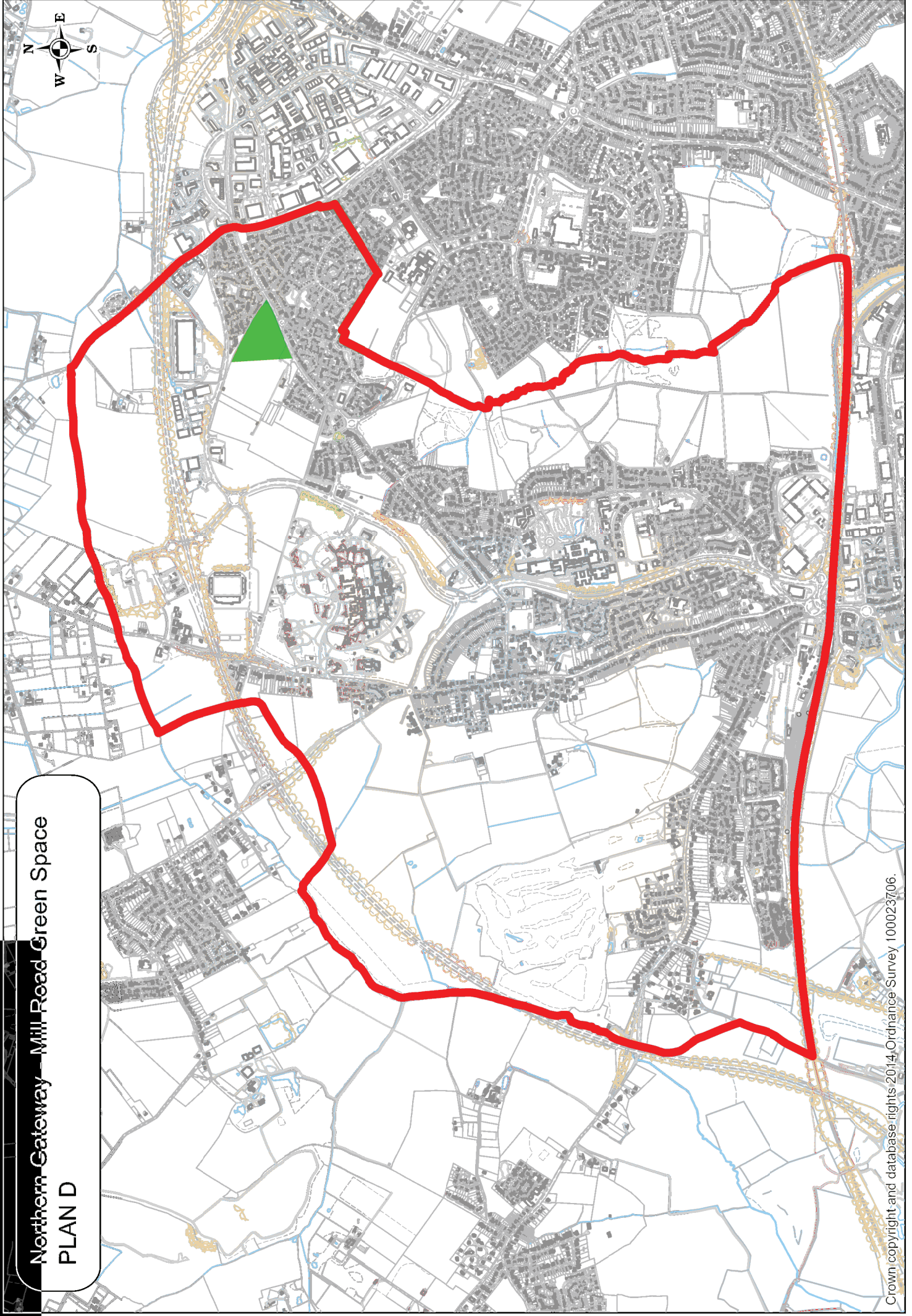
Myland and Braiswick Neighbourhood Plan North Colchester Masterplans in context. PLAN C



North Colchester: masterplans in context

Northern Gateway / Mill Road Green Space

Northern Gateway – Mill Road Green Space
PLAN D



Bibliography

Myland Community Council, November 2013, *Myland and Braiswick Neighbourhood Plan Residents Survey*.

Myland Community Council, 2010. *Myland Design Statement*. (adopted by CBC 2010)

Myland Community Council, 2012. *Myland Parish Plan*. (adopted by CBC 2012)

A History of the County of Essex: Volume 9

Myland community Council, March 2010, '*Community Response and Outline Project Brief to Draft Supplementary Planning Guidance of West Mile End*.

Colchester Borough Council, *Local Development Framework - Core Strategy, Adopted 2008, Selected policies revised July 2014*.

Colchester Borough Council, *Local Development Framework – Development Policies, Adopted October 2010, Selected policies revised July 2014*.

Colchester Borough Council, *Local Development Framework – Site Allocations, Adopted October 2010*.

Department for Communities and Local Government. 2012. *National Planning Policy Framework (NPPF)*

Myland Community Council, *The Mylander*, (a quarterly publication to all households).

Colchester Borough Council, 2014 *Local Plan Sustainability Appraisal Scoping Report*.

Building Research Establishment, 2012, *BREEAM Communities 2012*.

Town and Country Planning Association and Wildlife Trusts. 2012. *Planning for a health environment – good practice guide for green infrastructure and biodiversity*.

Cabe at the Design Council, Design for Homes and the Home Builders Federation, with the assistance of Nottingham Trent University, 2012. *Building for Life*.

Essex County Council, 2013, *North Colchester Transport Strategy* (unadopted)

Department for Communities and Local Government and The International Longevity Centre. (Discussion paper 2007). *Towards Lifetime Neighbourhoods: Designing sustainable communities for all*.

The Foundation for Lifetime Homes and Neighbourhoods, 2010, *Life-Time Home Standard*.

Central Housing Advisory Committee, 1961, *Homes for Today and Tomorrow (Parker Morris Model)*.

Colchester Borough Council, *Local Plan, Issues and Options, January 2015*

Colchester Borough Council, *Call for Sites, 2015*

APPENDIX F

Acknowledgements

The following participants enabled this Neighbourhood Plan to be produced:

The residents of Myland and Braiswick

The Neighbourhood Plan Working Group

- Ken Aldred, resident
- David Clouston, Councillor, MCC
- Jean Dickinson, Councillor, MCC
- Helen Harris, Clerk, MCC
- Pete Hewitt, Councillor, MCC
- Chris Law, representative, BRA
- Patrick Mills, resident
- Marcus Poole, resident
- Luisa White, resident

Colchester Borough Council

- Sarah Pullin, Planning Policy Officer
- Vincent Pearce, Major Development Manager
- Laura Chase, Planning Policy Manager
- Daniel Cameron, Planning and Contributions Officer

Cover Design

- Coral Weston