

Creating Safer **Rural** Communities together



Toolkit to support partnership action

Introduction	2
This Toolkit.....	4
Step 1 – Identify the issues and what the priorities are	5
Step 2 – Consider how to tackle the problems	6
Step 3 – Seek help and engage	8
Step 4 – Securing funding.....	9
Appendix 1 – Details of Voluntary Group, initiatives or organisations who can help:	10
Appendix 2 – Funding sources.....	16

Creating Safer **Rural** Communities together



Foreword

Foreword from Councillor Mark Cory, Leader of Colchester Borough Colchester

Crime and the fear of crime are of high concerns to most residents. Living in a place where you feel safe is an important part of having a good quality of life. The impact of crime and anti-social behaviour (ASB) on victims and communities can be greater in rural areas where there are fewer local amenities and support services and people can feel more isolated and vulnerable. Essex Police launched their Rural Crime Strategy in November 2017, which was developed in close partnership with rural communities and relevant partner agencies. At Colchester Borough Council, we are taking this a step further, building on our investment in Police numbers in Colchester, we have developed a new strategy for rural areas too. We are delivering on our promise to make safer streets and communities for the whole borough.



Foreword from Pamela Donnelly, Chair of Safer Colchester Partnership

The Safer Colchester Partnership (SCP) is committed to working with Essex Police and Partners to actively strengthen our response to fighting crime in rural areas through the effective use of policing resources, partnerships and working with our rural communities. Essex Police and Partners have made a strong start with the launch of Essex Police Rural Crime Strategy and this work is beginning to make a difference in how communities initially identify and respond to the issues affecting their areas. This Rural Communities Safety Toolkit has been developed to work alongside the Essex Police Rural Crime Strategy, providing local advice and guidance to communities seeking to innovatively problem solve, devise practical solutions and reduce crime and the fear of crime.



Introduction

Residents who live in rural areas often consider that they have a lack of Police presence. Crime reported in rural areas tends to be lower, however the impact on residents can be worse due to a number of factors, living remotely adding to a sense of isolation being a key one.

Crime types are becoming more diverse, and whilst crimes such as domestic abuse, cyber-crime and sexual offences take place in both rural and urban communities, there are crimes such as livestock theft and poaching that are specific to rural communities.

The NRCN (National Rural Crime Network) Rural Crime Survey of 2018, highlighted that some of the most common concerns are not solely policing matters, but include issues like fly-tipping and speeding.



Rural crime data

Rural crime is often thought of in terms of theft of plant, livestock, metal, oil or damage to property, however the Essex Police Rural Crime Strategy incorporates all types of crime and wider issues that have a significant impact on rural communities, such as: **Anti-Social Behaviour, Assaults and Domestic Abuse, Wildlife Crime, Fly-Tipping, Hare Coursing, Damage/Arson/Vandalism, Dwelling Burglary, Drug and Substance Misuse, Fear of Crime/Personal Safety/Harassment, Theft from Outbuildings, Forced Labour/Slavery, Racial Harassment and Intimidation.**

The Essex Police Rural Crime Strategy 2017 is available for download via the Essex Police website: www.essex.police.uk/advice/rural-crime

Colchester Rural Crime Offence data for 2018 confirms that the top offences included threat to property, theft, criminal damage, public order, burglary, criminal damage, harassment and assault.

This Toolkit

Crime Prevention is about the anticipation, recognition, and appraisal of a crime risk, and the initiation of action to remove or reduce it. It is an active approach utilising public awareness and preventive measures to reduce crime.

Crime Prevention reflects a philosophy of self-defence where the police and the community act before crimes are committed. This approach will reduce crime, stimulate public awareness concerning crime prevention and enhance our communities. It is cheaper, safer, and healthier for communities to prevent crime than to have to treat its victims and deal with its perpetrators.

We all have a role to play in making our communities safer, friendlier and more liveable. We hope this Toolkit can help you achieve those goals.

But the responsibility of crime prevention doesn't fall on one person, organisation or group – it's everyone's business.

This toolkit provides ideas, information and resources to help you make your neighbourhood a better place to live. It will help you identify what the problems are, how you can go about addressing them, preventative measures and some possible funding sources.

We all have a role to play in making our communities safer, friendlier and more liveable. We hope this Toolkit can help you achieve those goals.



Step 1 – Identify the issues and what the priorities are



If you decide to tackle issues in your local area a sensible first step is to consider what the key problems are. Is there a particular problem with vandalism or littering? Is a specific area experiencing high levels of burglary?

You can do this in a number of ways, below are some ideas:

- A community group discussion or meeting
- A survey of residents within the community
- A door knocking exercise to ask people
- Use an existing newsletter to invite feedback
- Reviewing information on local social media sites

Consider and capture what the issues are. As part of this process it is really important to list them, agree them and confirm:

- If they are actually happening or is there a perception or fear that they are happening?
- What are crimes and what is antisocial behaviour?
- How often the problems are happening?

If the list is very long it may be helpful to prioritise them, so consider what is having the most impact, are there some issues that can be grouped together?

This does not mean that you will only attempt to tackle the things that are at the top of the list but it may make it more manageable and realistic. Also you may find that by tackling some issues you automatically tackle others.

Fear of crime may need a different approach to actual crime that is happening. Understanding the root cause of the problem early on is more likely to mean you find the right solution that will work.



Step 2 – Consider how to tackle the problems

Ideas about how to tackle the problems and what resources you need are a key step and may lead to more than one solution.

Additional police resources are often felt to be the only solution but that is not always the case and may be unrealistic or ineffective. One PCSO is unlikely to be able to address all the complex community issues that lead to feeling unsafe or a lack of community cohesion, while they may be able to address a very specific issue effectively. This sort of resource is also the most expensive

You can do this in a number of ways, below are some ideas:

- A Police Community Support Officer will cost £38,500 per year with a minimum two year commitment whereas a Special Police Constable is approximately £1,000 per year.
- A dedicated Neighbourhood Warden costing £39,000 per year and Neighbourhood Operative costing £26,000 per year.

Please note costs listed above are correct as of March at 2019.

If a PCSO is felt to be the answer then perhaps a number of communities or neighbourhoods could share the expense and think about community or voluntary support that could enhance the effectiveness.

One of the more well-known benefits of volunteering is the impact on the community. Volunteering allows individuals to connect to their community and make it a better place. Even helping with the smallest tasks can make a real difference to the lives of people, animals, and organisations in need and volunteering is a two-way street: It can benefit the individual as well as their family as much as the cause. Examples you may like to consider:

You can do this in a number of ways, below are some ideas:

- Neighbourhood Watch schemes are very effective for fear of crime and crime prevention
- Keep Britain Tidy and local Litter Warriors or #Litterheros
- Community Speed Watch schemes
- Community Payback can help with clear up projects, graffiti removal and a host of other activities
- Considering the activities for youngsters in the neighborhood, The Youth Enquiry Service may be able to assist with ideas
- Essex Universities V Team can often help with neighborhood activities
- Getting key people within neighbourhoods to discuss the problems and think about solutions that they could help with
- Local events and activities to bring the neighbourhoods together, a cohesive community is very likely to find solutions



Step 3 – Seek help and engage!

Help can come in different ways, there is professional support that you may seek from the Council or Police but it is really important to involve the community as widely as possible.

Find ways to discuss the issues with them and involve them in agreeing the solutions, consider making an 'event' or occasion out of any activities, which can support better community cohesion and more willingness to repeat the initiative on future occasions.

A list of groups and organisations you could engage with to tackle some specific issues that may need to be addressed are detailed in Appendix 1.

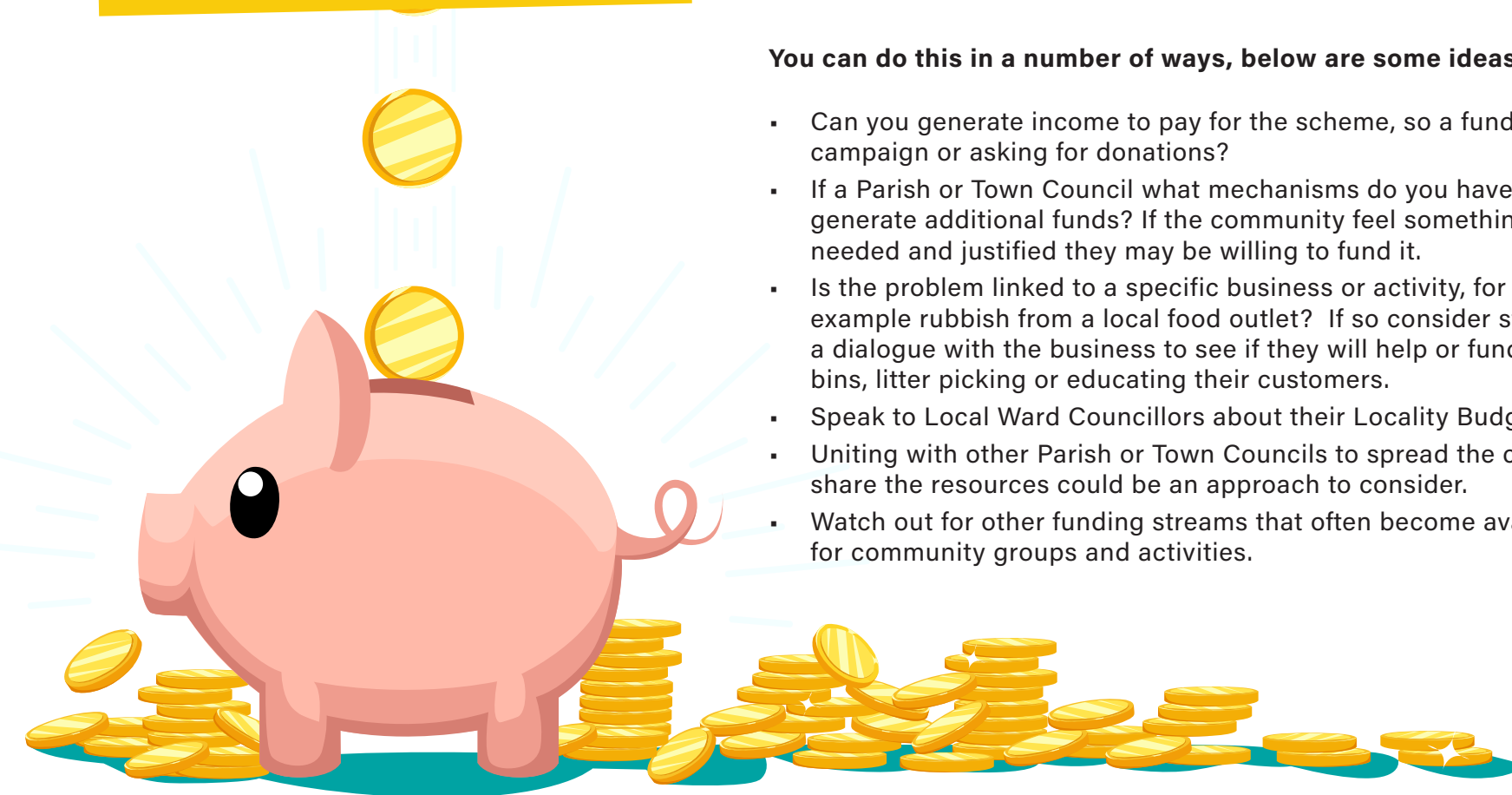


Step 4 – Securing funding

Some approaches may not need any funding, just dedicated individuals willing to give up their time to make their community a better place for everyone. However where funding is needed there are a number of options, Appendix 2 gives more details.

You can do this in a number of ways, below are some ideas:

- Can you generate income to pay for the scheme, so a fundraising campaign or asking for donations?
- If a Parish or Town Council what mechanisms do you have to generate additional funds? If the community feel something is needed and justified they may be willing to fund it.
- Is the problem linked to a specific business or activity, for example rubbish from a local food outlet? If so consider starting a dialogue with the business to see if they will help or fund extra bins, litter picking or educating their customers.
- Speak to Local Ward Councillors about their Locality Budget.
- Uniting with other Parish or Town Councils to spread the cost and share the resources could be an approach to consider.
- Watch out for other funding streams that often become available for community groups and activities.



Appendix 1 – Useful Contacts

Abandoned and nuisance vehicles

Organisations who can help	How they can help	How to contact
Colchester Borough Council (CBC)	<p>CBC have a duty to investigate and remove abandoned vehicles from private land (that is open to the air). If you think that a vehicle in your area may have been abandoned,</p> <ul style="list-style-type: none">▪ Search ‘abandoned vehicle’ & choose ‘Report an Abandoned Vehicle’ on CBC website <p>Colchester Borough Council Neighbourhood Teams regularly patrol throughout the borough and are useful when dealing with local community issues such as; nuisance and abandoned vehicles and more. Contact your local team for more information and advice.</p> <p>Help to decide if a vehicle is abandoned</p> <p>How to decide if a vehicle is abandoned. This is likely if at least one of the following applies:</p> <ul style="list-style-type: none">▪ it has no keeper on DVLA’s database and is untaxed - check vehicle tax online▪ it’s stationary for a significant amount of time▪ it’s significantly damaged, run down or unroadworthy - for example, has flat tyres, missing wheels or broken windows▪ it’s burned out▪ a number plate is missing	<p>www.colchester.gov.uk</p>
Essex Police	<p>Local authorities and the police have the power to remove a vehicle if it is illegally/dangerously parked, causing an unnecessary obstruction or has been abandoned. Contact your local Policing Team for more information.</p> <p>Call Essex Police for all emergencies on 999 and all non-emergency issues on 101.</p>	<p>www.essex.police.uk/contact-us</p>
North Essex Parking Partnership (NEPP)	<p>The Parking Partnership is a council-run organisation which brings together all street-based parking services in Essex including Colchester and is responsible for the area’s on-street Civil Enforcement Officers.</p>	<p>www.colchester.gov.uk</p>

Crime and anti-social behaviour (ASB)

Organisations who can help	How they can help	How to contact
CBC Neighbourhood Team	<p>Colchester Borough Council have six multi-skilled and dedicated Neighbourhood teams with in-depth knowledge of local areas. They are on hand to report and solve problems quickly and efficiently, give advice and listen to suggestions for your local area.</p> <ul style="list-style-type: none">▪ Search Community Neighbourhood Teams’ on CBC website.	<p>www.colchester.gov.uk</p>
Colchester Borough Homes ‘ASB Team’	<p>Colchester Borough Homes are committed to tackling anti-social behaviour; people have the right to a decent quality of life in their local community. The team works closely with partner agencies to secure resolutions to specific reports of ASB.</p> <ul style="list-style-type: none">▪ Visit the CBH website for more information and advice or to report an issue.▪ Alternatively, you can contact the team via the ASB hotline on: 01206 507341.	<p>www.cbhomes.org.uk/your-neighbourhood/antisocial-behaviour/</p>
Crimestoppers	<ul style="list-style-type: none">▪ Crimestoppers have an anonymous 24/7 phone number 0800 555 111 that people can use to pass on information about crime. Information about keeping safe can also be obtained.	<p>www.crimestoppers-uk.org</p>
Essex County Council ‘Trading Standards’	<p>Essex County Council Trading Standards is responsible for ensuring businesses and consumers understand their legal rights and responsibilities in relation to legislation that falls within its remit. Trading Standards can be contacted and are available to provide information and advice about issues, such as; business advice, buying with confidence, rogue doorstep traders and more.</p>	<p>www.essex.gov.uk/trading-standards-for-consumers</p>
Essex Fire and Rescue Service (ECFRS)	<p>Essex Fire and Rescue Service aim to work with children and young people across Essex to develop their confidence, belief, attitude and life skills in a disciplined and controlled environment. They run a number of successful schemes throughout the year during school time and in the evenings. You can enquire about these schemes, receive fire safety related advice, home fire safety checks, smoke alarms and most importantly, report fires.</p> <ul style="list-style-type: none">▪ In an emergency, always dial 999.	<p>www.essex-fire.gov.uk</p>
Essex Police	<p>Essex Police can be contacted to report or receive information and assistance in regard to any incidents of ASB related, crime or fear of crime issues.</p> <ul style="list-style-type: none">▪ Report a crime online to Essex Police – ‘choose report a Crime or ASB’▪ Call Essex Police for all emergencies on 999 and all non-emergency issues on 101.	<p>www.essex.police.uk/</p>

Dog behaviour and dog fouling issues

Organisations who can help	How they can help	How to contact
Colchester Borough Council (CBC)	<p>A Public Space Protection Order (PSPO) against the anti-social behaviour of dog fouling in public areas was introduced across the Borough on Monday 31 October 2016. Under the PSPO, owners are required to clear up after their dogs in public areas. Failure to do this will result in a fixed penalty charge of £100 or a fine in court of up to £1000.</p> <p>If you are aware of anyone not clearing up after their dog, please contact CBC. Any information provided will be dealt with confidentially.</p> <ul style="list-style-type: none">▪ Search ‘Report Dog Fouling’ on CBC website <p>Neighbourhood Teams regularly patrol throughout the borough and are useful when dealing with local community issues such as; dog fouling enforcement, educational campaigns and more. Contact your local team for more information and advice.</p> <ul style="list-style-type: none">▪ Search ‘Community Neighbourhood Teams’ on CBC website <p>Colchester Borough Council Environmental Protection Team can be contacted in cases of noise nuisance under the Environmental Protection Act 1990, including dog barking. Many factors are considered when determining whether a statutory nuisance exists, including time of day, frequency of events and their duration. They will normally require evidence in the form of diary sheets when considering formal action.</p> <ul style="list-style-type: none">▪ Search ‘Environmental and Animal Services’ on CBC website	www.colchester.gov.uk
Royal Society for the Prevention of Cruelty to animals (RSPCA)	<p>The RSPCA are an animal welfare charity set up for the prevention of cruelty to animals and were the first to introduce a law to protect animals. Their teams work hard to ensure that all animals can live a life free from pain and suffering.</p> <ul style="list-style-type: none">▪ The RSPCA can be contacted for all sorts of animal advice and welfare information.	www.rspca.org.uk

Recycling, street cleanliness, maintenance, foliage and litter/fly tipping

Organisations who can help	How they can help	How to contact
Colchester Borough Council (CBC)	<p>Environmental Team</p> <p>CBC’s Environmental Health Team can be contacted for information and advice regarding; food hygiene, industrial pollution, contaminated land, pests and more.</p> <ul style="list-style-type: none">▪ Search ‘Environmental Health Team’ on CBC website <p>Report a Street Problem</p> <p>The Borough Council is also responsible for the street cleaning of roads, litter and the collection of recycling bins owned by the council. Visit the Council webpage for more information or to report a problem such as; graffiti, fly posting/tipping and more</p> <ul style="list-style-type: none">▪ Search ‘Graffiti’, ‘Fly Posting’, ‘Fly Tipping’ on CBC website <p>Litter Warriors</p> <p>An array of residents from all over the Borough, have committed to pick litter in their local communities on a regular basis. Groups can be up to 20 people with a commitment to dedicate just 16 hours per month to picking litter in their local areas. The Council will issue these groups with the equipment and bags that they need and pick up the bags at the end of any session.</p> <ul style="list-style-type: none">▪ Search ‘Litter Warriors’ on CBC website <p>Neighbourhoods Teams</p> <p>CBC Neighbourhoods Teams regularly patrol throughout the borough and are useful when dealing with local community issues such as; Litter, street maintenance, overgrown trees and hedges, fly tipping, educational campaigns and more. Contact your local team for more information and advice.</p> <ul style="list-style-type: none">▪ Search ‘Neighbourhoods Teams’ on CBC website <p>Some litter and dog bins are installed and maintained by Town and Parish Councils. These bins should have additional contact information on them to assist you in reporting issues directly</p>	www.colchester.gov.uk
Community 360	<p>Situated at the heart of the local voluntary and community sector since 1968, Community 360 are an independent, charitable infrastructure organisation whose aim is to inspire groups to seize opportunities and become more enterprising and sustainable.</p> <ul style="list-style-type: none">▪ Contact Community 360 for more information about volunteering and local activities that are taking place.	www.community360.org.uk/

Recycling, street cleanliness, maintenance, foliage and litter/fly tipping

Organisations who can help	How they can help	How to contact
Community Payback	Community Payback can be contacted to assist with many community projects such as; conservation work, painting and decorating, carpentry, graffiti removal, building work, litter picking and churchyard maintenance (including war graves and gardening). A representative will need to carry out a site visit to the highlighted problem area in order to assess work requirements. The team may also be able to assist with any ongoing maintenance. <ul style="list-style-type: none">▪ Contact Community Payback for more information.	www.police.uk/essex/39/community-payback/
Neighbourhood Watch (NHW)	Neighbourhood Watch is a voluntary network of schemes where neighbours come together, along with the police and local partners, to build safe and friendly communities. <ul style="list-style-type: none">▪ If you wish to start a Neighbourhood Watch Scheme in your community, you can do this by sending an email to: colchesternhw@gmail.co.uk▪ Or contact via; https://twitter.com/ColchesterNhW	colchesternhw.org.uk/
Essex County Council (ECC) Highways	Essex County Highways can be contacted to report a wide variety of highways issues such as; damage to grass verge's, potholes, signage, vegetation problems and more on property owned by the County.	www.essexhighways.org/transport-and-roads.aspx
Trolley wise	The sight of an abandoned shopping trolley is never welcome. Trolley Wise can be contacted to report trollies that have been abandoned and can arrange for their collection.	www.wanzl.com/en_EN/service/trolleywise/

Travellers & unauthorised encampments

Organisations who can help	How they can help	How to contact
Essex Countywide Travellers Unit (ECTU)	The ECTU manages all unauthorised encampments on Council Land within the borough. The partnership agreement the Borough Council has with ECTU includes Parish Council Land. <ul style="list-style-type: none">▪ For members of the public, please contact the ECC Contact Centre: 03457 430 430 Open 8:30am-6pm Monday to Friday.▪ For partner Officers/Members: 03330 131427 or 03330 137870, open 9am to 5pm Monday to Friday.	www.essex.gov.uk/gypsies-travellers/report-unauthorised-encampment ck/
Essex Police - Local Policing Teams	The local police will visit and assess the site. In certain circumstances the police have the power under Section 61 of the Criminal Justice and Public Order Act 1994 to direct the unauthorized campers to leave the site i.e. if there are 6 or more caravans; damage to the property; threatening abusive behavior; serious breaches of the peace; disorder; criminal activity or anti-social behaviour. <ul style="list-style-type: none">▪ Always be sure to dial 999 should an act of crime be in progress.	www.essex.police.uk/your-area/colchester/

Appendix 2 – funding sources

There are several funding sources available – some of those known to the Safer Colchester Partnership are listed below.

Colchester Borough Council - Safer Rural Communities Fund

The Safer Rural Communities Fund supports the Safer Rural Communities Toolkit and is available to assist communities in the delivery of projects and initiatives that address/tackle anti-social behaviour and crime within your Rural Community (and therefore increasing quality of life/feeling of safety). Grants of up to £1,000 are available.

www.safercolchester.co.uk
(search 'Safer Rural Communities Fund')

Colchester Borough Council - Locality Budgets (Councillors)

All Colchester Borough Councillors are allotted a Locality Budget of £2000 each. Ward Councillors can use their budget to initiate or support community projects or services. The budgets can be used for projects within a Councillor's

Ward, or otherwise for project which their constituents will benefit from. Councillors welcome contact from community groups; if you have a project that would benefit from funding support, (for contact details of your local Ward Councillors: www.colchester.gov.uk – search Borough Councillors)

www.colchester.gov.uk
(search 'Locality Budgets')

Colchester Borough Council - Voluntary Welfare Grant

This funding is available to projects that serve Colchester's residents providing comprehensive or specialist services to the local community and which complement the Council's own strategic aims. Registered charities constituted voluntary and community organisations, and not-for-profit organisations are eligible to apply for this funding, requesting any amount between £5000 and £50,000.

www.colchester.gov.uk
(search 'Voluntary Welfare Grant')

Community360 – Fundraising

Community360 is an independent charity formed in 1968. Located in Colchester, Community 360 are committed to a vision to build "thriving local communities". Community360's Community Development team can assist your organisation throughout the fundraising process.

www.community360.org.uk
/community-development/fund-raising/

Appendix 2 – funding sources (continued)

Essex Community Foundation (ECF)

Essex Community Foundation are an independent charitable trust, improving the quality of life of people in the community by investing and distributing funds on behalf of a wide range of donors. By working together, communities in the county have benefited from £34 million of charitable grants awarded from ECF. ECF extensive local knowledge and expertise helps donors channel their giving locally and help those most in need." ECF award from £250 to £10,000.

www.essexcommunityfoundation.org.uk/index.php

National Lottery Community Fund

National Lottery Awards for All - A quick and simple way to get small National Lottery grants of between £300 and £10,000 to support what matters to people and communities.

Reaching Communities England - Flexible funding over £10,000 for up to five years to organisations in England who want to take action on the issues that matter to people and communities. The grants are awarded to voluntary and community organisations or social enterprises for up to five years.

www.tnlcommunityfund.org.uk (search 'National Lottery Awards for All' and/or 'Reaching Communities England')

Parish Council's

Parish councils have a wide range of powers including looking after community buildings, planning, street lighting, allotments. They also have the power to raise money through council tax. The funding for parish councils is allocated by the district council and is taken from the area's council tax; this is called an annual precept. They can also apply for UK grants and funding and EU money.

www.colchester.gov.uk
(search 'Parish Councils')

Police, Fire and Crime Commissioner (PFCC) - Community Safety Development (CSDF) fund

The PFCC's vision for Essex is to ensure that safe and secure communities are the bedrock on which we build success and well-being for all. To support this, the PFCC has created the Community Safety Development (CSDF) fund. This £300,000 fund offers grants of up to £20,000 for community projects that help to prevent and tackle crime and anti-social behaviour in Essex.

www.essex.pfcc.police.uk (search Community Safety Development Fund)

Safer Colchester Partnership (SCP)

The aim of the Safer Colchester Partnership is to reduce crime and disorder in the Borough. In order to do this, funding is available for partners and community groups to bid into, to deliver specific projects and initiative in line with the SCP's annual key priorities.

www.safercolchester.gov.uk
(search 'SCP Funding')

A stylized green landscape with a sun and rays. The sun is a large, light green circle on the right side, with several thin, light green lines radiating from it across the sky. The landscape consists of rolling hills and fields, represented by various shades of green and white outlines. There are some dark green shapes that look like trees or bushes in the distance.

Creating Safer **Rural** Communities together